

## CHAPTER 4

### ANALYSIS AND DESIGN

#### 4.1 Analysis

In this phase of the project is to use google maps to see the beginning, as well as using google places API to display a marker on the display scanning, infowindow for operating hours when the user clicks the marker, as well as the category filter opening hours in the initial view. Google geolocation API to the user's current location and Google Directions API to help users find and show directions to the specified location. At the beginning of the program will display google maps and filters hours of operation that has been set. when the user selects the filter number 1, the marker will appear appropriate filter opening hours that have been specified in the program.

After that will appear a list of places to the right and when the user clicks the right bar marker or list it would appear that directs the user from the current position to the place that has been set.

## 4.2 Design

### 4.2.1 FLOW CHART

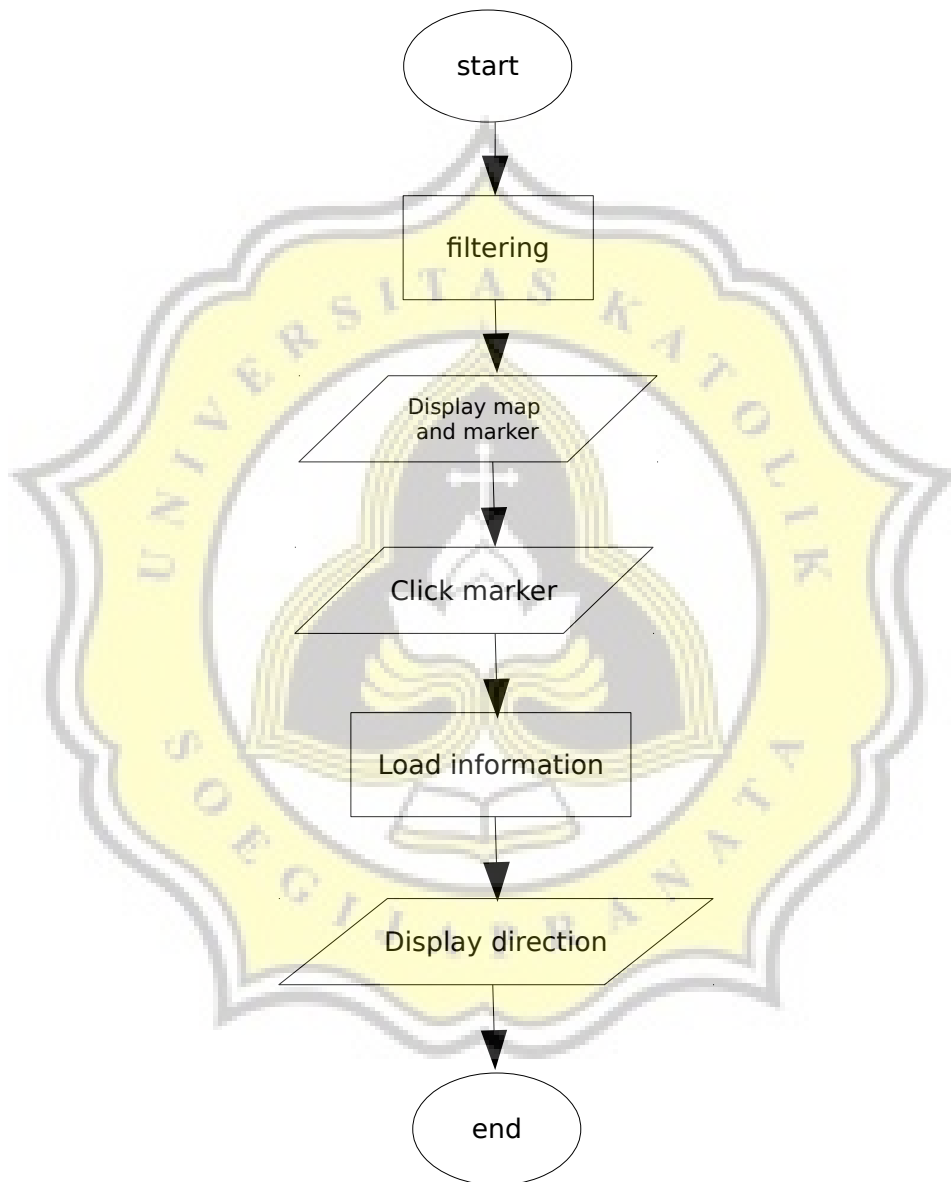


Figure 4.1: Flow Chart Of Program