







TINGKAL LAKU PROSOSIAL

No.	X01	X02	X03	X04	X05	X06	X07	X08	X09	X10	X11	X12	X13	X14	X15	X16	X17
1	4	4	2	4	3	2	4	2	4	4	4	3	3	2	4	3	3
2	4	3	4	4	3	2	4	2	3	4	4	4	3	4	4	2	2
3	4	4	2	4	4	4	3	3	2	1	4	2	4	4	1	4	3
4	4	3	3	4	3	4	4	3	4	4	4	4	4	4	4	4	4
5	4	2	1	4	2	3	4	3	2	2	4	4	3	4	3	2	4
6	4	4	2	4	4	4	3	3	4	4	4	3	3	2	4	3	4
7	4	2	1	3	4	2	4	3	4	1	3	3	2	4	4	1	3
8	4	3	2	1	4	3	4	1	3	4	4	4	2	2	4	4	4
9	4	4	1	2	3	2	4	2	4	4	4	4	3	2	4	4	4
10	4	3	1	4	4	3	4	4	3	4	3	4	2	4	1	4	3
11	4	2	4	4	4	4	4	2	2	4	3	4	4	2	4	4	4
12	4	4	2	4	3	4	4	4	3	2	4	3	1	4	1	3	3
13	4	3	3	2	4	2	4	2	3	2	4	3	2	4	2	3	4
14	4	3	3	4	4	4	3	2	3	1	3	3	2	4	2	4	3
15	4	4	3	3	4	4	4	3	4	4	4	3	4	3	3	4	2
16	4	4	1	4	4	4	4	1	1	4	4	4	4	4	4	4	4
17	4	3	4	2	4	4	3	3	3	3	4	1	4	2	4	4	4
18	4	4	1	3	3	3	4	1	4	2	3	1	4	2	1	2	4
19	4	2	4	2	2	1	3	3	3	1	4	1	4	1	4	1	4
20	3	4	3	4	4	3	4	3	3	4	4	4	4	4	1	2	3
21	4	1	3	2	3	1	4	1	3	2	1	4	3	2	3	2	3
22	4	2	3	3	4	3	4	2	4	2	4	3	3	2	2	3	4
23	3	2	2	1	2	4	1	3	1	4	4	4	4	2	2	4	4
24	4	4	3	4	3	4	4	4	4	2	4	4	4	4	4	4	4
25	4	2	4	2	3	2	4	2	2	4	4	2	3	2	4	2	4
26	4	4	2	2	3	4	4	3	4	2	4	4	3	3	1	4	4
27	4	4	3	4	4	4	4	4	4	4	4	3	4	3	4	4	4
28	4	2	2	3	3	2	4	2	2	2	4	3	3	4	4	3	4
29	4	2	2	2	3	2	4	2	3	4	3	3	2	1	2	1	4
30	4	3	2	3	4	3	3	3	4	4	4	2	4	1	4	3	4
31	4	4	3	4	4	4	4	4	3	4	4	4	4	4	4	4	4
32	3	3	3	4	3	3	4	2	4	4	4	3	3	3	4	4	4
33	3	2	2	2	2	2	2	3	3	2	2	2	2	2	1	3	2
34	4	3	2	2	3	3	4	3	2	3	3	3	3	3	2	3	3
35	4	4	2	2	4	4	4	3	4	3	4	4	3	4	4	3	4
36	4	4	3	4	4	4	4	4	3	4	4	4	4	4	4	4	4
37	4	3	3	4	4	3	4	4	3	4	4	3	3	3	4	2	4
38	3	3	3	4	4	3	3	2	3	4	3	3	3	3	1	2	4
39	4	4	1	4	4	4	4	4	4	4	4	4	4	4	4	4	4
40	4	3	2	3	3	3	4	3	3	2	4	3	3	3	1	2	4

TINGKAL LAKU PROSOSIAL

No.	X01	X02	X03	X04	X05	X06	X07	X08	X09	X10	X11	X12	X13	X14	X15	X16	X17
41	4	3	3	4	4	4	4	4	4	4	4	3	3	3	3	4	4
42	3	4	2	4	2	3	4	4	3	4	3	3	4	3	2	2	3
43	4	3	4	4	4	2	4	2	2	3	4	3	3	2	4	2	2
44	3	3	2	4	3	4	4	2	2	3	4	3	3	4	1	2	4
45	4	4	1	3	2	4	4	3	2	2	4	4	4	4	4	3	3
46	3	2	3	2	3	3	4	2	4	3	3	3	2	3	1	4	4
47	4	4	1	2	4	2	4	3	4	4	4	4	4	2	4	3	4



TINGKAL LAKU PROSOSIAL

No.	X18	X19	X20	X21	X22	X23	X24	X25	X26	X27	X28	X29	X30	TLP
1	4	3	3	4	3	4	2	2	4	3	4	3	4	98
2	4	4	2	4	4	4	4	1	4	4	4	4	4	103
3	3	3	4	4	2	4	1	3	4	4	4	2	4	95
4	4	3	2	4	4	4	3	2	4	4	3	3	4	108
5	4	3	2	4	4	4	4	1	4	4	4	2	2	93
6	4	4	4	4	4	4	2	1	4	3	4	3	4	104
7	3	4	3	4	2	4	1	3	4	4	4	4	4	92
8	2	3	2	4	4	4	2	2	4	4	2	2	4	92
9	2	3	4	4	4	4	4	4	4	4	4	3	4	103
10	2	4	4	2	4	4	4	2	4	3	4	4	4	100
11	4	4	2	4	2	4	4	4	4	4	2	4	3	104
12	3	3	2	3	2	4	3	3	3	4	3	2	3	91
13	2	4	1	4	3	4	3	3	3	4	2	2	2	88
14	3	4	3	3	3	3	4	3	4	3	4	4	1	94
15	4	4	3	4	3	4	4	4	4	4	1	3	2	104
16	4	4	4	4	4	4	4	1	4	4	4	4	4	108
17	4	3	2	4	1	4	2	4	4	3	3	1	4	95
18	4	3	2	4	2	4	2	1	4	4	4	3	4	87
19	3	3	3	3	1	3	3	3	1	3	3	3	1	77
20	4	3	3	4	4	4	4	4	4	4	4	4	2	105
21	1	4	2	3	2	4	1	4	1	4	1	4	1	74
22	4	4	2	4	3	4	3	3	4	4	4	3	2	96
23	4	4	3	4	4	4	4	3	4	4	4	2	4	95
24	4	4	1	4	4	4	4	1	4	4	2	4	2	106
25	2	3	3	4	2	4	2	3	4	4	3	3	4	91
26	4	3	3	4	4	4	4	2	4	4	4	2	4	101
27	4	4	4	4	4	4	4	2	4	4	4	4	4	115
28	4	3	2	4	3	4	3	1	4	4	3	4	1	91
29	2	2	2	2	2	3	3	1	3	3	3	3	4	77
30	4	3	4	4	3	4	3	2	4	3	4	4	4	101
31	2	4	3	4	3	4	4	4	4	4	4	4	4	114
32	4	3	3	4	3	4	3	3	4	4	3	3	3	102
33	2	2	3	2	4	4	2	2	4	1	2	3	2	70
34	3	3	3	3	3	3	3	3	3	3	3	3	3	88
35	3	3	3	4	4	4	3	4	4	4	4	4	4	108
36	4	4	4	4	4	4	4	4	4	4	4	3	4	117
37	2	3	4	4	3	3	3	3	4	4	3	3	3	101
38	2	3	4	3	2	3	3	3	3	3	3	3	3	89
39	4	4	4	4	4	4	4	4	4	4	4	4	4	117
40	2	3	3	3	3	3	3	3	4	4	3	3	3	90

TINGKAL LAKU PROSOSIAL

No.	X18	X19	X20	X21	X22	X23	X24	X25	X26	X27	X28	X29	X30	TLP
41	4	3	2	4	3	4	4	3	4	4	3	3	3	106
42	2	2	2	4	4	3	3	4	4	4	3	4	3	95
43	4	3	4	3	2	4	4	3	4	4	3	4	3	97
44	2	3	4	4	2	3	3	3	4	3	3	3	3	91
45	4	4	2	4	4	4	3	4	4	4	4	4	4	104
46	2	2	2	4	2	2	4	2	4	3	2	2	2	82
47	1	4	3	3	4	3	3	4	4	4	4	4	4	102



RELIABILITY ANALYSIS - SCALE (ALPHA)

Item-total Statistics Tingkah Laku Prosocial (1)

	Scale Mean if Item Deleted	Scale Variance if Item Deleted	Corrected Item- Total Correlation	Alpha if Item Deleted
X01	93.2128	112.6929	.2194*	.8386
X02	93.9149	103.3404	.6101	.8266
X03	94.6383	116.1489	-.1195*	.8512
X04	93.8936	104.9667	.4336	.8321
X05	93.6596	108.0120	.4136	.8335
X06	93.9362	103.3654	.5596	.8278
X07	93.2979	111.3006	.2295*	.8383
X08	94.3191	106.9177	.3687	.8345
X09	93.9362	111.5828	.1244*	.8423
X10	93.9362	104.4958	.4108	.8331
X11	93.3617	106.9315	.5594	.8305
X12	93.8511	106.3904	.4271	.8326
X13	93.8511	106.6078	.4469	.8322
X14	94.0638	106.7132	.3385	.8357
X15	94.1277	103.0703	.3799	.8353
X16	94.0000	104.4348	.4616	.8311
X17	93.4468	112.4265	.1281*	.8407
X18	93.9149	105.1665	.4158	.8328
X19	93.7234	108.1610	.4623	.8328
X20	94.1915	109.6799	.2238*	.8393
X21	93.3617	108.0185	.5053	.8321
X22	93.9574	104.8677	.4668	.8310
X23	93.2979	110.6485	.3627	.8359
X24	93.9149	105.7317	.4359	.8322
X25	94.2979	111.3006	.0990*	.8451
X26	93.2766	107.1610	.5075	.8314
X27	93.3617	108.4533	.4691	.8329
X28	93.7660	106.9658	.3923	.8337
X29	93.8511	109.6078	.2612*	.8378
X30	93.8723	105.4181	.3954	.8336

Reliability Coefficients

N of Cases = 47.0

N of Items = 30

Alpha = .9396

RELIABILITY ANALYSIS - SCALE (ALPHA)

Item-total Statistics Tingkah Laku Prosocial (2)

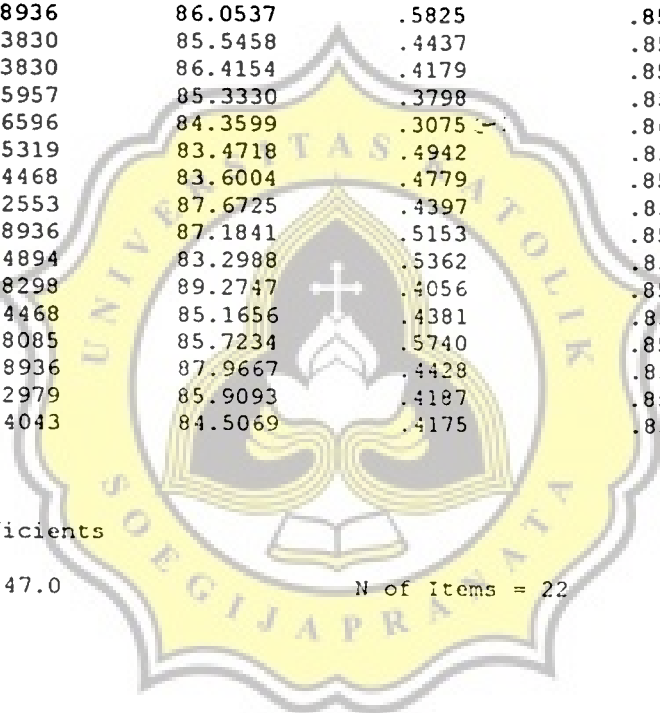
	Scale Mean if Item Deleted	Scale Variance if Item Deleted	Corrected Item-Total Correlation	Alpha if Item Deleted
X02	68.4468	83.0786	.6098	.8508
X04	68.4255	84.8150	.4154	.8578
X05	68.1915	88.5495	.3147	.8605
X06	68.4681	82.2544	.6125	.8503
X08	68.8511	86.6078	.3473	.8600
X10	68.4681	84.6892	.3775	.8598
X11	67.8936	86.0537	.5825	.8537
X12	68.3830	85.5458	.4437	.8566
X13	68.3830	86.4154	.4179	.8575
X14	68.5957	85.3330	.3798	.8592
X15	68.6596	84.3599	.3075	.8653
X16	68.5319	83.4718	.4942	.8547
X18	68.4468	83.6004	.4779	.8554
X19	68.2553	87.6725	.4397	.8574
X21	67.8936	87.1841	.5153	.8558
X22	68.4894	83.2988	.5362	.8531
X23	67.8298	89.2747	.4056	.8590
X24	68.4468	85.1656	.4381	.8568
X26	67.8085	85.7234	.5740	.8536
X27	67.8936	87.9667	.4428	.8575
X28	68.2979	85.9093	.4187	.8574
X30	68.4043	84.5069	.4175	.8578

Reliability Coefficients

N of Cases = 47.0

N of Items = 22

Alpha = .8625



A-2

Skala Gaya Pengasuhan *Authoritarian*



GAYA PENGASUHAN AUTHORITARIAN

No.	X01	X02	X03	X04	X05	X06	X07	X08	X09	X10	X11	X12	X13	X14	X15	X16	X17
1	3	4	2	2	3	2	1	4	2	3	1	3	3	3	2	2	2
2	2	1	1	1	3	1	2	3	3	3	2	2	4	4	2	2	3
3	3	3	1	1	4	1	1	1	1	3	1	3	3	3	1	1	1
4	3	4	2	1	3	2	1	2	3	4	2	1	4	3	1	2	3
5	2	4	1	1	3	1	1	3	1	3	1	3	3	2	2	3	2
6	1	2	1	1	2	1	1	1	1	3	1	4	3	2	1	3	1
7	2	3	2	2	2	2	2	3	3	3	2	2	3	3	2	2	3
8	2	2	2	2	3	2	1	3	2	3	1	2	3	3	1	2	2
9	3	3	2	2	2	2	2	3	1	3	2	2	2	3	1	2	2
10	3	4	1	3	3	1	1	3	1	3	1	2	3	3	1	2	3
11	2	3	2	2	2	2	1	2	3	3	4	2	3	3	1	2	3
12	2	3	2	2	2	2	1	4	2	3	2	1	2	3	2	2	2
13	1	1	2	2	3	3	1	4	3	2	1	1	2	2	1	2	1
14	1	2	1	1	3	2	1	2	1	4	1	2	3	3	1	1	3
15	2	3	2	1	2	4	2	4	3	3	2	1	4	4	1	2	2
16	2	3	2	2	3	2	2	2	2	3	2	3	3	3	2	2	2
17	3	4	1	1	1	2	1	1	1	2	2	4	2	4	1	3	1
18	3	2	3	3	1	3	2	4	2	3	3	1	1	3	2	2	2
19	4	2	3	2	1	4	3	4	3	3	3	3	2	4	1	4	4
20	3	3	1	1	3	2	1	2	2	4	3	1	4	4	1	1	1
21	3	2	4	1	2	3	2	4	4	1	4	2	2	3	2	3	4
22	2	2	2	2	3	2	3	1	2	3	3	3	3	2	2	2	2
23	2	4	2	2	3	1	2	1	1	4	2	2	3	2	2	2	1
24	3	4	2	3	4	2	1	4	1	4	1	2	3	4	2	2	1
25	2	4	2	2	3	3	1	2	2	4	2	3	3	3	2	2	4
26	2	3	4	3	3	2	3	3	2	3	3	3	3	4	3	3	2
27	1	1	1	2	1	1	1	1	2	3	1	1	3	2	2	2	1
28	2	1	2	2	2	3	1	2	1	3	2	1	3	3	1	2	3
29	4	4	2	1	2	3	1	3	3	4	1	2	4	3	2	2	2
30	2	3	3	2	2	3	2	2	1	3	2	1	3	3	2	2	2
31	4	4	3	2	2	4	3	3	4	4	3	2	3	4	3	2	2
32	3	3	2	3	2	3	3	1	2	3	3	3	4	3	3	3	2
33	2	4	1	4	3	1	1	4	4	4	4	3	4	4	1	4	4
34	2	3	3	2	3	2	3	2	2	2	3	2	2	3	3	2	3
35	2	2	2	1	2	3	1	2	1	4	1	1	1	4	2	1	1
36	2	2	1	1	3	1	1	2	1	4	1	1	2	3	1	1	2
37	3	2	1	2	4	1	1	1	3	2	1	2	1	3	1	1	3
38	3	2	1	2	3	2	2	3	4	3	3	2	2	3	1	2	3
39	3	2	1	2	2	2	1	1	1	3	1	2	1	4	2	2	2
40	2	2	2	3	2	1	1	2	3	3	2	1	1	2	3	1	1

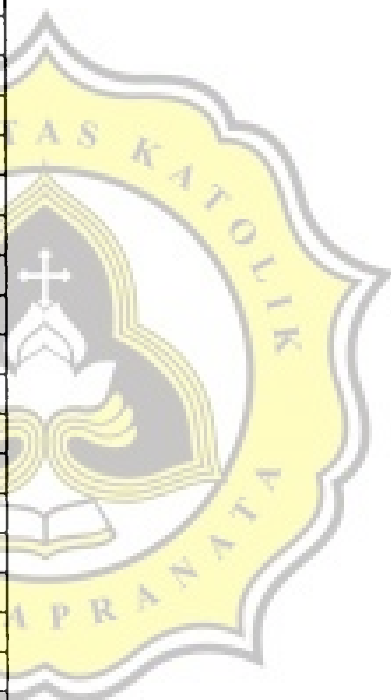
GAYA PENGASUHAN AUTHORITARIAN

No	X01	X02	X03	X04	X05	X06	X07	X08	X09	X10	X11	X12	X13	X14	X15	X16	X17
41	1	3	1	1	1	1	1	3	1	4	1	1	3	3	2	1	2
42	2	2	3	1	2	3	2	1	1	3	2	1	2	2	3	2	2
43	2	3	2	1	2	2	1	2	2	4	1	2	3	4	3	1	2
44	1	1	1	1	2	1	1	1	1	2	1	1	1	1	2	1	2
45	2	1	1	2	2	1	1	2	1	4	2	1	1	2	2	1	2
46	1	1	2	1	4	1	2	4	2	4	1	2	1	4	2	1	2
47	2	2	1	2	2	1	1	2	2	3	2	2	1	3	1	1	2



GAYA PENGASUHAN AUTHORITARIAN

No.	X18	X19	X20	X21	X22	X23	X24	GPA
1	3	2	4	3	2	3	3	62
2	2	2	4	3	2	4	3	59
3	3	1	4	2	2	4	1	49
4	3	2	4	4	4	4	2	64
5	2	2	3	3	2	4	1	53
6	1	2	3	4	3	4	2	48
7	3	2	3	3	3	3	3	61
8	2	2	3	3	3	3	2	54
9	3	2	3	4	2	3	2	56
10	2	2	4	4	3	3	2	58
11	2	3	3	3	3	3	2	59
12	2	2	3	3	3	3	2	55
13	2	2	2	3	2	4	4	51
14	4	2	4	3	4	3	3	55
15	3	2	4	3	4	4	4	66
16	3	2	3	3	3	3	2	59
17	2	1	3	3	3	3	1	50
18	3	2	3	3	4	2	2	59
19	2	3	1	1	3	3	2	65
20	4	3	3	4	2	4	1	58
21	2	3	1	2	3	2	3	62
22	2	2	3	3	2	3	1	55
23	2	2	4	2	2	4	2	54
24	3	2	3	3	4	4	2	64
25	2	1	3	3	4	3	3	63
26	3	3	2	2	3	2	3	67
27	1	1	3	3	3	3	1	41
28	2	2	3	4	2	3	2	52
29	2	3	4	4	4	4	3	67
30	2	2	3	3	3	3	3	57
31	3	2	2	2	4	2	3	70
32	3	3	4	2	3	2	3	66
33	4	4	4	2	4	4	3	77
34	2	2	3	3	4	2	3	61
35	1	1	3	2	4	3	1	46
36	2	1	4	3	3	4	1	47
37	2	2	4	2	2	4	2	50
38	3	2	4	4	3	4	2	63
39	4	2	4	3	2	4	1	52
40	3	1	3	3	3	3	2	50



GAYA PENGASUHAN AUTHORITARIAN

No.	X18	X19	X20	X21	X22	X23	X24	GPA
41	1	1	4	3	3	3	2	47
42	2	1	2	3	2	3	1	48
43	3	1	3	3	1	3	2	53
44	1	1	3	3	2	3	2	36
45	2	1	4	3	2	3	1	44
46	3	1	4	4	4	4	3	58
47	2	2	3	3	2	3	2	47



RELIABILITY ANALYSIS - SCALE (ALPHA)

Item-total Statistics Gaya Pengasuhan Authoritarian (1)

	Scale Mean if Item Deleted	Scale Variance if Item Deleted	Corrected Item- Total Correlation	Alpha if Item Deleted
X01	53.8511	60.1295	.4276	.7699
X02	53.5106	57.9944	.4575	.7667
X03	54.2979	60.9528	.3493	.7741
X04	54.3404	61.7077	.3225	.7757
X05	53.6809	64.0481	.1073*	.7869
X06	54.1277	60.1573	.3608	.7733
X07	54.6170	61.2414	.3835	.7728
X08	53.7021	57.6050	.4461	.7673
X09	54.1277	57.4616	.5161	.7629
X10	52.9574	64.5634	.0900*	.7865
X11	54.2128	58.5190	.4709	.7663
X12	54.1702	62.3182	.2224*	.7812
X13	53.5745	58.5976	.4377	.7682
X14	53.0851	59.8187	.4899	.7672
X15	54.3830	65.7197	-.0129*	.7911
X16	54.1915	59.7669	.4846	.7673
X17	53.9574	60.0416	.3923	.7715
X18	53.7234	59.4653	.4847	.7668
X19	54.2128	58.3016	.6624	.7590
X20	52.9149	67.2535	-.1401*	.7986
X21	53.1702	68.0574	-.2163*	.7995
X22	53.2553	60.0204	.4207	.7701
X23	52.8936	67.4884	-.1701*	.7969
X24	53.9787	58.8039	.5141	.7647

Reliability Coefficients

N of Cases = 47.0

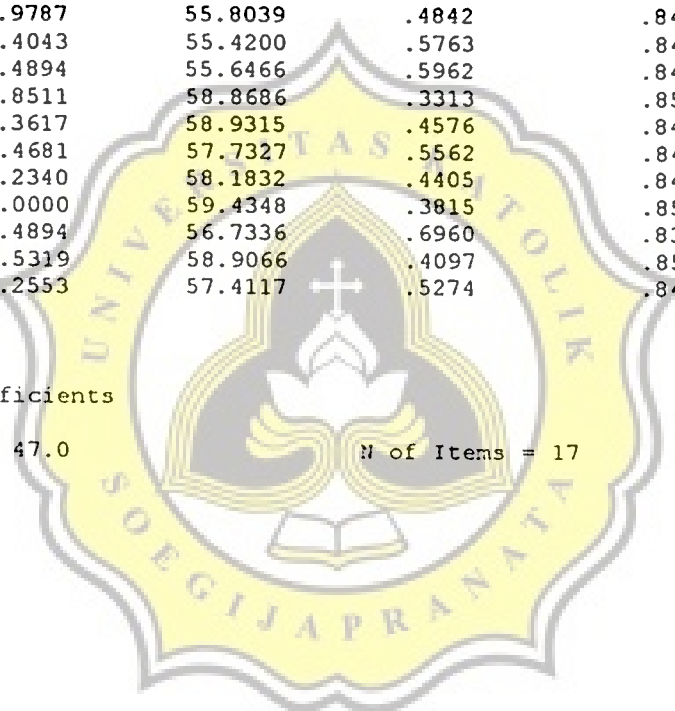
N of Items = 24

Alpha = .7831

RELIABILITY ANALYSIS - SCALE (ALPHA)

Item-total Statistics Gaya Pengasuhan Authoritarian (2)

	Scale Mean if Item Deleted	Scale Variance if Item Deleted	Corrected Item- Total Correlation	Alpha if Item Deleted
X01	35.1277	58.6355	.4486	.8493
X02	34.7872	58.2146	.3581	.8548
X03	35.5745	57.8585	.5029	.8469
X04	35.6170	60.1980	.3444	.8536
X06	35.4043	56.9417	.5103	.8463
X07	35.8936	59.1841	.4584	.8491
X08	34.9787	55.8039	.4842	.8483
X09	35.4043	55.4200	.5763	.8428
X11	35.4894	55.6466	.5962	.8419
X13	34.8511	58.8686	.3313	.8558
X14	34.3617	58.9315	.4576	.8490
X16	35.4681	57.7327	.5562	.8449
X17	35.2340	58.1832	.4405	.8497
X18	35.0000	59.4348	.3815	.8522
X19	35.4894	56.7336	.6960	.8397
X22	34.5319	58.9066	.4097	.8510
X24	35.2553	57.4117	.5274	.8457



Reliability Coefficients

N of Cases = 47.0 M of Items = 17

Alpha = .8560

A-3

Skala Gaya Pengasuhan *Authoritative*



GAYA PENGASUHAN AUTHORITATIVE

No.	X01	X02	X03	X04	X05	X06	X07	X08	X09	X10	X11	X12	X13	X14	X15	X16	X17
1	4	2	3	4	4	3	4	3	4	4	3	3	2	2	2	2	3
2	4	2	3	3	4	4	3	4	4	4	3	3	1	3	2	3	4
3	4	3	4	4	4	3	2	3	3	4	2	4	4	1	4	1	3
4	4	3	4	4	4	3	3	3	4	4	4	3	2	2	2	3	4
5	4	1	3	4	4	1	3	3	4	4	3	3	2	2	3	2	4
6	4	1	4	4	3	4	3	3	4	3	3	3	3	1	1	3	4
7	3	3	3	3	3	3	3	3	3	3	3	3	2	2	2	3	3
8	4	2	3	4	4	3	4	3	3	2	3	3	2	2	3	3	3
9	4	2	3	3	4	3	3	3	4	3	3	3	3	2	3	2	3
10	4	2	4	4	4	4	4	3	3	3	3	4	2	2	2	3	3
11	3	2	3	3	3	2	3	3	4	3	3	3	1	3	2	4	4
12	3	3	3	3	3	3	3	3	3	3	3	3	3	2	3	2	3
13	4	1	4	4	4	4	2	4	4	1	4	1	1	1	1	3	4
14	4	1	4	3	4	3	4	3	3	4	3	3	2	2	2	3	4
15	4	3	4	3	4	3	3	4	4	4	2	3	1	3	1	4	4
16	3	2	3	3	3	3	3	3	3	3	3	3	2	2	2	3	3
17	3	2	3	2	3	3	4	3	4	4	3	4	3	1	2	1	3
18	4	1	4	2	2	3	1	4	4	3	4	2	1	2	1	4	4
19	4	1	4	1	3	4	4	2	4	2	3	1	2	2	2	2	3
20	4	2	4	4	4	2	4	3	4	2	4	3	2	3	3	1	4
21	3	2	3	3	3	2	2	3	3	2	2	3	2	3	3	3	3
22	4	2	3	4	4	3	3	3	3	2	3	4	2	2	3	3	3
23	2	1	3	3	4	3	4	3	3	4	3	4	2	1	2	3	3
24	4	1	4	3	4	4	4	4	4	4	4	4	3	1	4	4	4
25	4	3	4	3	3	3	3	3	4	4	3	3	2	2	2	4	4
26	3	2	2	2	3	3	2	3	3	3	2	2	2	2	2	2	3
27	4	1	3	4	3	3	3	3	3	3	3	3	3	2	3	3	4
28	3	2	3	3	3	3	3	3	3	3	3	3	2	2	2	3	3
29	4	3	3	3	4	3	3	4	4	4	3	3	1	2	2	3	4
30	3	2	3	3	3	3	3	3	3	3	3	3	2	2	2	3	3
31	3	1	2	2	2	4	3	2	3	2	1	1	2	1	3	1	4
32	4	1	2	2	1	2	2	2	2	2	2	2	2	1	1	3	3
33	4	4	4	4	4	2	4	4	4	4	2	2	4	1	1	4	4
34	4	2	2	2	3	2	3	2	3	3	4	3	2	2	3	1	3
35	4	2	4	4	3	4	3	4	4	4	3	3	2	2	2	4	4
36	4	3	3	4	4	3	4	4	3	4	3	4	2	1	3	3	4
37	4	3	4	4	4	3	3	4	4	4	3	3	1	2	1	4	4
38	4	3	3	4	1	3	3	3	3	4	3	3	1	1	2	4	4
39	4	2	4	4	4	4	3	3	3	4	2	3	3	3	2	4	3
40	3	3	3	3	3	4	3	3	3	2	2	3	3	1	3	3	2

GAYA PENGASUHAN AUTHORITATIVE

No.	X01	X02	X03	X04	X05	X06	X07	X08	X09	X10	X11	X12	X13	X14	X15	X16	X17
11	4	3	4	4	4	4	4	4	4	4	4	3	1	1	3	4	4
12	2	2	3	3	3	4	3	1	3	2	3	3	3	1	2	3	3
13	4	2	3	3	3	3	4	4	3	3	4	3	1	1	2	4	3
14	3	4	4	3	3	3	4	4	3	2	3	3	2	2	3	3	3
15	4	1	4	4	4	4	4	3	4	3	4	4	2	1	3	4	4
16	4	2	4	4	4	2	4	4	4	4	2	4	1	2	2	4	4
17	3	2	4	3	3	3	3	4	3	3	3	3	3	2	3	4	3



GAYA PENGASUHAN AUTHORITATIVE

No.	X18	X19	X20	X21	X22	X23	X24	GPB
1	3	3	3	2	4	3	3	73
2	4	3	3	3	4	3	3	77
3	4	3	4	4	3	4	3	78
4	3	4	3	3	4	4	3	80
5	2	4	3	4	4	4	4	75
6	4	4	4	1	4	4	3	75
7	3	3	3	2	3	3	3	68
8	4	4	3	3	3	4	3	75
9	3	4	4	4	4	3	3	76
10	3	3	4	3	3	4	2	76
11	4	4	3	4	4	4	2	74
12	2	3	3	3	3	3	3	69
13	1	4	1	1	4	2	4	64
14	3	4	3	3	4	4	3	76
15	2	4	1	4	4	4	4	77
16	3	3	3	3	3	3	3	68
17	2	3	4	4	4	3	3	71
18	1	4	3	1	4	3	3	65
19	3	4	1	3	4	2	2	63
20	3	2	4	4	4	3	1	74
21	2	3	2	2	2	2	3	61
22	3	3	3	3	3	3	3	72
23	4	3	3	3	3	4	1	69
24	3	3	3	4	3	4	4	84
25	4	3	3	3	4	3	3	77
26	3	2	3	2	3	2	3	59
27	3	3	4	4	3	3	2	73
28	2	3	3	3	3	3	2	66
29	3	3	3	3	4	3	4	76
30	3	3	3	2	3	3	3	67
31	1	2	1	1	2	1	4	49
32	3	3	3	3	4	3	3	66
33	3	4	4	3	4	4	4	82
34	3	2	3	3	3	3	3	64
35	3	4	3	2	4	4	3	79
36	3	4	3	3	4	4	2	79
37	4	4	4	2	4	4	4	81
38	3	4	4	3	4	4	3	74
39	3	3	4	4	4	4	3	80
40	2	3	2	3	3	3	3	66



GAYA PENGASUHAN AUTHORITATIVE

No.	X18	X19	X20	X21	X22	X23	X24	GPB
11	3	4	3	4	4	4	4	85
12	3	4	3	3	2	3	3	65
13	4	4	3	4	3	4	3	75
14	2	3	3	3	3	4	2	72
15	2	3	4	3	4	3	2	78
16	3	4	2	4	4	3	1	76
17	3	4	4	3	4	3	3	76



RELIABILITY ANALYSIS - SCALE (ALPHA)

Item-total Statistics Gaya Pengasuhan Authoritative (1)

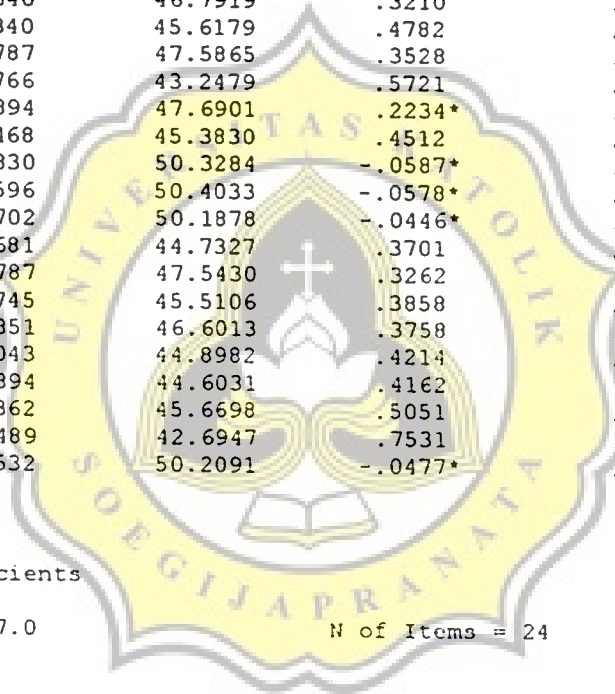
	Scale Mean if Item Deleted	Scale Variance if Item Deleted	Corrected Item-Total Correlation	Alpha if Item Deleted
X01	68.8085	46.3756	.4649	.7677
X02	70.3617	47.0185	.2276*	.7796
X03	69.0638	45.3654	.5549	.7626
X04	69.1702	44.1878	.5623	.7593
X05	69.0213	45.6300	.4547	.7664
X06	69.3404	50.8816	-.1077*	.7957
X07	69.2340	46.7919	.3210	.7735
X08	69.2340	45.6179	.4782	.7655
X09	68.9787	47.5865	.3528	.7732
X10	69.2766	43.2479	.5721	.7569
X11	69.4894	47.6901	.2234*	.7787
X12	69.4468	45.3830	.4512	.7662
X13	70.3830	50.3284	-.0587*	.7958
X14	70.6596	50.4033	-.0578*	.7921
X15	70.1702	50.1878	-.0446*	.7944
X16	69.4681	44.7327	.3701	.7707
X17	68.9787	47.5430	.3262	.7739
X18	69.5745	45.5106	.3858	.7696
X19	69.0851	46.6013	.3758	.7710
X20	69.4043	44.8982	.4214	.7672
X21	69.4894	44.6031	.4162	.7674
X22	68.9362	45.6698	.5051	.7648
X23	69.1489	42.6947	.7531	.7485
X24	69.5532	50.2091	-.0477*	.7950

Reliability Coefficients

N of Cases = 47.0

N of Items = 24

Alpha = .7811



RELIABILITY ANALYSIS - SCALE (ALPHA)

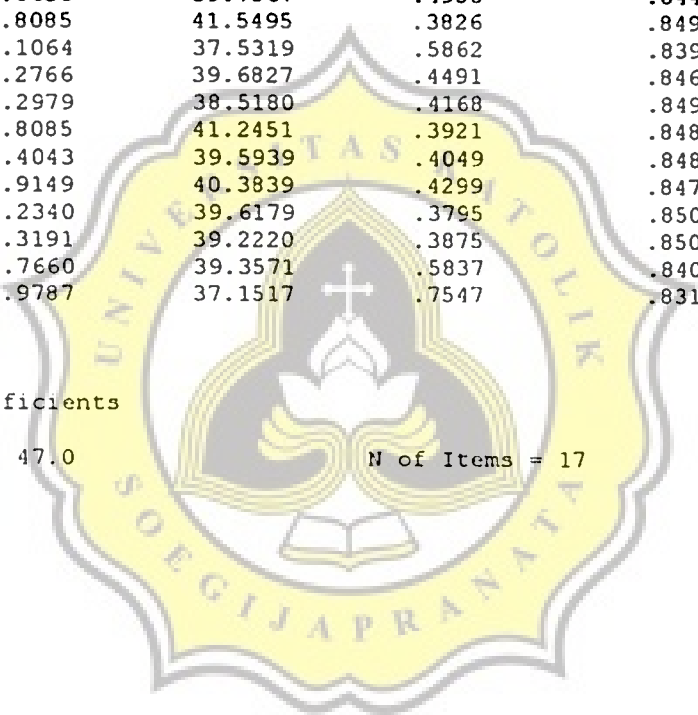
Item-total Statistics Gaya Pengasuhan Authoritative (2)

	Scale Mean if Item Deleted	Scale Variance if Item Deleted	Corrected Item-Total Correlation	Alpha if Item Deleted
X01	51.6383	40.5402	.4738	.8457
X03	51.8936	39.7058	.5483	.8424
X04	52.0000	38.5217	.5656	.8405
X05	51.8511	39.9121	.4530	.8461
X07	52.0638	40.8002	.3423	.8511
X08	52.0638	39.7567	.4950	.8443
X09	51.8085	41.5495	.3826	.8493
X10	52.1064	37.5319	.5862	.8390
X12	52.2766	39.6827	.4491	.8463
X16	52.2979	38.5180	.4168	.8499
X17	51.8085	41.2451	.3921	.8489
X18	52.4043	39.5939	.4049	.8489
X19	51.9149	40.3839	.4299	.8472
X20	52.2340	39.6179	.3795	.8506
X21	52.3191	39.2220	.3875	.8508
X22	51.7660	39.3571	.5837	.8408
X23	51.9787	37.1517	.7547	.8312

Reliability Coefficients

N of Cases = 47.0 N of Items = 17

Alpha = .8533





GAYA PENGASUHAN PERMISIVE

No.	X01	X02	X03	X04	X05	X06	X07	X08	X09	X10	X11	X12	X13	X14	X15	X16	X17
	1	1	2	2	1	1	2	1	2	1	1	4	1	2	2	1	1
1	1	1	1	2	2	2	2	2	3	2	2	3	3	2	2	2	1
2	1	4	1	2	2	3	2	1	3	4	2	3	2	2	1	1	2
3	2	1	1	1	1	1	1	1	1	1	1	3	1	2	2	1	1
4	2	2	1	4	2	3	1	1	1	1	1	4	4	2	1	1	1
5	1	2	1	3	2	1	4	1	4	2	1	4	4	2	1	2	2
6	2	2	2	2	2	2	2	2	3	2	2	3	2	2	2	1	1
7	2	2	1	2	1	2	2	2	2	3	1	3	2	2	2	1	2
8	1	1	2	3	1	3	2	2	3	2	1	4	2	2	1	1	1
9	4	1	1	2	1	1	1	2	3	2	1	4	1	2	1	1	1
10	1	1	1	1	1	4	1	2	2	2	1	4	2	1	1	1	2
11	2	2	2	2	2	2	2	2	1	4	2	2	4	2	2	2	3
12	2	2	2	1	1	1	1	2	3	1	1	3	3	2	1	1	2
13	1	1	1	1	2	3	1	1	3	2	1	4	3	2	1	1	2
14	1	1	1	1	1	3	1	2	2	1	1	3	1	2	1	1	1
15	1	1	1	1	1	2	2	2	3	2	2	3	2	2	2	2	2
16	2	2	2	2	2	2	2	2	3	2	2	3	2	2	2	2	2
17	3	2	2	2	1	3	2	2	4	4	1	4	2	2	2	1	1
18	4	1	2	3	1	4	1	4	3	1	2	2	3	2	2	3	2
19	1	3	3	3	1	1	3	3	3	1	4	1	1	4	1	4	4
20	1	1	1	3	1	2	2	2	2	1	1	4	4	2	1	1	2
21	2	3	2	2	2	2	2	3	2	2	2	3	2	2	2	2	2
22	1	1	2	2	2	3	2	2	3	3	1	4	3	2	2	1	3
23	2	1	1	1	1	3	3	1	2	1	1	3	4	1	2	1	1
24	1	1	1	2	1	1	1	2	2	1	1	1	1	3	1	1	1
25	2	2	2	1	1	2	1	2	2	2	2	3	3	2	2	2	2
26	3	3	2	2	3	3	3	2	2	3	2	3	2	2	3	2	2
27	2	2	2	1	2	2	2	3	3	2	1	4	3	2	2	2	2
28	2	1	2	1	1	3	2	3	3	2	2	3	2	2	2	3	2
29	2	1	1	2	1	1	1	1	1	2	1	3	1	3	2	1	1
30	2	1	2	2	2	2	2	2	2	2	2	3	2	2	2	2	3
31	1	1	2	3	1	3	2	1	2	1	2	3	1	3	3	3	1
32	2	2	2	3	2	3	3	1	3	1	2	4	1	2	3	1	1
33	1	1	1	2	1	1	2	2	3	1	1	4	1	1	1	1	1
34	2	2	2	3	2	2	2	2	1	2	2	3	2	2	3	2	2
35	1	1	1	2	1	3	1	1	3	1	1	3	1	2	2	1	1
36	1	2	1	2	2	2	1	1	2	3	1	3	1	2	1	1	1
37	2	1	1	1	1	2	1	1	3	1	1	3	2	2	1	1	2
38	1	1	1	1	1	2	1	1	4	1	1	4	1	1	1	1	1
39	1	2	2	2	1	2	2	1	1	1	1	4	1	2	3	1	1
40	3	1	2	1	2	2	3	2	3	2	1	4	4	3	2	2	3

GAYA PENGASUHAN PERMISIVE

No.	X01	X02	X03	X04	X05	X06	X07	X08	X09	X10	X11	X12	X13	X14	X15	X16	X17
41	1	1	1	2	1	3	1	1	4	1	1	4	1	2	1	1	1
42	3	2	2	2	2	3	2	3	3	2	2	3	3	3	3	3	3
43	2	1	2	2	1	1	1	1	3	3	2	4	4	2	1	2	1
44	2	2	2	2	2	3	1	4	4	3	2	4	4	3	2	2	2
45	1	1	1	2	2	2	1	1	3	2	1	4	1	2	2	1	1
46	1	1	3	4	1	2	2	2	3	1	1	2	3	4	2	2	3
47	2	2	2	2	2	3	2	2	3	2	2	3	3	2	2	2	2



GAYA PENGASUHAN PERMISIVE

No.	X18	X19	X20	X21	X22	X23	X24	GPC
1	3	2	1	1	2	2	2	39
2	2	2	2	2	2	2	2	47
3	3	1	3	3	3	2	2	53
4	3	1	2	1	1	1	1	32
5	4	1	1	1	1	1	2	43
6	3	1	2	4	1	1	4	53
7	1	1	2	2	1	2	2	45
8	3	1	2	2	2	2	2	46
9	1	1	2	2	1	2	2	43
10	3	1	4	2	2	2	1	44
11	1	1	2	1	1	2	2	38
12	2	2	1	2	2	1	2	50
13	4	1	1	1	1	1	3	41
14	2	1	2	2	1	2	1	41
15	2	1	1	4	1	1	1	35
16	3	2	2	2	2	2	2	51
17	4	1	4	1	3	2	3	56
18	3	2	3	2	2	2	4	58
19	1	3	1	2	4	2	3	57
20	3	2	2	2	2	1	2	45
21	2	2	2	2	2	2	2	51
22	2	1	2	2	2	2	1	49
23	3	1	2	1	3	3	2	44
24	2	1	2	2	2	2	3	36
25	2	2	2	3	2	1	4	49
26	3	3	3	2	3	3	3	62
27	3	2	2	2	2	2	1	51
28	3	3	3	2	3	3	2	55
29	2	2	2	2	2	1	1	37
30	3	2	2	2	2	2	2	50
31	3	3	2	1	3	3	1	49
32	2	2	2	2	2	2	3	51
33	1	1	1	1	1	1	3	34
34	2	3	2	2	2	2	2	51
35	2	1	3	2	2	4	2	42
36	2	1	2	1	2	2	2	39
37	2	1	2	1	2	1	1	36
38	2	1	2	2	1	1	1	34
39	1	1	1	1	1	1	1	35
40	4	2	3	2	3	3	3	60



GAYA PENGASUHAN PERMISIVE

No.	X18	X19	X20	X21	X22	X23	X24	GPC
41	3	1	2	2	2	2	2	41
42	4	1	3	2	3	2	2	61
43	3	2	2	2	1	2	2	47
44	4	2	3	2	3	3	2	63
45	4	2	2	2	3	1	2	44
46	2	4	1	2	2	3	3	54
47	3	2	2	2	3	2	2	54



RELIABILITY ANALYSIS - SCALE (ALPHA)

Item-total Statistics Gaya Pengasuhan Permissive (1)

	Scale Mean if Item Deleted	Scale Variance if Item Deleted	Corrected Item- Total Correlation	Alpha if Item Deleted
X01	45.0000	61.6522	.3913	.8188
X02	45.1702	62.3617	.3826	.8192
X03	45.1277	61.6790	.5728	.8137
X04	44.7234	64.1175	.1983*	.8270
X05	45.2553	63.0204	.4485	.8180
X06	44.4894	63.5597	.2196*	.8266
X07	44.9787	61.6300	.4353	.8170
X08	44.9362	60.2784	.5016	.8138
X09	44.0851	63.0361	.2574*	.8250
X10	44.9149	61.8622	.3594	.8202
X11	45.2766	61.6392	.5333	.8144
X12	43.4043	69.4200	-.2214*	.8431
X13	44.5532	59.9917	.3662	.8213
X14	44.5957	63.3330	.3589	.8204
X15	44.9787	62.8908	.3606	.8202
X16	45.1489	59.1730	.6251	.8085
X17	45.0426	60.3025	.5401	.8125
X18	44.1702	61.7365	.3229	.8223
X19	45.0851	61.0361	.4678	.8155
X20	44.6596	62.2729	.3790	.8193
X21	44.8511	64.5208	.2036*	.8260
X22	44.7234	59.3784	.6003	.8095
X23	44.8298	61.7965	.4252	.8175
X24	44.6383	61.7576	.3649	.8200

Reliability Coefficients

N of Cases = 47.0

N of Items = 24

Alpha = .8260

RELIABILITY ANALYSIS - SCALE (ALPHA)

Item-total Statistics Gaya Pengasuhan Permisive (2)

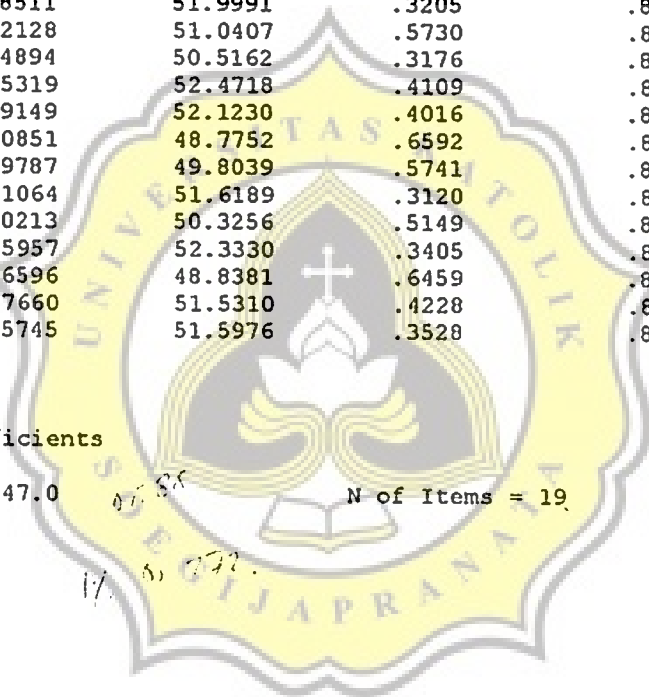
	Scale Mean if Item Deleted	Scale Variance if Item Deleted	Corrected Item-Total Correlation	Alpha if Item Deleted
X01	32.9362	50.9306	.4312	.8445
X02	33.1064	51.8797	.3969	.8458
X03	33.0638	51.1480	.6069	.8391
X05	33.1915	52.9408	.4094	.8458
X07	32.9149	51.5143	.4195	.8449
X08	32.8723	49.8964	.5221	.8403
X10	32.8511	51.9991	.3205	.8497
X11	33.2128	51.0407	.5730	.8396
X13	32.4894	50.5162	.3176	.8533
X14	32.5319	52.4718	.4109	.8454
X15	32.9149	52.1230	.4016	.8456
X16	33.0851	48.7752	.6592	.8341
X17	32.9787	49.8039	.5741	.8382
X18	32.1064	51.6189	.3120	.8510
X19	33.0213	50.3256	.5149	.8407
X20	32.5957	52.3330	.3405	.8482
X22	32.6596	48.8381	.6459	.8346
X23	32.7660	51.5310	.4228	.8448
X24	32.5745	51.5976	.3528	.8483

Reliability Coefficients

N of Cases = 47.0

N of Items = 19

Alpha = .8510





B-1
Skala Tingkah Laku Prosocial pada
Mahasiswa



NAMA :
FAKULTAS-JURUSAN :
SEMESTER :
NIM :
Usia :

Pada kesempatan ini saya ingin meminta bantuan rekan-rekan untuk mengisi sesuai dengan petunjuk pengisian.

PETUNJUK UMUM

1. Isilah identitas di sudut kiri atas dengan jelas.
2. Kerahasiaan identitas dijamin kerahasiaannya.
3. Bacalah setiap pernyataan dengan cermat dan teliti.
4. Ada dua (2) bagian pernyataan : **BAGIAN I** dan **BAGIAN II**.
5. Berilah penilaian yang sejujur-jujurnya pada setiap pernyataan sesuai dengan diri rekan-rekan dengan memberikan tanda silang (X) pada tabel sebelah kanan.
6. Setiap penilaian yang diberikan oleh rekan-rekan adalah benar dan tidak ada yang dianggap salah.
7. Jika telah selesai memberikan penilaian pada setiap pernyataan, periksalah kembali jangan sampai ada pernyataan yang terlewatkan.

PETUNJUK PENGISIAN BAGIAN I

1. Untuk **BAGIAN I** ada empat (4) alternatif penilaian yang tersedia yaitu **Sering (S)**, **Kadang-kadang (KD)**, **Jarang (J)**, dan **Tidak Pernah (TP)**.
2. Untuk masing-masing pernyataan hanya diberikan satu penilaian saja yang sesuai dengan diri rekan-rekan.
3. **Contoh :**

NO	PERNYATAAN	S	KD	J	TP
1.	Saya senang menolong teman saya				X
2.	Saya tidak suka ikut campur masalah teman		X		

4. Jika ada jawaban yang ingin diubah cukup dengan memberikan tanda () pada jawaban yang telah dipilih kemudian berikan tanda silang (X) pada jawaban baru.

5. **Contoh :**

NO	PERNYATAAN	S	KD	J	TP
1.	Saya senang menolong teman saya			X	X
2.	Saya tidak suka ikut campur masalah teman	X	X		

*******SELAMAT MENGERJAKAN*******
DAN TERIMA KASIH ATAS BANTUAN REKAN-REKAN

BAGIAN I

NO.	PERNYATAAN	S	KD	J	TP
1.	Saya malas untuk memberitahu teman yang tidak masuk perihal tes yang akan diadakan dosen.				
2.	Ketika saya sedang makan dan ada pengamen maka saya akan pura-pura tidak tahu.				
3.	Saya akan mengatakan sejujur-jujurnya pada orang tua bila saya telah melakukan kesalahan.				
4.	Meskipun ada teman yang sedang sedih saya segan untuk menghibur karena saya tidak suka terlibat.				
5.	Saya akan mencari alasan ketika ada teman yang akan meminjam uang.				
6.	Saya tidak merasa bersalah bila saya telah berbohong kepada orang tua.				
7.	Saya bersedia menjadi teman berbicara bagi teman-teman yang sedang kesusahan.				
8.	Saya merasa tidak suka bila harus mengerjakan tugas kuliah dengan kelompok karena itu membuang waktu.				
9.	Saya akan memberikan pertolongan pada orang yang terkena kecelakaan di jalan.				
10.	Ketika sedang berada dalam saya berpura-pura tidur bus untuk menghindari pengamen.				
11.	Saya tidak akan melebihi jumlah uang SKS yang saya minta kepada orang tua				
12.	Saya malas untuk menengok teman yang sedang sakit karena dia bukan teman dekat saya.				
13.	Bila ada orng lain yang terkena musibah saya merasa tidak perlu menolongnya karena sudah banyak orang yang memberikan pertolongan.				
14.	Saya senang menyumbangkan sebagian uang saya pada korban bencana alam.				
15.	Apabila ada teman yang sakit saya tidak segan-segan untuk mendengarkan keluh kesah yang dia hadapi.				

16.	Saya tidak suka mengerjakan tugas dalam kelompok karena hanya akan memperlambat pekerjaan.				
17.	Saya merasa ikhlas menolong teman yang sedang kesulitan.				
18.	Saya tidak akan memberikan uang bila bertemu pengemis di tengah jalan.				
19.	Menolong teman yang kesusahan adalah tindakan yang membuang-buang waktu saja.				
20.	Saya senang bekerja sama dengan siapapun.				
21.	Saya rasa menolong orang yang tidak saya kenal kurang bermanfaat bagi saya.				
22.	Saya sering meminta uang kuliah lebih dari yang seharusnya dibayarkan.				





PETUNJUK PENGISIAN BAGIAN II

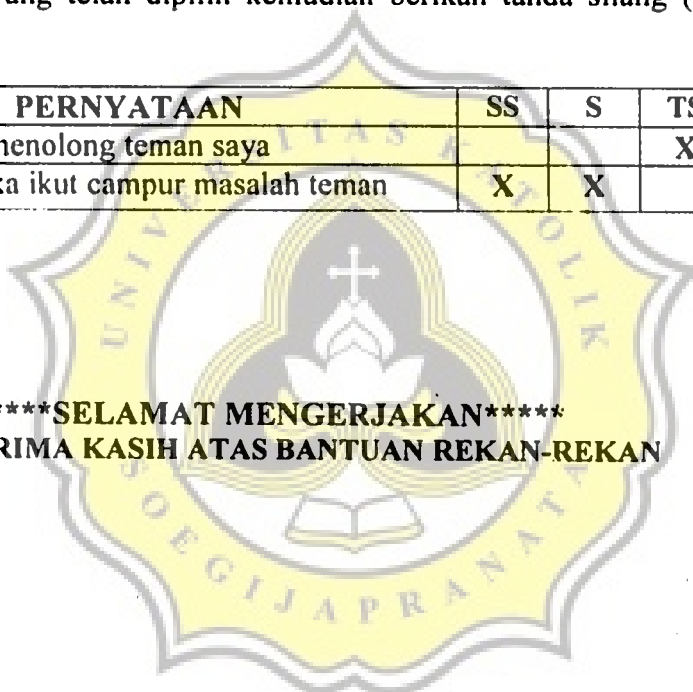
1. Ada tiga (3) sub dalam **BAGIAN II** yaitu : (A), (B) dan (C)
2. Untuk **BAGIAN II** ada empat (4) alternatif penilaian yang tersedia yaitu **Sangat Sesuai (SS)**, **Sesuai (S)**, **Tidak Sesuai (TS)**, dan **Sangat Tidak Sesuai (STS)**.
3. Untuk masing-masing pernyataan hanya diberikan satu penilaian saja yang sesuai dengan diri rekan-rekan.
4. **Contoh :**

NO	PERNYATAAN	SS	S	TS	STS
1.	Saya senang menolong teman saya				X
2.	Saya tidak suka ikut campur masalah teman		X		

5. Jika ada jawaban yang ingin diubah cukup dengan memberikan tanda () pada jawaban yang telah dipilih kemudian berikan tanda silang (X) pada jawaban baru.
6. **Contoh :**

NO	PERNYATAAN	SS	S	TS	STS
1.	Saya senang menolong teman saya			X	X
2.	Saya tidak suka ikut campur masalah teman	X	X		

*******SELAMAT MENGERJAKAN*******
DAN TERIMA KASIH ATAS BANTUAN REKAN-REKAN





TINGKAL LAKU PROSOSIAL - Penelitian

No.	X01	X02	X03	X04	X05	X06	X07	X08	X09	X10	X11	X12	X13	X14	X15	X16	X17
1	3	3	3	2	2	3	3	3	3	4	4	2	4	4	4	3	4
2	4	2	3	3	2	3	4	3	2	2	1	3	3	2	4	3	4
3	4	4	4	2	4	4	4	2	4	2	4	4	4	4	4	3	4
4	4	3	3	3	3	4	4	4	3	2	2	3	4	3	4	4	4
5	4	4	4	4	4	4	4	4	3	3	4	4	3	4	4	3	4
6	4	1	4	3	2	4	3	4	3	1	2	4	4	3	3	4	4
7	4	2	3	3	3	4	2	4	2	4	4	4	4	4	3	4	4
8	4	3	3	3	3	1	4	2	4	4	3	4	4	4	4	2	4
9	3	3	4	3	2	4	4	2	1	3	4	2	4	3	4	3	4
10	3	2	4	4	3	2	4	2	3	2	4	4	4	3	4	2	4
11	4	3	2	3	3	4	4	4	2	4	1	3	3	2	2	4	4
12	4	2	3	4	2	4	4	4	3	2	1	4	4	3	4	4	4
13	2	2	4	3	3	4	4	3	2	1	4	3	3	2	4	4	4
14	3	2	3	4	3	2	4	4	2	4	4	4	4	3	4	4	4
15	4	3	4	4	3	4	4	4	4	4	4	3	4	4	4	4	4
16	1	1	3	2	1	4	3	3	1	1	4	1	1	1	2	1	2
17	4	1	4	4	4	4	4	4	4	1	4	4	4	4	4	4	4
18	4	4	3	3	2	2	4	4	4	2	4	3	3	3	4	4	4
19	3	4	4	4	2	4	4	4	3	4	4	4	4	3	4	3	4
20	4	3	4	4	4	4	4	4	3	3	4	4	4	2	4	4	4
21	4	2	3	4	4	4	4	4	2	2	1	3	2	3	4	4	4
22	4	3	3	2	3	4	4	4	3	2	4	3	4	4	4	3	4
23	4	2	2	4	4	2	4	4	2	1	1	2	2	3	3	2	4
24	4	4	3	4	4	2	4	4	2	4	4	2	2	3	4	2	4
25	1	3	3	4	3	4	4	4	3	3	4	4	4	3	4	4	4
26	2	4	3	4	2	3	4	4	3	4	3	3	2	3	4	3	4
27	4	4	4	4	4	4	4	4	2	4	4	2	4	3	4	2	4
28	4	2	2	3	2	3	2	2	2	3	4	2	3	3	3	2	3
29	4	3	3	3	3	4	3	3	2	2	1	3	4	2	4	2	4
30	4	2	3	3	2	4	4	4	3	1	4	2	3	1	4	3	4
31	4	4	4	4	4	4	4	4	2	2	4	3	4	3	4	4	4
32	2	2	2	2	3	3	4	4	4	2	4	4	4	4	4	3	4
33	4	2	2	2	3	4	3	3	4	3	3	3	2	2	3	2	1
34	4	3	4	4	3	4	4	4	2	2	1	3	4	3	3	4	4
35	2	1	3	4	4	2	4	4	1	1	1	3	4	1	4	4	4
36	3	3	3	4	3	1	4	4	3	2	3	3	3	3	4	3	4
37	2	4	4	2	3	4	4	4	3	2	1	2	2	1	2	4	4
38	4	3	3	4	2	4	4	4	3	2	4	2	2	3	3	4	4
39	3	4	4	4	4	4	4	4	4	4	1	4	4	4	4	4	4
40	4	4	4	4	4	4	4	4	3	3	3	4	4	4	4	4	4

TINGKAL LAKU PROSOSIAL - Penelitian

No.	X01	X02	X03	X04	X05	X06	X07	X08	X09	X10	X11	X12	X13	X14	X15	X16	X17
41	3	4	1	4	2	4	1	1	1	4	1	4	4	1	1	4	1
42	3	4	3	3	4	4	2	4	4	3	4	4	1	2	3	2	2
43	4	3	3	3	4	3	1	4	3	2	2	4	2	3	3	3	4
44	4	4	4	4	2	4	2	4	3	4	2	2	3	3	3	3	2
45	2	4	3	4	3	3	3	3	3	2	3	3	3	4	3	2	4
46	4	4	3	4	2	4	2	4	3	4	3	3	2	4	4	3	2
47	3	3	2	2	4	3	3	3	3	3	3	4	3	2	3	3	4
48	4	4	3	4	4	3	2	3	3	4	4	4	2	3	4	2	4
49	4	4	2	4	4	4	4	4	4	4	4	2	4	4	3	4	4
50	4	3	3	3	2	2	2	4	3	2	3	3	2	3	4	3	3
51	3	4	4	2	4	2	3	4	4	3	3	4	3	4	4	3	4
52	3	1	3	3	3	2	3	2	1	3	3	2	3	3	3	3	4
53	4	3	4	3	4	4	3	4	4	3	3	4	1	4	4	4	3
54	3	3	3	4	4	3	3	3	4	3	4	4	4	3	3	2	3
55	4	4	3	4	3	4	3	4	4	3	4	3	4	4	4	2	4
56	4	4	2	4	4	4	4	4	4	2	4	4	3	4	3	4	3
57	3	2	3	2	2	3	2	2	2	2	3	2	3	3	3	3	3
58	3	4	4	4	3	4	4	4	3	4	4	4	3	3	2	3	4
59	2	2	3	3	2	4	3	4	4	3	3	4	2	2	4	4	2
60	2	2	3	4	2	4	3	4	3	3	4	4	4	3	3	4	2
61	4	4	3	4	4	4	2	4	4	4	4	1	3	3	4	3	4
62	3	2	2	4	2	2	4	2	4	2	2	2	4	3	2	2	2
63	2	4	3	4	2	4	4	4	4	4	4	4	4	4	4	4	4
64	2	3	3	3	2	2	3	2	2	2	1	4	2	2	3	2	2
65	3	2	2	2	2	4	3	4	2	2	2	4	3	2	3	2	4
66	2	3	1	4	3	4	2	4	4	3	3	4	2	3	3	2	3
67	3	4	3	3	4	3	4	3	4	4	4	4	4	4	4	4	4
68	4	4	4	4	3	4	4	4	4	4	4	2	2	2	2	3	3
69	3	2	2	3	2	2	2	3	2	2	3	4	2	2	2	3	4
70	3	3	3	3	4	3	3	2	3	3	3	3	3	3	4	3	3
71	3	2	2	2	2	2	2	2	2	3	4	2	3	3	2	3	2

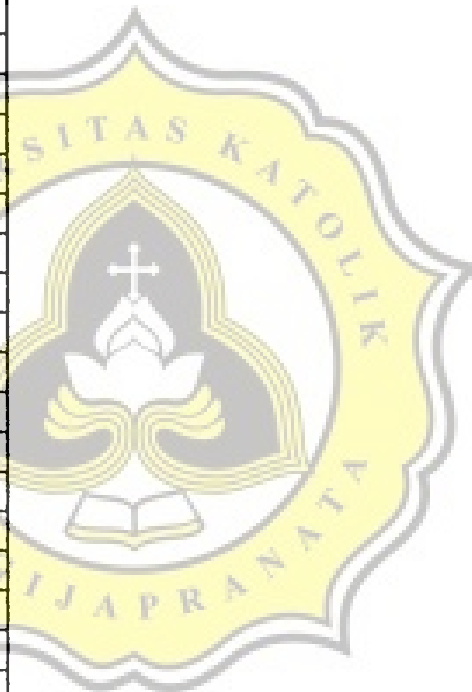
TINGKAL LAKU PROSOSIAL - Penelitian

No.	X18	X19	X20	X21	X22	PK
1	4	2	3	3	4	70
2	3	3	4	3	4	65
3	4	4	4	4	4	81
4	3	4	4	2	3	73
5	4	4	4	4	4	84
6	2	4	4	3	4	70
7	1	4	3	2	4	72
8	2	4	4	4	2	72
9	3	4	3	2	4	69
10	2	4	3	4	4	71
11	3	4	3	3	4	69
12	2	4	4	4	4	74
13	4	4	4	4	4	72
14	2	4	4	2	4	74
15	3	4	4	3	4	83
16	1	2	1	2	4	42
17	3	4	4	4	4	81
18	3	4	4	3	4	75
19	3	4	4	3	4	80
20	4	4	4	2	4	81
21	3	4	3	4	4	72
22	4	4	3	4	4	77
23	3	4	4	3	3	63
24	3	4	3	3	4	73
25	2	4	4	4	4	77
26	4	4	4	2	2	71
27	4	4	4	4	4	81
28	3	2	3	2	1	56
29	2	4	4	4	4	68
30	2	4	4	4	4	69
31	4	4	4	4	4	82
32	4	4	4	4	4	75
33	2	3	1	2	3	57
34	3	4	4	4	4	75
35	4	4	4	1	4	64
36	3	4	4	4	2	70
37	4	3	4	4	4	67
38	2	4	3	2	4	70
39	4	4	4	4	4	84
40	4	4	4	4	4	85



TINGKAL LAKU PROSOSIAL - Penelitian

No.	X18	X19	X20	X21	X22	PK
41	4	4	1	4	4	58
42	2	2	3	1	2	62
43	2	4	2	4	4	67
44	2	2	2	2	3	64
45	4	2	1	3	4	66
46	4	2	3	2	4	70
47	4	4	2	4	1	66
48	4	4	3	2	1	71
49	4	3	4	4	4	82
50	2	3	2	3	3	62
51	4	4	4	4	4	78
52	3	3	3	3	4	61
53	3	4	3	3	4	76
54	4	4	4	2	4	74
55	4	4	3	4	4	80
56	4	4	3	3	4	79
57	3	3	2	3	1	55
58	4	4	3	2	4	77
59	4	4	2	1	2	64
60	4	3	2	3	3	69
61	4	4	3	3	4	77
62	2	2	3	2	3	56
63	4	4	2	4	4	81
64	2	2	2	3	2	51
65	3	3	2	2	2	58
66	3	4	3	1	4	65
67	4	4	2	2	4	79
68	4	4	4	2	4	75
69	3	3	4	3	3	59
70	4	3	2	3	1	65
71	4	2	2	3	2	54



GAYA PENGASUHAN AUTHORITARIAN - Penelitian

No.	X01	X02	X03	X04	X05	X06	X07	X08	X09	X10	X11	X12	X13	X14	X15	X16	X17	GPA
1	1	2	1	2	2	2	3	2	3	3	2	2	2	3	2	2	1	35
2	2	3	2	2	2	2	2	2	2	4	3	3	1	2	2	3	2	39
3	2	3	1	2	2	1	3	3	2	4	3	2	1	3	2	3	2	39
4	2	3	3	2	2	2	2	2	2	3	3	2	2	3	3	3	2	41
5	1	3	1	2	1	1	2	2	1	4	3	2	2	3	2	2	2	34
6	3	3	1	1	2	2	3	1	2	4	3	2	2	3	2	3	2	39
7	3	4	2	2	2	2	2	2	2	3	4	2	3	2	2	3	2	42
8	3	4	2	2	1	1	1	2	1	4	4	1	1	1	2	3	2	35
9	2	4	2	2	2	2	1	1	2	3	3	1	2	3	1	3	2	36
10	2	4	2	2	2	2	2	1	2	3	4	3	1	1	1	3	1	36
11	3	3	3	2	4	3	4	2	3	3	4	3	2	4	2	3	2	50
12	3	4	1	1	1	1	3	1	1	3	4	1	3	4	2	3	3	39
13	2	2	1	2	2	1	3	2	1	3	3	2	2	2	1	3	2	34
14	2	3	2	2	2	2	2	2	2	3	3	2	2	2	2	3	2	38
15	2	2	1	2	2	1	2	2	2	3	2	1	3	2	2	2	2	33
16	4	4	1	1	3	1	2	4	1	4	4	1	4	3	2	3	2	44
17	2	2	1	1	1	1	1	1	1	3	3	1	3	1	2	1	1	26
18	2	2	2	1	2	1	2	2	1	4	2	2	1	2	1	2	2	31
19	2	3	1	2	2	2	2	2	1	3	3	2	2	2	1	2	2	34
20	2	3	1	2	2	1	2	1	1	4	2	2	1	2	2	3	2	33
21	3	3	1	2	2	2	1	2	2	3	2	2	2	3	2	3	2	37
22	3	3	3	2	3	2	3	3	2	3	3	2	2	3	2	3	2	44
23	3	3	2	1	1	2	2	1	2	3	3	1	1	3	2	2	1	33
24	2	3	1	1	2	1	2	2	2	4	4	1	3	2	1	2	2	35
25	1	2	2	2	2	2	3	2	2	2	2	1	1	2	2	4	3	35
26	2	3	2	2	2	4	2	2	2	3	3	2	3	2	2	2	2	40
27	2	3	1	1	2	1	2	2	2	3	2	2	3	3	2	3	2	36
28	2	2	2	2	2	2	2	2	2	3	2	2	2	2	2	3	2	36
29	3	4	2	2	1	2	2	2	2	4	3	3	1	4	2	2	2	41
30	2	4	2	1	2	1	3	3	1	4	4	2	3	3	1	2	1	39
31	3	4	2	2	2	1	1	2	1	4	3	2	2	2	1	2	1	35
32	2	4	2	2	2	1	1	1	1	3	3	1	3	3	2	3	2	39
33	2	3	3	2	2	1	3	1	2	4	3	2	3	2	2	3	3	41
34	2	2	2	1	1	2	1	3	2	3	2	1	3	3	1	2	2	33
35	1	3	2	2	2	2	3	2	3	3	2	3	2	3	2	3	3	41
36	1	2	2	1	2	2	1	1	2	3	3	1	1	2	2	2	1	29
37	1	4	1	2	2	2	3	1	1	4	3	2	2	4	2	3	2	39
38	1	3	1	1	1	1	1	1	1	4	4	4	1	2	1	1	1	29
39	2	3	1	1	1	1	2	1	1	4	3	1	3	4	2	2	2	34
40	1	4	1	1	1	1	2	2	1	4	4	2	1	2	1	4	1	33

GAYA PENGASUHAN AUTHORITARIAN - Penelitian

No.	X01	X02	X03	X04	X05	X06	X07	X08	X09	X10	X11	X12	X13	X14	X15	X16	X17	GPA
41	2	3	2	1	2	2	2	2	2	3	3	2	4	2	2	3	2	39
42	2	3	3	1	2	1	2	2	2	2	2	3	3	2	3	2	4	39
43	1	3	2	1	2	2	2	3	1	1	2	1	2	2	2	4	4	35
44	2	3	3	2	3	2	1	2	1	2	2	2	4	2	1	3	3	38
45	2	3	3	1	2	2	2	2	2	2	2	2	2	3	2	3	2	37
46	1	3	1	2	1	3	3	1	1	1	1	1	3	1	1	3	2	29
47	1	2	3	1	3	2	2	4	2	2	2	2	1	1	2	3	3	36
48	1	1	1	2	2	2	2	2	2	2	2	1	1	2	1	2	4	30
49	2	2	2	2	3	2	2	2	2	2	2	2	2	2	2	2	2	35
50	2	2	2	2	3	2	2	3	2	2	2	2	2	2	2	3	3	38
51	1	1	2	2	4	1	1	2	2	2	2	2	3	2	2	2	2	33
52	2	3	3	2	2	2	3	3	1	1	2	2	3	1	2	4	3	39
53	3	1	1	1	3	1	2	4	2	2	2	2	1	1	2	3	2	33
54	2	1	2	1	2	2	2	2	2	1	2	1	2	2	1	4	2	31
55	2	2	2	1	2	2	2	3	1	2	2	2	2	2	1	3	3	34
56	2	2	2	1	2	1	3	2	2	2	2	1	1	2	1	4	3	33
57	2	3	2	2	3	2	3	4	2	2	2	2	2	2	2	3	4	42
58	2	2	2	1	3	1	2	2	1	2	2	1	3	2	1	3	3	33
59	2	2	3	2	3	2	3	3	1	2	2	2	1	2	2	3	2	37
60	1	3	1	2	1	1	2	2	1	1	1	1	1	1	1	3	3	26
61	2	1	2	2	3	2	2	3	1	2	2	1	2	1	1	4	2	33
62	3	1	4	2	2	2	3	4	2	2	1	2	2	2	2	4	3	41
63	3	1	2	2	2	1	3	3	2	1	1	2	2	1	2	3	3	34
64	3	2	4	2	3	2	3	3	3	2	4	3	4	2	3	3	4	50
65	2	3	2	2	3	3	2	3	3	2	2	1	3	1	2	4	3	41
66	2	3	2	2	2	2	2	1	1	2	2	4	2	2	2	3	3	37
67	1	4	3	2	3	2	2	2	1	1	3	1	2	2	1	2	2	34
68	1	3	1	2	2	2	2	2	1	2	2	1	2	2	2	3	2	32
69	3	2	3	2	3	3	1	3	2	2	2	2	3	2	3	3	2	41
70	2	3	3	2	3	2	2	3	1	1	2	2	2	2	2	3	2	37
71	2	2	3	2	3	2	3	3	3	2	3	2	3	3	2	3	3	44

GAYA PENGASUHAN AUTHORITATIVE - Penelitian



No.	X01	X02	X03	X04	X05	X06	X07	X08	X09	X10	X11	X12	X13	X14	X15	X16	X17	GPB
1	3	3	3	3	3	3	3	3	3	3	4	3	3	3	3	3	3	52
2	4	3	3	3	3	3	3	4	3	2	2	3	3	4	3	3	2	51
3	4	3	3	3	4	4	4	4	3	2	4	3	4	4	4	4	4	61
4	3	3	3	3	3	3	3	4	3	2	3	3	3	3	3	3	3	51
5	4	4	4	4	3	3	3	3	4	3	3	3	3	3	3	3	3	56
6	3	3	3	3	3	3	3	4	3	2	4	3	3	3	3	4	4	54
7	4	3	3	4	3	3	3	3	3	3	4	3	3	3	3	4	3	55
8	3	3	4	4	3	4	4	4	4	3	4	4	4	4	2	4	4	62
9	4	3	3	3	3	2	3	4	3	2	4	3	3	4	4	3	3	54
10	4	3	2	3	3	3	3	4	4	1	4	2	3	4	3	3	3	52
11	4	2	4	3	2	3	4	4	3	3	3	3	3	3	1	3	3	51
12	4	4	4	4	4	3	3	3	4	3	4	4	4	3	3	3	4	61
13	4	4	3	3	4	3	4	3	3	4	4	3	4	3	2	3	4	58
14	3	3	3	3	3	3	3	3	3	3	3	3	3	3	3	3	3	51
15	4	3	4	3	3	3	3	3	3	3	3	3	3	3	3	3	4	54
16	4	4	4	4	3	4	4	4	4	3	4	4	4	4	2	4	4	64
17	4	4	4	4	4	3	4	4	4	3	4	4	4	4	4	4	4	56
18	4	4	3	3	4	3	4	2	3	3	4	2	4	4	3	3	4	57
19	3	3	4	3	3	3	3	3	3	3	3	3	3	3	3	3	4	53
20	3	3	3	3	3	3	3	3	3	3	3	3	3	3	3	3	4	52
21	3	3	4	4	3	3	3	3	3	3	3	3	3	3	4	3	4	55
22	3	3	3	3	3	3	3	3	3	3	3	3	3	3	2	3	3	50
23	4	4	4	4	4	2	3	3	4	3	3	3	3	3	3	3	4	57
24	4	4	4	4	4	3	3	4	4	3	4	3	4	4	2	4	4	62
25	3	3	4	4	4	3	3	3	2	3	2	3	3	4	3	3	3	53
26	4	3	3	3	3	2	3	3	3	3	4	2	3	3	2	3	2	49
27	4	4	3	3	3	3	4	3	3	3	3	3	3	3	2	3	3	53
28	3	3	3	3	3	3	3	2	3	3	3	3	3	3	3	3	3	50
29	3	3	4	3	3	3	3	4	3	2	2	2	3	4	3	3	3	51
30	4	4	3	3	3	3	4	4	3	4	4	2	3	4	4	4	3	59
31	4	3	4	4	4	3	3	4	4	3	4	4	3	4	4	4	4	63
32	4	3	3	4	3	3	3	3	2	3	3	2	3	3	3	3	4	52
33	4	3	3	4	3	3	3	3	3	2	3	3	4	4	2	3	2	52
34	4	4	4	4	3	3	3	3	4	3	4	3	4	3	3	3	4	59
35	3	3	3	2	2	2	3	2	3	2	3	2	3	3	3	3	3	45
36	4	4	3	3	4	3	3	2	3	3	3	3	3	3	3	3	3	53
37	3	3	4	3	3	3	3	4	2	3	4	3	3	3	3	3	4	54
38	3	3	4	4	4	3	3	3	4	4	3	4	3	4	4	3	4	60
39	3	4	4	4	4	3	4	3	4	4	4	4	4	3	4	4	4	64
40	4	4	4	4	4	4	3	3	4	3	4	3	3	4	4	4	4	63

GAYA PENGASUHAN AUTHORITATIVE - Penelitian

No.	X01	X02	X03	X04	X05	X06	X07	X08	X09	X10	X11	X12	X13	X14	X15	X16	X17	GPB
41	4	3	3	3	3	3	4	3	3	2	4	3	4	3	3	4	4	56
42	3	3	2	3	3	3	3	3	3	3	3	3	3	2	3	3	3	49
43	3	3	4	4	3	3	4	3	3	3	3	2	3	4	3	2	4	54
44	3	3	3	2	3	3	3	3	3	3	3	3	3	3	3	3	3	50
45	3	3	3	2	4	4	2	3	3	3	3	3	3	4	3	2	4	52
46	3	3	3	3	4	3	4	3	3	4	3	3	3	3	3	3	3	55
47	3	3	3	3	3	3	3	3	4	3	3	3	3	3	3	3	3	52
48	4	4	3	3	3	2	3	3	3	3	4	3	3	3	4	3	4	55
49	4	4	4	4	4	4	3	4	4	4	4	3	4	4	4	3	4	65
50	3	2	3	3	2	4	3	3	3	3	3	3	3	3	3	3	3	50
51	4	3	4	3	4	3	3	3	4	3	3	3	3	4	4	3	4	58
52	3	3	2	3	3	2	3	3	3	3	3	3	3	3	3	3	3	49
53	2	3	4	2	4	3	4	4	3	3	3	3	4	4	3	4	4	57
54	3	3	3	4	3	4	3	3	4	4	3	3	3	3	3	3	3	55
55	3	4	3	3	3	4	4	4	4	4	3	3	3	3	4	3	4	59
56	4	4	3	2	4	3	3	4	3	4	3	4	3	4	4	3	4	59
57	2	3	3	2	3	2	4	3	3	2	2	2	2	3	3	3	4	46
58	3	4	3	2	3	4	4	4	3	3	4	3	4	3	3	4	4	58
59	2	3	3	3	3	3	4	3	2	3	3	3	3	4	4	1	4	51
60	3	3	3	3	3	4	4	3	4	3	3	3	3	3	3	3	3	54
61	3	4	3	2	3	4	3	3	4	4	4	3	3	4	4	3	4	58
62	3	3	3	2	3	2	3	4	2	2	3	3	2	3	2	3	3	46
63	4	4	4	2	4	4	3	3	4	4	3	4	2	4	4	3	4	60
64	2	3	3	2	3	4	3	2	3	2	2	3	2	3	2	3	3	45
65	3	3	3	3	3	3	3	3	2	2	4	3	2	3	2	3	2	47
66	3	3	3	1	3	3	4	2	4	3	3	2	4	4	3	3	3	51
67	3	4	4	3	4	4	4	4	3	3	4	3	4	2	3	3	4	59
68	3	3	3	3	3	4	3	4	3	4	4	2	3	3	4	3	3	55
69	2	4	4	2	3	3	2	3	2	4	2	3	2	3	3	2	3	47
70	2	3	4	3	3	3	3	3	4	3	3	3	3	4	3	2	2	51
71	2	3	3	3	3	3	3	3	3	2	2	2	3	2	3	2	3	45

GAYA PENGASUHAN PERMISIVE - Penelitian

No	X01	X02	X03	X04	X05	X06	X07	X08	X09	X10	X11	X12	X13	X14	X15	X16	X17
1	3	2	2	2	3	2	2	2	3	2	2	2	2	2	2	2	2
2	3	2	2	2	3	2	2	2	3	3	3	2	2	3	3	3	3
3	2	1	2	1	1	2	3	1	2	2	1	2	1	3	1	2	2
4	2	2	2	2	2	2	2	2	2	2	2	2	2	3	2	2	2
5	1	2	1	2	1	2	2	1	2	2	1	1	2	2	1	2	2
6	1	1	1	2	2	2	2	1	3	2	2	1	1	3	1	2	1
7	1	2	2	2	1	1	1	1	2	2	1	2	3	3	2	2	2
8	1	1	1	1	2	2	2	1	1	1	2	1	1	2	3	2	3
9	2	2	2	2	2	2	2	1	2	2	2	1	1	2	1	2	1
10	4	2	2	2	2	1	1	1	2	2	2	1	1	4	2	3	3
11	3	2	2	2	2	1	1	1	4	1	2	2	1	3	2	2	1
12	2	2	2	2	2	1	1	1	4	1	2	2	1	2	2	2	1
13	2	2	2	1	1	2	3	1	2	3	1	1	2	2	1	2	2
14	2	2	2	2	2	2	2	2	2	2	2	2	2	2	2	2	2
15	3	2	2	2	2	2	2	1	4	2	2	1	2	3	1	2	2
16	1	1	1	1	1	1	1	1	1	2	1	1	1	2	1	2	2
17	1	1	1	1	1	1	2	1	2	1	1	1	2	4	1	2	1
18	2	2	1	2	2	2	2	1	3	2	1	2	1	3	3	1	2
19	2	2	1	2	1	2	2	1	2	2	1	1	1	3	1	2	1
20	2	2	1	2	1	2	2	2	2	3	2	2	2	2	2	2	2
21	1	2	1	2	2	2	2	1	3	2	1	1	2	3	1	2	2
22	2	1	2	2	2	2	2	2	2	2	2	2	2	3	2	1	2
23	2	1	1	2	2	2	2	1	2	3	2	2	1	3	2	2	2
24	1	1	1	1	2	1	1	1	1	1	1	1	2	2	1	1	1
25	2	2	2	2	1	1	2	1	3	3	2	1	2	2	1	2	2
26	2	2	2	2	2	2	3	2	2	3	2	2	2	4	3	3	2
27	1	1	1	1	1	1	1	1	4	1	1	1	1	3	1	2	2
28	2	2	2	2	2	2	2	1	3	2	2	2	3	3	2	2	2
29	1	1	2	1	2	1	1	1	1	2	2	2	1	2	2	2	1
30	1	1	2	1	2	1	1	2	2	2	2	1	1	2	2	2	1
31	1	1	1	1	1	1	2	1	2	2	1	1	1	3	1	2	1
32	2	1	1	2	2	2	1	1	2	2	1	1	1	3	1	2	2
33	1	3	1	2	2	3	3	1	2	3	2	1	1	3	2	2	2
34	2	1	1	2	2	2	2	2	3	3	1	1	1	3	2	3	2
35	2	2	2	2	2	2	3	2	3	3	2	2	3	3	3	2	2
36	2	2	2	1	3	2	3	1	3	3	2	2	3	1	2	2	2
37	1	1	2	2	2	1	2	1	3	2	2	2	1	2	1	2	2
38	1	2	1	2	2	2	2	1	3	1	4	1	1	4	1	2	1
39	1	1	1	1	1	1	1	1	2	1	1	1	1	1	1	1	1
40	1	1	1	1	1	4	1	1	1	1	1	1	1	3	1	2	2

GAYA PENGASUHAN PERMISIVE - Penelitian

No.	X01	X02	X03	X04	X05	X06	X07	X08	X09	X10	X11	X12	X13	X14	X15	X16	X17
41	1	1	1	1	1	2	1	1	2	2	1	2	1	1	1	2	1
42	3	2	1	2	3	2	1	2	1	2	1	3	1	2	2	3	3
43	2	2	1	1	2	1	2	1	2	2	2	2	2	2	2	2	2
44	3	2	2	1	2	2	2	2	2	2	2	2	1	2	1	2	2
45	2	2	2	2	1	2	1	2	1	2	2	1	2	2	2	2	2
46	2	1	1	2	3	1	2	2	1	2	1	2	1	2	2	2	2
47	3	2	2	1	3	2	2	2	1	1	2	1	1	2	2	2	2
48	2	1	2	3	3	2	2	2	1	1	1	2	2	2	1	1	1
49	2	1	1	1	2	1	2	2	1	1	1	1	1	1	1	1	1
50	3	1	1	1	3	2	3	2	2	2	2	1	1	2	2	2	2
51	2	2	2	1	2	2	2	1	1	3	1	1	2	1	2	1	1
52	2	1	2	1	3	3	1	2	2	3	2	2	1	2	2	2	2
53	1	2	1	1	2	3	2	3	2	1	1	1	1	1	2	2	2
54	2	2	1	2	3	1	2	2	1	2	2	1	1	2	2	2	1
55	2	1	2	2	2	2	1	2	1	1	1	1	1	1	2	1	1
56	2	1	1	1	3	1	2	1	3	2	1	1	1	1	1	1	2
57	3	2	2	3	1	1	2	2	2	2	2	2	2	2	2	2	3
58	2	1	1	1	3	1	2	1	2	1	2	2	1	2	1	2	2
59	1	2	1	3	1	2	2	2	2	2	2	2	2	2	2	2	2
60	3	1	1	2	2	1	2	2	2	1	2	2	2	1	1	2	3
61	1	1	1	1	3	1	2	2	3	2	1	1	1	1	1	1	1
62	2	2	1	2	3	1	2	2	2	2	3	2	2	2	2	2	2
63	1	2	1	1	1	2	1	1	2	1	1	1	2	1	2	1	1
64	3	2	2	2	1	3	3	2	2	3	2	2	2	2	2	2	3
65	2	2	2	2	2	2	2	2	2	2	2	2	2	2	2	2	2
66	1	2	2	1	2	2	2	1	3	2	2	2	2	2	2	1	1
67	1	1	1	2	4	1	2	1	2	1	1	1	1	1	1	1	2
68	2	2	1	1	3	1	2	1	1	2	1	1	1	2	2	2	2
69	1	2	2	1	3	2	2	1	3	2	3	2	2	2	2	1	1
70	3	2	1	1	2	1	2	2	2	3	2	2	2	2	1	1	2
71	2	2	1	1	4	2	3	3	3	3	4	2	2	2	2	1	1

GAYA PENGASUHAN PERMISIVE - Penelitian



No.	X18	X19	GPC
1	2	2	41
2	2	3	48
3	2	2	33
4	2	3	40
5	2	2	31
6	1	2	31
7	1	1	32
8	2	1	30
9	2	2	33
10	3	3	41
11	3	2	37
12	3	2	35
13	2	1	33
14	2	2	38
15	2	2	39
16	1	1	23
17	2	1	27
18	2	3	37
19	2	1	30
20	2	2	37
21	1	2	33
22	1	2	36
23	1	1	34
24	1	1	22
25	2	3	36
26	2	3	45
27	3	2	29
28	2	2	40
29	1	3	29
30	1	2	29
31	3	2	28
32	2	2	31
33	2	2	38
34	2	2	37
35	2	2	44
36	1	1	38
37	1	1	31
38	2	1	34
39	1	1	20
40	2	1	27



GAYA PENGASUHAN PERMISIVE - Penelitian

No.	X18	X19	GPC
41	2	1	25
42	1	2	37
43	1	2	33
44	2	2	36
45	2	2	34
46	1	3	33
47	1	2	34
48	1	2	32
49	1	1	23
50	2	3	37
51	1	1	29
52	1	3	37
53	1	1	30
54	1	2	32
55	1	1	26
56	1	2	28
57	2	3	40
58	1	2	30
59	1	3	36
60	1	2	33
61	1	4	29
62	1	4	39
63	2	2	26
64	2	2	42
65	2	2	38
66	1	4	35
67	1	2	27
68	1	3	31
69	1	4	37
70	1	3	35
71	1	2	41



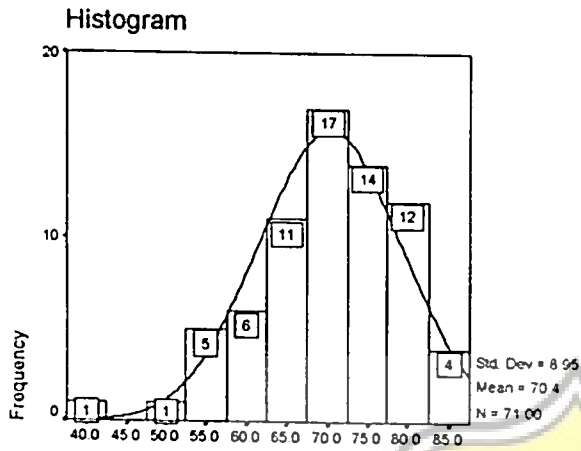




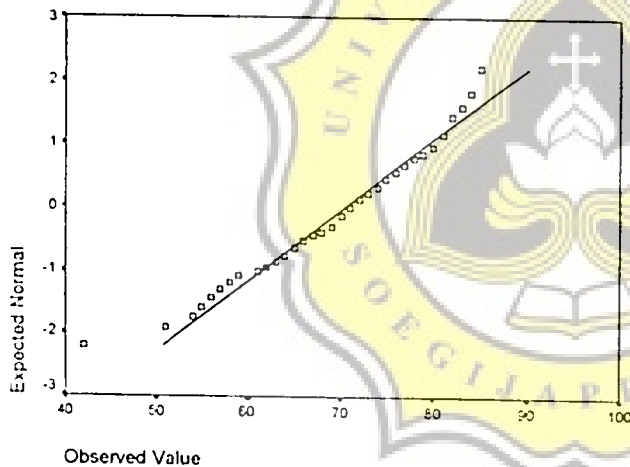
D-1

UJI NORMALITAS

Tingkah Laku Prososial



Normal Q-Q Plot of Tingkah Laku Prososial



NPar Tests

One-Sample Kolmogorov-Smirnov Test

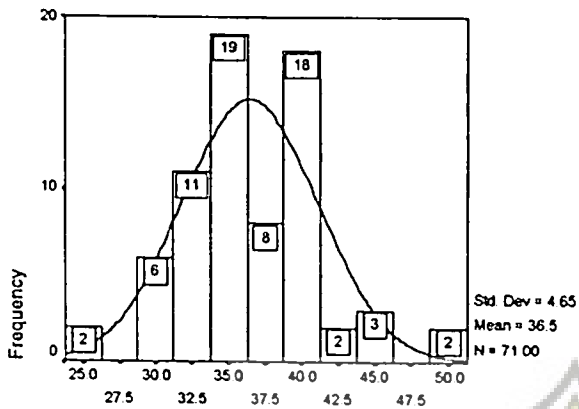
		Tingkah Laku Prososial
N		71
Normal Parameters ^{a,b}	Mean	70.35
	Std. Deviation	8.95
Most Extreme Differences	Absolute	.088
	Positive	.051
	Negative	-.088
Kolmogorov-Smirnov Z		.740
Asymp. Sig. (2-tailed)		.644

a. Test distribution is Normal.

b. Calculated from data.

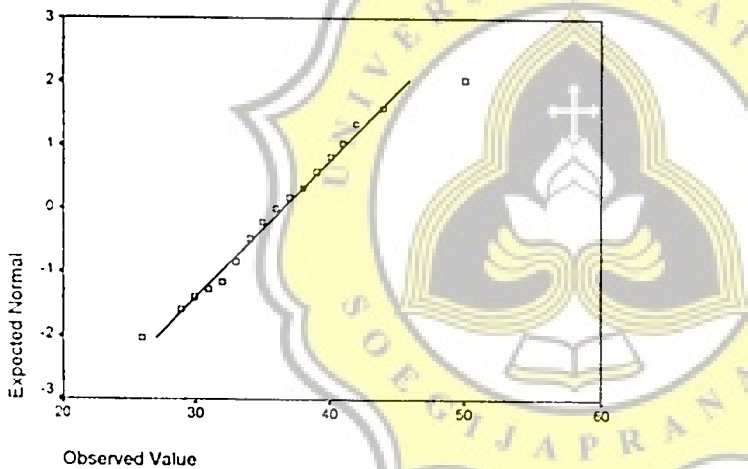
Gaya Pengasuhan Authoritarian

Histogram



Gaya Pengasuhan Authoritarian

Normal Q-Q Plot of Gaya Pengasuhan Authoritarian



NPar Tests

One-Sample Kolmogorov-Smirnov Test

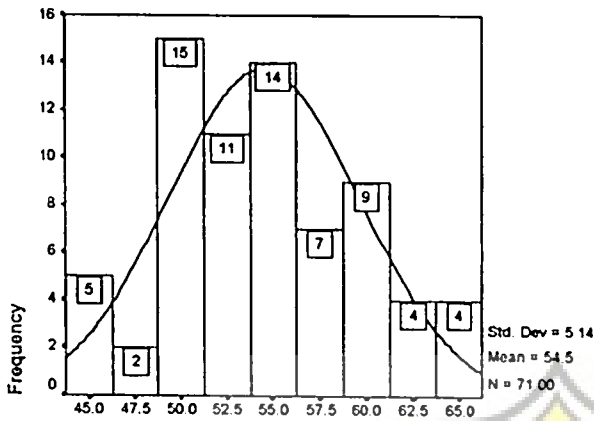
		Gaya Pengasuhan Authoritarian
N		71
Normal Parameters ^{a,b}	Mean	36.45
	Std. Deviation	4.65
Most Extreme Differences	Absolute	.102
	Positive	.087
	Negative	-.102
Kolmogorov-Smirnov Z		.862
Asymp. Sig. (2-tailed)		.448

a. Test distribution is Normal.

b. Calculated from data.

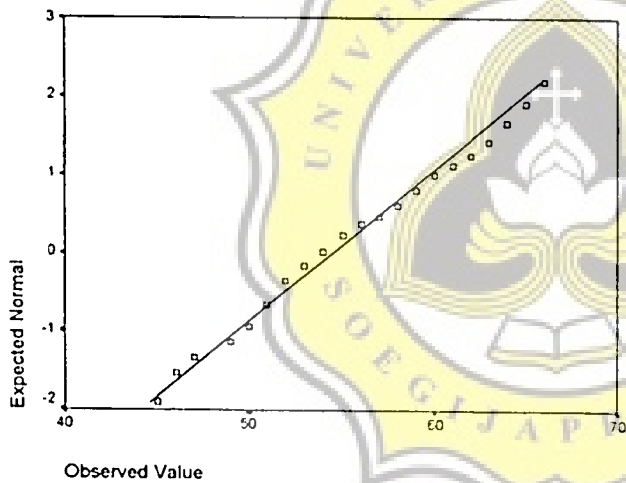
Gaya Pengasuhan Authoritative

Histogram



Gaya Pengasuhan Authoritative

Normal Q-Q Plot of Gaya Pengasuhan Authoritative



NPar Tests

One-Sample Kolmogorov-Smirnov Test

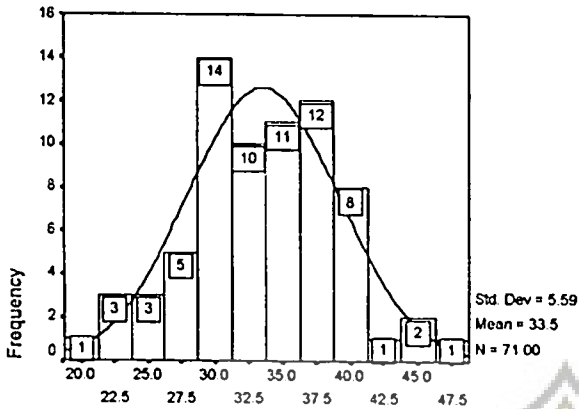
		Gaya Pengasuhan Authoritative
N		71
Normal Parameters ^{a,b}	Mean	54.46
	Std. Deviation	5.14
	Most Extreme Differences	
	Absolute	.093
	Positive	.093
	Negative	-.053
Kolmogorov-Smirnov Z		.780
Asymp. Sig. (2-tailed)		.577

a. Test distribution is Normal.

b. Calculated from data.

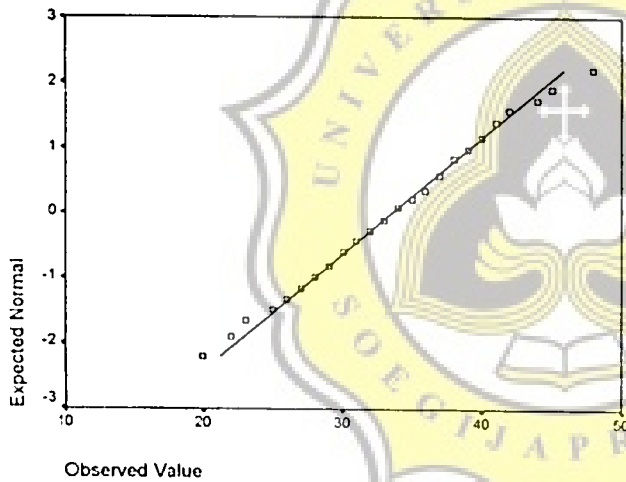
Gaya Pengasuhan Permissive

Histogram



Gaya Pengasuhan Permissive

Normal Q-Q Plot of Gaya Pengasuhan Permissive



Non-Param Tests

One-Sample Kolmogorov-Smirnov Test

		Gaya Pengasuhan Permissive
N		71
Normal Parameters ^{a,b}	Mean	33.55
	Std. Deviation	5.59
Most Extreme Differences	Absolute	.069
	Positive	.046
	Negative	-.069
Kolmogorov-Smirnov Z		.585
Asymp. Sig. (2-tailed)		.884

a. Test distribution is Normal.

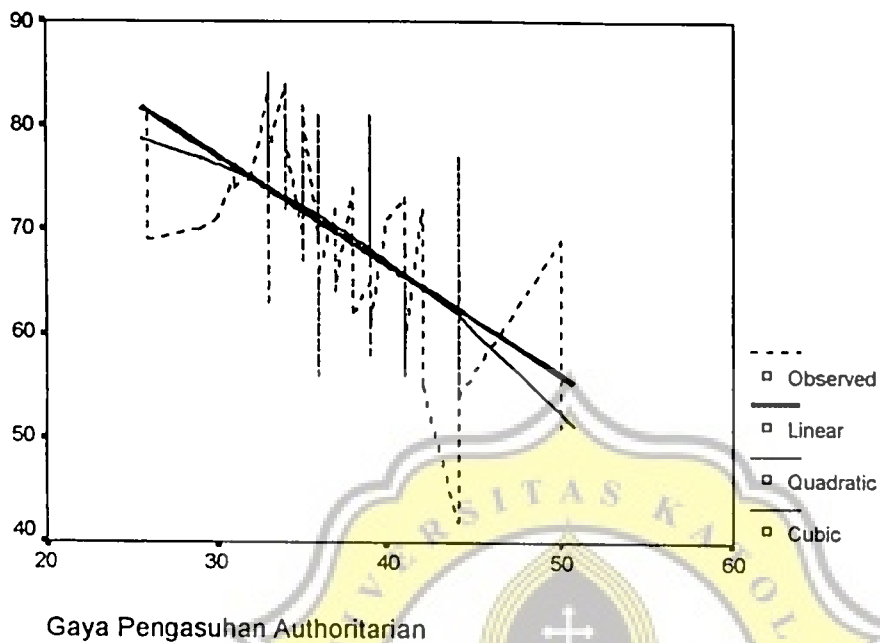
b. Calculated from data.



D-2

UJI LINIERITAS

Tingkah Laku Prososial



Gaya Pengasuhan Authoritarian

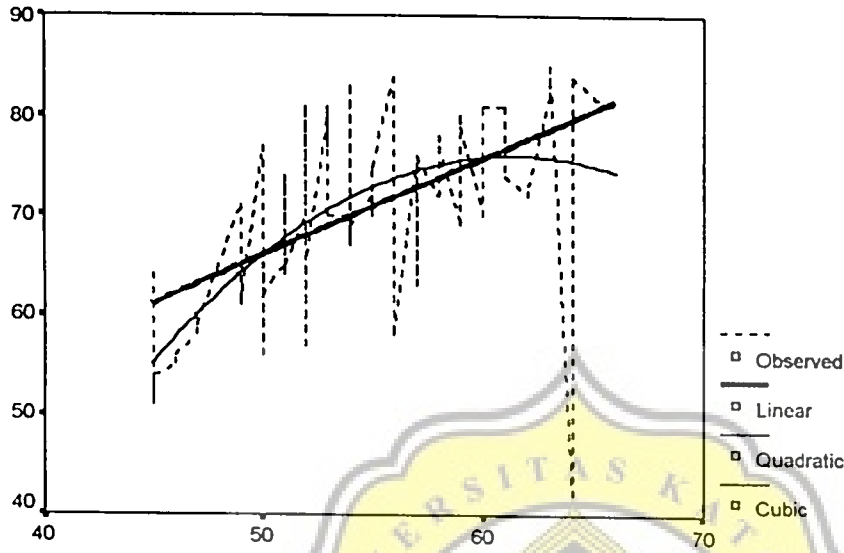
Independent: GPA

Dependent	Mth	Rsq	d.f.	F	Sigf	b0	b1	b2	b3
TPLS	LIN	.299	69	29.49	.000	108.746	-1.0533		
TPLS	QUA	.310	68	15.27	.000	72.4719	.9199	-.0264	
TPLS	CUB	.310	68	15.27	.000	72.4719	.9199	-.0264	

Notes:

Tolerance limits reached; some dependent variables were not entered.

Tingkah Laku Prososial



Gaya Pengasuhan Authoritative

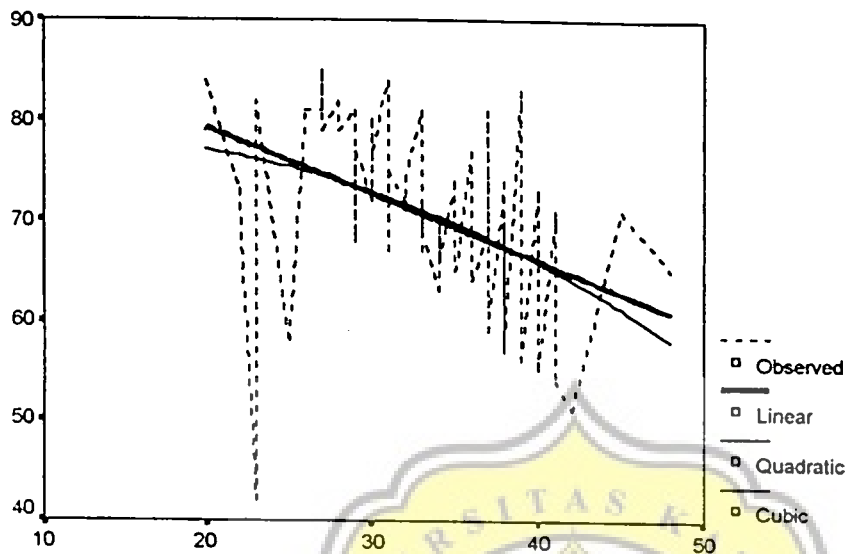
Independent: GPB

Dependent	Mth	Rsq	d.f.	F	Sigf	b0	b1	b2	b3
TPLS	LIN	.315	69	31.77	.000	17.1310			
TPLS	QUA	.387	68	21.47	.000	-215.50	9.4996	-.0774	
TPLS	CUB	.387	68	21.47	.000	-215.50	9.4996	-.0774	

Notes:

1. Tolerance limits reached; some dependent variables were not entered.

Tingkah Laku Prososial



Gaya Pengasuhan Permissive

Independent: GPC

Dependent	Mth	Rsq	d.f.	F	Sigf	b0	b1	b2	b3
TPLS	LIN	.171	69	14.22	.000	92.5500	-.6616		
TPLS	QUA	.176	68	7.26	.001	76.2404	.3410	-.0150	
TPLS	CUB	.176	68	7.26	.001	76.2404	.3410	-.0150	

Notes:

9 Tolerance limits reached; some dependent variables were not entered.



D-3

UJI HIPOTESIS

Regression

Descriptive Statistics

	Mean	Std. Deviation	N
Tingkah Laku Prososial	70.35	8.95	71
Gaya Pengasuhan Authoritarian	36.45	4.65	71
Gaya Pengasuhan Authoritative	54.46	5.14	71
Gaya Pengasuhan Permissive	33.55	5.59	71

Correlations

		Tingkah Laku Prososial	Gaya Pengasuhan Authoritarian	Gaya Pengasuhan Authoritative	Gaya Pengasuhan Permissive
Pearson Correlation	Tingkah Laku Prososial	1.000	-.547	.561	-.413
	Gaya Pengasuhan Authoritarian	-.547	1.000	-.520	.341
	Gaya Pengasuhan Authoritative	.561	-.520	1.000	-.773
	Gaya Pengasuhan Permissive	-.413	.341	-.773	1.000
Sig. (1-tailed)	Tingkah Laku Prososial		.000	.000	.000
	Gaya Pengasuhan Authoritarian	.000		.000	.002
	Gaya Pengasuhan Authoritative	.000	.000		.000
	Gaya Pengasuhan Permissive	.000	.002	.000	
N	Tingkah Laku Prososial	71	71	71	71
	Gaya Pengasuhan Authoritarian	71	71	71	71
	Gaya Pengasuhan Authoritative	71	71	71	71
	Gaya Pengasuhan Permissive	71	71	71	71

Model Summary

Model	R	R Square	Adjusted R Square	Std. Error of the Estimate
1	.636 ^a	.405	.378	7.06

- a. Predictors: (Constant), Gaya Pengasuhan Permissive, Gaya Pengasuhan Authoritarian, Gaya Pengasuhan Authoritative

ANOVA^b

Model		Sum of Squares	df	Mean Square	F	Sig.
1	Regression	2269.389	3	756.463	15.180	.000 ^a
	Residual	3338.808	67	49.833		
	Total	5608.197	70			

a. Predictors: (Constant), Gaya Pengasuhan Permisive, Gaya Pengasuhan Authoritarian, Gaya Pengasuhan Authoritative

b. Dependent Variable: Tingkah Laku Prososial

Coefficients^a

Model		Unstandardized Coefficients		Standardized Coefficients	t	Sig.	Correlations		
		B	Std. Error	Beta			Zero-order	Partial	Part
1	(Constant)	59.178	25.938		2.281	.026			
	Gaya Pengasuhan Authoritarian	-.674	.214	-.350	-3.153	.002	-.547	-.359	-.297
	Gaya Pengasuhan Authoritative	.658	.286	.378	2.299	.025	.561	.270	.217
	Gaya Pengasuhan Permisive	-.304E-03	.239	-.002	-.013	.990	-.413	.002	-.001

a. Dependent Variable: Tingkah Laku Prososial



SUMBANGAN EFEKTIF DAN RELATIF

No.	TLP	GPA	GPB	GPC	TLP*GPA	TLP*GPB	TLP*GPC
1	70	35	52	41	2450	3640	2870
2	65	39	51	48	2535	3315	3120
3	81	39	61	33	3159	4941	2673
4	73	41	51	40	2993	3723	2920
5	84	34	56	31	2856	4704	2604
6	70	39	54	31	2730	3780	2170
7	72	42	55	32	3024	3960	2304
8	72	35	62	30	2520	4464	2160
9	69	36	54	33	2484	3726	2277
10	71	36	52	41	2556	3692	2911
11	69	50	51	37	3450	3519	2553
12	74	39	61	35	2886	4514	2590
13	72	34	58	33	2448	4176	2376
14	74	38	51	38	2812	3774	2812
15	83	33	54	39	2739	4482	3237
16	42	44	64	23	1848	2688	966
17	81	26	66	27	2106	5346	2187
18	75	31	57	37	2325	4275	2775
19	80	34	53	30	2720	4240	2400
20	81	33	52	37	2673	4212	2997
21	72	37	55	33	2664	3960	2376
22	77	44	50	36	3388	3850	2772
23	63	33	57	34	2079	3591	2142
24	73	35	62	22	2555	4526	1606
25	77	35	53	36	2695	4081	2772
26	71	40	49	45	2840	3479	3195
27	81	36	53	29	2916	4293	2349
28	56	36	50	40	2016	2800	2240
29	68	41	51	29	2788	3468	1972
30	69	39	59	29	2691	4071	2001
31	82	35	63	28	2870	5166	2296
32	75	39	52	31	2925	3900	2325
33	57	41	52	38	2357	2964	2166
34	75	33	59	37	2475	4425	2775
35	64	41	45	44	2624	2880	2816
36	70	29	53	38	2030	3710	2660
37	67	39	54	31	2613	3618	2077
38	70	29	60	34	2030	4200	2380
39	84	34	64	20	2856	5376	1680
40	85	33	63	27	2805	5355	2295
41	58	39	56	25	2262	3248	1450
42	62	39	49	37	2418	3038	2294
43	67	35	54	33	2345	3618	2211
44	64	38	50	36	2432	3200	2304
45	66	37	52	34	2442	3432	2244
46	70	29	55	33	2030	3850	2310
47	66	36	52	34	2376	3432	2244
48	71	30	55	32	2130	3905	2272
49	82	35	65	23	2870	5330	1886
50	62	38	50	37	2356	3100	2294
51	78	33	58	29	2574	4524	2262
52	61	39	49	37	2379	2989	2257
53	76	33	57	30	2508	4332	2280
54	74	31	55	32	2294	4070	2368
55	80	34	59	26	2720	4720	2080
56	79	33	59	28	2607	4661	2212
57	55	42	46	40	2310	2530	2200

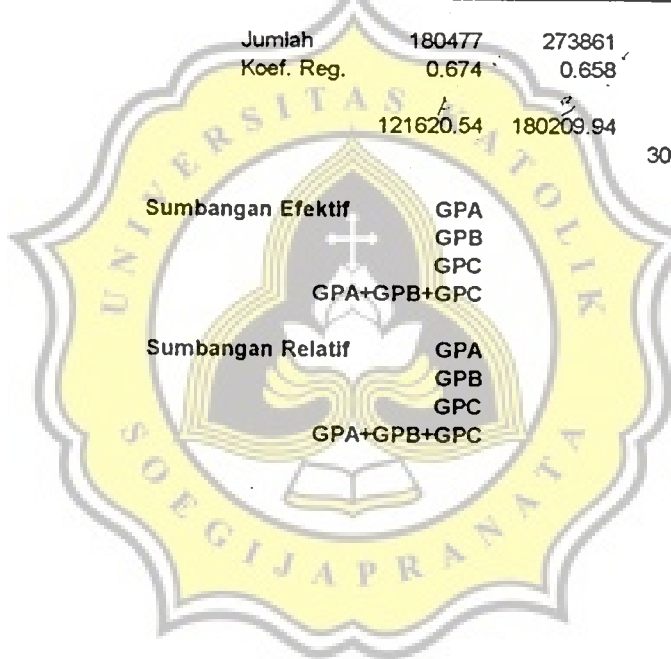
SUMBANGAN EFEKTIF DAN RELATIF

No.	TLP	GPA	GPB	GPC	TLP*GPA	TLP*GPB	TLP*GPC
58	77	33	58	30	2541	4466	2310
59	64	37	51	36	2368	3264	2304
60	69	26	54	33	1794	3726	2277
61	77	33	58	29	2541	4466	2233
62	56	41	46	39	2296	2576	2184
63	81	34	60	26	2754	4860	2106
64	51	50	45	42	2550	2295	2142
65	58	41	47	38	2378	2726	2204
66	65	37	51	35	2405	3315	2275
67	79	34	59	27	2686	4661	2133
68	75	32	55	31	2400	4125	2325
69	59	41	47	37	2419	2773	2183
70	65	37	51	35	2405	3315	2275
71	54	44	45	41	2376	2430	2214

Jumlah 180477 273861 166130
 Koef. Reg. 0.674 0.658 0.003

121620.54 180209.94 504.92
 302335.41

Sumbangan Efektif	GPA	15.2 %
	GPB	22.5 %
	GPC	0.1 %
	GPA+GPB+GPC	37.8 %
Sumbangan Relatif	GPA	40.2 %
	GPB	59.6 %
	GPC	0.2 %
	GPA+GPB+GPC	100.0 %



Handwritten notes:
 1/2 x 32.5
 3/4 x 22.5
 1/4 x 0.1
 0.003 x 100 = 0.3
 0.003 x 100 = 0.3





N o m o r : B.2.01/ 322. /UKS.07/ XI /2005

22 Nopember.. 2005

Lamp. : -

Hal : Ijin Penelitian

Yth, Wakil Rektor I

Universitas Katolik Soegijapranata Semarang

di

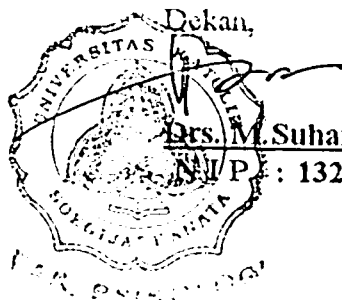
Semarang

Kami mohon bantuan dengan hormat kepada Bapak/Ibu, untuk berkenan memberikan ijin kepada mahasiswa/i Fakultas Psikologi Unika Soegijapranata Semarang dibawah ini :

N a m a : Nike Fajar Sari
NIM / NIRM : 00.40.0270
Tempat/ Tgl.Lahir : Semarang / 9 Maret 1983
A l a m a t : Jl. Puspogiwang Timur No 2
Semarang

Akan mengadakan Penelitian di Fakultas Psikologi Unika Soegijapranata Semarang,, Dalam Rangka penulisan Tugas Skripsi Tingkat Sarjana dengan judul : *"Hubungan Gaya Pengasuhan Orang Tua Dengan Tingkah Laku Prososial Pada Mahasiswa"*

Demikian atas bantuan serta kerja sama Bapak/Ibu, kami mengucapkan terima kasih.



Drs. M. Suharsono, MSI

NIP : 132.049.999

Tembusan : Yth.

- Mhs. Yang Bersangkutan



Nomor : F.09/0447 /UKS.01.1/XI/2005

24 November 2005

Lampiran : -

Hal : **Ijin Penelitian**

Kepada : Yth. Sdr. **NIKE FAJAR SARI (00.40.0270)**
Fakultas Psikologi Universitas Katolik Soegijapranata
Di Semarang.

Dengan hormat,
Berdasarkan surat dari Dekan Fakultas Psikologi No. B.2.01/383/UKS.07/XI/2005 tanggal 22 November 2005 perihal seperti pada pokok surat, dengan ini memberikan ijin kepada Saudara untuk melakukan penelitian di lingkungan Unika Soegijapranata.

Dengan judul penelitian :

"Hubungan Gaya Pengasuhan Orang Tua Dengan Tingkah Laku Prososial Pada Mahasiswa"

Pada prinsipnya pihak Universitas tidak keberatan, dengan catatan:

1. Tidak mengganggu aktivitas para Narasumber
2. Setelah selesai penelitian harap memberikan laporan

Atas perhatiannya diucapkan terima kasih.



Rektor,
Wakil Rektor I,

Thomas Budi Santoso, Ed.D

Tembusan : Yth

- Dekan /Ka. Progdi di lingkungan Unika
- Pembantu Dekan I /Kajur di lingkungan Unika
- Ka. Biro di lingkungan Unika





SURAT KETERANGAN

No : F.09/441/UKS.07/XI/2005

Yang bertanda tangan dibawah ini :

Nama : Drs. Suharsono. MSi
Jabatan : Dekan Fakultas Psikologi

Menerangkan dengan sesungguhnya bahwa nama tersebut dibawah ini :

Nama : Nike Fajar Sari
NIM : 00.40.0270
Tempat/Tgl.Lahir : Semarang / 9 Maret 1983
Alamat : Jl. Puspogiwang Timur No - 2
Semarang

Benar – benar telah melaksanakan penelitian di Fakultas Psikologi Unika Soegijapranata Semarang pada tanggal 29 Nov' 2005,dalam rangka penyusunan tugas skripsi dengan judul : *"Hubungan Gaya Pengasuh Orang Tua Dengan Tingkah Laku Prososial Pada Mahasiswa "*

Demikian Surat Keterangan ini saya buat atas permintaan yang bersangkutan untuk dapat dipergunakan sebagai mana perlunya.

Semarang, 30 Nopember ' 2005

Dekan,

Drs. M Suharsono. MSi

NIP : 132.049.999

FAK. PSIKOLOGI