

LAMPIRAN



LAMPIRAN A

Data Uji Coba



LAMPIRAN A - 1

Data Uji Coba
EMPATI

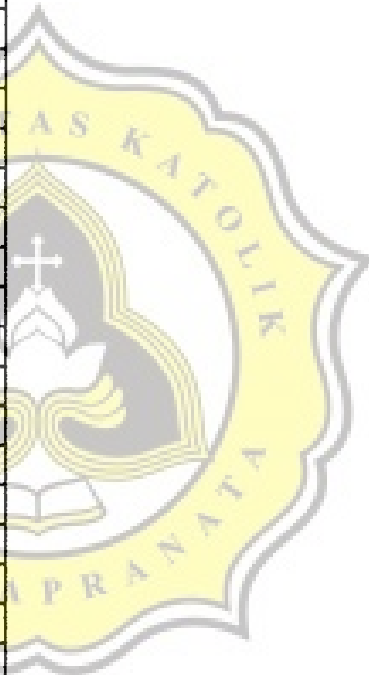


EMPATI

| No. | X01 | X02 | X03 | X04 | X05 | X06 | X07 | X08 | X09 | X10 | X11 | X12 | X13 | X14 | X15 | X16 | X17 |
|-----|-----|-----|-----|-----|-----|-----|-----|-----|-----|-----|-----|-----|-----|-----|-----|-----|-----|
| 1 | 3 | 3 | 3 | 3 | 3 | 3 | 3 | 3 | 3 | 3 | 3 | 3 | 3 | 3 | 3 | 3 | 3 |
| 2 | 3 | 3 | 4 | 2 | 4 | 3 | 4 | 3 | 4 | 3 | 4 | 4 | 3 | 4 | 4 | 3 | 4 |
| 3 | 3 | 4 | 3 | 2 | 4 | 3 | 3 | 4 | 3 | 2 | 3 | 2 | 3 | 3 | 2 | 3 | 2 |
| 4 | 3 | 3 | 3 | 3 | 3 | 3 | 4 | 2 | 2 | 3 | 3 | 2 | 2 | 3 | 4 | 2 | 3 |
| 5 | 3 | 4 | 3 | 4 | 4 | 4 | 4 | 3 | 4 | 4 | 4 | 4 | 4 | 4 | 4 | 4 | 4 |
| 6 | 3 | 4 | 3 | 2 | 3 | 3 | 2 | 3 | 3 | 3 | 3 | 3 | 4 | 3 | 4 | 4 | 2 |
| 7 | 2 | 3 | 3 | 2 | 3 | 3 | 3 | 3 | 3 | 3 | 4 | 3 | 3 | 3 | 3 | 3 | 3 |
| 8 | 3 | 3 | 4 | 3 | 3 | 3 | 3 | 4 | 3 | 3 | 3 | 2 | 3 | 2 | 3 | 3 | 2 |
| 9 | 4 | 1 | 4 | 4 | 1 | 4 | 4 | 4 | 4 | 4 | 4 | 4 | 4 | 4 | 4 | 4 | 4 |
| 10 | 4 | 4 | 4 | 4 | 4 | 4 | 4 | 4 | 4 | 4 | 4 | 4 | 4 | 4 | 4 | 1 | 4 |
| 11 | 3 | 3 | 2 | 2 | 3 | 4 | 4 | 4 | 4 | 4 | 3 | 3 | 3 | 3 | 3 | 4 | 4 |
| 12 | 3 | 3 | 3 | 3 | 3 | 3 | 4 | 3 | 3 | 3 | 3 | 3 | 3 | 3 | 3 | 3 | 3 |
| 13 | 3 | 3 | 3 | 3 | 3 | 3 | 3 | 3 | 2 | 3 | 3 | 3 | 3 | 3 | 4 | 2 | 3 |
| 14 | 3 | 1 | 2 | 4 | 4 | 4 | 3 | 3 | 3 | 4 | 3 | 4 | 3 | 4 | 1 | 4 | 2 |
| 15 | 4 | 4 | 3 | 4 | 4 | 4 | 4 | 4 | 4 | 4 | 4 | 2 | 4 | 4 | 4 | 3 | 4 |
| 16 | 3 | 4 | 4 | 3 | 3 | 3 | 3 | 4 | 4 | 3 | 3 | 4 | 4 | 3 | 3 | 2 | 4 |
| 17 | 3 | 4 | 3 | 3 | 4 | 4 | 4 | 3 | 3 | 3 | 4 | 4 | 3 | 4 | 4 | 3 | 3 |
| 18 | 3 | 2 | 3 | 4 | 4 | 2 | 3 | 2 | 2 | 2 | 2 | 3 | 3 | 3 | 3 | 3 | 3 |
| 19 | 3 | 3 | 2 | 2 | 3 | 4 | 4 | 3 | 3 | 3 | 4 | 2 | 2 | 3 | 3 | 4 | 3 |
| 20 | 3 | 2 | 3 | 4 | 2 | 2 | 4 | 4 | 4 | 4 | 3 | 3 | 3 | 3 | 3 | 4 | 4 |
| 21 | 3 | 3 | 3 | 3 | 3 | 3 | 3 | 4 | 4 | 4 | 4 | 3 | 4 | 4 | 3 | 3 | 3 |
| 22 | 3 | 4 | 4 | 4 | 1 | 4 | 4 | 4 | 4 | 4 | 3 | 2 | 4 | 4 | 4 | 4 | 2 |
| 23 | 4 | 3 | 4 | 3 | 4 | 4 | 4 | 4 | 4 | 4 | 3 | 4 | 4 | 4 | 4 | 3 | 3 |
| 24 | 2 | 3 | 3 | 3 | 2 | 3 | 4 | 3 | 4 | 3 | 3 | 2 | 3 | 3 | 4 | 4 | 3 |
| 25 | 2 | 3 | 2 | 1 | 2 | 1 | 3 | 4 | 2 | 2 | 3 | 3 | 1 | 3 | 3 | 2 | 2 |
| 26 | 3 | 1 | 1 | 1 | 3 | 1 | 2 | 4 | 1 | 4 | 3 | 1 | 1 | 1 | 2 | 4 | 2 |
| 27 | 3 | 3 | 3 | 3 | 3 | 3 | 3 | 3 | 3 | 3 | 3 | 3 | 3 | 3 | 2 | 2 | 3 |
| 28 | 3 | 4 | 3 | 4 | 2 | 3 | 4 | 4 | 2 | 3 | 4 | 4 | 4 | 3 | 3 | 3 | 3 |
| 29 | 3 | 3 | 3 | 3 | 3 | 3 | 4 | 3 | 4 | 4 | 4 | 3 | 3 | 3 | 3 | 4 | 4 |
| 30 | 4 | 3 | 4 | 4 | 3 | 3 | 2 | 3 | 3 | 3 | 4 | 2 | 4 | 2 | 3 | 3 | 3 |
| 31 | 3 | 4 | 3 | 2 | 3 | 3 | 3 | 2 | 3 | 2 | 2 | 3 | 3 | 3 | 3 | 3 | 3 |
| 32 | 4 | 3 | 4 | 2 | 4 | 4 | 4 | 4 | 4 | 3 | 3 | 3 | 2 | 3 | 3 | 2 | 4 |
| 33 | 1 | 2 | 3 | 4 | 3 | 4 | 4 | 2 | 3 | 3 | 3 | 4 | 3 | 3 | 4 | 3 | 2 |
| 34 | 3 | 3 | 2 | 3 | 3 | 4 | 4 | 3 | 2 | 3 | 4 | 2 | 3 | 3 | 3 | 3 | 4 |
| 35 | 4 | 4 | 3 | 3 | 3 | 4 | 3 | 3 | 3 | 4 | 4 | 3 | 4 | 2 | 3 | 3 | 4 |
| 36 | 3 | 3 | 4 | 3 | 4 | 4 | 3 | 4 | 3 | 4 | 3 | 4 | 3 | 2 | 3 | 3 | 4 |
| 37 | 2 | 4 | 4 | 4 | 3 | 3 | 3 | 4 | 3 | 3 | 3 | 3 | 4 | 3 | 4 | 4 | 3 |
| 38 | 3 | 4 | 4 | 3 | 4 | 4 | 4 | 4 | 4 | 2 | 4 | 2 | 3 | 2 | 4 | 4 | 4 |
| 39 | 3 | 4 | 2 | 4 | 3 | 3 | 4 | 3 | 3 | 4 | 3 | 3 | 4 | 4 | 3 | 3 | 4 |
| 40 | 3 | 3 | 1 | 2 | 3 | 3 | 3 | 3 | 3 | 3 | 3 | 2 | 2 | 3 | 3 | 3 | 3 |

EMPATI

| No. | X18 | X19 | X20 | X21 | X22 | X23 | X24 | EMP |
|-----|-----|-----|-----|-----|-----|-----|-----|-----|
| 1 | 2 | 3 | 3 | 3 | 3 | 3 | 2 | 70 |
| 2 | 1 | 3 | 3 | 3 | 3 | 4 | 4 | 80 |
| 3 | 2 | 2 | 3 | 4 | 4 | 2 | 2 | 68 |
| 4 | 3 | 2 | 3 | 3 | 3 | 2 | 3 | 67 |
| 5 | 3 | 3 | 3 | 3 | 4 | 4 | 2 | 87 |
| 6 | 3 | 3 | 3 | 4 | 2 | 4 | 3 | 74 |
| 7 | 2 | 2 | 3 | 3 | 3 | 3 | 3 | 69 |
| 8 | 3 | 3 | 3 | 3 | 3 | 3 | 2 | 70 |
| 9 | 4 | 1 | 4 | 4 | 4 | 4 | 1 | 84 |
| 10 | 4 | 1 | 4 | 4 | 4 | 4 | 4 | 90 |
| 11 | 4 | 3 | 3 | 3 | 4 | 3 | 3 | 79 |
| 12 | 2 | 3 | 3 | 3 | 3 | 3 | 3 | 72 |
| 13 | 3 | 3 | 3 | 3 | 3 | 3 | 3 | 71 |
| 14 | 3 | 2 | 3 | 1 | 3 | 4 | 3 | 71 |
| 15 | 1 | 4 | 4 | 4 | 4 | 2 | 4 | 87 |
| 16 | 2 | 2 | 3 | 3 | 3 | 4 | 4 | 78 |
| 17 | 2 | 4 | 4 | 3 | 3 | 4 | 3 | 82 |
| 18 | 3 | 2 | 3 | 3 | 4 | 3 | 3 | 68 |
| 19 | 1 | 3 | 3 | 4 | 3 | 2 | 2 | 69 |
| 20 | 4 | 2 | 4 | 3 | 2 | 3 | 3 | 76 |
| 21 | 4 | 2 | 3 | 4 | 3 | 3 | 4 | 80 |
| 22 | 2 | 3 | 4 | 4 | 4 | 2 | 4 | 82 |
| 23 | 3 | 4 | 3 | 4 | 4 | 4 | 4 | 89 |
| 24 | 2 | 2 | 3 | 4 | 3 | 2 | 3 | 71 |
| 25 | 1 | 3 | 1 | 3 | 1 | 3 | 1 | 52 |
| 26 | 1 | 2 | 4 | 2 | 1 | 1 | 1 | 47 |
| 27 | 3 | 2 | 3 | 3 | 3 | 3 | 3 | 69 |
| 28 | 3 | 3 | 3 | 4 | 4 | 4 | 4 | 81 |
| 29 | 4 | 4 | 3 | 3 | 4 | 3 | 3 | 81 |
| 30 | 2 | 3 | 4 | 4 | 2 | 2 | 4 | 74 |
| 31 | 3 | 2 | 3 | 3 | 3 | 3 | 3 | 68 |
| 32 | 4 | 4 | 3 | 3 | 3 | 3 | 2 | 78 |
| 33 | 4 | 3 | 2 | 3 | 4 | 4 | 3 | 74 |
| 34 | 1 | 3 | 2 | 3 | 3 | 2 | 3 | 69 |
| 35 | 3 | 2 | 3 | 3 | 4 | 3 | 4 | 79 |
| 36 | 2 | 3 | 4 | 4 | 3 | 4 | 3 | 80 |
| 37 | 3 | 2 | 3 | 4 | 3 | 3 | 4 | 79 |
| 38 | 3 | 3 | 4 | 4 | 4 | 2 | 3 | 82 |
| 39 | 4 | 4 | 3 | 4 | 3 | 3 | 4 | 82 |
| 40 | 2 | 3 | 3 | 3 | 3 | 3 | 3 | 66 |





LAMPIRAN A - 2

Data Uji Coba
PERILAKU PROSOSIAL



PERILAKU PROSOSIAL

| No. | X01 | X02 | X03 | X04 | X05 | X06 | X07 | X08 | X09 | X10 | X11 | X12 | X13 | X14 | X15 | X16 | X17 |
|-----|-----|-----|-----|-----|-----|-----|-----|-----|-----|-----|-----|-----|-----|-----|-----|-----|-----|
| 1 | 3 | 3 | 3 | 3 | 3 | 3 | 3 | 3 | 3 | 3 | 3 | 3 | 2 | 3 | 3 | 3 | 3 |
| 2 | 4 | 4 | 4 | 4 | 4 | 4 | 4 | 4 | 4 | 4 | 4 | 4 | 4 | 4 | 4 | 4 | 4 |
| 3 | 3 | 3 | 4 | 2 | 4 | 2 | 3 | 3 | 4 | 4 | 4 | 3 | 1 | 4 | 3 | 4 | 3 |
| 4 | 4 | 3 | 2 | 3 | 4 | 3 | 2 | 3 | 2 | 1 | 4 | 2 | 3 | 3 | 4 | 3 | 4 |
| 5 | 4 | 4 | 4 | 4 | 4 | 4 | 4 | 4 | 4 | 4 | 4 | 3 | 2 | 4 | 3 | 4 | 4 |
| 6 | 1 | 2 | 3 | 2 | 4 | 4 | 4 | 2 | 3 | 3 | 3 | 4 | 3 | 4 | 2 | 3 | 3 |
| 7 | 3 | 4 | 3 | 3 | 4 | 3 | 3 | 4 | 3 | 3 | 3 | 3 | 2 | 4 | 3 | 3 | 4 |
| 8 | 4 | 4 | 3 | 4 | 4 | 4 | 4 | 4 | 3 | 4 | 4 | 4 | 2 | 4 | 3 | 3 | 2 |
| 9 | 4 | 4 | 4 | 4 | 4 | 4 | 4 | 4 | 4 | 4 | 1 | 3 | 1 | 4 | 4 | 4 | 4 |
| 10 | 4 | 4 | 4 | 4 | 3 | 3 | 4 | 4 | 4 | 4 | 4 | 3 | 4 | 4 | 4 | 4 | 4 |
| 11 | 4 | 3 | 3 | 3 | 4 | 4 | 4 | 3 | 3 | 3 | 3 | 4 | 4 | 4 | 3 | 3 | 4 |
| 12 | 3 | 3 | 3 | 4 | 4 | 3 | 3 | 3 | 3 | 3 | 3 | 3 | 2 | 4 | 3 | 3 | 3 |
| 13 | 3 | 4 | 4 | 4 | 3 | 3 | 3 | 4 | 4 | 3 | 3 | 3 | 3 | 3 | 4 | 3 | 4 |
| 14 | 4 | 3 | 2 | 4 | 2 | 2 | 3 | 4 | 2 | 2 | 3 | 3 | 4 | 3 | 3 | 4 | 4 |
| 15 | 4 | 3 | 4 | 4 | 4 | 4 | 4 | 1 | 4 | 4 | 4 | 4 | 4 | 4 | 4 | 1 | 4 |
| 16 | 4 | 4 | 4 | 4 | 3 | 4 | 3 | 4 | 4 | 3 | 4 | 3 | 4 | 4 | 3 | 4 | 3 |
| 17 | 4 | 4 | 3 | 4 | 4 | 4 | 4 | 4 | 3 | 4 | 4 | 4 | 2 | 4 | 4 | 4 | 4 |
| 18 | 3 | 4 | 4 | 3 | 3 | 3 | 4 | 4 | 4 | 4 | 3 | 4 | 4 | 3 | 4 | 2 | 3 |
| 19 | 3 | 4 | 3 | 4 | 4 | 4 | 4 | 4 | 3 | 3 | 3 | 4 | 2 | 4 | 4 | 3 | 4 |
| 20 | 3 | 4 | 4 | 3 | 3 | 3 | 3 | 4 | 4 | 3 | 4 | 3 | 4 | 4 | 3 | 4 | 3 |
| 21 | 4 | 4 | 4 | 4 | 4 | 4 | 3 | 4 | 4 | 4 | 4 | 3 | 3 | 4 | 4 | 4 | 4 |
| 22 | 3 | 2 | 3 | 3 | 4 | 3 | 3 | 2 | 3 | 3 | 3 | 3 | 3 | 3 | 3 | 4 | 3 |
| 23 | 4 | 4 | 4 | 4 | 4 | 4 | 4 | 4 | 4 | 4 | 4 | 2 | 4 | 4 | 4 | 3 | 4 |
| 24 | 4 | 4 | 4 | 4 | 4 | 4 | 1 | 4 | 1 | 3 | 4 | 3 | 3 | 4 | 3 | 4 | 3 |
| 25 | 4 | 4 | 4 | 2 | 3 | 2 | 1 | 2 | 1 | 3 | 1 | 1 | 3 | 4 | 1 | 3 | 1 |
| 26 | 3 | 4 | 3 | 3 | 3 | 3 | 3 | 3 | 3 | 3 | 4 | 4 | 2 | 3 | 3 | 4 | 3 |
| 27 | 4 | 3 | 3 | 4 | 4 | 3 | 2 | 4 | 3 | 3 | 3 | 3 | 2 | 4 | 3 | 4 | 4 |
| 28 | 3 | 4 | 4 | 4 | 4 | 3 | 3 | 3 | 3 | 4 | 3 | 4 | 3 | 3 | 4 | 3 | 4 |
| 29 | 3 | 4 | 4 | 2 | 2 | 4 | 3 | 2 | 3 | 4 | 3 | 4 | 4 | 4 | 4 | 3 | 4 |
| 30 | 4 | 3 | 3 | 4 | 3 | 3 | 4 | 4 | 3 | 3 | 4 | 3 | 3 | 4 | 3 | 3 | 4 |
| 31 | 3 | 3 | 4 | 4 | 4 | 4 | 4 | 4 | 4 | 3 | 4 | 4 | 4 | 3 | 3 | 4 | 4 |
| 32 | 3 | 3 | 3 | 3 | 3 | 3 | 3 | 3 | 3 | 3 | 3 | 3 | 3 | 3 | 3 | 3 | 3 |
| 33 | 4 | 4 | 4 | 4 | 4 | 3 | 4 | 4 | 3 | 2 | 3 | 3 | 3 | 3 | 2 | 3 | 4 |
| 34 | 4 | 2 | 4 | 4 | 4 | 3 | 1 | 2 | 3 | 3 | 2 | 4 | 4 | 4 | 3 | 4 | 3 |
| 35 | 3 | 3 | 3 | 4 | 3 | 3 | 4 | 4 | 3 | 4 | 3 | 3 | 3 | 3 | 4 | 3 | 3 |
| 36 | 3 | 3 | 3 | 2 | 3 | 3 | 3 | 3 | 1 | 2 | 2 | 3 | 4 | 3 | 2 | 3 | 4 |
| 37 | 2 | 3 | 4 | 2 | 2 | 2 | 2 | 1 | 1 | 1 | 1 | 4 | 1 | 2 | 1 | 4 | 4 |
| 38 | 3 | 3 | 3 | 4 | 3 | 3 | 3 | 4 | 3 | 3 | 4 | 3 | 3 | 3 | 3 | 3 | 4 |
| 39 | 3 | 3 | 3 | 3 | 3 | 4 | 3 | 3 | 4 | 4 | 4 | 3 | 4 | 3 | 4 | 3 | 4 |
| 40 | 3 | 3 | 2 | 3 | 3 | 4 | 4 | 4 | 3 | 3 | 3 | 3 | 2 | 3 | 3 | 3 | 3 |

PERILAKU PROSOSIAL

| No. | X18 | X19 | X20 | X21 | X22 | X23 | X24 | X25 | X26 | X27 | X28 | X29 | X30 | X31 | X32 | X33 | X34 |
|-----|-----|-----|-----|-----|-----|-----|-----|-----|-----|-----|-----|-----|-----|-----|-----|-----|-----|
| 1 | 3 | 2 | 3 | 3 | 3 | 3 | 3 | 3 | 3 | 3 | 3 | 3 | 3 | 3 | 3 | 3 | 3 |
| 2 | 4 | 3 | 4 | 4 | 4 | 3 | 3 | 3 | 4 | 4 | 3 | 3 | 3 | 3 | 4 | 4 | 4 |
| 3 | 3 | 2 | 4 | 4 | 4 | 1 | 4 | 4 | 3 | 3 | 3 | 2 | 3 | 4 | 4 | 4 | 3 |
| 4 | 3 | 3 | 3 | 3 | 3 | 3 | 3 | 3 | 3 | 3 | 3 | 4 | 3 | 4 | 3 | 4 | 3 |
| 5 | 4 | 1 | 4 | 4 | 4 | 4 | 3 | 3 | 4 | 3 | 3 | 2 | 4 | 4 | 4 | 4 | 3 |
| 6 | 4 | 3 | 4 | 2 | 2 | 4 | 3 | 2 | 3 | 4 | 2 | 3 | 3 | 2 | 3 | 4 | 4 |
| 7 | 4 | 3 | 3 | 4 | 3 | 2 | 4 | 3 | 3 | 3 | 3 | 3 | 3 | 4 | 3 | 3 | 3 |
| 8 | 4 | 2 | 4 | 4 | 3 | 3 | 4 | 2 | 2 | 3 | 3 | 2 | 2 | 1 | 4 | 4 | 3 |
| 9 | 4 | 1 | 4 | 4 | 4 | 4 | 4 | 4 | 3 | 4 | 4 | 4 | 4 | 1 | 4 | 4 | 4 |
| 10 | 4 | 4 | 4 | 4 | 3 | 4 | 4 | 3 | 4 | 3 | 4 | 3 | 4 | 4 | 4 | 4 | 3 |
| 11 | 4 | 4 | 4 | 3 | 3 | 3 | 3 | 3 | 3 | 4 | 4 | 4 | 4 | 4 | 4 | 4 | 4 |
| 12 | 4 | 2 | 3 | 4 | 3 | 3 | 3 | 3 | 3 | 3 | 3 | 3 | 3 | 3 | 4 | 4 | 3 |
| 13 | 4 | 3 | 3 | 4 | 3 | 3 | 3 | 3 | 3 | 3 | 3 | 3 | 4 | 3 | 3 | 3 | 3 |
| 14 | 4 | 4 | 4 | 3 | 3 | 3 | 3 | 3 | 3 | 4 | 4 | 4 | 4 | 3 | 3 | 3 | 4 |
| 15 | 4 | 1 | 4 | 4 | 3 | 1 | 4 | 4 | 4 | 3 | 4 | 4 | 4 | 3 | 2 | 4 | 3 |
| 16 | 4 | 2 | 3 | 4 | 3 | 2 | 4 | 3 | 3 | 1 | 4 | 3 | 4 | 4 | 3 | 4 | 1 |
| 17 | 4 | 2 | 4 | 4 | 4 | 2 | 4 | 4 | 4 | 4 | 3 | 4 | 4 | 4 | 4 | 4 | 4 |
| 18 | 4 | 4 | 2 | 3 | 4 | 4 | 2 | 3 | 4 | 3 | 3 | 3 | 4 | 3 | 4 | 3 | 3 |
| 19 | 4 | 2 | 3 | 4 | 4 | 2 | 3 | 3 | 3 | 3 | 3 | 2 | 4 | 3 | 3 | 4 | 3 |
| 20 | 4 | 3 | 4 | 2 | 3 | 4 | 3 | 4 | 4 | 3 | 3 | 3 | 4 | 3 | 2 | 3 | 3 |
| 21 | 4 | 2 | 3 | 4 | 4 | 4 | 3 | 4 | 4 | 3 | 3 | 4 | 4 | 4 | 4 | 4 | 3 |
| 22 | 3 | 2 | 3 | 4 | 3 | 3 | 3 | 3 | 4 | 3 | 4 | 2 | 4 | 3 | 4 | 4 | 3 |
| 23 | 4 | 4 | 4 | 4 | 4 | 4 | 4 | 4 | 4 | 4 | 4 | 4 | 4 | 4 | 4 | 4 | 4 |
| 24 | 4 | 2 | 3 | 4 | 3 | 3 | 4 | 3 | 4 | 3 | 4 | 4 | 4 | 3 | 4 | 4 | 3 |
| 25 | 4 | 1 | 4 | 3 | 3 | 1 | 2 | 2 | 4 | 2 | 4 | 4 | 3 | 1 | 3 | 3 | 2 |
| 26 | 3 | 2 | 3 | 4 | 3 | 3 | 2 | 3 | 3 | 4 | 4 | 1 | 3 | 3 | 4 | 3 | 4 |
| 27 | 4 | 3 | 4 | 4 | 2 | 4 | 3 | 3 | 3 | 3 | 4 | 3 | 3 | 3 | 3 | 4 | 3 |
| 28 | 4 | 4 | 4 | 4 | 3 | 3 | 3 | 3 | 3 | 4 | 3 | 4 | 4 | 4 | 4 | 3 | 4 |
| 29 | 3 | 4 | 4 | 3 | 4 | 3 | 4 | 3 | 3 | 3 | 2 | 3 | 3 | 4 | 2 | 3 | 3 |
| 30 | 4 | 2 | 3 | 3 | 3 | 3 | 4 | 4 | 4 | 4 | 4 | 4 | 2 | 4 | 4 | 4 | 4 |
| 31 | 2 | 3 | 4 | 3 | 4 | 4 | 4 | 3 | 4 | 3 | 3 | 4 | 4 | 3 | 3 | 3 | 3 |
| 32 | 3 | 3 | 3 | 3 | 3 | 3 | 3 | 3 | 3 | 3 | 3 | 3 | 3 | 3 | 3 | 3 | 3 |
| 33 | 3 | 4 | 2 | 4 | 3 | 4 | 4 | 4 | 3 | 4 | 3 | 4 | 3 | 2 | 4 | 3 | 4 |
| 34 | 2 | 4 | 3 | 1 | 3 | 1 | 3 | 3 | 2 | 3 | 2 | 3 | 3 | 3 | 3 | 3 | 3 |
| 35 | 4 | 3 | 2 | 3 | 3 | 2 | 3 | 4 | 4 | 4 | 4 | 4 | 4 | 4 | 4 | 4 | 4 |
| 36 | 2 | 3 | 2 | 3 | 4 | 3 | 4 | 4 | 3 | 4 | 2 | 3 | 3 | 2 | 2 | 3 | 4 |
| 37 | 3 | 1 | 4 | 3 | 3 | 2 | 2 | 1 | 2 | 1 | 3 | 1 | 4 | 2 | 3 | 3 | 1 |
| 38 | 3 | 3 | 2 | 3 | 3 | 3 | 3 | 3 | 3 | 3 | 3 | 3 | 3 | 3 | 3 | 3 | 3 |
| 39 | 3 | 4 | 3 | 4 | 3 | 3 | 3 | 3 | 3 | 4 | 4 | 3 | 4 | 4 | 4 | 4 | 4 |
| 40 | 3 | 2 | 3 | 3 | 3 | 1 | 3 | 3 | 4 | 3 | 4 | 2 | 3 | 3 | 3 | 4 | 3 |

PERILAKU PROSOSIAL

| No. | X35 | X36 | X37 | X38 | X39 | X40 | PP |
|-----|-----|-----|-----|-----|-----|-----|-----|
| 1 | 3 | 3 | 3 | 4 | 3 | 3 | 119 |
| 2 | 4 | 3 | 4 | 3 | 4 | 4 | 150 |
| 3 | 3 | 2 | 3 | 3 | 4 | 3 | 127 |
| 4 | 3 | 4 | 4 | 4 | 4 | 3 | 126 |
| 5 | 3 | 4 | 4 | 4 | 4 | 4 | 145 |
| 6 | 2 | 3 | 3 | 4 | 4 | 2 | 120 |
| 7 | 3 | 3 | 3 | 4 | 4 | 3 | 129 |
| 8 | 3 | 2 | 2 | 3 | 3 | 3 | 126 |
| 9 | 4 | 4 | 4 | 4 | 4 | 4 | 146 |
| 10 | 4 | 3 | 4 | 4 | 4 | 4 | 151 |
| 11 | 4 | 4 | 4 | 4 | 4 | 4 | 145 |
| 12 | 3 | 3 | 3 | 3 | 3 | 3 | 125 |
| 13 | 3 | 3 | 4 | 4 | 3 | 3 | 132 |
| 14 | 4 | 4 | 4 | 3 | 4 | 3 | 133 |
| 15 | 4 | 4 | 4 | 4 | 4 | 4 | 141 |
| 16 | 4 | 3 | 4 | 3 | 4 | 3 | 135 |
| 17 | 3 | 4 | 4 | 3 | 3 | 4 | 148 |
| 18 | 3 | 3 | 4 | 4 | 4 | 4 | 137 |
| 19 | 3 | 2 | 4 | 3 | 4 | 3 | 132 |
| 20 | 3 | 3 | 4 | 3 | 4 | 4 | 135 |
| 21 | 3 | 4 | 4 | 4 | 4 | 4 | 149 |
| 22 | 4 | 2 | 4 | 3 | 3 | 3 | 125 |
| 23 | 4 | 4 | 4 | 4 | 4 | 4 | 157 |
| 24 | 4 | 4 | 4 | 4 | 4 | 4 | 140 |
| 25 | 4 | 4 | 3 | 3 | 3 | 3 | 106 |
| 26 | 4 | 1 | 3 | 4 | 3 | 4 | 125 |
| 27 | 4 | 3 | 3 | 3 | 3 | 4 | 132 |
| 28 | 3 | 4 | 4 | 4 | 4 | 4 | 143 |
| 29 | 2 | 3 | 3 | 3 | 2 | 3 | 127 |
| 30 | 4 | 4 | 2 | 4 | 4 | 4 | 140 |
| 31 | 3 | 4 | 4 | 4 | 4 | 4 | 143 |
| 32 | 3 | 3 | 3 | 3 | 3 | 3 | 120 |
| 33 | 3 | 4 | 3 | 3 | 3 | 3 | 134 |
| 34 | 2 | 3 | 3 | 3 | 2 | 3 | 115 |
| 35 | 4 | 4 | 4 | 4 | 3 | 3 | 138 |
| 36 | 2 | 3 | 3 | 4 | 4 | 3 | 117 |
| 37 | 3 | 1 | 4 | 4 | 4 | 3 | 95 |
| 38 | 3 | 3 | 3 | 3 | 3 | 3 | 123 |
| 39 | 4 | 3 | 4 | 3 | 3 | 3 | 138 |
| 40 | 4 | 2 | 3 | 4 | 3 | 3 | 121 |



LAMPIRAN B

Uji Validitas dan Reabilitas



LAMPIRAN B – 1

Uji Validitas dan Reliabilitas EMPATI



R E L I A B I L I T Y A N A L Y S I S - S C A L E (A L P H A)

Item-total Statistics Empati (1)

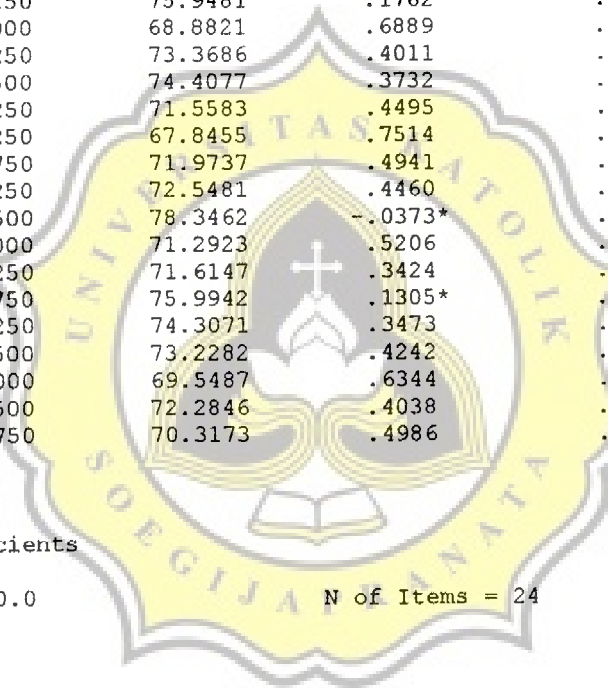
| | Scale Mean if Item Deleted | Scale Variance if Item Deleted | Corrected Item- Total Correlation | Alpha if Item Deleted |
|-----|-------------------------------------|-----------------------------------------|--------------------------------------------|-----------------------------|
| X01 | 71.8500 | 74.3359 | .3463 | .8555 |
| X02 | 71.7500 | 72.8590 | .3319 | .8566 |
| X03 | 71.8250 | 70.4558 | .5336 | .8492 |
| X04 | 71.8750 | 69.6506 | .5465 | .8485 |
| X05 | 71.7750 | 76.4353 | .1014* | .8637 |
| X06 | 71.6250 | 69.2147 | .6660 | .8447 |
| X07 | 71.4250 | 72.7122 | .4867 | .8516 |
| X08 | 71.5250 | 75.9481 | .1762* | .8603 |
| X09 | 71.7000 | 68.8821 | .6889 | .8439 |
| X10 | 71.6250 | 73.3686 | .4011 | .8539 |
| X11 | 71.5500 | 74.4077 | .3732 | .8549 |
| X12 | 71.9250 | 71.5583 | .4495 | .8522 |
| X13 | 71.7250 | 67.8455 | .7514 | .8413 |
| X14 | 71.7750 | 71.9737 | .4941 | .8510 |
| X15 | 71.6250 | 72.5481 | .4460 | .8525 |
| X16 | 71.7500 | 78.3462 | -.0373* | .8677 |
| X17 | 71.7000 | 71.2923 | .5206 | .8499 |
| X18 | 72.2250 | 71.6147 | .3424 | .8573 |
| X19 | 72.1750 | 75.9942 | .1305* | .8630 |
| X20 | 71.7250 | 74.3071 | .3473 | .8555 |
| X21 | 71.5500 | 73.2282 | .4242 | .8533 |
| X22 | 71.7000 | 69.5487 | .6344 | .8458 |
| X23 | 71.8500 | 72.2846 | .4038 | .8538 |
| X24 | 71.8750 | 70.3173 | .4986 | .8504 |

Reliability Coefficients

N of Cases = 40.0

N of Items = 24

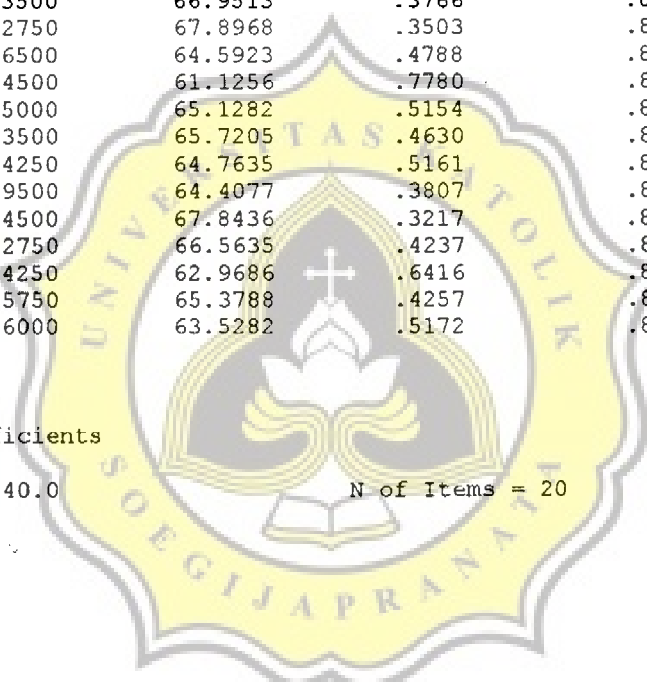
Alpha = .8586



RELIABILITY ANALYSIS - SCALE (ALPHA)

Item-total Statistics Empati (2)

| | Scale Mean if Item Deleted | Scale Variance if Item Deleted | Corrected Item-Total Correlation | Alpha if Item Deleted |
|-----|----------------------------|--------------------------------|----------------------------------|-----------------------|
| X01 | 59.5750 | 67.7891 | .3288 | .8802 |
| X02 | 59.4750 | 66.4096 | .3159 | .8820 |
| X03 | 59.5500 | 63.6385 | .5557 | .8734 |
| X04 | 59.6000 | 62.6051 | .5875 | .8721 |
| X06 | 59.3500 | 63.0026 | .6430 | .8705 |
| X07 | 59.1500 | 66.1308 | .4805 | .8761 |
| X09 | 59.4250 | 62.7122 | .6636 | .8697 |
| X10 | 59.3500 | 66.9513 | .3766 | .8790 |
| X11 | 59.2750 | 67.8968 | .3503 | .8796 |
| X12 | 59.6500 | 64.5923 | .4788 | .8760 |
| X13 | 59.4500 | 61.1256 | .7780 | .8655 |
| X14 | 59.5000 | 65.1282 | .5154 | .8749 |
| X15 | 59.3500 | 65.7205 | .4630 | .8765 |
| X17 | 59.4250 | 64.7635 | .5161 | .8748 |
| X18 | 59.9500 | 64.4077 | .3807 | .8811 |
| X20 | 59.4500 | 67.8436 | .3217 | .8803 |
| X21 | 59.2750 | 66.5635 | .4237 | .8777 |
| X22 | 59.4250 | 62.9686 | .6416 | .8705 |
| X23 | 59.5750 | 65.3788 | .4257 | .8778 |
| X24 | 59.6000 | 63.5282 | .5172 | .8748 |



Reliability Coefficients

N of Cases = 40.0 N of Items = 20

Alpha = .8812

LAMPIRAN B – 2

Uji Validitas dan Reabilitas PERILAKU PROSOSIAL



RELIABILITY ANALYSIS - SCALE (ALPHA)

Item-total Statistics Perilaku Prosocial (1)

| | Scale Mean if Item Deleted | Scale Variance if Item Deleted | Corrected Item- Total Correlation | Alpha if Item Deleted |
|-----|-------------------------------------|-----------------------------------------|--------------------------------------------|-----------------------------|
| X01 | 128.8500 | 157.3103 | .4577 | .8925 |
| X02 | 128.8250 | 158.7635 | .3935 | .8935 |
| X03 | 128.8250 | 161.7891 | .2028* | .8959 |
| X04 | 128.8250 | 153.8404 | .5975 | .8902 |
| X05 | 128.7750 | 159.2045 | .3628 | .8939 |
| X06 | 128.9250 | 156.5327 | .5187 | .8917 |
| X07 | 129.0500 | 153.8949 | .4930 | .8918 |
| X08 | 128.9000 | 152.9641 | .5303 | .8911 |
| X09 | 129.1500 | 151.8231 | .5789 | .8901 |
| X10 | 129.0500 | 153.8436 | .5609 | .8907 |
| X11 | 129.0000 | 153.3846 | .5261 | .8912 |
| X12 | 129.0000 | 164.4103 | .0358* | .8983 |
| X13 | 129.3000 | 158.6769 | .2431* | .8967 |
| X14 | 128.7000 | 159.8051 | .3841 | .8937 |
| X15 | 129.0500 | 151.5359 | .6836 | .8886 |
| X16 | 128.9000 | 164.7077 | .0193* | .8985 |
| X17 | 128.7250 | 157.6917 | .4294 | .8929 |
| X18 | 128.7000 | 158.1641 | .4298 | .8930 |
| X19 | 129.5750 | 160.2506 | .1675* | .8985 |
| X20 | 128.9000 | 162.4000 | .1449* | .8970 |
| X21 | 128.8000 | 157.5487 | .4135 | .8931 |
| X22 | 129.0000 | 160.4615 | .3429 | .8942 |
| X23 | 129.3750 | 155.4712 | .3766 | .8941 |
| X24 | 128.9750 | 158.5378 | .4050 | .8933 |
| X25 | 129.1000 | 155.8359 | .5565 | .8912 |
| X26 | 128.9250 | 157.0968 | .5184 | .8919 |
| X27 | 129.0250 | 156.8968 | .4376 | .8928 |
| X28 | 128.9500 | 160.4077 | .2829* | .8949 |
| X29 | 129.1250 | 155.3429 | .4423 | .8927 |
| X30 | 128.7750 | 159.2045 | .3913 | .8935 |
| X31 | 129.1250 | 155.2404 | .4299 | .8929 |
| X32 | 128.8500 | 158.0795 | .4110 | .8932 |
| X33 | 128.6750 | 159.8147 | .4273 | .8933 |
| X34 | 129.0250 | 156.8968 | .4376 | .8928 |
| X35 | 128.9250 | 159.5071 | .3342 | .8942 |
| X36 | 129.0750 | 154.0199 | .5128 | .8914 |
| X37 | 128.7250 | 158.6147 | .4312 | .8930 |
| X38 | 128.7000 | 163.1897 | .1578* | .8961 |
| X39 | 128.7250 | 159.8455 | .3482 | .8941 |
| X40 | 128.8500 | 155.9769 | .6754 | .8904 |

Reliability Coefficients

N of Cases = 40.0

N of Items = 40

Alpha = .8957

RELIABILITY ANALYSIS - SCALE (ALPHA)

Item-total Statistics Perilaku Prosocial (2)

| | Scale Mean if Item Deleted | Scale Variance if Item Deleted | Corrected Item-Total Correlation | Alpha if Item Deleted |
|-----|----------------------------|--------------------------------|----------------------------------|-----------------------|
| X01 | 103.0000 | 130.7179 | .4640 | .9058 |
| X02 | 102.9750 | 132.0250 | .4015 | .9067 |
| X04 | 102.9750 | 127.4096 | .6124 | .9033 |
| X05 | 102.9250 | 131.9686 | .4025 | .9067 |
| X06 | 103.0750 | 130.0712 | .5211 | .9050 |
| X07 | 103.2000 | 127.2923 | .5133 | .9050 |
| X08 | 103.0500 | 126.1513 | .5657 | .9040 |
| X09 | 103.3000 | 126.0615 | .5653 | .9040 |
| X10 | 103.2000 | 127.7026 | .5577 | .9042 |
| X11 | 103.1500 | 127.1564 | .5294 | .9047 |
| X14 | 102.8500 | 133.0026 | .3916 | .9068 |
| X15 | 103.2000 | 125.4462 | .6900 | .9019 |
| X17 | 102.8750 | 131.4968 | .4072 | .9066 |
| X18 | 102.8500 | 131.2590 | .4532 | .9060 |
| X21 | 102.9500 | 130.1513 | .4685 | .9057 |
| X22 | 103.1500 | 133.5154 | .3576 | .9073 |
| X23 | 103.5250 | 129.8455 | .3416 | .9088 |
| X24 | 103.1250 | 131.8045 | .4140 | .9065 |
| X25 | 103.2500 | 128.8590 | .5987 | .9038 |
| X26 | 103.0750 | 130.4814 | .5289 | .9050 |
| X27 | 103.1750 | 130.4045 | .4391 | .9062 |
| X29 | 103.2750 | 129.2301 | .4300 | .9065 |
| X30 | 102.9250 | 133.2506 | .3393 | .9075 |
| X31 | 103.2750 | 129.3327 | .4078 | .9070 |
| X32 | 103.0000 | 131.2308 | .4298 | .9063 |
| X33 | 102.8250 | 132.5583 | .4761 | .9060 |
| X34 | 103.1750 | 130.4045 | .4391 | .9062 |
| X35 | 103.0750 | 132.8404 | .3325 | .9077 |
| X36 | 103.2250 | 127.8199 | .5118 | .9050 |
| X37 | 102.8750 | 132.6763 | .3816 | .9069 |
| X39 | 102.8750 | 133.2917 | .3362 | .9075 |
| X40 | 103.0000 | 130.0513 | .6390 | .9039 |

Reliability Coefficients

N of Cases = 40.0

N of Items = 32

Alpha = .9085 ✓

LAMPIRAN C

Skala Penelitian



LAMPIRAN C-1

Skala Penelitian EMPATI



PETUNJUK PENGISIAN

1. Bacalah pernyataan-pernyataan secara teliti, kemudian kerjakanlah dengan sungguh-sungguh sesuai dengan keadaan sebenarnya.
2. Pilih salah satu dari 4 kemungkinan jawaban yang tersedia dengan cara memberi **tanda silang X** pada jawaban yang paling tepat

/sesuai menurut Anda, bila;

SS : Sangat Sesuai

S : Sesuai

TS : Tidak Sesuai

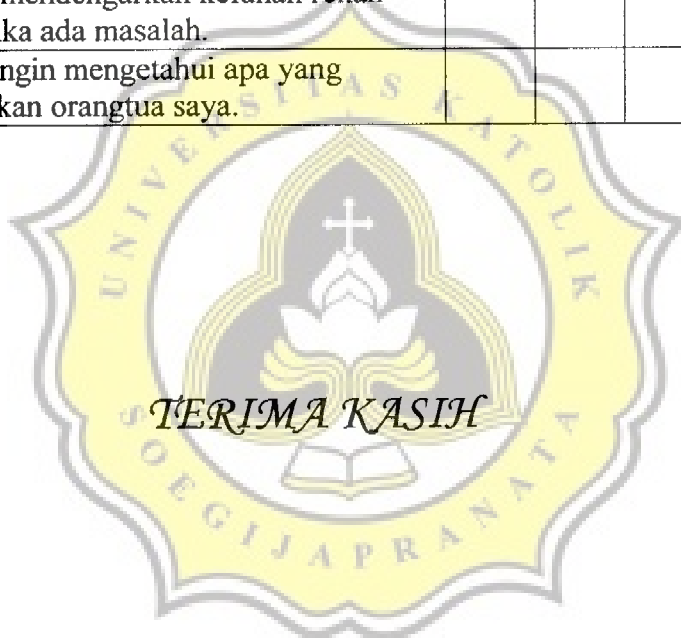
STS : Sangat Tidak Sesuai

3. Pada setiap pernyataan hanya ada **satu jawaban** dan semua jawaban dianggap **benar** apabila mencerminkan keadaan Anda sebenarnya.
4. Jawaban yang anda berikan dijamin kerahasiaannya, oleh karena itu nama Anda tidak perlu ditulis.
5. Bila sudah selesai periksa kembali jawaban Anda dan usahakanlah agar tidak ada pernyataan yang terlewatkan.

SELAMAT MENGERJAKAN.

| No | Pernyataan | SS | S | TS | STS |
|-----|-------------------------------------------------------------------------------------|----|---|----|-----|
| 1. | Saya bangga mempunyai siswa yang berprestasi. | | | | |
| 2. | Saya ikut berbahagia jika ada anggota keluarga yang berulang tahun. | | | | |
| 3. | .Jika mengetahui orangtua saya sedang punya masalah, saya pura-pura tidak tahu.. | | | | |
| 4. | Saya kurang memahami bagaimana perasaan orang lain yang sedang kecewa. | | | | |
| 5. | .Saya tidak tahu apakah siswa merasa senang atau tidak terhadap saya mengajar saya. | | | | |
| 6. | Saya merasa kurang senang jika ada rekan saya yang berhasil meraih prestasi. | | | | |
| 7. | Saya senang jika rekan saya mendapatkan penghargaan sebagai pendidik. | | | | |
| 8. | Saya sedih jika ada tetangga yang tidak berhasil dalam karier. | | | | |
| 9. | Saya peduli terhadap perasaan saudara yang sedang mengalami kesulitan. | | | | |
| 10. | Saya merasa iba melihat siswa yang tidak bisa melanjutkan sekolah karena biaya. | | | | |
| 11. | Saya tidak peduli dengan masalah yang sedang dihadapi orang lain. | | | | |
| 12. | Saya sulit mengerti mengapa orangtua saya kecewa. | | | | |
| 13. | Saya merasa tidak perlu memahami perasaan siswa. | | | | |
| 14. | Saya kurang peduli ketika mengetahui tetangga saya mengalami kecelakaan. | | | | |
| 15. | Saya ikut prihatin dengan masalah yang dihadapi rekan saya. | | | | |
| 16. | Saya dapat merasakan jika orangtua saya sedang sedih. | | | | |
| 17. | Saya menjenguk tetangga saya yang sedang sakit. | | | | |

| | | | | | |
|-----|----------------------------------------------------------------------------------------|--|--|--|--|
| 18. | Saya tertarik untuk menjadi orangtua asuh bagi siswa yang tidak mampu. | | | | |
| 19. | Saya tidak ada waktu berkunjung (<i>home visit</i>) ke rumah siswa yang bermasalah. | | | | |
| 20. | Saya kurang peduli dengan gerakan peduli korban bencana alam. | | | | |
| 21. | Saya kurang antusias mendengarkan rekan saya yang mengungkapkan perasaannya. | | | | |
| 22. | Saya tidak ingin mengetahui apa yang dirasakan rekan saya. | | | | |
| 23. | Saya berusaha meluangkan waktu untuk mendengarkan keluhan rekan saya jika ada masalah. | | | | |
| 24. | Saya ingin mengetahui apa yang dirasakan orangtua saya. | | | | |



LAMPIRAN C – 2

Skala Penelitian PERILAKU PROSOSIAL



PETUNJUK PENGISIAN

1. Bacalah pernyataan-pernyataan secara teliti, kemudian kerjakanlah dengan sungguh-sungguh sesuai dengan keadaan sebenarnya.
2. Pilih salah satu dari 4 kemungkinan jawaban yang tersedia dengan cara memberi **tanda silang (X)** pada jawaban yang paling tepat /sesuai menurut Anda, bila;
SS : Sangat Sering
S : Sering
J : Jarang
SJ : Sangat Jarang
3. Pada setiap pernyataan hanya ada **satu jawaban** dan semua jawaban dianggap benar apabila mencerminkan keadaan Anda sebenarnya.
4. Jawaban yang anda berikan dijamin kerahasiaanya, oleh karena itu nama Anda tidak perlu ditulis.
5. Bila sudah selesai periksa kembali jawaban Anda dan usahakanlah agar tidak ada pernyataan yang terlewatkan.

SELAMAT MENGERJAKAN.

| No. | Pernyataan. | SS | S | J | SJ |
|-----|-----------------------------------------------------------------------------------------|----|---|---|----|
| 1. | Saya bersedia berbagi pengalaman dengan siswa. | | | | |
| 2. | Mendengarkan keluh kesah siswa menyita waktu saya. | | | | |
| 3. | Saya memberikan kesempatan pada siswa untuk mengajukan pendapat. | | | | |
| 4. | Relasi yang akrab dengan para siswa akan menurunkan kewibawaan saya. | | | | |
| 5. | Saya bersedia membantu siswa menyelesaikan masalahnya. | | | | |
| 6. | Saya tidak mencampuri siswa yang berseteru. | | | | |
| 7. | Saya memberi pinjaman buku pelajaran, pada siswa yang tidak memilikinya. | | | | |
| 8. | Saya tidak membantu siswa yang mengalami kesulitan finansial. | | | | |
| 9. | Saya terbuka terhadap siswa berkaitan dengan kriteria ujian. | | | | |
| 10. | Saya terkadang tidak jujur terhadap siswa demi kebaikan bersama. | | | | |
| 11. | Siswa terbuka pada saya tentang masalah mereka. | | | | |
| 12. | Saya tidak suka berbagi pengalaman dengan para siswa. | | | | |
| 13. | Saya mengulangi penjelasan saya, jika siswa belum jelas. | | | | |
| 14. | Siswa yang belum paham dengan penjelasan saya, saya minta belajar sendiri. | | | | |
| 15. | Saya memotivasi siswa supaya giat belajar. | | | | |
| 16. | Menolong siswa yang tidak berprestasi kurang bermanfaat. | | | | |
| 17. | Saya memberi bantuan alat tulis bagi siswa yang tidak mampu. | | | | |
| 18. | Menurut saya, siswa yang tidak mempunyai buku pelajaran harus berusaha sendiri. | | | | |
| 19. | Saya memberi penilaian bagus bagi siswa yang dapat mengerjakan soal ujian dengan tepat. | | | | |
| 20. | Saya merahasiakan hal-hal tertentu demi kebaikan siswa. | | | | |

| | | | | | |
|-----|---------------------------------------------------------------------------------------------|--|--|--|--|
| 21. | Saya bersedia mendengarkan permasalahan yang dihadapi siswa. | | | | |
| 22. | Tidak ada manfaatnya mendengarkan masalah yang dihadapi siswa. | | | | |
| 23. | Saya bekerjasama dengan para siswa dalam perencanaan proses belajar-mengajar. | | | | |
| 24. | Siswa yang bodoh menghambat saya dalam menyampaikan pelajaran dikelas. | | | | |
| 25. | Saya memberi perhatian lebih pada siswa yang lamban dalam menerima pelajaran. | | | | |
| 26. | Siswa yang mempunyai masalah harus menyelesaikannya sendiri. | | | | |
| 27. | Saya membantu siswa yang tidak mampu. | | | | |
| 28. | Saya baru akan menolong siswa yang tertimpa musibah jika sudah ada guru lain yang menolong. | | | | |
| 29. | Saya tidak akan berbohong mengenai prestasi yang sudah dicapai siswa. | | | | |
| 30. | Saya mengabaikan siswa yang mencontek pada saat ulangan. | | | | |
| 31. | Saya akan menghibur siswa yang terkena musibah agar tabah dalam menghadapi cobaan. | | | | |
| 32. | Saya ingin siswa menyelesaikan masalah mereka sendiri. | | | | |
| 33. | Saya menggunakan sistem mengajar di kelas sesuai dengan kemampuan siswa. | | | | |
| 34. | Saya menjaga jarak dengan siswa. | | | | |
| 35. | Saya mendamaikan siswa yang bertengkar. | | | | |
| 36. | Tidak ada pertanyaan yang diajukan siswa untuk pelajaran saya. | | | | |
| 37. | Saya memberi bantuan pada siswa yang tertimpa musibah. | | | | |
| 38. | Memberi bantuan finansial pada siswa kurang mampu tidak bermanfaat. | | | | |
| 39. | .Saya memberi nilai siswa sesuai hasil yang mereka dapatkan | | | | |
| 40. | Saya memberikan penilaian bagus pada siswa yang tidak mengerjakan tugas. | | | | |

TERIMA KASIH

LAMPIRAN D

Data Penelitian



LAMPIRAN D - 1

Data Penelitian EMPATI



EMPATI - Valid

| No. | X01 | X02 | X03 | X04 | X06 | X07 | X09 | X10 | X11 | X12 | X13 | X14 | X15 | X17 | X18 | X20 | X21 |
|-----|-----|-----|-----|-----|-----|-----|-----|-----|-----|-----|-----|-----|-----|-----|-----|-----|-----|
| 1 | 3 | 3 | 3 | 3 | 3 | 3 | 3 | 3 | 3 | 3 | 3 | 3 | 3 | 3 | 2 | 3 | 3 |
| 2 | 3 | 3 | 4 | 2 | 3 | 4 | 4 | 3 | 4 | 4 | 3 | 4 | 4 | 4 | 1 | 3 | 3 |
| 3 | 3 | 4 | 3 | 2 | 3 | 3 | 3 | 2 | 3 | 2 | 3 | 3 | 2 | 2 | 2 | 3 | 4 |
| 4 | 3 | 3 | 3 | 3 | 3 | 4 | 2 | 3 | 3 | 2 | 2 | 3 | 4 | 3 | 3 | 3 | 3 |
| 5 | 3 | 4 | 3 | 4 | 4 | 4 | 4 | 4 | 4 | 4 | 4 | 4 | 4 | 4 | 3 | 3 | 3 |
| 6 | 3 | 4 | 3 | 2 | 3 | 2 | 3 | 3 | 3 | 3 | 4 | 3 | 4 | 2 | 3 | 3 | 4 |
| 7 | 2 | 3 | 3 | 2 | 3 | 3 | 3 | 3 | 4 | 3 | 3 | 3 | 3 | 3 | 2 | 3 | 3 |
| 8 | 3 | 3 | 4 | 3 | 3 | 3 | 3 | 3 | 3 | 2 | 3 | 2 | 3 | 2 | 3 | 3 | 3 |
| 9 | 4 | 1 | 4 | 4 | 4 | 4 | 4 | 4 | 4 | 4 | 4 | 4 | 4 | 4 | 4 | 4 | 4 |
| 10 | 4 | 4 | 4 | 4 | 4 | 4 | 4 | 4 | 4 | 4 | 4 | 4 | 4 | 4 | 4 | 4 | 4 |
| 11 | 3 | 3 | 2 | 2 | 4 | 4 | 4 | 4 | 3 | 3 | 3 | 3 | 3 | 4 | 4 | 3 | 3 |
| 12 | 3 | 3 | 3 | 3 | 3 | 4 | 3 | 3 | 3 | 3 | 3 | 3 | 3 | 3 | 2 | 3 | 3 |
| 13 | 3 | 3 | 3 | 3 | 3 | 3 | 2 | 3 | 3 | 3 | 3 | 3 | 4 | 3 | 3 | 3 | 3 |
| 14 | 3 | 1 | 2 | 4 | 4 | 3 | 3 | 4 | 3 | 4 | 3 | 4 | 1 | 2 | 3 | 3 | 1 |
| 15 | 4 | 4 | 3 | 4 | 4 | 4 | 4 | 4 | 4 | 2 | 4 | 4 | 4 | 4 | 1 | 4 | 4 |
| 16 | 3 | 4 | 4 | 3 | 3 | 3 | 4 | 3 | 3 | 4 | 4 | 3 | 3 | 4 | 2 | 3 | 3 |
| 17 | 3 | 4 | 3 | 3 | 4 | 4 | 3 | 3 | 4 | 4 | 3 | 4 | 4 | 3 | 2 | 4 | 3 |
| 18 | 3 | 2 | 3 | 4 | 2 | 3 | 2 | 2 | 2 | 3 | 3 | 3 | 3 | 3 | 3 | 3 | 3 |
| 19 | 3 | 3 | 2 | 2 | 4 | 4 | 3 | 3 | 4 | 2 | 2 | 3 | 3 | 3 | 1 | 3 | 4 |
| 20 | 3 | 2 | 3 | 4 | 2 | 4 | 4 | 4 | 3 | 3 | 3 | 3 | 3 | 4 | 4 | 4 | 3 |
| 21 | 3 | 3 | 3 | 3 | 3 | 3 | 4 | 4 | 4 | 3 | 4 | 4 | 3 | 3 | 4 | 3 | 4 |
| 22 | 3 | 4 | 4 | 4 | 4 | 4 | 4 | 4 | 3 | 2 | 4 | 4 | 4 | 2 | 2 | 4 | 4 |
| 23 | 4 | 3 | 4 | 3 | 4 | 4 | 4 | 4 | 3 | 4 | 4 | 4 | 4 | 3 | 3 | 3 | 4 |
| 24 | 2 | 3 | 3 | 3 | 3 | 4 | 4 | 3 | 3 | 2 | 3 | 3 | 4 | 3 | 2 | 3 | 4 |
| 25 | 2 | 3 | 2 | 1 | 1 | 3 | 2 | 2 | 3 | 3 | 1 | 3 | 3 | 2 | 1 | 1 | 3 |
| 26 | 3 | 1 | 1 | 1 | 1 | 2 | 1 | 4 | 3 | 1 | 1 | 1 | 2 | 2 | 1 | 4 | 2 |
| 27 | 3 | 3 | 3 | 3 | 3 | 3 | 3 | 3 | 3 | 3 | 3 | 3 | 2 | 3 | 3 | 3 | 3 |
| 28 | 3 | 4 | 3 | 4 | 3 | 4 | 2 | 3 | 4 | 4 | 4 | 3 | 3 | 3 | 3 | 3 | 4 |
| 29 | 3 | 3 | 3 | 3 | 3 | 4 | 4 | 4 | 4 | 3 | 3 | 3 | 3 | 4 | 4 | 3 | 3 |
| 30 | 4 | 3 | 4 | 4 | 3 | 2 | 3 | 3 | 4 | 2 | 4 | 2 | 3 | 3 | 2 | 4 | 4 |
| 31 | 3 | 4 | 3 | 2 | 3 | 3 | 3 | 2 | 2 | 3 | 3 | 3 | 3 | 3 | 3 | 3 | 3 |
| 32 | 4 | 3 | 4 | 2 | 4 | 4 | 4 | 3 | 3 | 3 | 2 | 3 | 3 | 4 | 4 | 3 | 3 |
| 33 | 1 | 2 | 3 | 4 | 4 | 4 | 3 | 3 | 3 | 4 | 3 | 3 | 4 | 2 | 4 | 2 | 3 |
| 34 | 3 | 3 | 2 | 3 | 4 | 4 | 2 | 3 | 4 | 2 | 3 | 3 | 3 | 4 | 1 | 2 | 3 |
| 35 | 4 | 4 | 3 | 3 | 4 | 3 | 3 | 4 | 4 | 3 | 4 | 2 | 3 | 4 | 3 | 3 | 3 |
| 36 | 3 | 3 | 4 | 3 | 4 | 3 | 3 | 4 | 3 | 4 | 3 | 2 | 3 | 4 | 2 | 4 | 4 |
| 37 | 2 | 4 | 4 | 4 | 3 | 3 | 3 | 3 | 3 | 3 | 4 | 3 | 4 | 3 | 3 | 3 | 4 |
| 38 | 3 | 4 | 4 | 3 | 4 | 4 | 4 | 2 | 4 | 2 | 3 | 2 | 4 | 4 | 3 | 4 | 4 |
| 39 | 3 | 4 | 2 | 4 | 3 | 4 | 3 | 4 | 3 | 3 | 4 | 4 | 3 | 4 | 4 | 3 | 4 |
| 40 | 3 | 3 | 1 | 2 | 3 | 3 | 3 | 3 | 3 | 2 | 2 | 3 | 3 | 3 | 2 | 3 | 3 |

EMPATI - Valid

| No. | X22 | X23 | X24 | EMP |
|-----|-----|-----|-----|-----|
| 1 | 3 | 3 | 2 | 58 |
| 2 | 3 | 4 | 4 | 67 |
| 3 | 4 | 2 | 2 | 55 |
| 4 | 3 | 2 | 3 | 58 |
| 5 | 4 | 4 | 2 | 73 |
| 6 | 2 | 4 | 3 | 61 |
| 7 | 3 | 3 | 3 | 58 |
| 8 | 3 | 3 | 2 | 57 |
| 9 | 4 | 4 | 1 | 74 |
| 10 | 4 | 4 | 4 | 80 |
| 11 | 4 | 3 | 3 | 65 |
| 12 | 3 | 3 | 3 | 60 |
| 13 | 3 | 3 | 3 | 60 |
| 14 | 3 | 4 | 3 | 58 |
| 15 | 4 | 2 | 4 | 72 |
| 16 | 3 | 4 | 4 | 67 |
| 17 | 3 | 4 | 3 | 68 |
| 18 | 4 | 3 | 3 | 57 |
| 19 | 3 | 2 | 2 | 56 |
| 20 | 2 | 3 | 3 | 64 |
| 21 | 3 | 3 | 4 | 68 |
| 22 | 4 | 2 | 4 | 70 |
| 23 | 4 | 4 | 4 | 74 |
| 24 | 3 | 2 | 3 | 60 |
| 25 | 1 | 3 | 1 | 41 |
| 26 | 1 | 1 | 1 | 34 |
| 27 | 3 | 3 | 3 | 59 |
| 28 | 4 | 4 | 4 | 69 |
| 29 | 4 | 3 | 3 | 67 |
| 30 | 2 | 2 | 4 | 62 |
| 31 | 3 | 3 | 3 | 58 |
| 32 | 3 | 3 | 2 | 64 |
| 33 | 4 | 4 | 3 | 63 |
| 34 | 3 | 2 | 3 | 57 |
| 35 | 4 | 3 | 4 | 68 |
| 36 | 3 | 4 | 3 | 66 |
| 37 | 3 | 3 | 4 | 66 |
| 38 | 4 | 2 | 3 | 67 |
| 39 | 3 | 3 | 4 | 69 |
| 40 | 3 | 3 | 3 | 54 |



LAMPIRAN D - 2

Data Penelitian PERILAKU PROSOSIAL



PERILAKU PROSOSIAL - Valid

| No. | X24 | X25 | X26 | X27 | X29 | X30 | X31 | X32 | X33 | X34 | X35 | X36 | X37 | X39 | X40 | PP |
|-----|-----|-----|-----|-----|-----|-----|-----|-----|-----|-----|-----|-----|-----|-----|-----|-----|
| 1 | 3 | 3 | 3 | 3 | 3 | 3 | 3 | 3 | 3 | 3 | 3 | 3 | 3 | 3 | 3 | 96 |
| 2 | 3 | 3 | 4 | 4 | 3 | 3 | 3 | 4 | 4 | 4 | 4 | 3 | 4 | 4 | 4 | 121 |
| 3 | 4 | 4 | 3 | 3 | 2 | 3 | 4 | 4 | 4 | 3 | 3 | 2 | 3 | 4 | 3 | 103 |
| 4 | 3 | 3 | 3 | 3 | 4 | 3 | 4 | 3 | 4 | 3 | 3 | 4 | 4 | 4 | 3 | 103 |
| 5 | 3 | 3 | 4 | 3 | 2 | 4 | 4 | 4 | 4 | 3 | 3 | 4 | 4 | 4 | 4 | 120 |
| 6 | 3 | 2 | 3 | 4 | 3 | 3 | 2 | 3 | 4 | 4 | 2 | 3 | 3 | 4 | 2 | 94 |
| 7 | 4 | 3 | 3 | 3 | 3 | 3 | 4 | 3 | 3 | 3 | 3 | 3 | 3 | 4 | 3 | 105 |
| 8 | 4 | 2 | 2 | 3 | 2 | 2 | 1 | 4 | 4 | 3 | 3 | 2 | 2 | 3 | 3 | 102 |
| 9 | 4 | 4 | 3 | 4 | 4 | 4 | 1 | 4 | 4 | 4 | 4 | 4 | 4 | 4 | 4 | 121 |
| 10 | 4 | 3 | 4 | 3 | 3 | 4 | 4 | 4 | 4 | 3 | 4 | 3 | 4 | 4 | 4 | 120 |
| 11 | 3 | 3 | 3 | 4 | 4 | 4 | 4 | 4 | 4 | 4 | 4 | 4 | 4 | 4 | 4 | 115 |
| 12 | 3 | 3 | 3 | 3 | 3 | 3 | 3 | 4 | 4 | 3 | 3 | 3 | 3 | 3 | 3 | 103 |
| 13 | 3 | 3 | 3 | 3 | 3 | 4 | 3 | 3 | 3 | 3 | 3 | 3 | 4 | 3 | 3 | 106 |
| 14 | 3 | 3 | 3 | 4 | 4 | 4 | 3 | 3 | 3 | 4 | 4 | 4 | 4 | 4 | 3 | 105 |
| 15 | 4 | 4 | 4 | 3 | 4 | 4 | 3 | 2 | 4 | 3 | 4 | 4 | 4 | 4 | 4 | 115 |
| 16 | 4 | 3 | 3 | 1 | 3 | 4 | 4 | 3 | 4 | 1 | 4 | 3 | 4 | 4 | 3 | 108 |
| 17 | 4 | 4 | 4 | 4 | 4 | 4 | 4 | 4 | 4 | 4 | 3 | 4 | 4 | 3 | 4 | 123 |
| 18 | 2 | 3 | 4 | 3 | 3 | 4 | 3 | 4 | 3 | 3 | 3 | 3 | 4 | 4 | 4 | 110 |
| 19 | 3 | 3 | 3 | 3 | 2 | 4 | 3 | 3 | 4 | 3 | 3 | 2 | 4 | 4 | 3 | 109 |
| 20 | 3 | 4 | 4 | 3 | 3 | 4 | 3 | 2 | 3 | 3 | 3 | 3 | 4 | 4 | 4 | 107 |
| 21 | 3 | 4 | 4 | 3 | 4 | 4 | 4 | 4 | 4 | 3 | 3 | 4 | 4 | 4 | 4 | 123 |
| 22 | 3 | 3 | 4 | 3 | 2 | 4 | 3 | 4 | 4 | 3 | 4 | 2 | 4 | 3 | 3 | 100 |
| 23 | 4 | 4 | 4 | 4 | 4 | 4 | 4 | 4 | 4 | 4 | 4 | 4 | 4 | 4 | 4 | 128 |
| 24 | 4 | 3 | 4 | 3 | 4 | 4 | 3 | 4 | 4 | 3 | 4 | 4 | 4 | 4 | 4 | 113 |
| 25 | 2 | 2 | 4 | 2 | 4 | 3 | 1 | 3 | 3 | 2 | 4 | 4 | 3 | 3 | 3 | 83 |
| 26 | 2 | 3 | 3 | 4 | 1 | 3 | 3 | 4 | 3 | 4 | 4 | 1 | 3 | 3 | 4 | 99 |
| 27 | 3 | 3 | 3 | 3 | 3 | 3 | 3 | 3 | 4 | 3 | 4 | 3 | 3 | 3 | 4 | 106 |
| 28 | 3 | 3 | 3 | 4 | 4 | 4 | 4 | 4 | 3 | 4 | 3 | 4 | 4 | 4 | 4 | 114 |
| 29 | 4 | 3 | 3 | 3 | 3 | 3 | 4 | 2 | 3 | 3 | 2 | 3 | 3 | 2 | 3 | 99 |
| 30 | 4 | 4 | 4 | 4 | 4 | 2 | 4 | 4 | 4 | 4 | 4 | 4 | 2 | 4 | 4 | 115 |
| 31 | 4 | 3 | 4 | 3 | 4 | 4 | 3 | 3 | 3 | 3 | 3 | 4 | 4 | 4 | 4 | 113 |
| 32 | 3 | 3 | 3 | 3 | 3 | 3 | 3 | 3 | 3 | 3 | 3 | 3 | 3 | 3 | 3 | 96 |
| 33 | 4 | 4 | 3 | 4 | 4 | 3 | 2 | 4 | 3 | 4 | 3 | 4 | 3 | 3 | 3 | 109 |
| 34 | 3 | 3 | 2 | 3 | 3 | 3 | 3 | 3 | 3 | 3 | 2 | 3 | 3 | 2 | 3 | 87 |
| 35 | 3 | 4 | 4 | 4 | 4 | 4 | 4 | 4 | 4 | 4 | 4 | 4 | 4 | 3 | 3 | 113 |
| 36 | 4 | 4 | 3 | 4 | 3 | 3 | 2 | 2 | 3 | 4 | 2 | 3 | 3 | 4 | 3 | 93 |
| 37 | 2 | 1 | 2 | 1 | 1 | 4 | 2 | 3 | 3 | 1 | 3 | 1 | 4 | 4 | 3 | 70 |
| 38 | 3 | 3 | 3 | 3 | 3 | 3 | 3 | 3 | 3 | 3 | 3 | 3 | 3 | 3 | 3 | 100 |
| 39 | 3 | 3 | 3 | 4 | 3 | 4 | 4 | 4 | 4 | 4 | 4 | 3 | 4 | 3 | 3 | 111 |
| 40 | 3 | 3 | 4 | 3 | 2 | 3 | 3 | 3 | 4 | 3 | 4 | 2 | 3 | 3 | 3 | 98 |

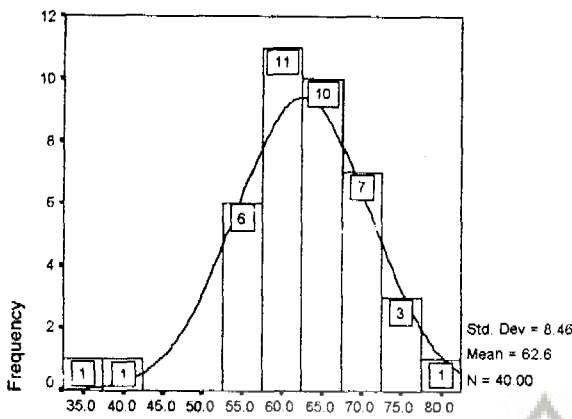


LAMPIRAN E

Uji Normalitas Sebaran

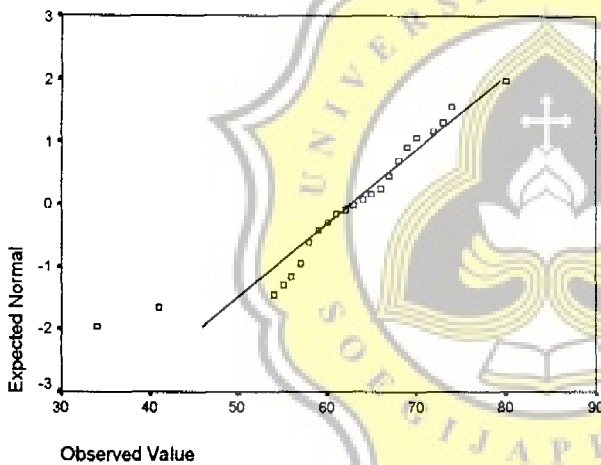
Empati

Histogram



Empati

Normal Q-Q Plot of Empati



NPar Tests

One-Sample Kolmogorov-Smirnov Test

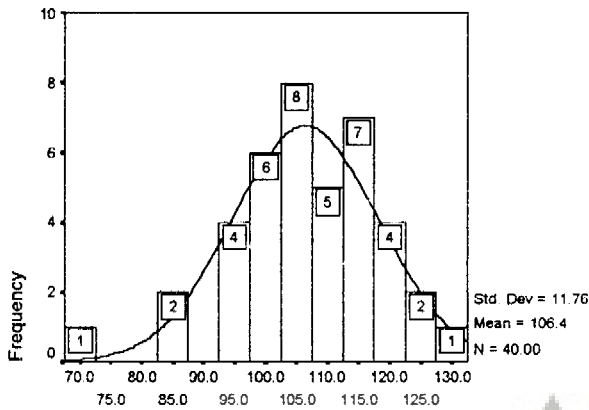
| | | Empati |
|----------------------------------|----------------|--------|
| N | | 40 |
| Normal Parameters ^{a,b} | Mean | 62.60 |
| | Std. Deviation | 8.46 |
| Most Extreme Differences | Absolute | .129 |
| | Positive | .075 |
| | Negative | -.129 |
| Kolmogorov-Smirnov Z | | .815 |
| Asymp. Sig. (2-tailed) | | .519 |

a. Test distribution is Normal.

b. Calculated from data.

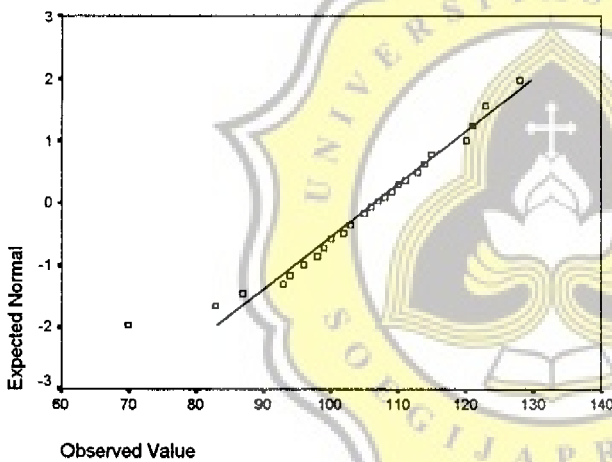
Perilaku Prososial

Histogram



Perilaku Prososial

Normal Q-Q Plot of Perilaku Prososial



NPar Tests

One-Sample Kolmogorov-Smirnov Test

| | | Perilaku Prososial |
|----------------------------------|----------------|--------------------|
| N | | 40 |
| Normal Parameters ^{a,b} | Mean | 106.40 |
| | Std. Deviation | 11.76 |
| Most Extreme Differences | Absolute | .065 |
| | Positive | .057 |
| | Negative | -.065 |
| Kolmogorov-Smirnov Z | | .409 ✓ |
| Asymp. Sig. (2-tailed) | | .996 ✓ |

a. Test distribution is Normal.

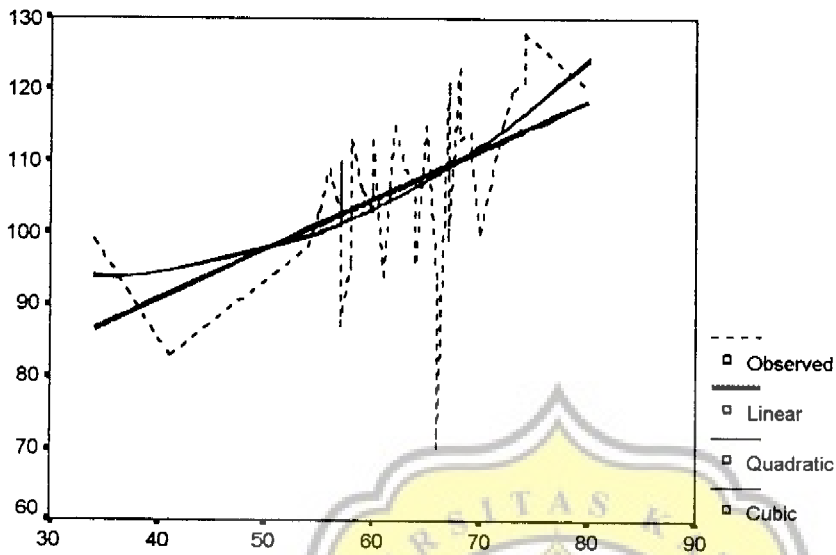
b. Calculated from data.

LAMPIRAN F

Uji Linearitas Hubungan



Perilaku Prososial



Empati

Independent: EMP

| Dependent | Mth | Rsq | d.f. | F | Sigf | b0 | b1 | b2 | b3 |
|-----------|-----|------|------|-------|------|---------|---------|-------|---------|
| PP | LIN | .248 | 38 | 12.54 | .001 | 63.0360 | .6927 | | |
| PP | QUA | .276 | 37 | 7.04 | .003 | 112.813 | -1.0600 | .0150 | |
| 9 PP | CUB | .276 | 37 | 7.04 | .003 | 98.1758 | -.2295 | | 8.8E-05 |

Notes:

9 Tolerance limits reached; some dependent variables were not entered.

LAMPIRAN G

Uji Hipotesis



Regression

Descriptive Statistics

| | Mean | Std. Deviation | N |
|--------------------|--------|----------------|----|
| Perilaku Prososial | 106.40 | 11.76 | 40 |
| Empati | 62.60 | 8.46 | 40 |

Correlations

| | | Perilaku Prososial | Empati |
|---------------------|--------------------|--------------------|--------|
| Pearson Correlation | Perilaku Prososial | 1.000 | .498 |
| | Empati | .498 | 1.000 |
| Sig. (1-tailed) | Perilaku Prososial | . | .001 |
| | Empati | .001 | . |
| N | Perilaku Prososial | 40 | 40 |
| | Empati | 40 | 40 |

Model Summary

| Model | R | R Square | Adjusted R Square | Std. Error of the Estimate |
|-------|-------------------|----------|-------------------|----------------------------|
| 1 | .498 ^a | .248 | .228 | 10.33 |

a. Predictors: (Constant), Empati

ANOVA^b

| Model | | Sum of Squares | df | Mean Square | F | Sig. |
|-------|------------|----------------|----|-------------|--------|-------------------|
| 1 | Regression | 1338.604 | 1 | 1338.604 | 12.544 | .001 ^a |
| | Residual | 4054.996 | 38 | 106.710 | | |
| | Total | 5393.600 | 39 | | | |

a. Predictors: (Constant), Empati

b. Dependent Variable: Perilaku Prososial

Coefficients^a

| Model | | Unstandardized Coefficients | | Standardized Coefficients | t | Sig. |
|-------|------------|-----------------------------|------------|---------------------------|-------|------|
| | | B | Std. Error | Beta | | |
| 1 | (Constant) | 63.036 | 12.352 | | 5.103 | .000 |
| | Empati | .693 | .196 | .498 | 3.542 | .001 |

a. Dependent Variable: Perilaku Prososial

Correlations

Correlations

| | | Empati | Perilaku Prososial |
|--------------------|---------------------|--------|-----------------------|
| Empati | Pearson Correlation | 1.000 | .498** |
| | Sig. (1-tailed) | . | .001 |
| | N | 40 | 40 |
| Perilaku Prososial | Pearson Correlation | .498** | 1.000 |
| | Sig. (1-tailed) | .001 | . |
| | N | 40 | 40 |

** . Correlation is significant at the 0.01 level (1-tailed).

