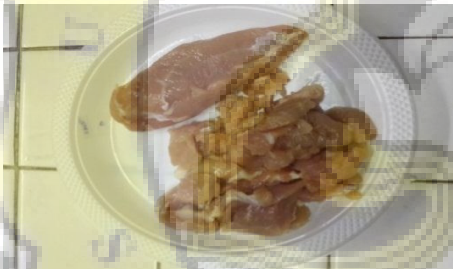


7. LAMPIRAN

Lampiran 1. Foto Senyawa Kromanon Deamina Komersial dengan Merk Dagang Vet-i



Lampiran 2. Foto Daging Dada Ayam Dosis Kontrol (a) dan Daging Dada Ayam Kromanon Deamina Dosis 50ml (b)



(a)



(b)

Lampiran 3. Uji Normalitas Data SPSS

Tests of Normality

	Kolmogorov-Smirnov ^a			Shapiro-Wilk		
	Statistic	df	Sig.	Statistic	df	Sig.
Tekstur	,076	90	,200*	,966	90	,019
Aw	,063	90	,200*	,975	90	,080
Kadar_Air	,082	90	,176	,964	90	,014
Kadar_Protein	,091	90	,061	,954	90	,003
Kadar_Lemak	,079	90	,200*	,986	90	,432

*. This is a lower bound of the true significance.

a. Lilliefors Significance Correction

Lampiran 4. Pengujian 2 Way Anova untuk Kromanon Deamina Dosis 0 ml/Dosis Kontrol

Tests of Between-Subjects Effects

Source	Dependent Variable	Type III Sum of Squares	df	Mean Square	F	Sig.
Corrected Model	Tekstur	27640208,1 ^a	8	3455026,016	96,574	,000
	Kadar_Air	2254,900 ^b	8	281,862	2875,184	,000
	aw	,227 ^c	8	,028	583,425	,000
	Kadar_Protein	27640208,1 ^a	8	3455026,016	96,574	,000
	Kadar_Lemak	107,321 ^d	8	13,415	110,001	,000
Intercept	Tekstur	484307932	1	484307931,6	13537,281	,000
	Kadar_Air	21973,456	1	21973,456	224143,8	,000
	aw	21,342	1	21,342	438129,6	,000
	Kadar_Protein	484307932	1	484307931,6	13537,281	,000
	Kadar_Lemak	23729,161	1	23729,161	194574,0	,000
Suhu	Tekstur	3030565,013	2	1515282,507	42,355	,000
	Kadar_Air	1422,028	2	711,014	7252,814	,000
	aw	,139	2	,069	1422,062	,000
	Kadar_Protein	3030565,013	2	1515282,507	42,355	,000
	Kadar_Lemak	39,111	2	19,555	160,350	,000
Waktu	Tekstur	21265544,5	2	10632772,25	297,205	,000
	Kadar_Air	746,215	2	373,107	3805,943	,000
	aw	,081	2	,040	830,662	,000
	Kadar_Protein	21265544,5	2	10632772,25	297,205	,000
	Kadar_Lemak	66,532	2	33,266	272,776	,000
Suhu * Waktu	Tekstur	3344098,607	4	836024,652	23,368	,000
	Kadar_Air	86,657	4	21,664	220,990	,000
	aw	,008	4	,002	40,489	,000
	Kadar_Protein	3344098,607	4	836024,652	23,368	,000
	Kadar_Lemak	1,678	4	,419	3,439	,018
Error	Tekstur	1287931,151	36	35775,865		
	Kadar_Air	3,529	36	,098		
	aw	,002	36	4,87E-005		
	Kadar_Protein	1287931,151	36	35775,865		
	Kadar_Lemak	4,390	36	,122		
Total	Tekstur	513236071	45			
	Kadar_Air	24231,885	45			
	aw	21,571	45			
	Kadar_Protein	513236071	45			
	Kadar_Lemak	23840,872	45			
Corrected Total	Tekstur	28928139,3	44			
	Kadar_Air	2258,429	44			
	aw	,229	44			
	Kadar_Protein	28928139,3	44			
	Kadar_Lemak	111,711	44			

a. R Squared = ,955 (Adjusted R Squared = ,946)

b. R Squared = ,998 (Adjusted R Squared = ,998)

c. R Squared = ,992 (Adjusted R Squared = ,991)

d. R Squared = ,961 (Adjusted R Squared = ,952)

Lampiran 5. Uji Beda Berdasarkan Suhu Larutan (Kromanon Deamina Dosis 0 ml/Dosis Kontrol)

Tekstur

Duncan^{a,b,c}

Suhu_Larutan	N	Subset	
		1	2
Suhu 20 oC	15	2914,612	
Suhu 30 oC	15		3440,084
Suhu 50 oC	15		3487,132
Sig.		1,000	,500

Means for groups in homogeneous subsets are displayed.
Based on Type III Sum of Squares

The error term is Mean Square(Error) = 35775,865.

- Uses Harmonic Mean Sample Size = 15,000.
- The group sizes are unequal. The harmonic mean of the group sizes is used. Type I error levels are not guaranteed.
- Alpha = ,05.

Aw

Duncan^{a,b,c}

Suhu_Larutan	N	Subset		
		1	2	3
Suhu 50 oC	15	,61213		
Suhu 20 oC	15		,71193	
Suhu 30 oC	15			,74193
Sig.		1,000	1,000	1,000

Means for groups in homogeneous subsets are displayed.
Based on Type III Sum of Squares

The error term is Mean Square(Error) = 4,87E-005.

- Uses Harmonic Mean Sample Size = 15,000.
- The group sizes are unequal. The harmonic mean of the group sizes is used. Type I error levels are not guaranteed.
- Alpha = ,05.

Kadar_Air

Duncan^{a,b,c}

Suhu_Larutan	N	Subset		
		1	2	3
Suhu 50 oC	15	14,37947		
Suhu 20 oC	15		24,30573	
Suhu 30 oC	15			27,60727
Sig.		1,000	1,000	1,000

Means for groups in homogeneous subsets are displayed.
Based on Type III Sum of Squares

The error term is Mean Square(Error) = ,098.

- Uses Harmonic Mean Sample Size = 15,000.
- The group sizes are unequal. The harmonic mean of the group sizes is used. Type I error levels are not guaranteed.
- Alpha = ,05.

Kadar_ProteinDuncan^{a,b,c}

Suhu Larutan	N	Subset	
		1	2
Suhu 50 oC	15	22,24600	
Suhu 30 oC	15	22,36400	
Suhu 20 oC	15		24,28000
Sig.		,361	1,000

Means for groups in homogeneous subsets are displayed.

Based on Type III Sum of Squares

The error term is Mean Square(Error) = ,122.

- Uses Harmonic Mean Sample Size = 15,000.
- The group sizes are unequal. The harmonic mean of the group sizes is used. Type I error levels are not guaranteed.
- Alpha = ,05.

Kadar LemakDuncan^{a,b,c}

Suhu Larutan	N	Subset	
		1	2
Suhu 20 oC	15	2,06667	
Suhu 30 oC	15	2,20333	
Suhu 50 oC	15		2,43667
Sig.		,199	1,000

Means for groups in homogeneous subsets are displayed.

Based on Type III Sum of Squares

The error term is Mean Square(Error) = ,082.

- Uses Harmonic Mean Sample Size = 15,000.
- The group sizes are unequal. The harmonic mean of the group sizes is used. Type I error levels are not guaranteed.
- Alpha = ,05.

Lampiran 6. Uji Beda Berdasarkan Waktu Perendaman (Kromanon Deamina Dosis 0 ml/Dosis Kontrol)

TeksturDuncan^{a,b,c}

Waktu Perendaman	N	Subset		
		1	2	3
Perendaman 1 jam	15	2581,468		
Perendaman 3 jam	15		3045,157	
Perendaman 5 jam	15			4215,204
Sig.		1,000	1,000	1,000

Means for groups in homogeneous subsets are displayed.

Based on Type III Sum of Squares

The error term is Mean Square(Error) = 35775,865.

- Uses Harmonic Mean Sample Size = 15,000.
- The group sizes are unequal. The harmonic mean of the group sizes is used. Type I error levels are not guaranteed.
- Alpha = ,05.

AwDuncan^{a,b,c}

Waktu_Perendaman	N	Subset		
		1	2	3
Perendaman 5 jam	15	,64173		
Perendaman 3 jam	15		,67980	
Perendaman 1 jam	15			,74447
Sig.		1,000	1,000	1,000

Means for groups in homogeneous subsets are displayed.

Based on Type III Sum of Squares

The error term is Mean Square(Error) = 4,87E-005.

- Uses Harmonic Mean Sample Size = 15,000.
- The group sizes are unequal. The harmonic mean of the group sizes is used. Type I error levels are not guaranteed.
- Alpha = ,05.

Kadar_AirDuncan^{a,b,c}

Waktu_Perendaman	N	Subset		
		1	2	3
Perendaman 5 jam	15	17,48527		
Perendaman 3 jam	15		21,41707	
Perendaman 1 jam	15			27,39013
Sig.		1,000	1,000	1,000

Means for groups in homogeneous subsets are displayed.

Based on Type III Sum of Squares

The error term is Mean Square(Error) = ,098.

- Uses Harmonic Mean Sample Size = 15,000.
- The group sizes are unequal. The harmonic mean of the group sizes is used. Type I error levels are not guaranteed.
- Alpha = ,05.

Kadar_ProteinDuncan^{a,b,c}

Waktu_Perendaman	N	Subset		
		1	2	3
Perendaman 1 jam	15	21,41600		
Perendaman 3 jam	15		23,08733	
Perendaman 5 jam	15			24,38667
Sig.		1,000	1,000	1,000

Means for groups in homogeneous subsets are displayed.

Based on Type III Sum of Squares

The error term is Mean Square(Error) = ,122.

- Uses Harmonic Mean Sample Size = 15,000.
- The group sizes are unequal. The harmonic mean of the group sizes is used. Type I error levels are not guaranteed.
- Alpha = ,05.

Kadar_LemakDuncan^{a,b,c}

Waktu_Perendaman	N	Subset		
		1	2	3
Perendaman 5 jam	15	1,79167		
Perendaman 3 jam	15		2,25333	
Perendaman 1 jam	15			2,66167
Sig.		1,000	1,000	1,000

Means for groups in homogeneous subsets are displayed.

Based on Type III Sum of Squares

The error term is Mean Square(Error) = ,082.

- Uses Harmonic Mean Sample Size = 15,000.
- The group sizes are unequal. The harmonic mean of the group sizes is used. Type I error levels are not guaranteed.
- Alpha = ,05.

Lampiran 7. Pengujian 2 Way Anova untuk Kromanon Deamina 50 ml

Tests of Between-Subjects Effects

Source	Dependent Variable	Type III Sum of Squares	df	Mean Square	F	Sig.
Corrected Model	Tekstur	26704715,0 ^a	8	3338089,372	103,750	,000
	Kadar_Air	1045,828 ^b	8	130,728	1803,412	,000
	aw	,098 ^c	8	,012	2343,173	,000
	Kadar_Protein	107,555 ^d	8	13,444	207,194	,000
	Kadar_Lemak	10,658 ^e	8	1,332	11,892	,000
Intercept	Tekstur	566002143	1	566002142,8	17591,710	,000
	Kadar_Air	16266,439	1	16266,439	224397,1	,000
	aw	19,486	1	19,486	3715553	,000
	Kadar_Protein	26617,267	1	26617,267	410204,6	,000
	Kadar_Lemak	97,977	1	97,977	874,577	,000
Suhu	Tekstur	3211473,080	2	1605736,540	49,907	,000
	Kadar_Air	614,789	2	307,395	4240,538	,000
	aw	,060	2	,030	5702,318	,000
	Kadar_Protein	15,049	2	7,524	115,961	,000
	Kadar_Lemak	2,321	2	1,160	10,358	,000
Waktu	Tekstur	18129896,8	2	9064948,416	281,744	,000
	Kadar_Air	412,997	2	206,498	2848,664	,000
	aw	,036	2	,018	3409,911	,000
	Kadar_Protein	83,099	2	41,550	640,331	,000
	Kadar_Lemak	6,847	2	3,423	30,558	,000
Suhu * Waktu	Tekstur	5363345,063	4	1340836,266	41,674	,000
	Kadar_Air	18,042	4	4,511	62,223	,000
	aw	,003	4	,001	130,231	,000
	Kadar_Protein	9,407	4	2,352	36,243	,000
	Kadar_Lemak	1,490	4	,373	3,325	,020
Error	Tekstur	1158277,244	36	32174,368		
	Kadar_Air	2,610	36	,072		
	aw	,000	36	5,24E-006		
	Kadar_Protein	2,336	36	,065		
	Kadar_Lemak	4,033	36	,112		
Total	Tekstur	593865135	45			
	Kadar_Air	17314,877	45			
	aw	19,585	45			
	Kadar_Protein	26727,158	45			
	Kadar_Lemak	112,668	45			
Corrected Total	Tekstur	27862992,2	44			
	Kadar_Air	1048,438	44			
	aw	,098	44			
	Kadar_Protein	109,891	44			
	Kadar_Lemak	14,691	44			

a. R Squared = ,958 (Adjusted R Squared = ,949)

b. R Squared = ,998 (Adjusted R Squared = ,997)

c. R Squared = ,998 (Adjusted R Squared = ,998)

d. R Squared = ,979 (Adjusted R Squared = ,974)

e. R Squared = ,725 (Adjusted R Squared = ,664)

Lampiran 8. Uji Beda Berdasarkan Suhu Larutan (Kromanon Deamina Dosis 50 ml)

Tekstur

Duncan^{a,b,c}

Suhu Larutan	N	Subset		
		1	2	3
Suhu 20 oC	15	3197,560		
Suhu 30 oC	15		3595,635	
Suhu 50 oC	15			3846,375
Sig.		1,000	1,000	1,000

Means for groups in homogeneous subsets are displayed.

Based on Type III Sum of Squares

The error term is Mean Square(Error) = 32174,368.

- Uses Harmonic Mean Sample Size = 15,000.
- The group sizes are unequal. The harmonic mean of the group sizes is used. Type I error levels are not guaranteed.
- Alpha = ,05.

Aw

Duncan^{a,b,c}

Suhu Larutan	N	Subset		
		1	2	3
Suhu 50 oC	15	,60660		
Suhu 30 oC	15		,68080	
Suhu 20 oC	15			,68673
Sig.		1,000	1,000	1,000

Means for groups in homogeneous subsets are displayed.

Based on Type III Sum of Squares

The error term is Mean Square(Error) = 5,24E-006.

- Uses Harmonic Mean Sample Size = 15,000.
- The group sizes are unequal. The harmonic mean of the group sizes is used. Type I error levels are not guaranteed.
- Alpha = ,05.

Kadar Air

Duncan^{a,b,c}

Suhu Larutan	N	Subset		
		1	2	3
Suhu 50 oC	15	13,79893		
Suhu 30 oC	15		21,29260	
Suhu 20 oC	15			21,94607
Sig.		1,000	1,000	1,000

Means for groups in homogeneous subsets are displayed.

Based on Type III Sum of Squares

The error term is Mean Square(Error) = ,072.

- Uses Harmonic Mean Sample Size = 15,000.
- The group sizes are unequal. The harmonic mean of the group sizes is used. Type I error levels are not guaranteed.
- Alpha = ,05.

Kadar_ProteinDuncan^{a,b,c}

Suhu Larutan	N	Subset		
		1	2	3
Suhu 50 oC	15	23,55933		
Suhu 30 oC	15		24,44267	
Suhu 20 oC	15			24,96000
Sig.		1,000	1,000	1,000

Means for groups in homogeneous subsets are displayed.

Based on Type III Sum of Squares

The error term is Mean Square(Error) = ,065.

- Uses Harmonic Mean Sample Size = 15,000.
- The group sizes are unequal. The harmonic mean of the group sizes is used. Type I error levels are not guaranteed.
- Alpha = ,05.

Kadar_LemakDuncan^{a,b,c}

Suhu Larutan	N	Subset	
		1	2
Suhu 50 oC	15	1,26833	
Suhu 20 oC	15	1,36667	
Suhu 30 oC	15		1,79167
Sig.		,426	1,000

Means for groups in homogeneous subsets are displayed.

Based on Type III Sum of Squares

The error term is Mean Square(Error) = ,112.

- Uses Harmonic Mean Sample Size = 15,000.
- The group sizes are unequal. The harmonic mean of the group sizes is used. Type I error levels are not guaranteed.
- Alpha = ,05.

Lampiran 9. Uji Beda Berdasarkan Waktu Perendaman (Kromanon Deamina Dosis 50 ml)

TeksturDuncan^{a,b,c}

Waktu Perendaman	N	Subset		
		1	2	3
Perendaman 1 jam	15	2827,964		
Perendaman 3 jam	15		3439,880	
Perendaman 5 jam	15			4371,726
Sig.		1,000	1,000	1,000

Means for groups in homogeneous subsets are displayed.

Based on Type III Sum of Squares

The error term is Mean Square(Error) = 32174,368.

- Uses Harmonic Mean Sample Size = 15,000.
- The group sizes are unequal. The harmonic mean of the group sizes is used. Type I error levels are not guaranteed.
- Alpha = ,05.

AwDuncan^{a,b,c}

Waktu_Perendaman	N	Subset		
		1	2	3
Perendaman 5 jam	15	,62100		
Perendaman 3 jam	15		,66380	
Perendaman 1 jam	15			,68933
Sig.		1,000	1,000	1,000

Means for groups in homogeneous subsets are displayed.

Based on Type III Sum of Squares

The error term is Mean Square(Error) = 5,24E-006.

- Uses Harmonic Mean Sample Size = 15,000.
- The group sizes are unequal. The harmonic mean of the group sizes is used. Type I error levels are not guaranteed.
- Alpha = ,05.

Kadar_AirDuncan^{a,b,c}

Waktu_Perendaman	N	Subset		
		1	2	3
Perendaman 5 jam	15	15,18140		
Perendaman 3 jam	15		19,26727	
Perendaman 1 jam	15			22,58893
Sig.		1,000	1,000	1,000

Means for groups in homogeneous subsets are displayed.

Based on Type III Sum of Squares

The error term is Mean Square(Error) = ,072.

- Uses Harmonic Mean Sample Size = 15,000.
- The group sizes are unequal. The harmonic mean of the group sizes is used. Type I error levels are not guaranteed.
- Alpha = ,05.

Kadar_ProteinDuncan^{a,b,c}

Waktu_Perendaman	N	Subset		
		1	2	3
Perendaman 1 jam	15	22,70533		
Perendaman 3 jam	15		24,22667	
Perendaman 5 jam	15			26,03000
Sig.		1,000	1,000	1,000

Means for groups in homogeneous subsets are displayed.

Based on Type III Sum of Squares

The error term is Mean Square(Error) = ,065.

- Uses Harmonic Mean Sample Size = 15,000.
- The group sizes are unequal. The harmonic mean of the group sizes is used. Type I error levels are not guaranteed.
- Alpha = ,05.

Kadar_LemakDuncan^{a,b,c}

Waktu_Perendaman	N	Subset		
		1	2	3
Perendaman 5 jam	15	1,03500		
Perendaman 3 jam	15		1,40833	
Perendaman 1 jam	15			1,98333
Sig.		1,000	1,000	1,000

Means for groups in homogeneous subsets are displayed.

Based on Type III Sum of Squares

The error term is Mean Square(Error) = ,112.

- Uses Harmonic Mean Sample Size = 15,000.
- The group sizes are unequal. The harmonic mean of the group sizes is used. Type I error levels are not guaranteed.
- Alpha = ,05.

Lampiran 10. Uji Independent Sample T-Test (Berdasarkan Waktu Perendaman)

		Levene's Test for Equality of Variances		t-test for Equality of Means						
		F	Sig.	t	df	Sig. (2-tailed)	Mean Difference	Std. Error Difference	95% Confidence Interval of the Difference	
									Lower	Upper
KA_1JAM	Equal variances assumed	3,384	,076	2,510	28	,018	4,80120	1,91290	,88280	8,71960
	Equal variances not assumed			2,510	25,211	,019	4,80120	1,91290	,86317	8,73923
KA_3JAM	Equal variances assumed	13,970	,001	1,094	28	,283	2,14980	1,96569	-1,87674	6,17634
	Equal variances not assumed			1,094	22,548	,286	2,14980	1,96569	-1,92107	6,22067
KA_5JAM	Equal variances assumed	1,897	,179	1,401	28	,172	2,30387	1,64432	-1,06437	5,67210
	Equal variances not assumed			1,401	24,283	,174	2,30387	1,64432	-1,08775	5,69548
Aw_1JAM	Equal variances assumed	4,375	,046	2,784	28	,010	,05513	,01980	,01457	,09570
	Equal variances not assumed			2,784	23,849	,010	,05513	,01980	,01425	,09602
Aw_3JAM	Equal variances assumed	13,425	,001	,871	28	,391	,01600	,01837	-,02164	,05364
	Equal variances not assumed			,871	22,630	,393	,01600	,01837	-,02204	,05404
Aw_5JAM	Equal variances assumed	1,022	,321	1,251	28	,221	,02073	,01657	-,01321	,05468
	Equal variances not assumed			1,251	25,867	,222	,02073	,01657	-,01334	,05480
T_1JAM	Equal variances assumed	1,176	,287	-1,187	28	,245	-246,49594	207,61321	-671,772	178,78043
	Equal variances not assumed			-1,187	26,967	,245	-246,49594	207,61321	-672,507	179,51523
T_3JAM	Equal variances assumed	,479	,494	-2,618	28	,014	-394,72251	150,77143	-703,564	-85,88124
	Equal variances not assumed			-2,618	27,493	,014	-394,72251	150,77143	-703,821	-85,62435
T_5JAM	Equal variances assumed	,096	,758	-1,200	28	,240	-156,52218	130,38924	-423,612	110,56806
	Equal variances not assumed			-1,200	27,735	,240	-156,52218	130,38924	-423,727	110,68314
KP_1JAM	Equal variances assumed	,663	,422	-3,175	28	,004	-1,28933	,40603	-2,12104	-,45763
	Equal variances not assumed			-3,175	27,372	,004	-1,28933	,40603	-2,12190	-,45676
KP_3JAM	Equal variances assumed	9,394	,005	-3,353	28	,002	-1,13933	,33977	-1,83533	-,44334
	Equal variances not assumed			-3,353	20,648	,003	-1,13933	,33977	-1,84666	-,43200
KP_5JAM	Equal variances assumed	18,788	,000	-6,578	28	,000	-1,64333	,24983	-2,15508	-1,13159
	Equal variances not assumed			-6,578	18,803	,000	-1,64333	,24983	-2,16660	-1,12007
KL_1JAM	Equal variances assumed	,936	,342	4,597	28	,000	,67833	,14755	,37609	,98058
	Equal variances not assumed			4,597	26,921	,000	,67833	,14755	,37554	,98112
KL_3JAM	Equal variances assumed	,235	,632	6,558	28	,000	,84500	,12886	,58105	1,10895
	Equal variances not assumed			6,558	27,884	,000	,84500	,12886	,58100	1,10900
KL_5JAM	Equal variances assumed	11,341	,002	4,771	28	,000	,75667	,15859	,43180	1,08153
	Equal variances not assumed			4,771	21,041	,000	,75667	,15859	,42689	1,08644

Lampiran 11. Uji Independent Sample T-Test (Berdasarkan Suhu Perendaman)

Independent Samples Test

		Levene's Test for Equality of Variances		t-test for Equality of Means						
		F	Sig.	t	df	Sig. (2-tailed)	Mean Difference	Std. Error Difference	95% Confidence Interval of the Difference	
									Lower	Upper
KA_20	Equal variances assumed	6,451	,017	7,336	28	,000	7,54553	1,02853	5,43869	9,65238
	Equal variances not assumed			7,336	20,713	,000	7,54553	1,02853	5,40479	9,68628
KA_30	Equal variances assumed	11,880	,002	5,391	28	,000	6,67893	1,23881	4,14134	9,21653
	Equal variances not assumed			5,391	22,484	,000	6,67893	1,23881	4,11300	9,24487
KA_50	Equal variances assumed	7,313	,012	4,944	28	,000	4,37067	,88405	2,55977	6,18156
	Equal variances not assumed			4,944	21,489	,000	4,37067	,88405	2,53472	6,20661
Aw_20	Equal variances assumed	5,535	,026	6,698	28	,000	,07107	,01061	,04933	,09280
	Equal variances not assumed			6,698	20,827	,000	,07107	,01061	,04899	,09314
Aw_30	Equal variances assumed	24,285	,000	4,590	28	,000	,06327	,01378	,03503	,09150
	Equal variances not assumed			4,590	17,940	,000	,06327	,01378	,03430	,09223
Aw_50	Equal variances assumed	1,407	,246	4,838	28	,000	,04327	,00894	,02495	,06159
	Equal variances not assumed			4,838	25,666	,000	,04327	,00894	,02487	,06166
T_20	Equal variances assumed	9,876	,004	-7,855	28	,000	-1506,561	191,79910	-1899,44	-1113,68
	Equal variances not assumed			-7,855	21,620	,000	-1506,561	191,79910	-1904,73	-1108,39
T_30	Equal variances assumed	12,277	,002	-8,392	28	,000	-1521,651	181,32479	-1893,08	-1150,22
	Equal variances not assumed			-8,392	19,243	,000	-1521,651	181,32479	-1900,84	-1142,46
T_50	Equal variances assumed	6,942	,014	-7,654	28	,000	-544,00853	71,07878	-689,607	-398,410
	Equal variances not assumed			-7,654	25,121	,000	-544,00853	71,07878	-690,362	-397,655
KP_20	Equal variances assumed	,046	,831	-4,428	28	,000	-1,45333	,32825	-2,12572	-,78095
	Equal variances not assumed			-4,428	25,524	,000	-1,45333	,32825	-2,12867	-,77800
KP_30	Equal variances assumed	,024	,879	-5,960	28	,000	-2,54533	,42706	-3,42013	-1,67054
	Equal variances not assumed			-5,960	27,943	,000	-2,54533	,42706	-3,42021	-1,67046
KP_50	Equal variances assumed	13,845	,001	-9,985	28	,000	-3,07600	,30808	-3,70707	-2,44493
	Equal variances not assumed			-9,985	21,034	,000	-3,07600	,30808	-3,71662	-2,43538
KL_20	Equal variances assumed	1,332	,258	4,255	28	,000	,80667	,18958	,41833	1,19501
	Equal variances not assumed			4,255	24,290	,000	,80667	,18958	,41564	1,19769
KL_30	Equal variances assumed	,147	,705	3,084	28	,005	,39500	,12806	,13268	,65732
	Equal variances not assumed			3,084	26,129	,005	,39500	,12806	,13183	,65817
KL_50	Equal variances assumed	,407	,529	6,697	28	,000	1,30167	,19438	,90351	1,69983
	Equal variances not assumed			6,697	27,151	,000	1,30167	,19438	,90295	1,70039

Lampiran 12. Uji Korelasi Bivariat

Correlations

		kadar_air	aw	tekstur	kadar_protein	kadar lemak
kadar_air	Pearson Correlation	1	,994**	-,650**	-,333**	,430**
	Sig. (2-tailed)		,000	,000	,001	,000
	N	90	90	90	90	90
aw	Pearson Correlation	,994**	1	-,644**	-,331**	,423**
	Sig. (2-tailed)	,000		,000	,001	,000
	N	90	90	90	90	90
tekstur	Pearson Correlation	-,650**	-,644**	1	,477**	-,454**
	Sig. (2-tailed)	,000	,000		,000	,000
	N	90	90	90	90	90
kadar_protein	Pearson Correlation	-,333**	-,331**	,477**	1	-,691**
	Sig. (2-tailed)	,001	,001	,000		,000
	N	90	90	90	90	90
kadar lemak	Pearson Correlation	,430**	,423**	-,454**	-,691**	1
	Sig. (2-tailed)	,000	,000	,000	,000	
	N	90	90	90	90	90

** . Correlation is significant at the 0.01 level (2-tailed).

Lampiran 13. Uji Korelasi Parsial

Correlations

Control Variables			kadar_air	aw	tekstur	kadar_protein	kadar lemak
dosis	kadar_air	Correlation	1,000	,993	-,637	-,265	,364
		Significance (2-tailed)	.	,000	,000	,012	,000
		df	0	87	87	87	87
	aw	Correlation	,993	1,000	-,631	-,262	,355
		Significance (2-tailed)	,000	.	,000	,013	,001
		df	87	0	87	87	87
	tekstur	Correlation	-,637	-,631	1,000	,454	-,446
		Significance (2-tailed)	,000	,000	.	,000	,000
		df	87	87	0	87	87
	kadar_protein	Correlation	-,265	-,262	,454	1,000	-,616
		Significance (2-tailed)	,012	,013	,000	.	,000
		df	87	87	87	0	87
	kadar lemak	Correlation	,364	,355	-,446	-,616	1,000
		Significance (2-tailed)	,000	,001	,000	,000	.
		df	87	87	87	87	0