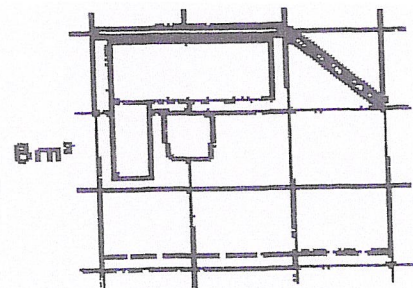
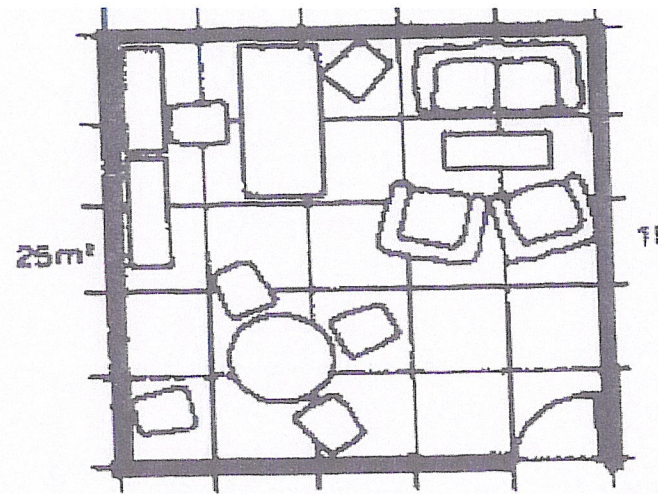
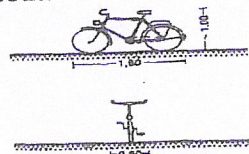


LAMPIRAN

Pendekatan besaran ruang

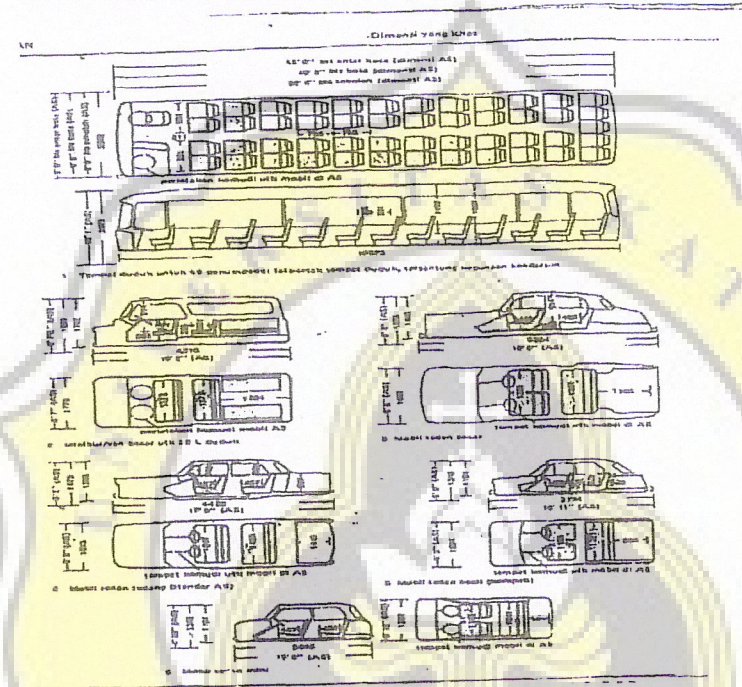


Dimensi Sepeda

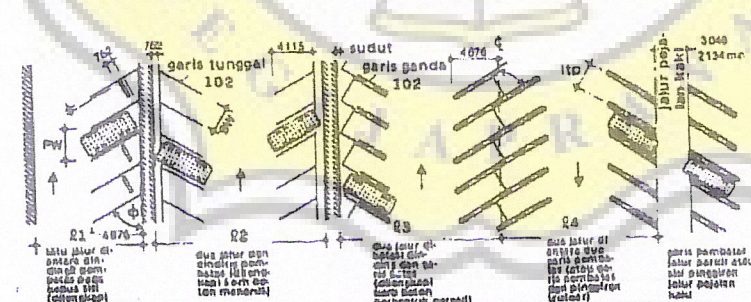


Demensi Kendaraan

Dimensi kendaraan roda 4



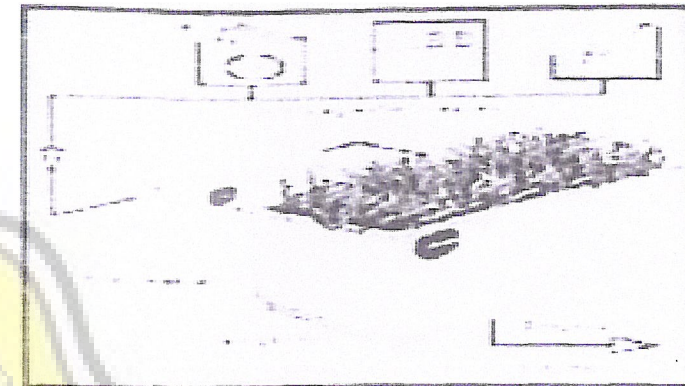
Pola Parkiran



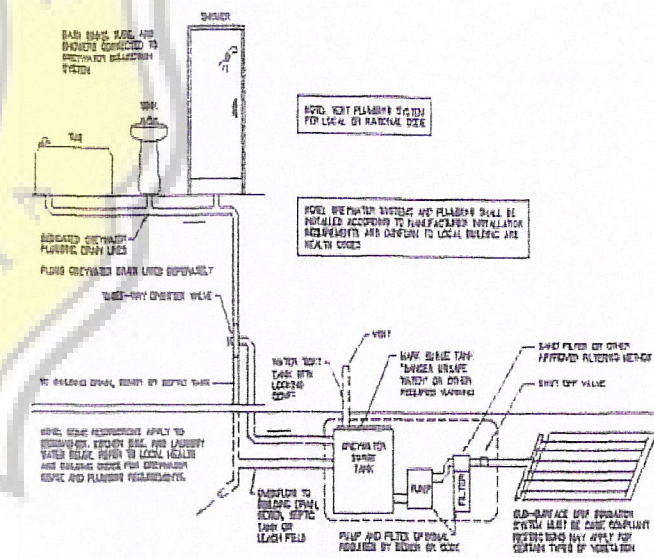
θ sudut jalur parkir		45°	50°	55°	60°	65°	70°	75°	80°	85°	90°
2743	1	9.75	9.98	10.36	10.77	11.43	12.09	12.8	13.51	14.07	14.63
	2	15.03	15.54	16.2	16.91	17.63	18.29	18.85	19.61	19.74	20.12
	3	14.12	14.88	15.65	16.41	17.07	17.88	18.59	19.2	19.66	20.12
	4	13.61	14.17	14.94	15.7	16.46	17.37	18.19	18.9	19.56	20.12
2896	1	9.75	9.96	10.36	10.67	11.23	11.84	12.65	13.31	14.02	14.63
	2	14.99	15.39	15.8	16.31	16.87	17.68	18.44	19.1	19.66	20.09
	3	14.33	14.68	15.19	15.7	16.43	17.37	18.19	18.9	19.56	20.09
	4	13.61	13.97	14.48	15.19	16.0	16.99	17.9	18.74	19.45	20.09

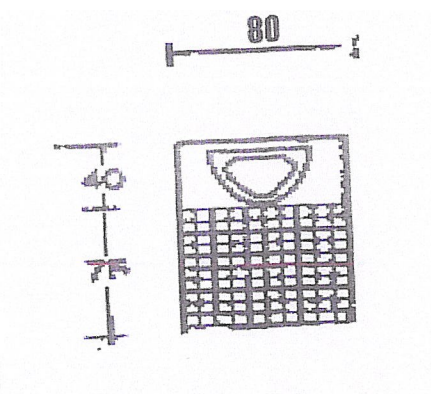
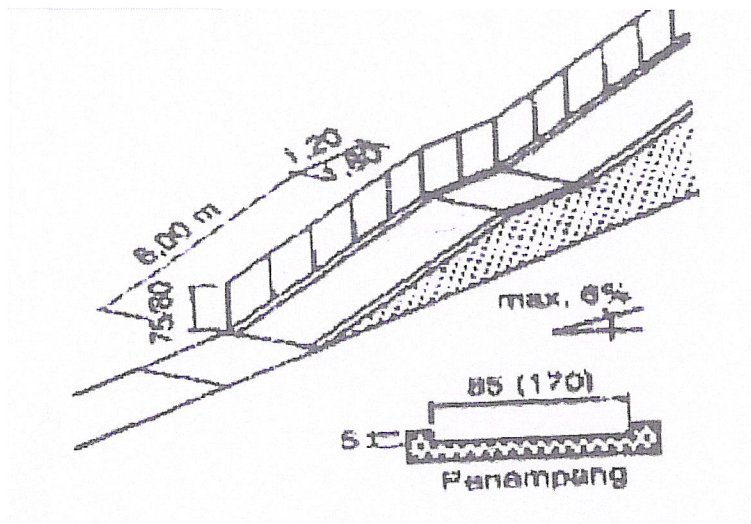
Catatan: besarnya sudut θ yang lebih besar dari 70° mempunyai lebar 2m untuk jalur B arah

Sistem pengolahan air kotor



Sistem pengolahan air limbah

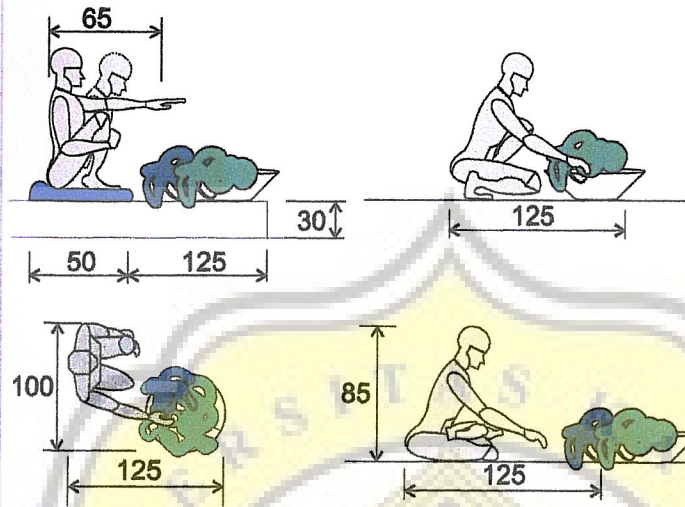




LOS

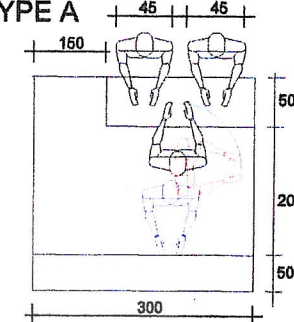
Sumber : analisa

PEDAGANG DASARAN



Sumber : analisa

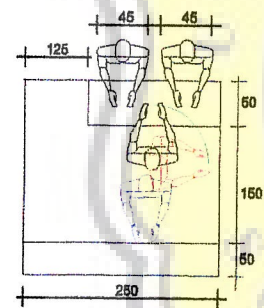
KIOS TYPE A



Sumber : analisa

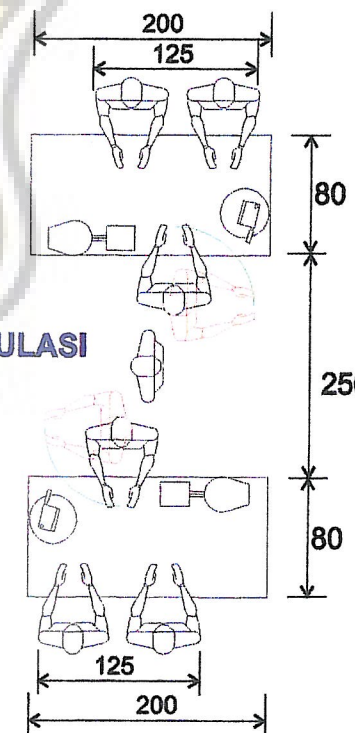
Pengguna = 1 orang
 Ukuran = 3.5 x 3
 Luas total = 10.5 m²

SIRKULASI PENGUNJUNG DAN PEDAGANG

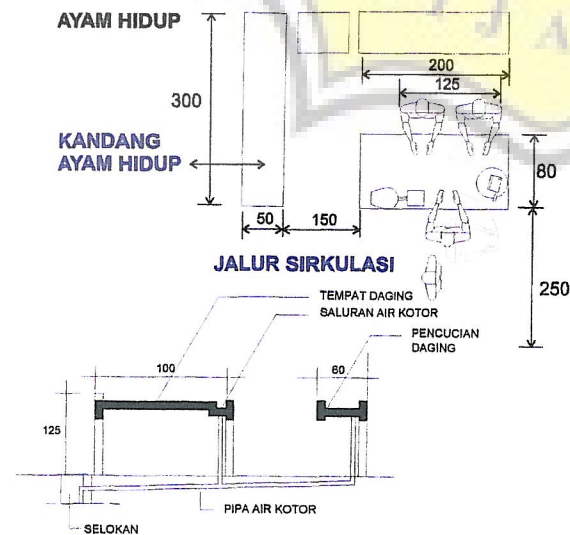


Ukuran = 2.5 x 2.5
 Luas total = 5 m²

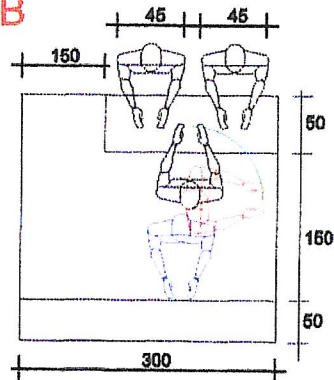
JALUR SIRKULASI



Sumber : analisa

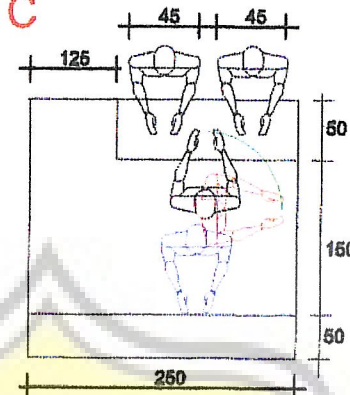


TYPE B



Pengguna = 1 orang
Ukuran = 2.5 x 3
Luas total = 7.5 m²

TYPE C



Pengguna = 1 orang
Ukuran = 2.5 x 2.5
Luas total = 5 m²

Sumber : analisa

Sumber : analisa

Areal bongkar buat pada pasar Bringharjo, Yogyakarta

