



				<b>LAMPIRAN</b>
--	--	--	--	-----------------

Kompleks Wisata lidah Buaya di Kota Pontianak



## PERHITUNGAN BESARAN RUANG

### 1) FASILITAS WISATA MINI KITCHEN

1. Mini kitchen (kapasitas 13 orang, 1 *tour guide* per ruangan, 2 *chief* → ada 2 ruang)

Properti ruang :

a. Kursi tamu, guide	: (0,6 x 0,7) x 11	= 4,62 m <sup>2</sup>
b. Meja panjang	: (1,6 x 0,6) x 2	= 0,96 m <sup>2</sup>
c. Lemari	: 1,1 x 1	= 1,1 m <sup>2</sup>
d. Meja dapur	: 1,5 x 0,8	= 1,2 m <sup>2</sup>

Jumlah = 7,88 m<sup>2</sup>

Sirkulasi 100% = 7,88 m<sup>2</sup>

Total = 15,76 m<sup>2</sup> ~ ada 2 ruang + Sirk 100%, maka total 63,04 m<sup>2</sup>

### 2) FASILITAS INFORMASI

2. Front desk (kapasitas 2 orang)

Properti ruang :

a. Meja, Kursi kerja	: 2,00 x 1,70	= 3,4 m <sup>2</sup>
b. Lemari Arsip	: 1,1 x 1	= 1,1 m <sup>2</sup>
c. Kursi Tamu	: (0,6 x 0,7) x 2	= 0,84 m <sup>2</sup>

Jumlah = 5,34 m<sup>2</sup>

Sirkulasi 30% = 1,602 m<sup>2</sup>

Total = 6,942 m<sup>2</sup> ~ 7 m<sup>2</sup>

3. Ruang Loker Tiket (kapasitas 1 orang karyawan)

Properti ruang :

a. Meja, Kursi Counter	: 1,3 x 3	= 3,9 m <sup>2</sup>
------------------------	-----------	----------------------

Jumlah = 3,9 m<sup>2</sup>

Sirkulasi 20% = 0,78 m<sup>2</sup>

Total = 4,68 m<sup>2</sup> ~ 4,8 m<sup>2</sup>

4. Ruang Guide (kapasitas 3 orang)

Properti ruang :

a. Meja, Kursi kerja	: 2,00 x 1,70	= 3,4 m <sup>2</sup>
b. Lemari Arsip	: 1,1 x 1	= 1,1 m <sup>2</sup>
c. Kursi Tamu	: (0,6 x 0,7) x 2	= 0,84 m <sup>2</sup>

Jumlah = 5,34 m<sup>2</sup>

Sirkulasi 20% = 1,068 m<sup>2</sup>

Total = 6,408 m<sup>2</sup> ~ 6,6 m<sup>2</sup>

### 3) SHOWROOM ALOE VERA

#### 5. Showroom Aloe Vera (kapasitas 40 pengunjung, 2 tour guide)

Properti ruang :

- a. + Sirk 50% →  $6 \text{ m}^2$                       Tanaman contoh (+ jarak) :  $(2 \times 1) \times 2 = 4 \text{ m}^2$   
b. Sirk 100% →  $7,5 \text{ m}^2$                       Panel informasi :  $(2,5 \times 1,5) = 3,75 \text{ m}^2 +$   
c. Sirk 100% →  $4,8 \text{ m}^2$                       Meja pameran /pajang:  $(2 \times 0,6) \times 2 = 2,4 \text{ m}^2 +$   
d. 100% →  $12,8 \text{ m}^2$                       Rak pameran/pajang :  $(2 \times 0,8) \times 4 = 6,4 \text{ Sirk}$

Jumlah =  $31,1 \text{ m}^2$   
Sirkulasi 100% =  $331,1 \text{ m}^2$   
Total =  $62,2 \text{ m}^2 \sim 63 \text{ m}^2$

#### 6. Ruang pemutaran film ( kapasitas 40 pengunjung, 1 tour guide, 1 operator )

Properti ruang :

- a. Kursi :  $((0,45 \times 0,45) \times 42) = 8,505 \text{ m}^2 + \text{sirk.50\%} = 12,7575 \text{ m}^2$   
b. Meja :  $1,20 \times 0,8 = 0,96 \text{ m}^2 + \text{sirk.50\%} = 1,35 \text{ m}^2$   
c. Layar LCD/Projector :  $1,2 \times 0,5 = 0,6 \text{ m}^2 + \text{Sirk 100\%} = 1,2 \text{ m}^2$

Jumlah =  $15,3075 \text{ m}^2$   
Sirkulasi 100% =  $15,3075 \text{ m}^2$   
Total =  $30,615 \text{ m}^2 \sim 31 \text{ m}^2$

#### 7. Ruang perpustakaan ( kapasitas 10 Orng)

Properti :

- Rak buku :  $(0,3 \times 2) \times 5 = 3 \text{ m}^2$   
Meja :  $1,2 \times 0,8 = 0,96 \text{ m}^2$   
Jumlah :  $3,96 \text{ m}^2$   
Sirkulasi 100%  
Total :  $7,92 \text{ m}^2$

### 4) MINI MART ALOE VERA

#### 8. Area Penjualan (kapasitas 30 pengunjung, 4 karyawan)

Properti ruang :

- a. Rak Pamer Dinding :  $(1,25 \times 0,7) \times 6 = 5,25 \text{ m}^2$   
b. Rak Pamer Ruang :  $(1,3 \times 1,25) \times 4 = 6,5 \text{ m}^2$   
c. Kasir :  $1,8 \times 1,27 = 2,286 \text{ m}^2$   
d. Sirkulasi per orang :  $1 \times 32,64 = 32,64 \text{ m}^2$

Jumlah =  $46,676 \text{ m}^2$   
Sirkulasi 100% =  $46,676 \text{ m}^2$   
Total =  $93,352 \text{ m}^2 \sim 94 \text{ m}^2$

#### 9. Gudang (kapasitas 2 orang)

Properti ruang :

- a. Lemari Dinding :  $(1,80 \times 0,85) \times 8 = 12,24 \text{ m}^2$   
Jumlah =  $12,24 \text{ m}^2$   
Sirkulasi 100% =  $12,24 \text{ m}^2$   
Total =  $24,48 \text{ m}^2 \sim 25 \text{ m}^2$

#### 10. Downloading Area

Luas :  $27,30 \text{ m}^2$

## 5) ATM CENTER

### 11. Ruang ATM

Properti ruang :

a. Mesin ATM :  $(1,5 \times 1) \times 4 = 6 \text{ m}^2$

Jumlah =  $6 \text{ m}^2$

Sirkulasi 100% =  $6 \text{ m}^2$

Total =  $12 \text{ m}^2$

## 6) SPA

### 12. Ruang Tunggu (kapasitas 8 orang)

Properti ruang :

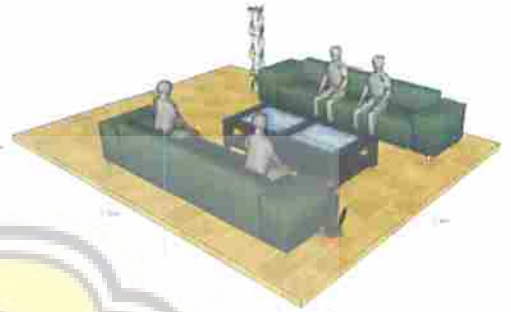
a. Kursi Tamu :  $(2,8 \times 0,9) \times 2 = 5,04 \text{ m}^2$

b. Meja :  $1,2 \times 0,7 = 0,84 \text{ m}^2$

Jumlah =  $5,88 \text{ m}^2$

Sirkulasi 20% =  $1,176 \text{ m}^2$

Total =  $7,056 \text{ m}^2 \sim 7,2 \text{ m}^2$



### 13. Ruang SPA Single (kapasitas 2 orang)

Properti ruang :

a. Sofa :  $1,2 \times 0,8 = 0,96 \text{ m}^2$

b. Meja :  $1,0 \times 0,5 = 0,50 \text{ m}^2$

c. Lemari :  $1,20 \times 0,85 = 1,02 \text{ m}^2$

d. T. Tidur Tunggal :  $2,10 \times 0,90 = 1,89 \text{ m}^2$

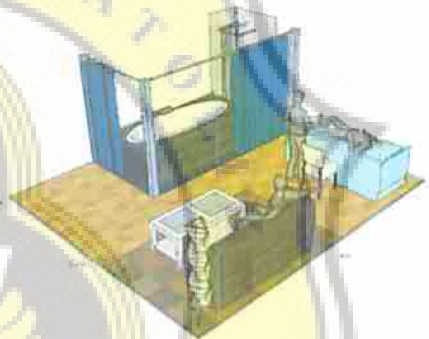
e. Shower Set :  $1,5 \times 1,5 = 2,25 \text{ m}^2$

f. Single Bathup :  $1,92 \times 0,24 = 0,4608 \text{ m}^2$

Jumlah =  $7,0808 \text{ m}^2$

Sirkulasi 50% =  $3,6 \text{ m}^2$

Total =  $10,8 \text{ m}^2 \sim 12 \text{ m}^2$



### 14. Ruang SPA Couple (kapasitas 4 orang)

Properti ruang :

a. Sofa :  $1,2 \times 0,8 = 0,96 \text{ m}^2$

b. Meja :  $1,0 \times 0,5 = 0,50 \text{ m}^2$

c. Lemari :  $1,20 \times 0,85 = 1,02 \text{ m}^2$

d. T. Tidur Tunggal :  $(2,10 \times 0,90) \times 2 = 3,78 \text{ m}^2$

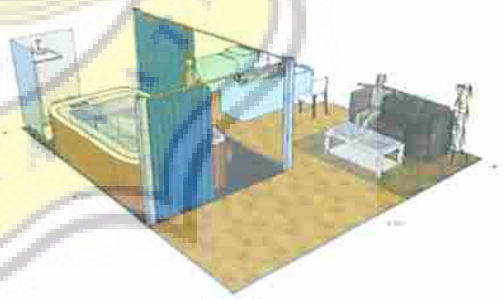
e. Shower Set :  $1,5 \times 1,5 = 2,25 \text{ m}^2$

f. Big Bathup :  $1,80 \times 0,80 = 1,44 \text{ m}^2$

Jumlah =  $9,86 \text{ m}^2$

Sirkulasi 50% =  $4,93 \text{ m}^2$

Total =  $14,79 \text{ m}^2 \sim 15 \text{ m}^2$



## 7) RESTO

### 15. Hall Makan (kapasitas 400 orang)

Properti ruang :

a. Meja, Kursi Makan

(@ 4 orang) :  $(1,75 \times 1,25) \times 100 = 218,75 \text{ m}^2$

Jumlah =  $218,75 \text{ m}^2$

Sirkulasi 50% =  $109,375 \text{ m}^2$

Total =  $328,125 \text{ m}^2 \sim 330 \text{ m}^2$

### 16. Mini Bar (kapasitas 10 orang)

Properti ruang :

a. Meja Panjang :  $2,5 \times 0,8 = 2,08 \text{ m}^2$



b. Kursi Bulat (d=0,5) :  $(3,14 \times 0,25^2) \times 10 = 1,96 \text{ m}^2$

Jumlah =  $3,96 \text{ m}^2$   
 Sirkulasi 50% =  $1,98 \text{ m}^2$   
 Total =  $5,94 \text{ m}^2 \sim 6 \text{ m}^2$

**17. Kasir**

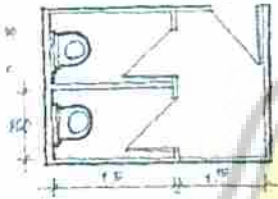
Properti ruang :

a. Kasir :  $(1,8 \times 1,27) \times 2 = 4,572 \text{ m}^2$

Jumlah =  $4,572 \text{ m}^2$   
 Sirkulasi 20% =  $0,9144 \text{ m}^2$   
 Total =  $5,4864 \text{ m}^2 \sim 5,5 \text{ m}^2$

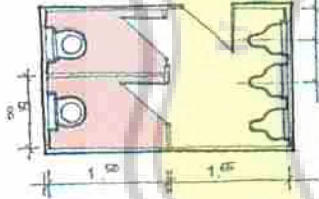
**18. Toilet Wanita (kapasitas 2 orang)**

Luas per unit :  $1,7 \times 2,65 = 4,61 \text{ m}^2$   
 Luas :  $4,61 \times 4 = 18,02 \text{ m}^2$



**19. Toilet Pria (kapasitas 2 orang)**

Luas per unit :  $1,7 \times 3,15 = 5,355 \text{ m}^2$   
 Luas :  $5,355 \times 4 = 21,42 \text{ m}^2$



**20. Dapur Makanan**

- a. Kompor :  $(0,89 \times 0,51) \times 2 = 0,9078 \text{ m}^2$
- b. Meja Kerja :  $(1,8 \times 0,8) \times 2 = 2,88 \text{ m}^2$
- c. Kulkas :  $(0,9 \times 0,7) \times 2 = 1,26 \text{ m}^2$
- d. Freezer :  $(1,2 \times 0,8) \times 2 = 1,92 \text{ m}^2$
- e. Lemari Dinding :  $(1,5 \times 0,85) \times 2 = 2,55 \text{ m}^2$
- f. Meja Cuci Piring :  $(0,8 \times 0,6) \times 2 = 0,96 \text{ m}^2$

Jumlah =  $10,4778 \text{ m}^2$   
 Sirkulasi 100% =  $10,4778 \text{ m}^2$   
 Total =  $20,9556 \text{ m}^2 \sim 32 \text{ m}^2$

**21. Dapur Minuman**

- a. Kulkas :  $(0,9 \times 0,7) \times 4 = 2,52 \text{ m}^2$
- b. Freezer :  $(1,2 \times 0,8) \times 4 = 3,84 \text{ m}^2$
- c. Meja Dapur, dll :  $(2,2 \times 0,7) \times 2 = 3,08 \text{ m}^2$

Jumlah =  $12,52 \text{ m}^2$   
 Sirkulasi 100% =  $12,52 \text{ m}^2$   
 Total =  $25,04 \text{ m}^2 \sim 25 \text{ m}^2$

**22. Gudang (kapasitas 2 orang)**

Properti ruang :

a. Lemari Dinding :  $(1,80 \times 0,85) \times 8 = 12,24 \text{ m}^2$

Jumlah =  $12,24 \text{ m}^2$

Sirkulasi 100% = 12,24 m<sup>2</sup>  
 Total = 24,48 m<sup>2</sup> ~ 25 m<sup>2</sup>

**23. Ruang Cleaning Service (kapasitas 2 orang)**

Properti ruang :

a. Lemari Alat : (1,50 x 0,85) x 2 = 2,55 m<sup>2</sup>

Jumlah = 2,55 m<sup>2</sup>

Sirkulasi 100% = 2,55 m<sup>2</sup>

Total = 5,1 m<sup>2</sup> ~ 5,2 m<sup>2</sup>

**8) AREA SANTAI**

**24. Gazebo Outdoor (kapasitas @ 6 orang, 10 unit)**

Properti ruang :

a. Meja, Kursi Makan (@ 6 kursi) : (1,88 x 1,70) x 10 = 31,96 m<sup>2</sup>

Jumlah = 31,96 m<sup>2</sup>

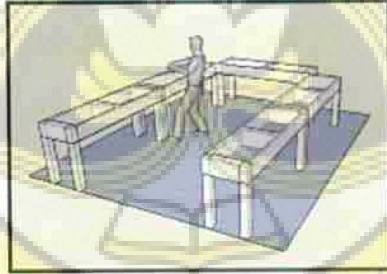
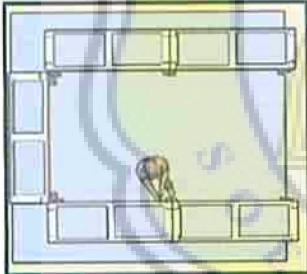
Sirkulasi 50% = 15,98 m<sup>2</sup>

Total = 47,94 m<sup>2</sup> ~ 48 m<sup>2</sup>

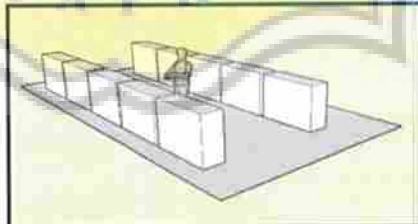
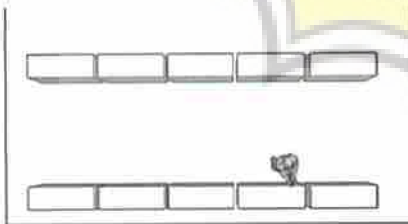
**9) MINI PABRIK LIDAH BUAYA**

Standart Luas Bangunan = 312 m<sup>2</sup>

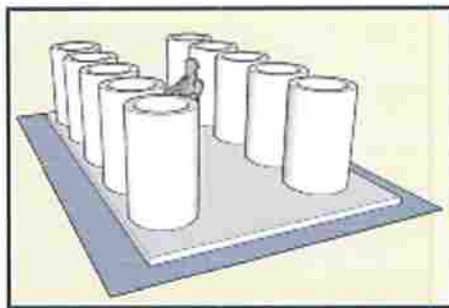
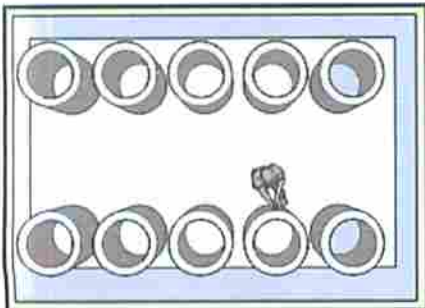
**25. Area pencucian lidah buaya**



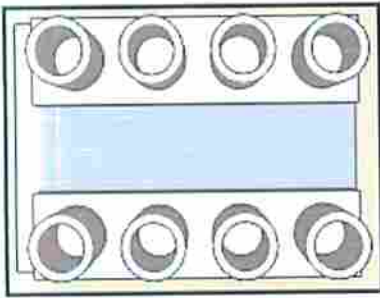
**26. Ruang pengupasan**



**27. Ruang perendaman**



## 28. Ruang perebusan



## 10) BALAI PENELITIAN KULTUR JARINGAN

### 29. Ruang bahan (kapasitas 2 orang)

Properti ruang :

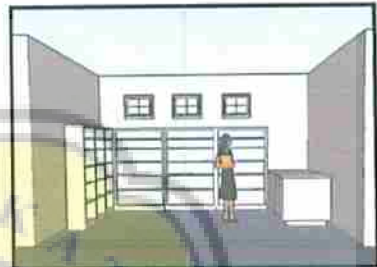
$$\text{Rak} : 1,00 \times 0,3 = 0,3 \text{ m}^2 \times 3 \text{ unit} = 0,9 \text{ m}^2$$

$$\text{Meja+kursi} = 2,00 \times 1,7 = 3,4 \text{ m}^2 \times 2 = 6,8 \text{ m}^2$$

$$\text{Jumlah} : 0,9 + 6,8 = 7,7 \text{ m}^2$$

Sirk.100%

$$\text{Total: } 15,4 \text{ m}^2$$



### 30. Ruang persiapan (kapasitas 2 orang)

Properti ruang :

$$\text{a. Rak Penyimpanan} : (0,3 \times 1) \times 3 = 0,9 \text{ m}^2$$

$$\text{b. Meja+kursi} : 2 \times 1,7 = 3,4 \text{ m}^2$$

$$\text{c. Wastafel} : 1,8 \times 0,6 = 1,08 \text{ m}^2$$

$$\text{Jumlah} = 5,38 \text{ m}^2$$

Sirkulasi 100%

$$\text{Total} = 10,76 \text{ m}^2$$



### 31. Ruang media tanam (kapasitas 2 orang)

Properti ruang :

$$\text{a. Meja+kursi} : (2 \times 1,7) \times 4 = 13,6 \text{ m}^2$$

$$\text{b. Lemari pendingin} : 0,6 \times 0,6 = 0,36 \text{ m}^2$$

$$\text{Jumlah} = 13,96 \text{ m}^2$$

Sirkulasi 100%

$$\text{Total} = 27,92 \text{ m}^2$$



### 32. Ruang sterilisasi (kapasitas 4 orang)

Properti ruang :

$$\text{a. Alat sterilisasi} : 0,9 \times 0,6 = 0,54 \text{ m}^2$$

$$\text{b. Meja} : 2 \times 1 = 2 \text{ m}^2$$

$$\text{c. Meja+kursi} : (2 \times 1,7) \times 4 = 13,6 \text{ m}^2$$

$$\text{d. Rak} : 1 \times 0,3 = 0,3 \text{ m}^2$$

$$\text{Jumlah} = 6,24 \text{ m}^2$$

Sirkulasi 100%

$$\text{Total} = 12,48 \text{ m}^2$$

**33. Ruang transfer (kapasitas 2 orang)**

Properti ruang :

- a. Meja :  $1,2 \times 0,6 = 0,72 \text{ m}^2$
- b. Laminar air flow :  $1 \times 0,6 = 0,6 \text{ m}^2$
- c. Rak :  $(1 \times 0,3) \times 2 = 0,6 \text{ m}^2$
- d. Kursi :  $(0,45 \times 0,45) \times 2 = 0,4 \text{ m}^2$

Jumlah =  $2,3 \text{ m}^2$

Sirkulasi 200%

Total =  $6,9 \text{ m}^2$

**34. Ruang termostatik (kapasitas 2 orang)**

- a. Rak penyimpanan :  $(4 \times 0,8) \times 4 = 12,8 \text{ m}^2$

Sirkulasi 100%

Total =  $25,6 \text{ m}^2$

**35. Ruang sholat (kapasitas 5 orang)**

Standart ( $\text{m}^2$ ) =  $1,04/\text{orang}$ .

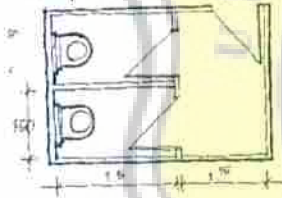
Kapasitas 5 org =  $5 \times 1,04 \text{ m}^2 = 5,2 \text{ m}^2$

Sirkulasi 100%

Total =  $10,4 \text{ m}^2$

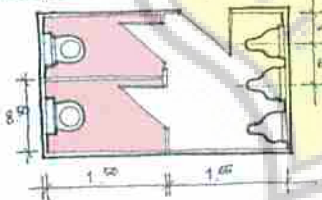
**36. Toilet Wanita (kapasitas 2 orang)**

Luas per unit :  $1,7 \times 2,65 = 4,61 \text{ m}^2$



**37. Toilet Pria (kapasitas 2 orang)**

Luas per unit :  $1,7 \times 3,15 = 5,355 \text{ m}^2$



**11) BALAI PENELITIAN ALOE POWDER**

**38. Ruang pemilihan bahan (kapasitas 3 orang)**

Property :

- Meja :  $(0,6 \times 1,2) \times 2 = 2,4 \text{ m}^2$
- Rak penyimpanan :  $(4 \times 0,8) \times 2 = 6,4 \text{ m}^2$
- Laminar air flow :  $1 \times 0,6 = 0,6 \text{ m}^2$
- Kursi :  $(0,45 \times 0,45) \times 2 = 0,4 \text{ m}^2$

Jumlah =  $9,8 \text{ m}^2$

Sirkulasi 100%

Total =  $19,6 \text{ m}^2$



**39. Ruang pencucian dan pengupasan**

Area cuci :  $1,2 \times 5 = 6\text{ m}^2$   
Mesin kupas :  $(1,5 \times 0,5) \times 2 = 3,75\text{ m}^2$

Jumlah =  $9,75\text{ m}^2$   
Sirkulasi 100%  
Total =  **$19,5\text{ m}^2$**

**40. Ruang penghancuran**

Mesin screw :  $0,9\text{ m} \times 0,6\text{ m} = 0,54\text{ m}^2$   
Total :  $0,54\text{ m}^2 \times 3 = 1,62\text{ m}^2$

Sirk. 100%  
Total =  **$3,24\text{ m}^2$**

**41. Ruang penyaringan**

Centrifugal separator :  $(1,5 \times 1,5) \times 2 = 4,5\text{ m}^2$   
Sirkulasi 100%  
Total :  **$9\text{ m}^2$**

**42. Ruang pemekatan**

Alat pemekat, rotavapor :  $(2 \times 0,8) \times 3 = 4,8\text{ m}^2$   
Sirkulasi 100%  
Total :  **$9,6\text{ m}^2$**

**43. Ruang pemngemasan**

Mesin pengemasan :  $(1,5 \times 0,8) \times 5 = 6\text{ m}^2$   
Rak penyimpanan :  $(4 \times 0,8) \times 2 = 6,4\text{ m}^2$

Jumlah =  $12,4\text{ m}^2$   
Sirkulasi 100%  
Total =  **$24,8\text{ m}^2$**

**44. Ruang pasteurisasi**

Mesin pasteurisasi :  $(2 \times 0,9) \times 3 = 5,4\text{ m}^2$   
Sirkulasi 100%  
Total =  **$10,8\text{ m}^2$**

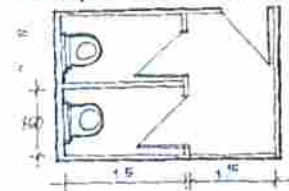
**45. Ruang pengeringan**

Mesin spray drier :  $3 \times 3 = 9\text{ m}^2$   
Mesin freez drier :  $(0,8 \times 0,8) \times 2 = 1,28\text{ m}^2$

Jumlah =  $10,28\text{ m}^2$   
Sirkulasi 100%  
Total =  **$20,56\text{ m}^2$**

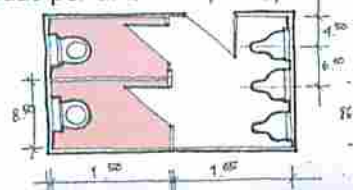
**46. Toilet Wanita (kapasitas 2 orang)**

Luas per unit :  $1,7 \times 2,65 = 4,61\text{ m}^2$



**47. Toilet Pria (kapasitas 2 orang)**

Luas per unit :  $1,7 \times 3,15 = 5,355\text{ m}^2$



LAMPIRAN

## 12) KANTOR PENGELOLA

### 48. Ruang Kepala (kapasitas 5 orang)

Properti ruang :

- |                      |                     |                       |
|----------------------|---------------------|-----------------------|
| a. Meja, Kursi kerja | : (2,00 x 1,70) x 2 | = 6,8 m <sup>2</sup>  |
| b. Lemari Arsip      | : 1,1 x 1           | = 1,1 m <sup>2</sup>  |
| c. Sofa dan Meja     | : 2 x 4             | = 8 m <sup>2</sup>    |
| d. Kursi Tamu        | : (0,6 x 0,7) x 6   | = 2,52 m <sup>2</sup> |

Jumlah = 15,08 m<sup>2</sup>  
Sirkulasi 20% = 3,016 m<sup>2</sup>  
Total = 18,096 m<sup>2</sup> ~ 20 m<sup>2</sup>

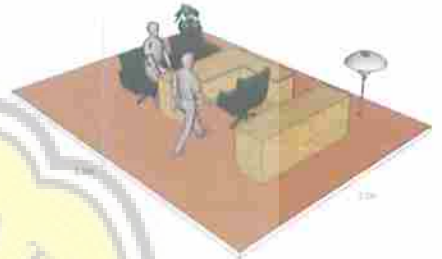


### 49. Ruang Sekretaris (kapasitas 3 orang)

Properti ruang :

- |                      |                   |                       |
|----------------------|-------------------|-----------------------|
| a. Meja, Kursi kerja | : 1,50 x 1,70     | = 2,55 m <sup>2</sup> |
| b. Lemari Arsip      | : 1,1 x 1         | = 1,1 m <sup>2</sup>  |
| c. Kursi Tamu        | : (0,6 x 0,7) x 2 | = 0,84 m <sup>2</sup> |

Jumlah = 4,49 m<sup>2</sup>  
Sirkulasi 30% = 1,347 m<sup>2</sup>  
Total = 5,837 m<sup>2</sup> ~ 6 m<sup>2</sup>

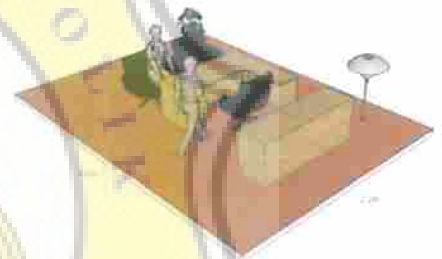


### 50. Ruang Bagian Umum (kapasitas 3 orang)

Properti ruang :

- |                      |                   |                       |
|----------------------|-------------------|-----------------------|
| a. Meja, Kursi kerja | : 1,50 x 1,70     | = 2,55 m <sup>2</sup> |
| b. Lemari Arsip      | : 1,1 x 1         | = 1,1 m <sup>2</sup>  |
| c. Kursi Tamu        | : (0,6 x 0,7) x 2 | = 0,84 m <sup>2</sup> |

Jumlah = 4,49 m<sup>2</sup>  
Sirkulasi 30% = 1,347 m<sup>2</sup>  
Total = 5,837 m<sup>2</sup> ~ 6 m<sup>2</sup>

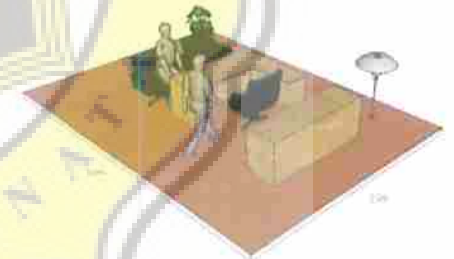


### 51. Ruang Bagian Maintenance (kapasitas 3 orang)

Properti ruang :

- |                      |                   |                       |
|----------------------|-------------------|-----------------------|
| a. Meja, Kursi kerja | : 1,50 x 1,70     | = 2,55 m <sup>2</sup> |
| b. Lemari Arsip      | : 1,1 x 1         | = 1,1 m <sup>2</sup>  |
| c. Kursi Tamu        | : (0,6 x 0,7) x 2 | = 0,84 m <sup>2</sup> |

Jumlah = 4,49 m<sup>2</sup>  
Sirkulasi 30% = 1,347 m<sup>2</sup>  
Total = 5,837 m<sup>2</sup> ~ 6 m<sup>2</sup>



### 52. Ruang Bagian Humas (kapasitas 3 orang)

Properti ruang :

- |                      |                   |                       |
|----------------------|-------------------|-----------------------|
| a. Meja, Kursi kerja | : 1,50 x 1,70     | = 2,55 m <sup>2</sup> |
| b. Lemari Arsip      | : 1,1 x 1         | = 1,1 m <sup>2</sup>  |
| c. Kursi Tamu        | : (0,6 x 0,7) x 2 | = 0,84 m <sup>2</sup> |

Jumlah = 4,49 m<sup>2</sup>  
Sirkulasi 30% = 1,347 m<sup>2</sup>  
Total = 5,837 m<sup>2</sup> ~ 6 m<sup>2</sup>

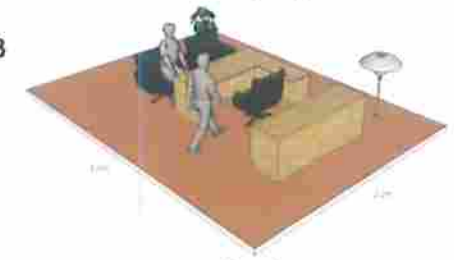


### 53. Ruang Kepala Divisi Masing-Masing Bagian (kapasitas 3)

Properti ruang :

- |                      |                   |                       |
|----------------------|-------------------|-----------------------|
| a. Meja, Kursi kerja | : 1,50 x 1,70     | = 2,55 m <sup>2</sup> |
| b. Lemari Arsip      | : 1,1 x 1         | = 1,1 m <sup>2</sup>  |
| c. Kursi Tamu        | : (0,6 x 0,7) x 2 | = 0,84 m <sup>2</sup> |

Jumlah = 4,49 m<sup>2</sup>  
Sirkulasi 30% = 1,347 m<sup>2</sup>



Total =  $5,837 \text{ m}^2 \sim 6 \text{ m}^2$

#### 54. Ruang Rapat

Kapasitas/unit : 10 orang  
Luas per unit :  $3,1 \times 7,1 \text{ m}^2 = 22,01 \text{ m}^2$   
Jumlah =  $22,01 \text{ m}^2$   
Sirkulasi 40% =  $8,804 \text{ m}^2$   
Total =  $30,814 \text{ m}^2 \sim 31 \text{ m}^2$

#### 55. Ruang Karyawan (kapasitas 5 orang)

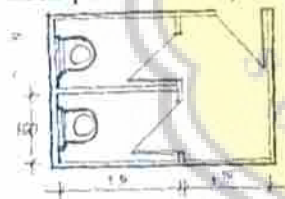
Properti ruang :  
a. Meja TV :  $1,60 \times 0,8 = 1,28 \text{ m}^2$   
b. Kursi Panjang :  $(2 \times 0,8) \times 2 = 3,2 \text{ m}^2$   
c. Meja :  $1,2 \times 0,6 = 0,72 \text{ m}^2$   
Jumlah =  $5,20 \text{ m}^2$   
Sirkulasi 50% =  $2,60 \text{ m}^2$   
Total =  $7,80 \text{ m}^2 \sim 8 \text{ m}^2$

#### 56. Ruang Pantry (kapasitas 3 orang)

Properti ruang :  
a. Perabot Pantry :  $2,50 \times 3,50 = 8,75 \text{ m}^2$   
b. Sirkulasi per orang :  $1 \times 10 = 10 \text{ m}^2$   
Jumlah =  $18,75 \text{ m}^2$   
Sirkulasi 30% =  $5,625 \text{ m}^2$   
Total =  $24,375 \text{ m}^2 \sim 25 \text{ m}^2$

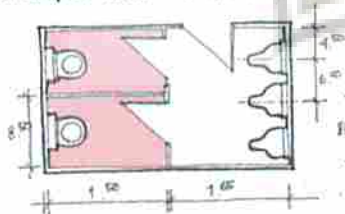
#### 57. Toilet Wanita (kapasitas 2 orang)

Luas per unit :  $1,7 \times 2,65 = 4,61 \text{ m}^2$



#### 58. Toilet Pria (kapasitas 2 orang)

Luas per unit :  $1,7 \times 3,15 = 5,355 \text{ m}^2$



### 13) POS KEAMANAN

#### 59. Ruang Keamanan pusat (kapasitas 3 orang)

Properti ruang :  
a. Meja, Kursi kerja :  $1,5 \times 1,70 = 2,55 \text{ m}^2$   
b. Lemari Arsip :  $1,1 \times 1 = 1,1 \text{ m}^2$   
c. Kursi Tamu :  $(0,6 \times 0,7) \times 2 = 0,84 \text{ m}^2$   
Jumlah =  $4,49 \text{ m}^2$   
Sirkulasi 30% =  $1,347 \text{ m}^2$   
Total =  $5,837 \text{ m}^2 \sim 6 \text{ m}^2$



60. **Pos CCTV**

Standart luasan ruang:  $6,00 \times 4,00 = 24 \text{ m}^2$

61. **Pos Keamanan Umum**

Standart luasan ruang:  $(2,50 \times 2,50) \times 2 = 12,5 \text{ m}^2$

14) **FASILITAS MUSHOLLA**

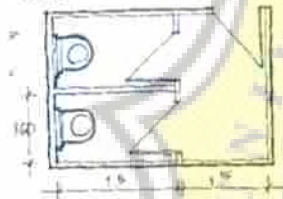
Standart luasan ruang Salat =  $40 \text{ m}^2$   
Standart luasan ruang Wudhu =  $10,5 \text{ m}^2$

Jumlah =  $50,5 \text{ m}^2$   
Sirkulasi 50% =  $25,25 \text{ m}^2$   
Total =  $75,75 \text{ m}^2 \sim 76 \text{ m}^2$

15) **FASILITAS SERVIS UMUM**

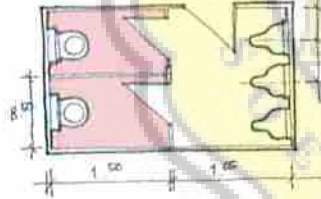
62. **Toilet Wanita (kapasitas 2 orang)**

Luas per unit :  $1,7 \times 2,65 = 4,61 \text{ m}^2$   
Luas :  $4,61 \times 4 = 18,02 \text{ m}^2$



63. **Toilet Pria (kapasitas 2 orang)**

Luas per unit :  $1,7 \times 3,15 = 5,355 \text{ m}^2$   
Luas :  $5,355 \times 4 = 21,42 \text{ m}^2$



64. Standart Luasan Ruang Genset =  $9,00 \text{ m}^2$

65. Standart Luasan Ruang Pompa =  $9,00 \text{ m}^2$

66. Standart Luasan Ruang Panel =  $9,00 \text{ m}^2$

67. Standart Luasan Ruang Gudang Alat =  $18,00 \text{ m}^2$

68. Standart Luasan Ruang Cleaning Service =  $18 \text{ m}^2$

16) **FASILITAS PERKEMBANGAN LIDAH BUAYA**

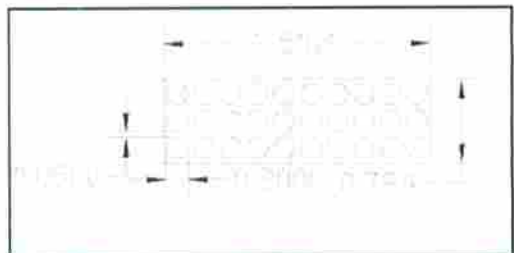
69. **Green house**

Luas green house :

$(2,5 \times 0,8) \times 9 = 18 \text{ m}^2$

Sirkulasi 200% =  $36 \text{ m}^2$

Total :  $54 \text{ m}^2$

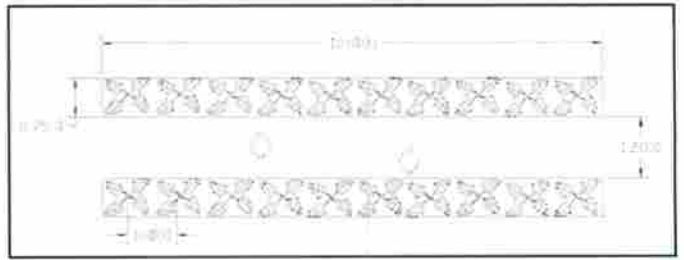




## 70. Lahan perkebunan lidah buaya

Luas lahan sebagai lahan tanam lidah buaya adalah 2 ha. = 20.000m<sup>2</sup>.

(Populasi : 8. 000 Pohon/Ha)



## 17) FASILITAS GAZEBO

Property :  
Kursi+meja taman :  $(1,25 \times 1,25) \times 6 = 9,375 \text{ m}^2$

Jumlah = 9,375 m<sup>2</sup>  
Sirkulasi 200% = 18,75 m<sup>2</sup>  
Total = 28,125 m<sup>2</sup> ~ 29 m<sup>2</sup>



## 18) FASILITAS PLAYGROUND

Property :  
Ayunan :  $(0,8 \times 2) \times 4 \text{ unit} = 6,4 \text{ m}^2$   
Jungkat-jungkit :  $((2,5 \times 0,8) \times 2 = 4 \text{ m}^2$   
Sarang laba-laba :  $2 \times 2 = 4 \text{ m}^2$

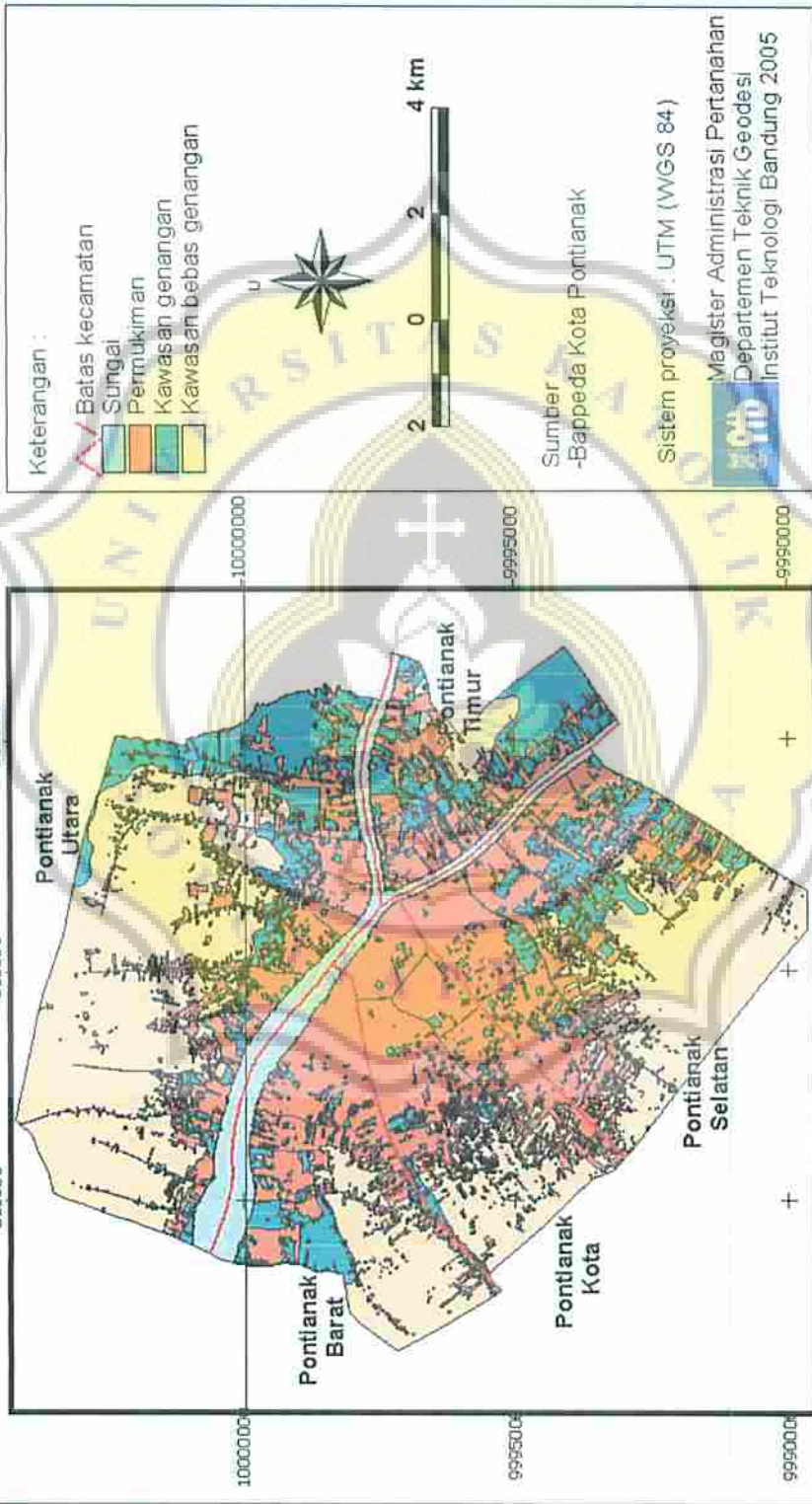
Jumlah = 14,4 m<sup>2</sup>  
Sirkulasi 200% = 28,8 m<sup>2</sup>  
Total = 43,2 m<sup>2</sup> ~ 43 m<sup>2</sup>





# ILUSTRASI SEBARAN PERMUKIMAN DI KAWASAN GENANGAN

## Ilustrasi Sebaran Permukiman Di Kawasan Genangan





# PETA TATA RUANG INVESTASI KOTA PONTIANAK

