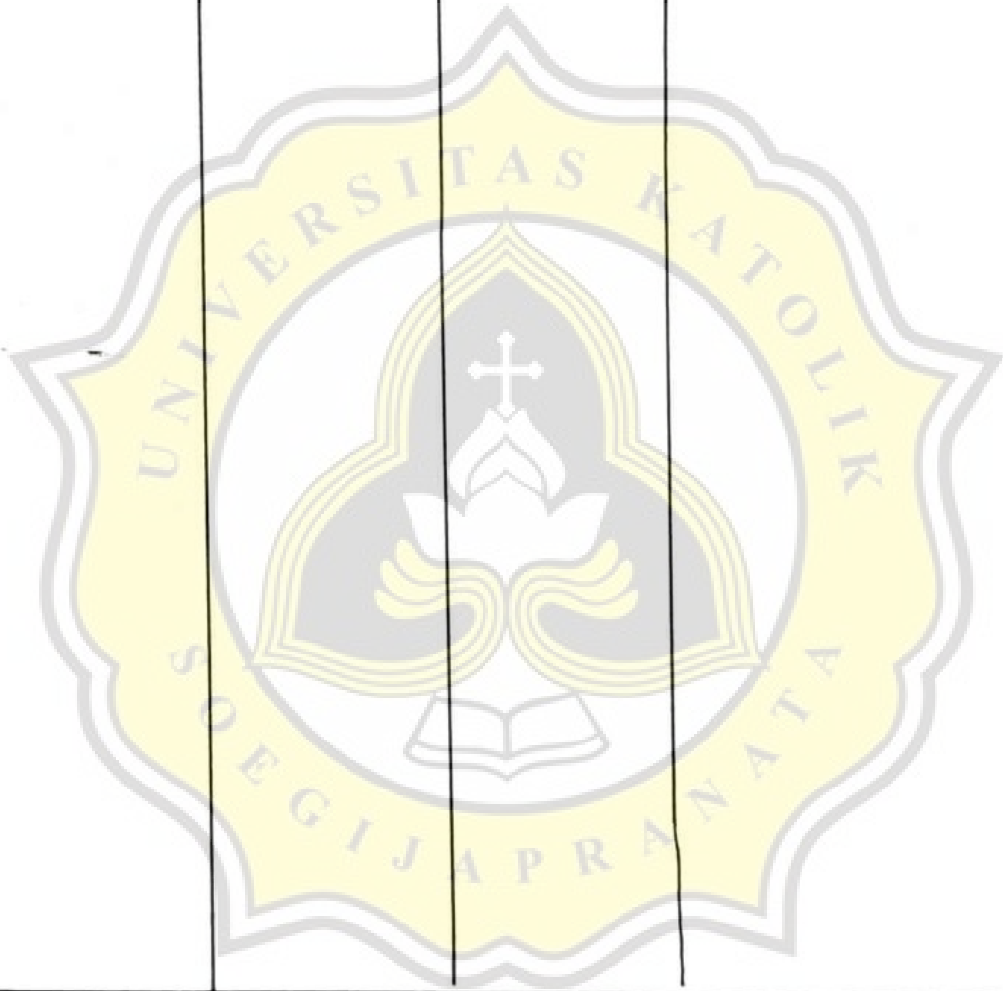


## LAMPIRAN

No	Segmen	B	H	m	I	A	P	R	V	Q	Penampang
		(m)	(m)	1/(Vert:Hor)	$\Delta H/P$	$(b+(m \cdot h)) \cdot h$	$b+(2 \cdot h(1+m^2)^{1/2})$	A/P	$1/n \cdot R^{(2/3)} \cdot I^{(1/2)}$	A $\cdot$ V	
1	Kadipiro	5,00	3,75	1,000	0,0013	32,81	20,00	1,641	1,343	44,08	Trapeسيوم
2	Banyuanyar	5,00	3,51	1,000	0,0019	29,93	19,06	1,570	1,473	44,08	Trapeسيوم
3	Sumber	15,00	1,61	0,442	0,0056	25,38	19,66	1,291	1,737	44,08	Trapeسيوم
4	Nusukan	35,00	1,46	1,558	0,0013	54,31	42,45	1,279	0,812	44,08	Trapeسيوم
5	Manahan	9,00	1,71	0,625	0,0066	17,24	14,56	1,184	3,033	52,30	Trapeسيوم
6	Mangkubumen	9,00	3,00	0,625	0,0011	32,63	18,75	1,740	1,603	52,30	Trapeسيوم
7	Gilingan	9,00	2,98	0,625	0,0011	32,35	18,68	1,732	1,616	52,30	Trapeسيوم
8	Punggawan	9,00	3,00	0,625	0,0011	32,63	18,75	1,740	1,603	52,30	Trapeسيوم
9	Kestalan	16,00	1,44	0,227	0,0035	23,45	19,53	1,201	2,230	52,30	Trapeسيوم
10	Ketelan	16,00	1,36	0,227	0,0041	22,21	19,34	1,148	2,355	52,30	Trapeسيوم
11	Setabelan	10,00	2,57	0,250	0,0017	27,39	16,43	1,667	1,910	52,30	Trapeسيوم
12	Keprabon	10,00	2,35	0,250	0,0022	24,88	15,88	1,567	2,102	52,30	Trapeسيوم
13	Kepatihan wetan	9,00	2,34	0,200	0,0029	22,17	14,62	1,517	2,359	52,30	Trapeسيوم
14	kepatihan kulon	10,00	2,00	0,200	0,0036	20,81	14,80	1,406	2,513	52,30	Trapeسيوم
15	Kampung baru	9,00	1,77	0,200	0,0067	16,56	13,25	1,250	3,158	52,30	Trapeسيوم
16	Sudiroprajan	15,00	1,86	1,000	0,0016	31,39	22,45	1,398	1,666	52,30	Trapeسيوم
17	kedung lumbu	12,00	1,75	0,941	0,0032	23,83	18,78	1,269	2,195	52,30	Trapeسيوم
18	gandekan	25,00	1,05	0,556	0,0036	26,90	28,27	0,952	1,944	52,30	Trapeسيوم
19	sewu	8,00	2,94	0,600	0,0015	28,67	17,40	1,648	1,824	52,30	Trapeسيوم
20	Sangkrah	25,00	1,31	0,556	0,0018	33,70	29,07	1,159	1,552	52,30	Trapeسيوم

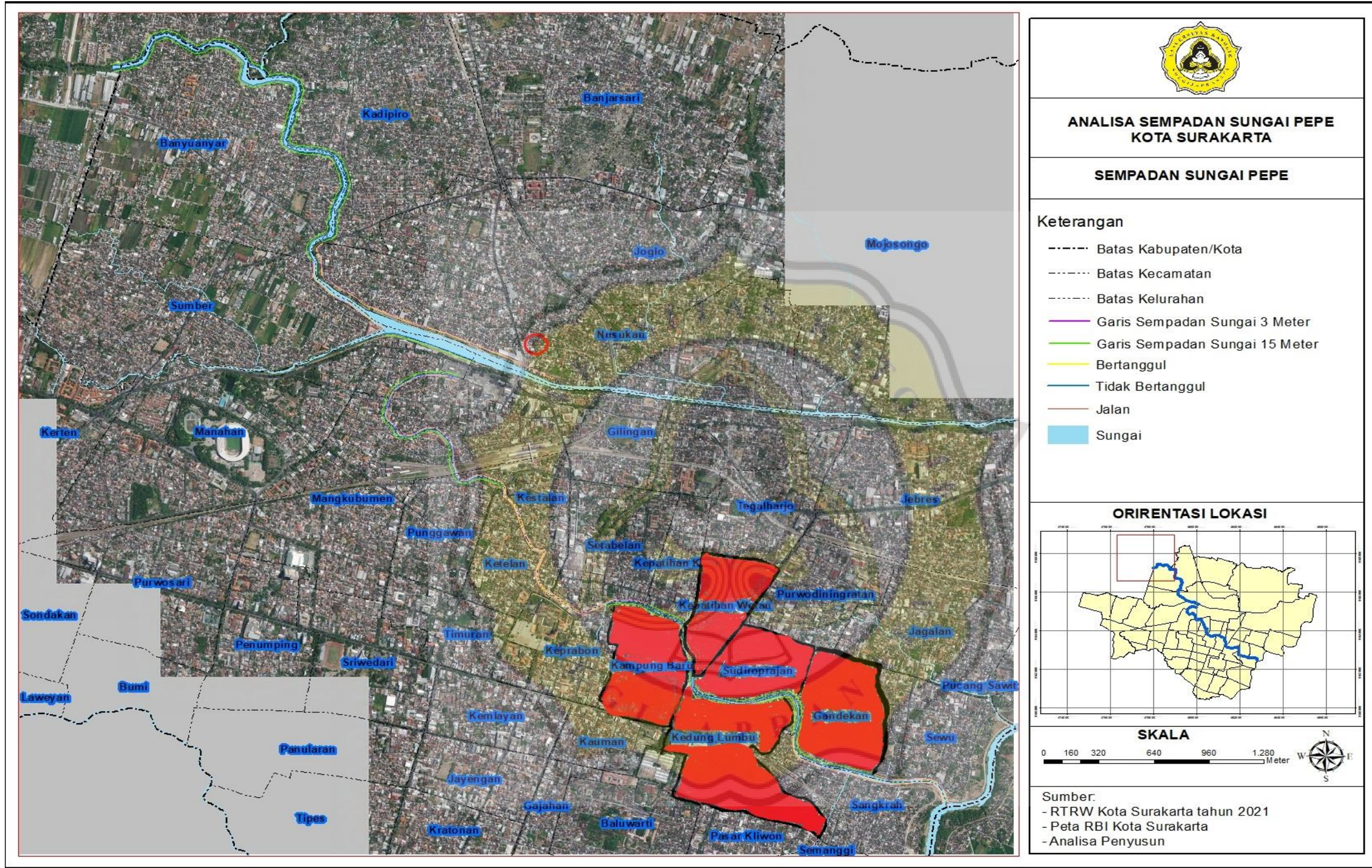
L-01 Hasil Perhitungan Kapasitas Debit Air 20 Kelurahan

No	Nama	kelurahan	Durasi Tinggal	Tanya dan Jawab
1				



L-03 Formulir Survei Lapangan





L-03 Zona-Zona Kelurahan Yang Melanggar Aturan (merah) dan Sesuai Peraturan



PAPER NAME

**TUGAS AKHIR SATRIA DINDA PRADANA**  
**15B10035.docx**

---

WORD COUNT

**8573 Words**

CHARACTER COUNT

**50099 Characters**

PAGE COUNT

**75 Pages**

FILE SIZE

**670.4KB**

SUBMISSION DATE

**Mar 24, 2023 5:01 PM GMT+7**

REPORT DATE

**Mar 24, 2023 5:02 PM GMT+7**

---

● **19% Overall Similarity**

The combined total of all matches, including overlapping sources, for each database.

- 16% Internet database
- Crossref database
- 13% Submitted Works database
- 4% Publications database
- Crossref Posted Content database

● **Excluded from Similarity Report**

- Bibliographic material
- Cited material
- Manually excluded text blocks
- Quoted material
- Small Matches (Less than 10 words)