

PAPER NAME

Inovasi dalam Arsitektur.pptx

WORD COUNT

160 Words

CHARACTER COUNT

1069 Characters

PAGE COUNT

18 Pages

FILE SIZE

6.3MB

SUBMISSION DATE

May 2, 2023 5:06 PM GMT+7

REPORT DATE

May 2, 2023 5:06 PM GMT+7

● 15% Overall Similarity

The combined total of all matches, including overlapping sources, for each database.

- 7% Internet database
- 15% Submitted Works database
- 0% Publications database

● Excluded from Similarity Report

- Crossref database
- Bibliographic material
- Small Matches (Less than 10 words)
- Crossref Posted Content database
- Quoted material

Innovation in Architecture

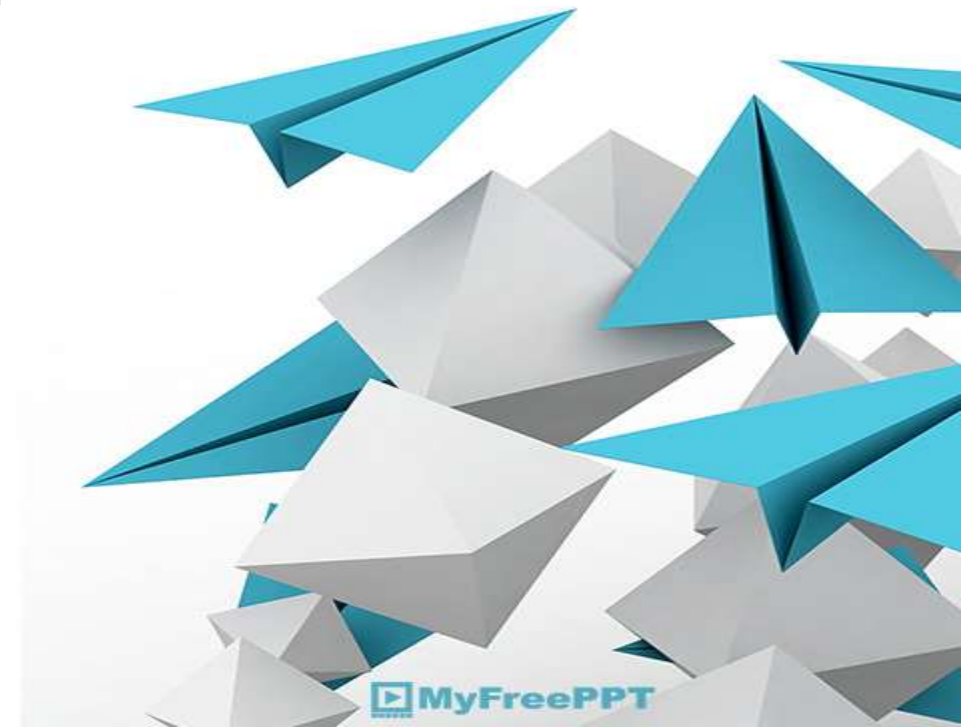
LMF Purwanto

Presented in the Vista 4th National Seminar

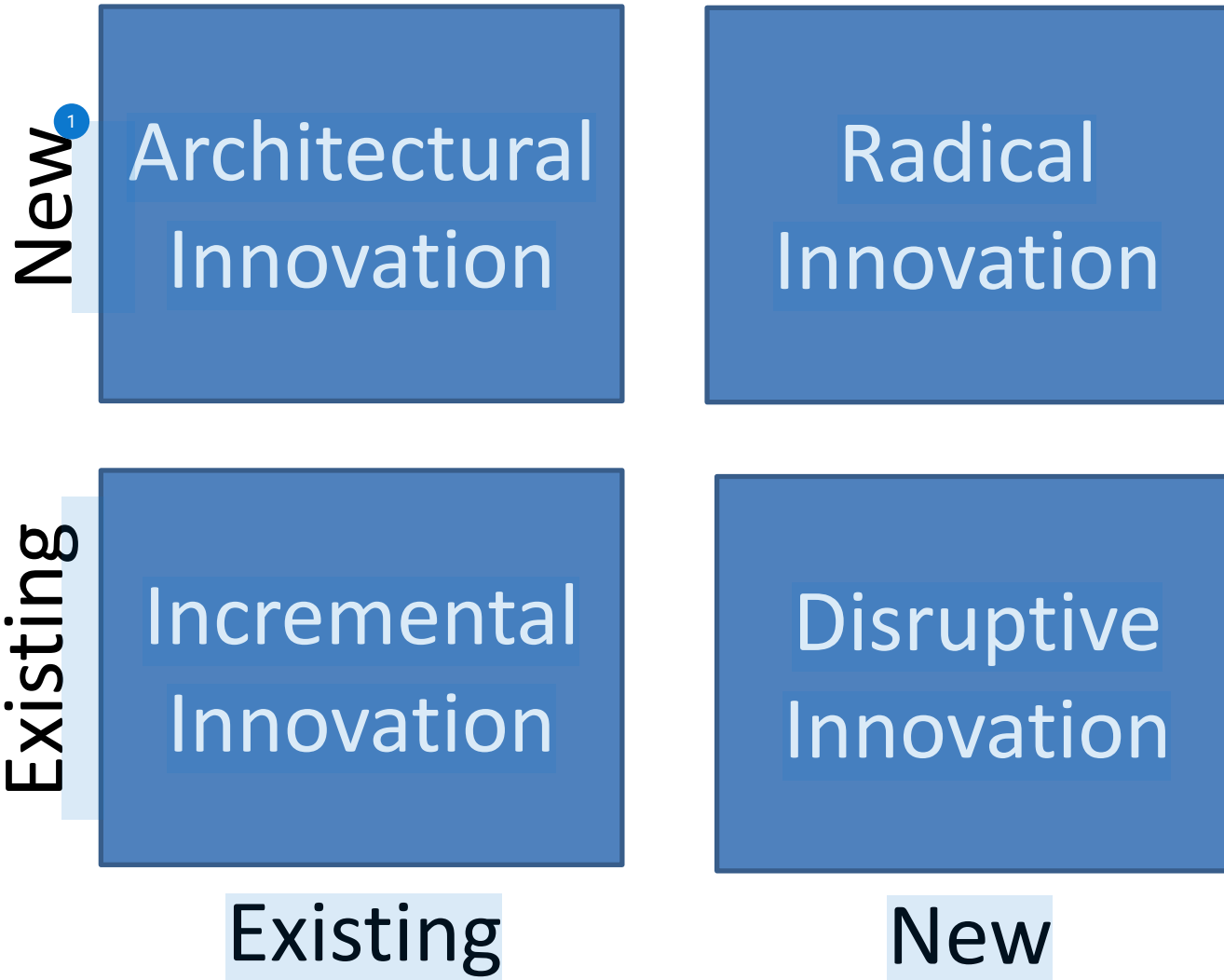
February 17, 2023

²Innovation

- Innovation must ensure that architecture is **constantly evolving – functionally and aesthetically.**



Market



Technology

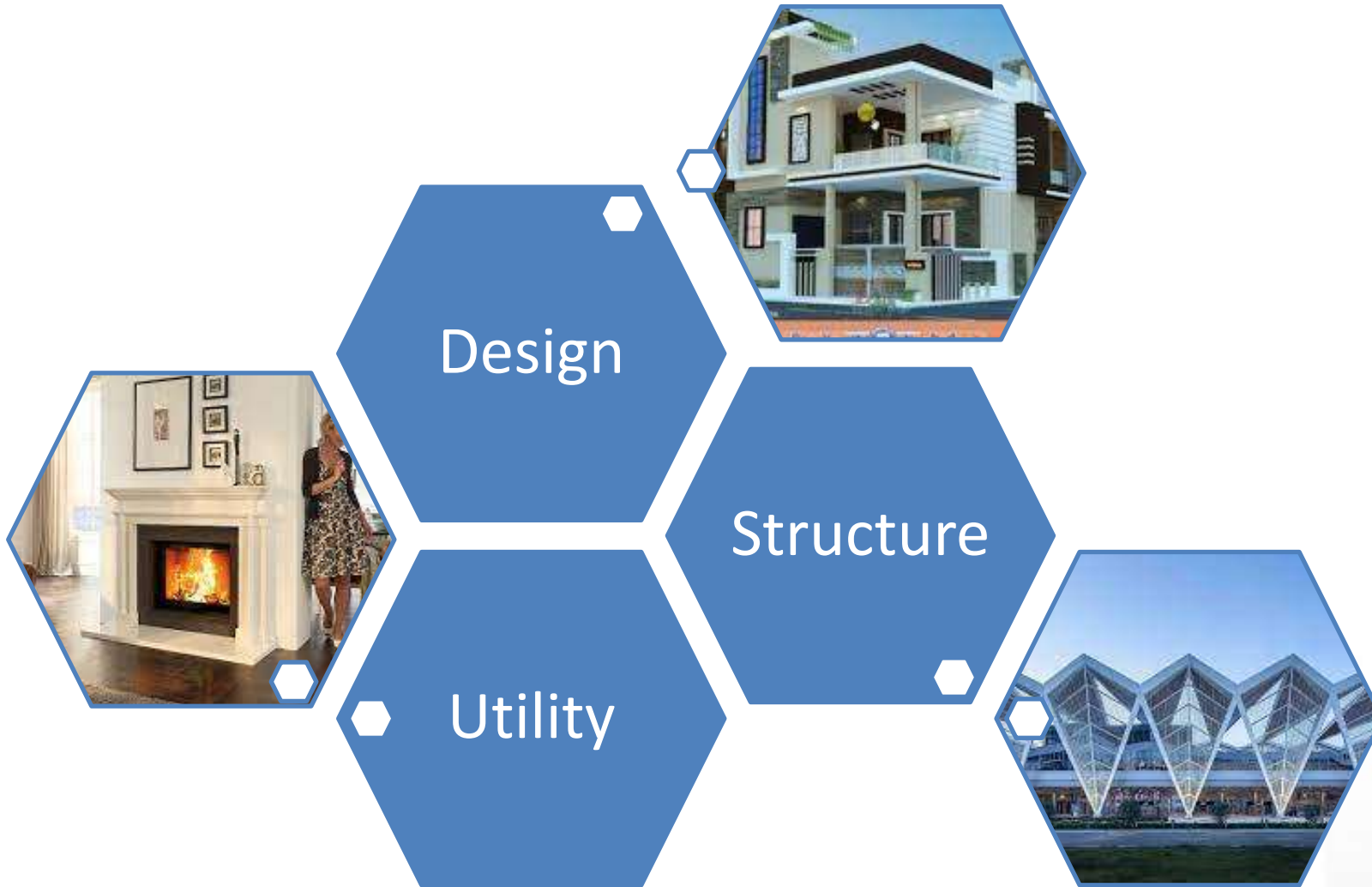


Architectural Design

- need a strong concept
- understanding of climate, culture and values

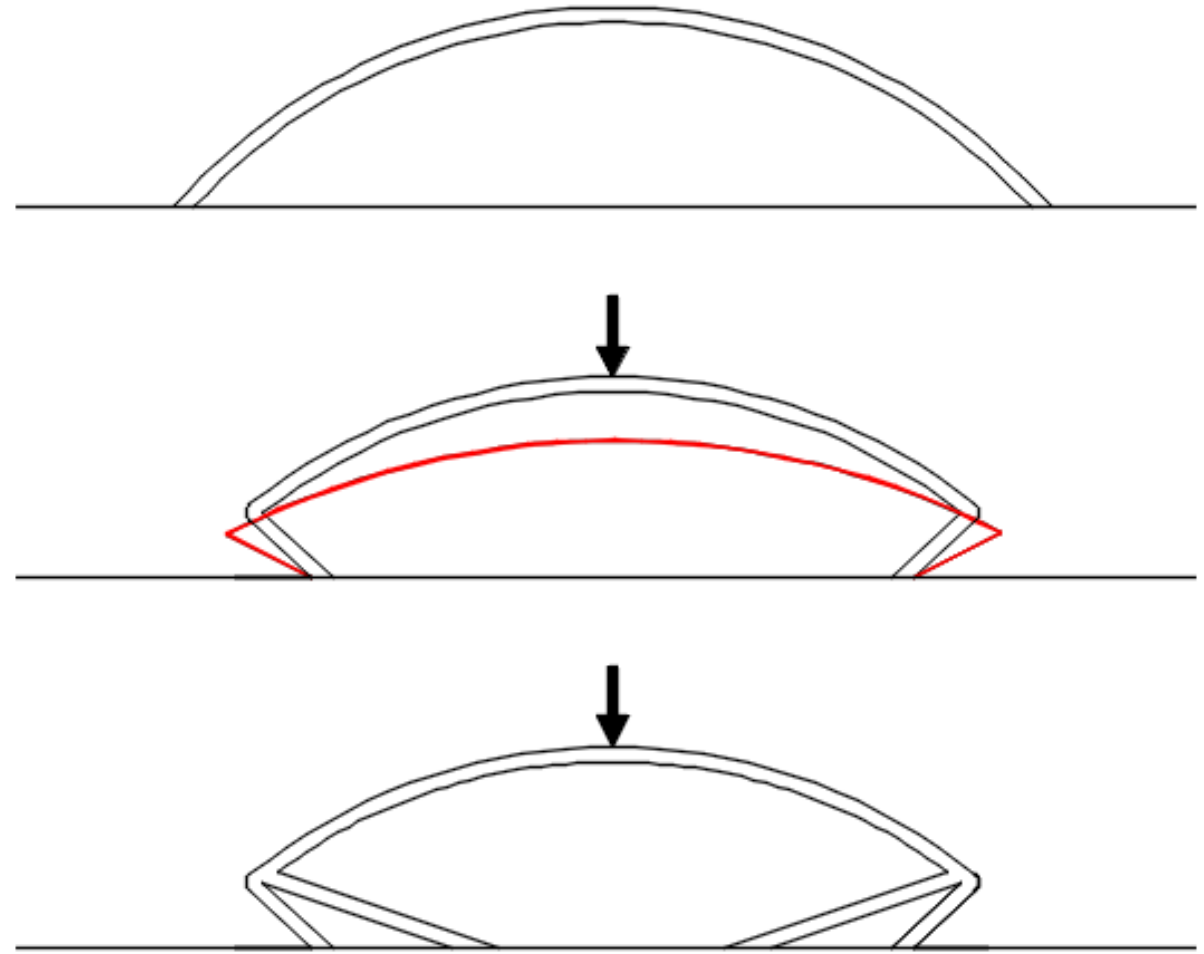


INNOVATION IN BUILDING



UNDERSTAND THE PRINCIPLES

- Concept of Structure

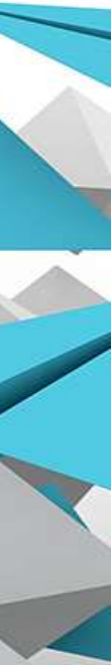




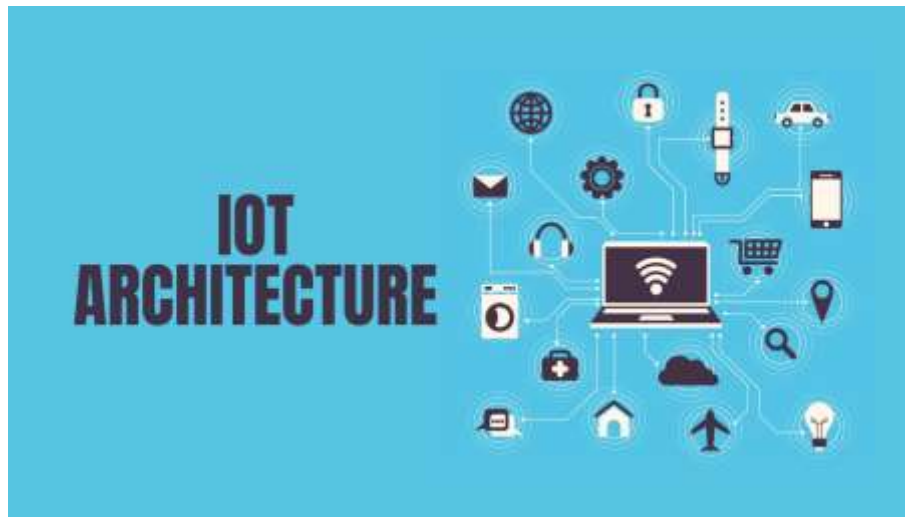
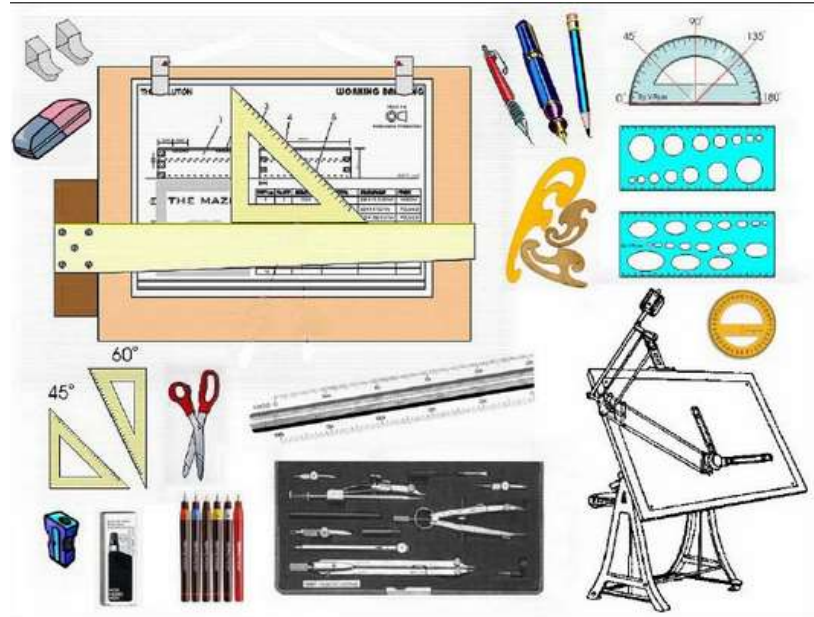
Gustav-Heinemann- Brücke, Berlin



Heating Technology



Additive and subtractive in learning



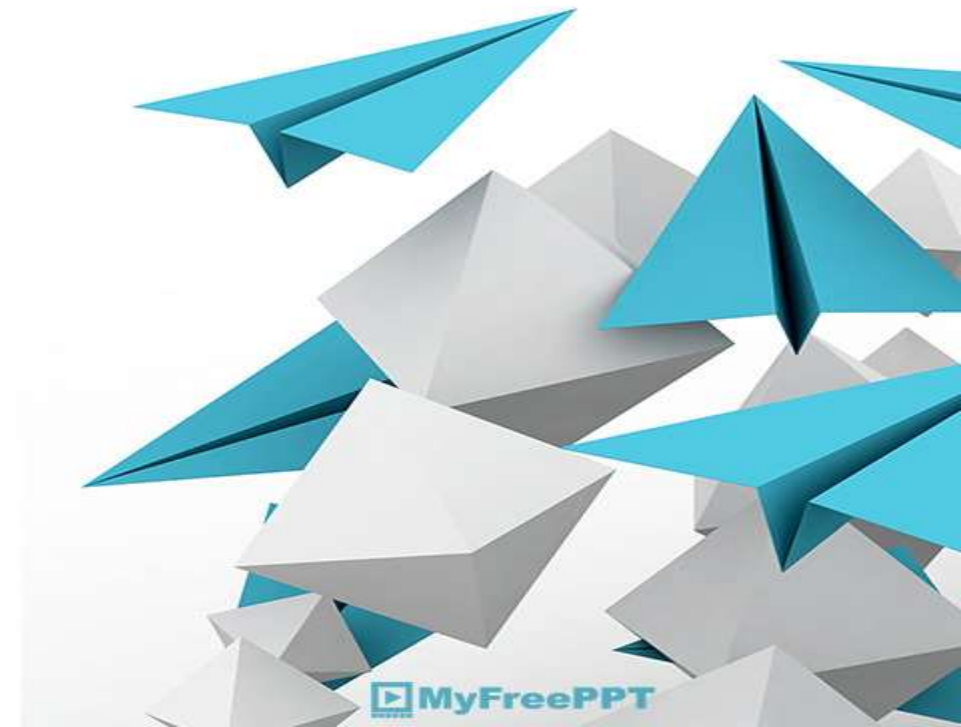
How to enter the world of innovation quickly

- **Foster a Curious Mindset**
- **Create a Culture of Curiosity and Creativity.**
- **Invest in Innovation to be Future-Proof**



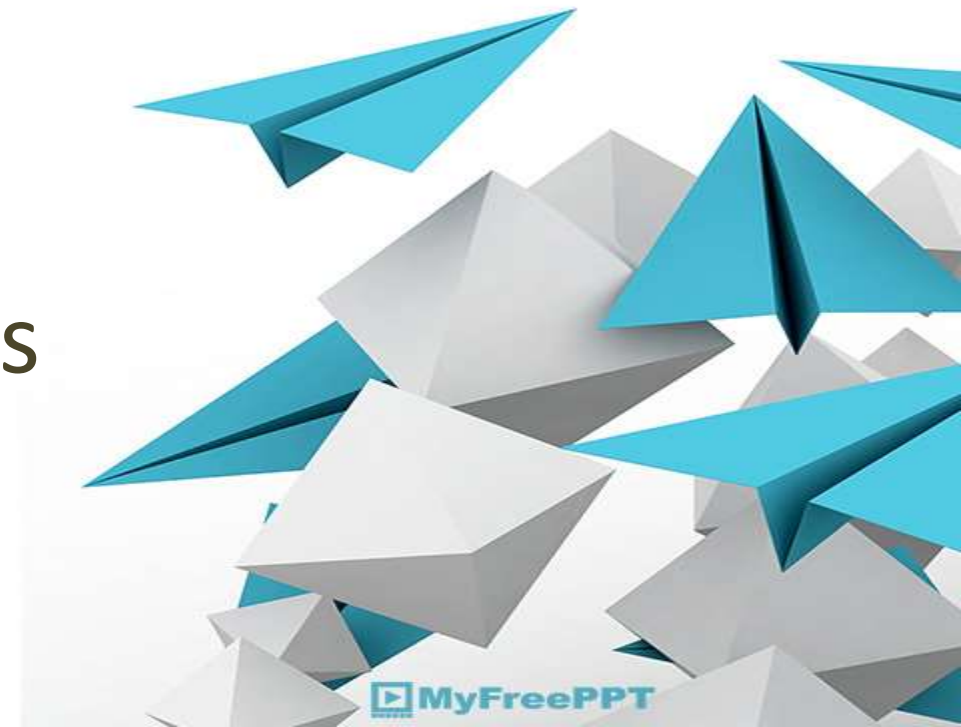
Digital architecture as a way of incorporating innovative designs

- quickly mastered technology
- upgrade software capabilities on a regular basis



What is Digital Architecture?

- Digital architecture is not only mastery of software but involves design methods, technology, building materials, artificial intelligence and the entire design and development process



Determination of new building materials



Emergence of new forms



New research opportunities

The screenshot displays the HTflux software interface. The main window shows a cross-section of a roof structure with a temperature gradient. A color scale at the top indicates temperatures from 10°C (blue) to 35°C (red). The interface includes a ribbon menu with tabs for FILE, START, DRAW, MEASUREMENTS, and OUTPUT TOOLS. The MEASUREMENTS tab is active, showing options for Temp., Heat flux, Humidity, Vapor flux, and Partial pressure. The SIMULATION tab is also visible, with options for steady state simulation, dynamic simulation, and GLASER 2D. On the right side, there are panels for Project materials, Project manager, and a list of regions and objects. The Project materials panel lists various materials such as Klima außen, Beton armiert, Mauerwerk, Dämmung, Aussenputz, Innenputz, Cement screed, Trittschalldämm, Randdämmstr, Air, Gypsum (1500), Roof tile (clay), and Wood 700 kg/. The Project manager panel shows a list of regions and objects, including REGION-1 and Ebene1. The bottom of the screen shows the Windows taskbar with the search bar and system tray.

HTflux - Unnamed

FILE | START | DRAW | MEASUREMENTS | OUTPUT TOOLS

Select | Pan | Zoom All | Wireframe | Materials | Objects | Temp. | Heat flux | Humidity | Vapor flux | Partial pressure | Import | Materials | Boundaries | Transfers | steady state simulation | dynamic simulation | GLASER 2D | Water vapor diffusion

Temperature: 10 15 20 25 30 35 °C

Project materials

- Klima außen: 35,0°C R0,04 80%
- Beton armiert
- Mauerwerk
- Dämmung
- Aussenputz
- Innenputz
- Cement screed
- Trittschalldämm
- Randdämmstr
- Air
- Gypsum (1500)
- Roof tile (clay)
- Wood 700 kg/

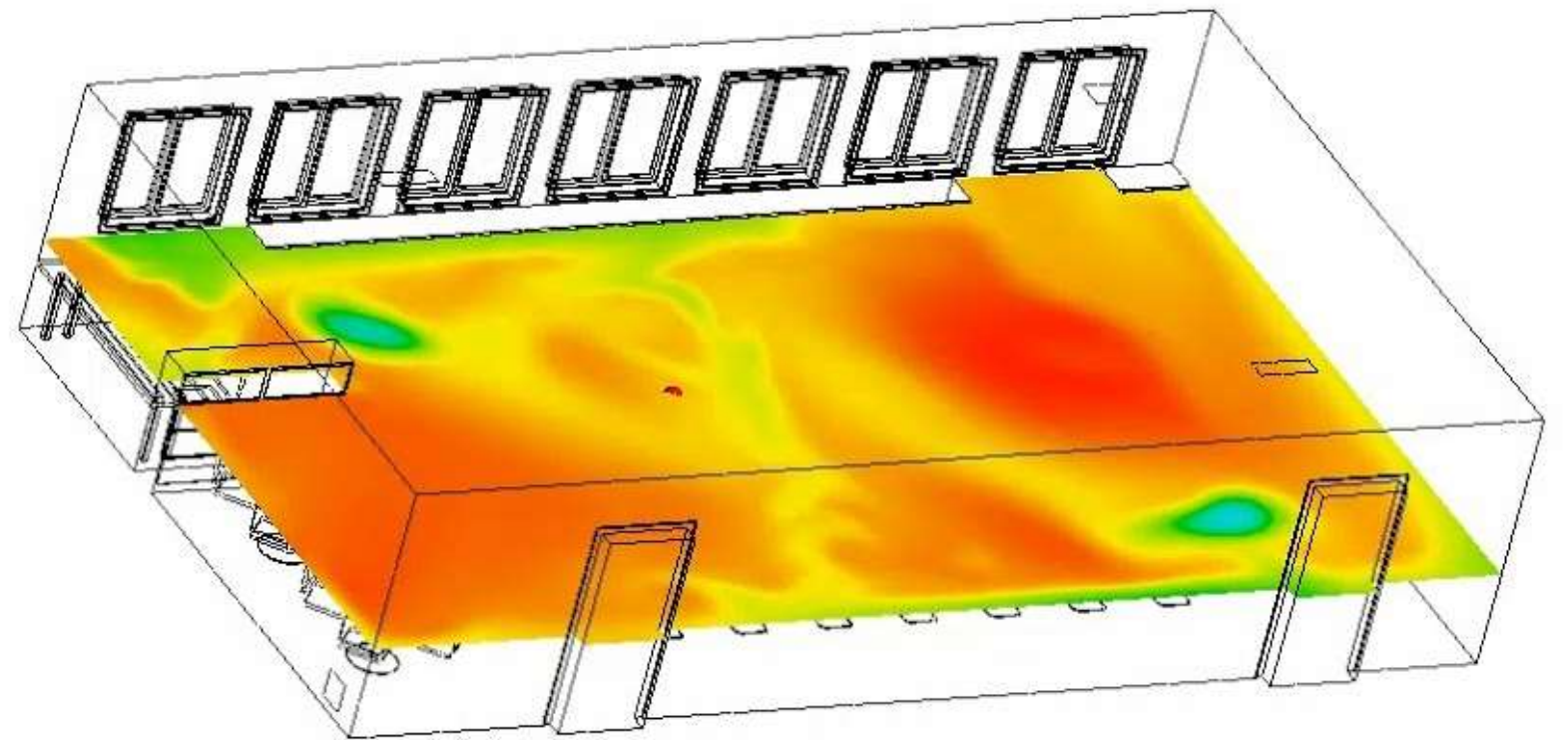
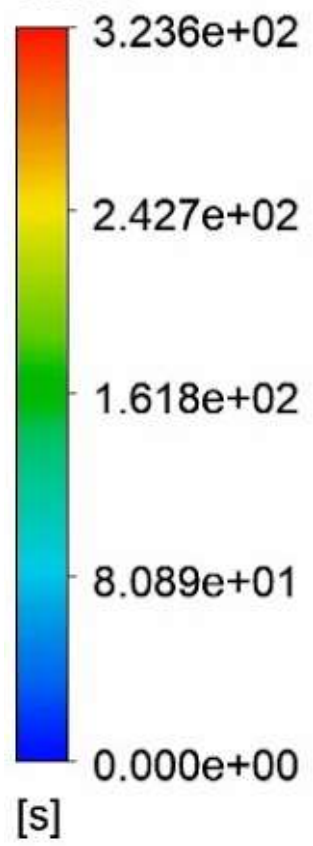
Project manager

- REGIONS
- REGION-1
- MEASUREMENTS
- MEASUREMENTS
- OBJECTS
- Ebene1
- DXF-OBJECTS
- 0.1
- 0.2
- 0.3
- 0.4
- 0.5
- 0.6
- 0.7
- 0.8
- 0.9
- 0.10
- 0.11

Display settings

Type here to search

10:31 08/06/2021



Thank You



● 15% Overall Similarity

Top sources found in the following databases:

- 7% Internet database
- 0% Publications database
- 15% Submitted Works database

TOP SOURCES

The sources with the highest number of matches within the submission. Overlapping sources will not be displayed.

1	Georgia Institute of Technology Main Campus on 2021-10-06	8%
	Submitted works	
2	King's Own Institute on 2022-12-26	7%
	Submitted works	