

Education and Local Wisdom in the Poverty Alleviation Framework: The Basic of Self-Help Model for Empowering the Poor.

KEYNOTE SPEECH

PRESENTED ON 2014 4th INTERNATIONAL CONFERENCE ON
ECONOMICS, TRADE AND DEVELOPMENT

March 12-14, 2014 Penang Malaysia

OUTLINE

- **INTRODUCTION**
- **GLOBAL POVERTY**
- **POVERTY IN INDONESIA**
- **POVERTY ALLEVIATION PROGRAMS IN INDONESIA**
- **THE ROLE OF EDUCATION AND LOCAL WISDOM IN ALLEVIATING POVERTY**
 - ❖ **THE ROLE OF EDUCATION**
 - ❖ **THE ROLE OF LOCAL WISDOM**
- **END NOTES**

INTRODUCTION

- Welfare can be associated with fishes in the sea..."*there are plenty of fishes in the sea*". Everybody can have it for free, and so does the welfare.



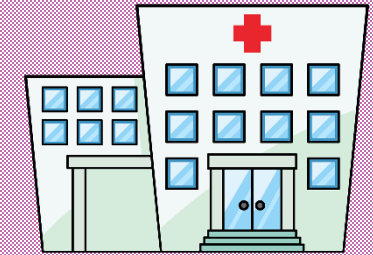
http://3.bp.blogspot.com/_R2c3tEWZB-U/Ukch-IOsivi/AAAAAAAAALQ/ZTABihTNVWk/s1600/mancing.jpg

INTRODUCTIONcont'd

WELFARE?

According to dictionary, WELFARE → **SAFE,**
NO WORRY AND PROSPERITY

In Indonesia →
Person is considered wealthy if he/she is able
to fulfill the 6 basic needs.



GLOBAL POVERTY

Nowadays, the poverty are becoming more crucial due its consequences

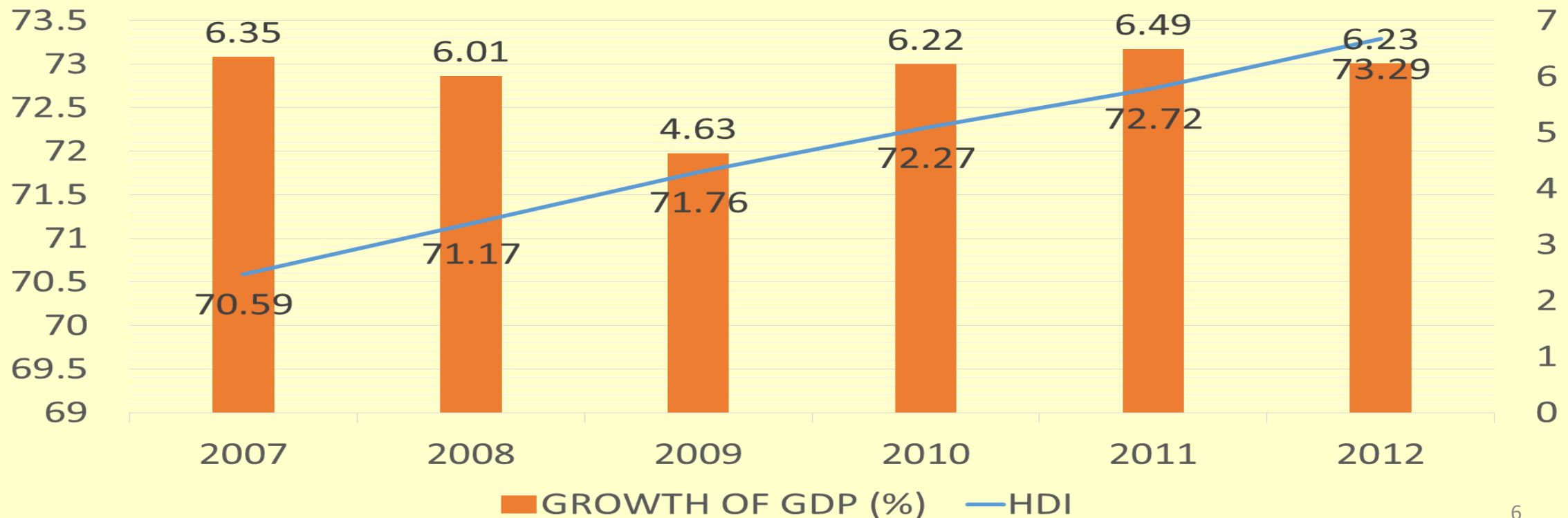
[MILLENIUM DEVELOPMENT GOALS-GOAL 1](#) COURTSY OF YOUTUBE

World Poverty Statistics

World Population that lives on less than \$2.50 a day	50% (3 Billion)
Total Number of children that die each day due to Poverty	22,000

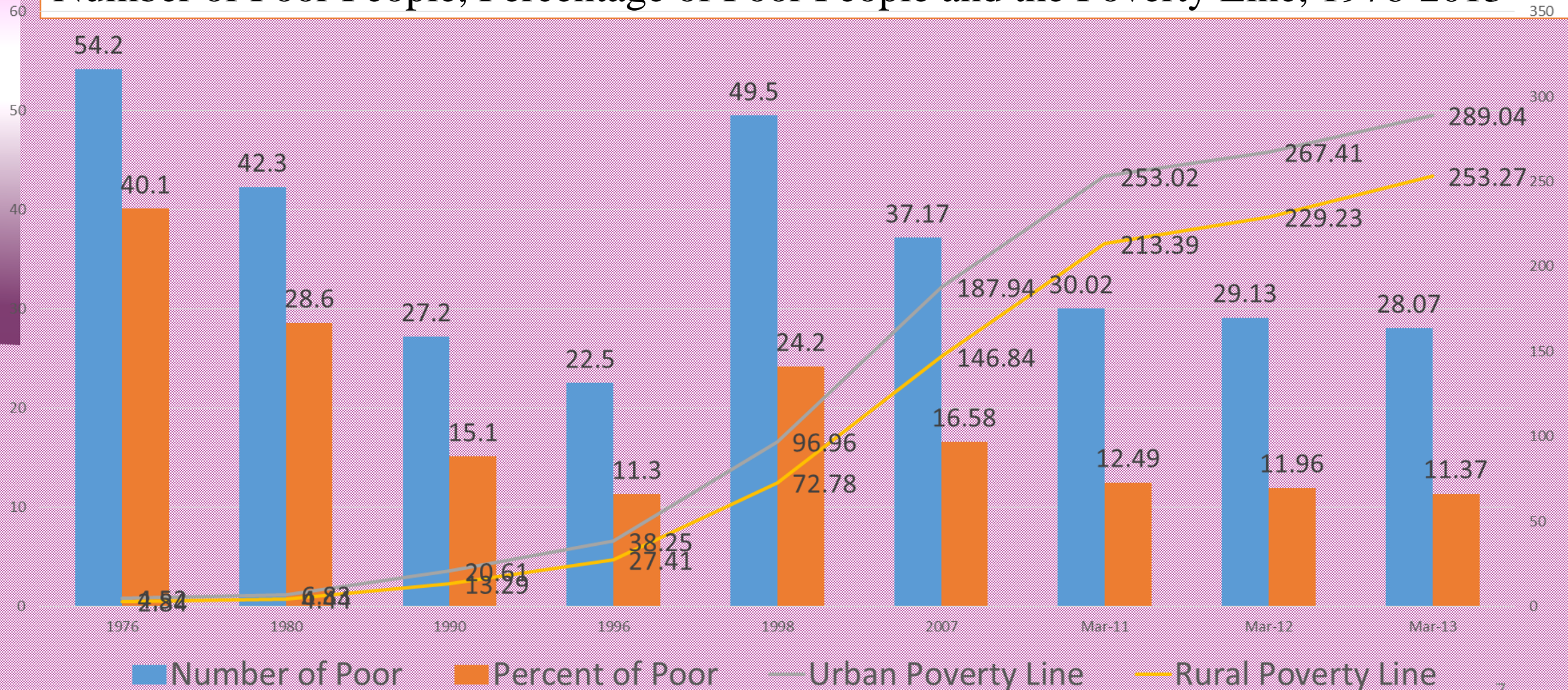
Nationally, there are some indicators to reflect the welfare increase. It can be seen in Gross Domestic Product (GDP), Human Development Index (HDI), and level of poverty.

Growth rate of GDP and Human Development Index Periode 2007-2012



POVERTY IN INDONESIA..... cont'd

Number of Poor People, Percentage of Poor People and the Poverty Line, 1976-2013



POVERTY ALLEVIATION PROGRAMS IN INDONESIA

Poverty Alleviation Programs in Indonesia

- The program for under-developed areas
- Regional program to overcome the impact of economic crisis) which is followed by urban poverty eradication program, district-level program and urban poor (with World Bank),
- Farm Credit Services,
- Rice for the poor program,
- Social safety net program,

POVERTY ALLEVIATION PROGRAMS IN INDONESIA... cont'd

Poverty Alleviation Programs in Indonesia

- Low-income family card,
- Scholarship for the poor,
- Micro credit,
- Unconditional cash Transfer,
- national program of community empowerment and others.

IN FACT THAT HAPPENING.....

Abu Huraerah, (2006) → The poverty alleviation model tends to be INITIATED BY GOVERNMENT, PUT "THE POOR" AS THE OBJECT, MOST OFTEN ASSOCIATED WITH THE INABILITY ECONOMICALLY AND CHARITY → Old paradigm

I'M FROM THE
GOVERNMENT,
I'M HERE
TO HELP



dauidsincan.blogspot.com

Suharto (2003) → Poverty alleviation should EMPHASIZE ON "WHAT THE POOR PEOPLE" INSTEAD OF "WHAT IS NOT OWNED BY THE POOR, MULTIDIMENSIONAL, ENHANCE PRODUCTIVITY, ENGAGE THE POOR AS SUBJECTS AND EMPOWERING. → New Paradigm

THE ROLE OF EDUCATION: ENABLING, ENOBLING AND EMPOWERING

According to dictionary, EDUCATION is defined as the process of changing the behavior of a person or group of people in human mature businesses through the efforts of teaching and training; educating means "to train the character" and "giving intelligence"



<http://agmarketingconsulting.com/>

ROLE 1: ENABLING

Education increases one's ability to a better life

Education gives people opportunities to access job market, increasing income, and increasing welfare, rising social status

ROLE 1: ENABLING... cont'd

If there are the following questions,

- ➔ Why do you go to school?,
- ➔ Why take a course (such as, tailor, technician, mechanic, etc.)?”,
- ➔ Why go to college?”,
- ➔ Why do you send your children to school?



The possible answers are:

- ➔ to be successful,
- ➔ to get a job,
- ➔ to have higher income,
- ➔ To be welfare not to become poor, and so on.



ROLE 2: ENNOBLING

Education makes life more dignified

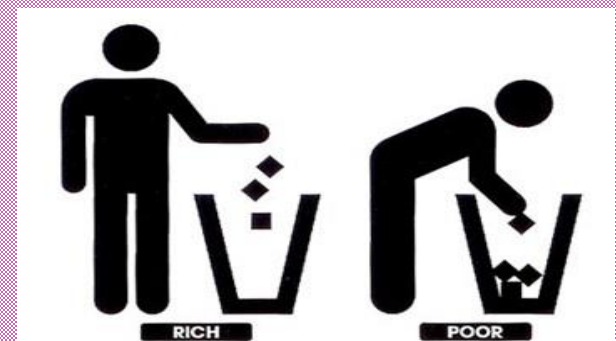
There are two types of social mobility

- horizontally
- vertically: vertical upward social mobility (social climbing) and downward social mobility (social sinking).



Factors which are influence Vertical mobility

- Income/standard of living
- Behavioral/attitude changes
- position / title
- EDUCATION



<http://www.ummi-online.com/>

ROLE 3: EMPOWERING

Education give (someone) the authority or power to do something → the way to elevate poverty

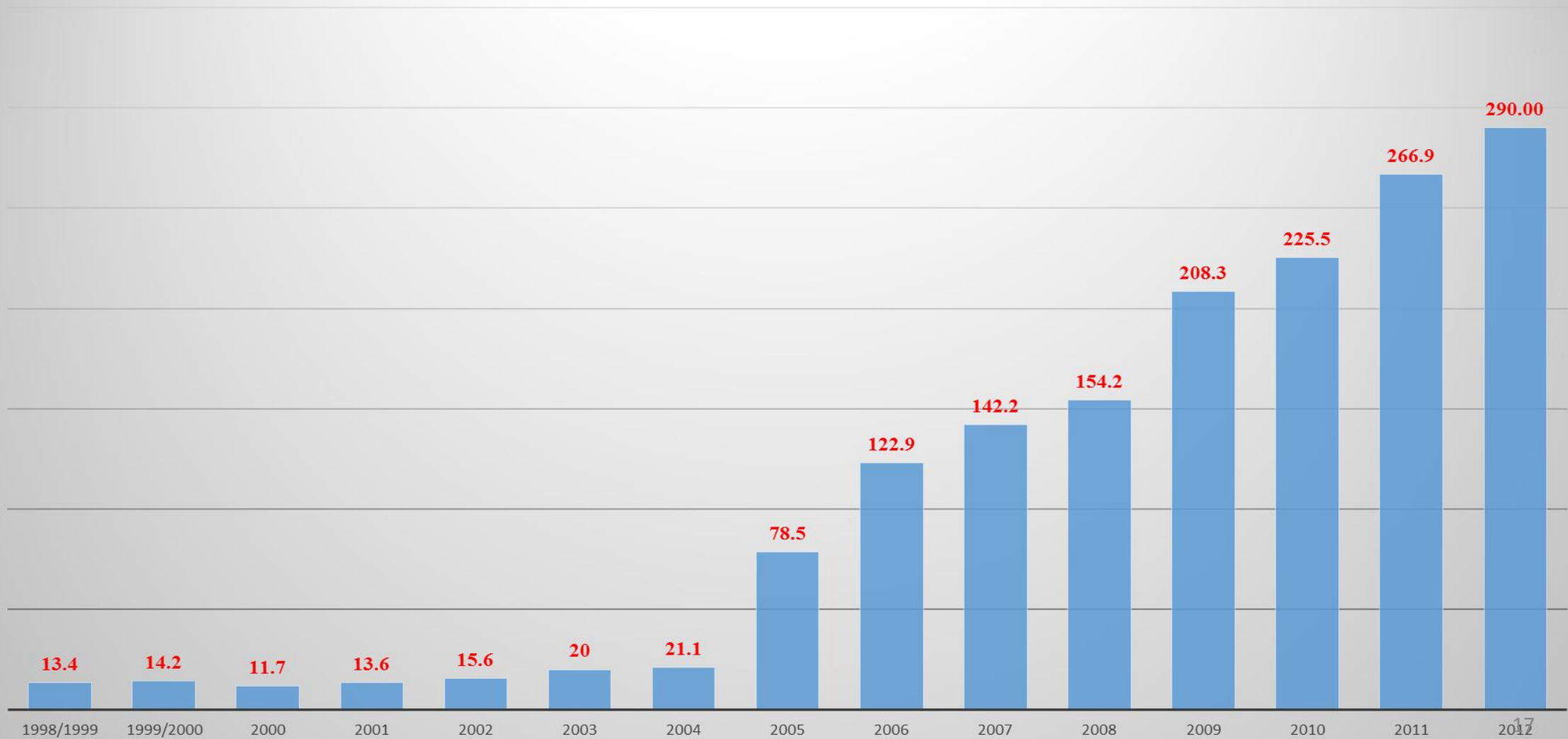


Clark (1944) in **An Investment in People** → “*experiments in low-income communities show clearly that education can be used to help people obtain a higher standard of living through their own efforts*”.

Westri, Ika Rahutami, Rahmat Djati (2013) identified two groups of poor who has different social psychology character. The first group is the group of the poor who tend to accept poverty as destiny. This group considers that education is not important and subsistence work. Secondly, the groups of poor who believe that poverty can be changed. **THEY ARGUE THAT THE KEY FACTOR TO GET OUT OF POVERTY IS EDUCATION.** Most of them set aside part of their income to live better in the future.

How Indonesia concerns with Education

Education Budget (Rp Trillion)



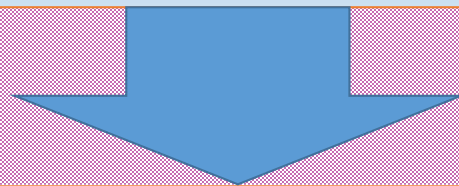
How Indonesia concerns with Education... cont'd

There are some programs used to increase the education facilities. and give away scholarship for students from elementary school level until university level. Those are School Operational Aid (Bantuan Operasional Sekolah/BOS), School Operational Aid for books, Special Aid (Bantuan Khusus Murid/BKM), and scholarships from elementary to college/higher education. The program is intended to facilitate educational fund for the students, especially for the poor ones as well as quality improvement through Quality Management Operational Assistance (BOMM). The program even recognized to be best practice by UNESCO.

THE ROLE OF LOCAL WISDOM

Local Wisdom is the knowledge that comes through a long period that people evolved together with their environment, inherent in the minds of people for generations and make it as a potential energy source community life (Keraf, 2002)

local wisdom is defined as the truth that has been a tradition or steadily in a region (Gobyah, 2009)



Local Wisdom → value which is considered to be good and true that lasts for generations and implemented by a particular communities

A FEW LOCAL WISDOM IN INDONESIA

1. *GOTONG ROYONG* .
2. KETAATAN PADA PEMIMPIN TERUTAMA TOKOH AGAMA
3. NGENGER
4. ORANG TUA ASUH
5. TABUNGAN CINTA KASIH

LOCAL WISDOM: INSTRUMENT TO DEVELOP THE POTENTIAL AND SOCIAL CAPITAL OF THE POOR.

Local wisdom is unique

Identifying and recognizing the socio-phicology character of the community is very important in empowering them.

Poverty Alleviation Programs will meet the need

Empowering the poor cannot simply rely on same patterns.

END NOTES: 1

Empowering the poor cannot simply rely on uniform patterns. There are differences in the social character of the community, and so does the poor. It is caused by differences in the natural environment, culture, social interaction, history, and a few other things. Therefore, in formulating poverty alleviation programs should be focused on the main characters in each group.

Starting poverty eradication from the point of view of “what poor people have” instead of “what poor people do not have or what the poor people need”. This approach has more positive energy than focus on what the poor people don’t have.

Local wisdom has a very important role in empowering the poor, because it contains positive values in society. Local wisdom is the social capital that can lead to and become trigger of poor potential development.

END NOTES: 4

According to Rhenald Kasali (2005), working is like a game of cards. You will win if you have “ACEs” (*in bahasa: AS*). *KerjakerAS* (working hardly), *kerjacerdAS* (working smartly), *kerjaikhlas* (working sincerely) and *kerjatuntAS* (working thoroughly).



So,teach/motivate the poor to have , to apply the four “AS” and their will win, they can help themselves to cope their own poverty.

TERIMAKASIH
THANK YOU