

## CHAPTER 4

### DATA ANALYSIS

This chapter analyzes the primary data of the research which is Abdellatif Kechiche's *Blue is the Warmest Colour*. In this chapter, the writer analyzes the intention behind the color used in the film. Several major scenes from every plot stage (exposition, rising action, climax, falling action, and resolution) are selected and analyzed using Patti Bellantoni's theory of color in cinema (Bellantoni, 2005). Therefore, this chapter is divided into three sections: Synopsis of *Blue is the Warmest Colour* by Abdellatif Kechiche, the identification of the film's narrative structure, and the function of color in the selected scenes.

#### **4.1 The Identification of the Film's Narrative Structure**

This section describes the narrative structure of *Blue as the Warmest Colour*. The narrative structure of the film consists of exposition, rising action, climax, falling action, and resolution.

##### **4.1.1 Exposition**

This stage presents the characters of the story as well as the settings. The story begins with the appearance of its main character named Adèle, a teenage girl from France who is currently studying in high school. Adèle is just a regular teenager of a high school student. Like other teenagers, she still attempts to find her true identity. One day, while she is on her way to a date with Thomas, a guy she meets from



**Figure 4.1 Adele's first encounter with Emma**  
*(Blue is the Warmest Colour, 2013)*

school, she sees a woman with blue hair who seems to catch her interest to the point where she seems distracted as she tries to cross a road.

The problem of the story begins when Adèle feels uninterested in establishing



**Figure 4.2 Adele having sexual dream about the blue-haired girl**  
*(Blue is the Warmest Colour, 2013)*

a sexual relationship with Thomas. This leads to the realization that she turns out to be not attracted to the opposite gender, as shown by her having an intimate dream about the blue-haired woman that she met earlier.

#### **4.1.2 Rising Action**

Rising action reveals the events building up to the main conflict of the story. In this stage, the story shows Adèle's recognition that she has no romantic interest in

the man she meets. Instead, she realizes that she relishes the company of a woman, which leads to the moment when she meets and slowly gets closer to a slightly older woman named Emma. After realizing that she has no feelings for Thomas, Adèle decides to end her relationship with Thomas which makes her deeply sad and is wondering whether there is something wrong with her.



**Figure 4.3 Adele breaking up with Thomas**  
*(Blue is the Warmest Colour, 2013)*

One day, one of her female friends jokingly flirted with her making her realize that she is into women, however, the female friend does not feel the same. One night she goes out to a club with a friend from school, feeling that she is not enjoying the situation she begins to wander out of the club where she discovers a bar which turns out to be a lesbian where she would meet with the blue-haired girl bar whose name is Emma and proceeds to talk with her. After spending a good amount of time with other for a little while, Adèle and Emma begin to have fondness for each other, which eventually becomes a relationship.



**Figure 4.4 Adele entering a gay bar**  
(*Blue is the Warmest Colour*, 2013)

#### 4.1.3 Climax



**Figure 4.5 Emma is on a business call**  
(*Blue is the Warmest Colour*, 2013)

The climax is the peak of the plot where the events of the main conflict of the story happen. This is the part that leads to the change in the story due to the conflict that has occurred. In this stage, Adèle now has finished school and become a preschool teacher while Emma is now a painter. Several years have passed, and Adèle's relationship with Emma continues as now she has graduated from high school and has become a preschool teacher. As time passes, her relationship with Emma

grows dull and Adèle feels neglected because Emma seems to be occupied with work for the majority of the time. Emma's hair also no longer appears to be blue. The lack of attention and affection from Emma provokes Adèle to seek comfort somewhere else. This is where she gets into infidelity which ends her relationship with Emma. One night Emma finds out that Adèle has been going out with a male co-worker, and Emma gets angry and proceeds to break up with Adèle.



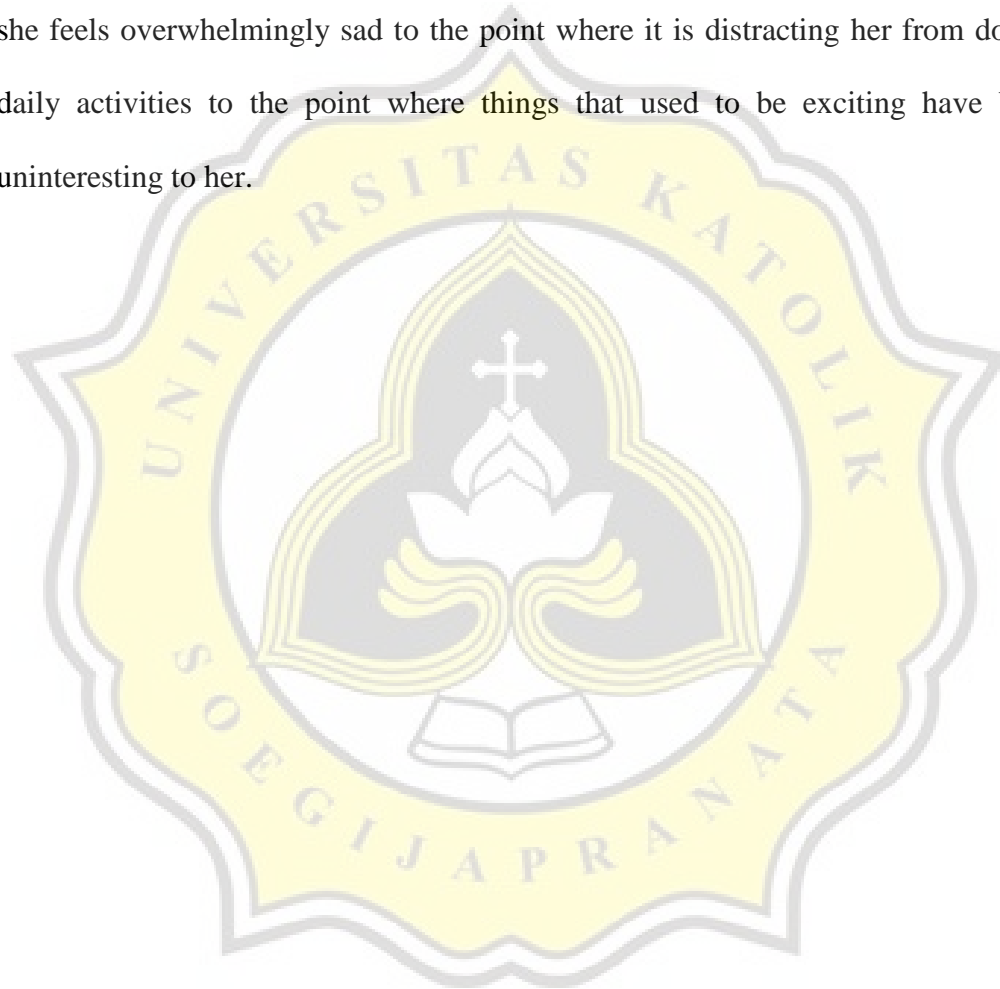
**Figure 4.6 Emma finding out Adele's infidelity**  
*(Blue is the Warmest Colour, 2013)*

#### **4.1.4 Falling Action**

The falling action follows after the occurrence of the conflict. In this stage, the film reveals the impacts of the conflict while also leading to Adèle's effort of finding the resolution to the problem. Following the event of Adèle's breakup with Emma, she seems to be broken up by it and is feeling deeply sad. Adèle appears to be

having irrepressible cries on multiple occasions and places because she is still unable to move on from Emma.

This is the stage after Adèle's break up with Emma. It shows several scenes where Adèle seems very sad about the situation. In these scenes, Adèle is able to mask her true emotion in front of other people. As a case in point, when she is alone she feels overwhelmingly sad to the point where it is distracting her from doing her daily activities to the point where things that used to be exciting have become uninteresting to her.







**Figures 4.7 and 4.8 Adele is emotionally wrecked after her relationship ended**  
*(Blue is the Warmest Colour, 2013)*

#### **4.1.5 Resolution**

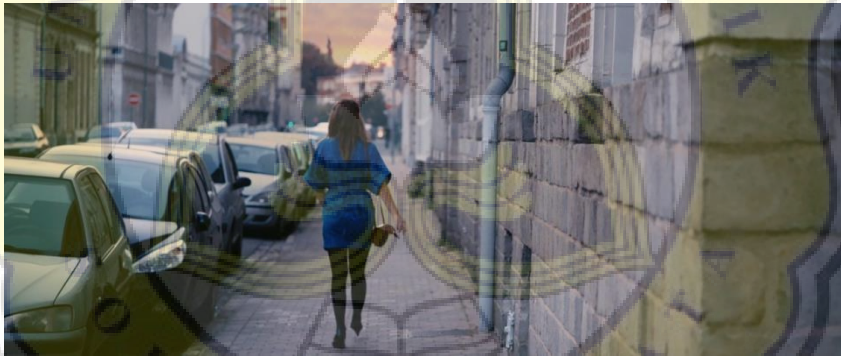
The resolution stage concludes the story. This is where the main character figures out a way to overcome the problem. Despite Adèle's intense feelings for Emma, she realizes that they were far too different. Adèle finally acknowledges the issue and leaves everything about Emma behind and decides to carry on with her life.



**Figure 4.9 Adele visiting Emma's art exhibition**  
*(Blue is the Warmest Colour, 2013)*

Adèle finally meets with Emma again for the first time after their breakup. They meet at a restaurant and they catch up on each other's lives. At some point, Adèle confesses that she still has feelings for Emma. However, she explains that she

already has a family. In a different scene, Adèle is invited to Emma's art exhibition, which she attends. Inside the gallery, she meets with Emma and talks for a while. Eventually, Emma has to go because she needs to explain the paintings that she is showcasing to the audience. After talking to some people, Adèle is all alone inside the gallery where once again she is reminded how incompatible she and Emma are. Adèle was never interested in painting, nor was she able to connect with any of Emma's friends. This is when she realizes that their relationship would not have worked out because they are too different. Adèle proceeds to walk out of the gallery and walks away from the place.



**Figure 4.10** Adele leaving Emma's art exhibition  
(*Blue is the Warmest Colour*, 2013)

The section above is the plot stages of *Blue is the Warmest Colour*. The following section is the analysis of the use of color based on Patti Bellantoni's theory of color in cinema. By identifying the major scenes of the film the writer is able to find the important shots in the film, which will be analyzed using color interpretation and their implicit meanings.



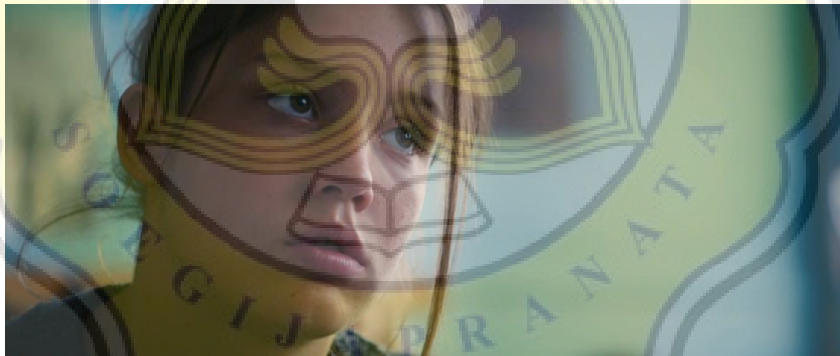
## 4.2 Purposes of Color in the Selected Scenes

The following subchapter contains the analysis regarding the use of color in the selected scenes based on Bellantoni's (2005) theory of color in cinema. The writer analyzes the correlation between selected scenes and their color use pertinent to the context of the scene and the film narrative. Furthermore, the selected scenes are the major scenes of the film from five different stages of the plot of the story.

### 4.2.1 Exposition

The following part is the analysis of color in the exposition stage.

#### 4.2.1.1 Passive Blue



**Figure 4.11 Adele attending a literature class**  
(*Blue is the Warmest Colour*, 2013)

In this scene, the film introduced the main character of the story Adèle, a female high school student rushing into her school to attend a literature class. Inside the classroom, students are reading and discussing a book entitled *The Life of Marianne*. Some students seem to be paying attention to the teacher while others

seem to talk to each other. The story begins with an introduction of a teenage woman paying close attention to the teacher who is currently talking about love at first sight in relation to the book that they are discussing. In the scene, the shot is dominated by the light blue of the classroom wall. The light blue color of the background in the context suggests shyness and passivity of Adèle. One of the characteristics of blue as suggested by Bellantoni is that blue, especially of this saturation, implies passivity. Passivity relates to the non-confrontational or reserved characteristic. This perspective explains the passivity meaning of the color with the characteristic of the person, Adèle, a lesbian who has always been passive about her sexuality. She has never spoken up about her true sexual identity, neither to her friends nor her parents. One time Emma visits Adèle house to have dinner, though she does have dinner with her parents, Adèle's parents only know her as someone who has been helping her with the subject of philosophy.

#### Dialogue

Everyone is enjoying the food that Adèle's mother has been preparing.

Adèle's mother: "It's nice of you to help her with philosophy. It's a really hard subject. She was having a tough time, but now it seems to be going well.

[points at Adèle] Your grades are up. Thanks to you. [referring to Emma]

Emma looks surprised, most likely because Adèle did not introduce her to her parents as her girlfriend.

Emma : "It's a pleasure for me."

Adèle : "I wasn't going about it right. She taught me to make outlines."

Adèle's father: "That's important."

Adèle's mother: "I don't know they can do that subject in just a year. I don't see the point. You can't do it in depth." (Kechiche, 2013, 01:35:34)

Another finding that shows Adèle as a passive or reserved character is when during a school break, this is when she has become a preschool teacher, she sits on a bench with a male co-worker and a student. This is where the co-worker offers her to go outside with the others but she tries to avoid it by lying to him about the reason that she has a family dinner to attend while in fact, she has not been in touch with her parents ever since she starts living with Emma.

Dialogue

Co-worker: "What are you doing tonight?"

Adèle : "I don't know."

Co-worker: "We're going out for a drink. Sylvie, Quentin, Anabelle. Want to come?"

Adèle : "But tonight I have a family dinner."

Co-worker: "You have a lot of family dinners."

Adèle : "These days I do. Maybe after. Around what time?"

Co-worker: "Are you avoiding us?"

Adèle : "Why do you say that?"

Co-worker: "Whenever I suggest something, you're busy."

Adèle : "Just bad timing, that's all."

Co-worker: "Is your family far?"

Adèle : "No, pretty close. A few miles."

Co-worker: “Okay, then.” (Kechiche, 2013, 01:43:52)

Even after being in a relationship with Emma for a quite long time and she becomes a teacher, she is still hiding her sexual orientation, which in this case, she is hiding it from a working co-worker (Bellantoni 2005, pp. 27, 107–109).

#### **4.2.2 Rising Action**

The section below analyses the use of color in the rising action stage in which the main character goes through events building up to the main problem.

##### **4.2.2.1 Melancholic Blue**

Feeling unhappy with her relationship with Thomas, Adèle decides to end their relationship. They sit down on a blue school bench and Adèle explains to Thomas how she feels and tells him how sorry she is. Thomas does not seem to take this situation very well as he begins to tear up. Soon after, Thomas stands up, takes the last hit of the cigarette, and walks away.

Dialogue

Adèle and Thomas sit down on a bench

Thomas : “It’s over. All settled.” [tearing up]

Adèle : [stares regretfully at Thomas] “I’m sorry. I swear I am.”

Thomas : [stands up and leaves the shot] (Kechiche, 2013, 00:26:47)

The scene after shows Adèle walking home and as she enters her room she begins to cry and then starts eating a box full of snacks that she hides under her bed and proceeds to eat as she continues to sob.



**Figure 4.12 Adèle breaking up with Thomas**  
(*Blue is the Warmest Colour*, 2013)

As previously mentioned, one of the emotional characteristics represented by the color blue is representing melancholy or sadness. The color blue in this scene insinuates the atmosphere of sadness that they both are feeling at the moment. The color blue feels even more dominant considering that the two are sitting right on it and it is in the center of the shot (Bellantoni 2005, p. 101).

#### **4.2.2.2 Naïve Orange**

One day Adèle sitting down by a stairwell when one of her female friends approaches her, both of them light up a cigarette and start talking. Her friend starts to compliment her looks and out of nowhere kisses her. Flattered by what her friend just did, the next





**Figure 4.13 Adele entering a gay bar**  
*(Blue is the Warmest Colour, 2013)*

the day she walks up to the same girl to which she reacts that she was just joking and that she means nothing serious. Saddened by the situation Adèle rushes out of the school building. Seeing that she has been looking miserable lately, another friend of hers offers Adèle to go out with him to which she accepts the invitation. Adèle ends up going out to a club, however, she does not seem to be enjoying the circumstance and so she begins to walk out of the club. Upon wandering outside the club, she sees a bar that appeals to her interest so she decides to go inside. As it turns out it was a lesbian bar, inside she sees things that she has never seen before in her life. In the bar, she is discovering something new, something that leads to something big in her

journey of finding her true identity. This scene shows Adèle's first interaction with Emma in person.

#### Dialogue

Adèle : [sitting down at a bar counter]

Seeing that a woman is bothering Adèle, Emma decides to approach her and tell the woman that she is her cousin even though she is not.

Emma : [walks up to the counter next to Adèle and orders a drink] "Why are you here all alone?"

Adèle : "I don't know. I came in here by chance"

Emma : "Ah, by chance" (Kechiche, 2013, 00:46:09)

One of the purposes of the color orange according to Bellantoni's findings is that it communicates naivete. This scene shows that Adèle has no prior knowledge about homosexuality, upon entering the bar she looks very surprised by what is inside, an entirely new environment that is rather shocking for her. (Bellantoni, 2005, p. 123)

### 4.2.3 Climax

The section below shows the findings on the use of color in the climax stage.

#### 4.2.3.1 Lusty Red



**Figure 4.14 Adele dancing with a male colleague**  
*(Blue is the Warmest Colour, 2013)*

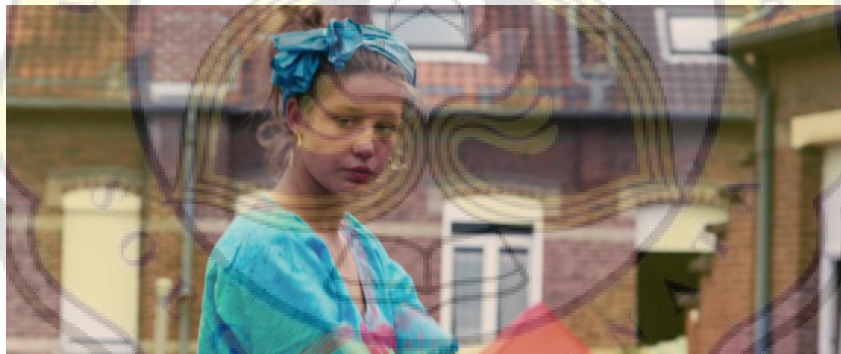
It is just a regular day when Adèle comes home from work finding that Emma is not home. She is not affected by that fact because their relationship has been growing distant lately. This time Adèle decides to go out with a male co-worker where they meet at some sort of dance gathering. Adèle approaches the man and starts dancing, after dancing for a while the sexual tenses are escalating between the two. The next shot shows Adèle taking off her second layer of clothing as the temperature has become increasingly hot, and continues to dance with her co-worker. Not long after, she proceeds to kiss him. Her action is motivated by a lack of affection from Emma. This one particular shot shows the red of the man's shirt combined with the lighting spotting him making the red even more saturated. As stated in Bellantoni 2005, pp. 11–13), one of the characteristics of red is lusty. The red that appears to intensify sexual desire combined with her cravings for affection makes her decide to kiss the man. This event leads to her breakup with Emma after she finds out that Adèle has been going out with someone else. It all begins with a provoked craving for affection (Bellantoni 2005, pp. 11–13).

#### 4.2.4 Falling Action

The following section shows the use of color in the falling action which is the event resulting from the main problem of the story.

##### 4.2.4.1 Melancholic Blue

Adèle is attending some sort of art performance on a stage with her students at some unknown time after her breakup with Emma. They are dancing to an ethnic song and all her students seem to be enjoying the activity and are very into it. Adèle is also seen to be dancing along guiding her students even though she does not seem to be very focused on anything she does. Her sadness is very evident, however much her dancing body tries to convince everyone otherwise.



**Figure 4.15 Adele participating in a school art performance**  
*(Blue is the Warmest Colour, 2013)*

The paleness of blue in her attire and accessories conveys a message regarding her current state of emotion which is sadness, how she is emotionally wrecked about what just happened to her, and that it is difficult to come back from it. After finishing the performance she and her students come back to the classroom, the parents are thanking her and give her flower, and some kids give her goodbye kisses. When

everyone else has left the classroom, she sits down in the back of the empty classroom unable to hold back her tears and starts sobbing uncontrollably (Bellantoni, 2005, p. 101).

#### 4.2.4.2 Powerless Blue

Adèle is going on a school beach trip with her students and they seem to be enjoying their time. Adèle decides to join her students in playing with sand when a co-worker approaches and asks her if everything is fine, Adèle proceeds to ask her to watch for the kids while she is going to take a swim in the ocean. She swims further and further until finally she stops and lies afloat on the water facing and staring emptily at the sky where occasionally she closes her eyes.



**Figure 4.16 Adele swimming in the ocean**  
*(Blue is the Warmest Colour, 2013)*

Still around the same moment after her breakup with Emma, she has not seemed to be able to move on from her. In one scene where Adèle is floating in the water, her face is surrounded by the blue of the ocean. The color usage in association



with the current emotion displays powerlessness, emptiness, and lack of energy due to a tremendous loss, something that is very important in her life. This makes her lose any sense of enthusiasm in life. Lack of saturation in a color means to communicate powerlessness (Bellantoni, 2005, p. 6).

#### **4.2.5 Resolution**

The following section shows the analysis of the use of color in the resolution stage where the character has found her way to solve what she is previously facing.

##### **4.2.5.1 Powerless Blue**

Adèle walks in into the art gallery and goes straight to meet Emma. Adèle thanks her for the invitation and then Emma proceeds to show Adèle her paintings. Adèle glances around the gallery for a while, she also talks to some of Emma whom she has met before. It appears that Adèle does not enjoy this type of enjoyment. As a matter of fact, she never does. Back when she was still in a relationship with Emma, she always fails to connect with her friends who are far too different from her. On top of that, Emma is now in a relationship with someone else and even has a child with her.

Adèle finally able to see Emma again for the first time after their breakup, they meet at a restaurant and begin to catch up with each other's lives.

Dialogue

Adèle : "I miss you. I miss touching each other, seeing each other, breathing in each other's scent. [grabs Emma's hand] I want you. All the time.

No one else. I miss everything. But I have to say, I miss this. [kisses Emma's hand]

Emma : "Stop."

Adèle : "Don't say you don't want to. I don't believe it. I know you miss it too."

Adèle proceeds to kiss Emma, Emma reciprocates but eventually stops

Emma : "Stop. I can't."

Adèle : "Forgive me. I don't know. I don't know. It's beyond my control."

Emma : "You're forgiven."

Adèle : "You won't see me anymore?"

Emma : [shakes her head] "No."

Adèle : "You haven't forgiven me."

Emma : "Yes. I have."

Adèle : "You don't love me anymore."

Emma : [shakes her head indicating a no]

Adèle : "Are you sure?"

Emma : "Yes. I'm with someone else now. You know that. But I feel an infinite tenderness for you. I always will."

Adèle : [begins to cry]

Emma : "I'm sorry."

Adèle : "You know me. Sometimes I cry for no reason."

Emma : "Yeah, I know you pretty damn well."

Adèle : “Happen to me every time.”

Emma : “I know. You’re always blubbing.”

Adèle : “Leave whenever you want.”

Emma : “Yeah, right.”

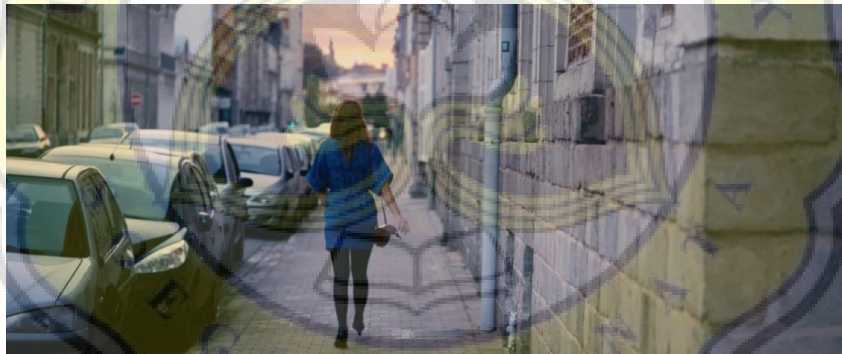
Adèle : “No, really. I won’t bother you again.”

Emma : “You’re not bothering me. Okay I’m going.”

Adèle & Emma : [hug]

Adèle : “Get going. Go on, beat it.”

Emma : [leaves the restaurant] (Kechiche, 2013, 02:39:03)

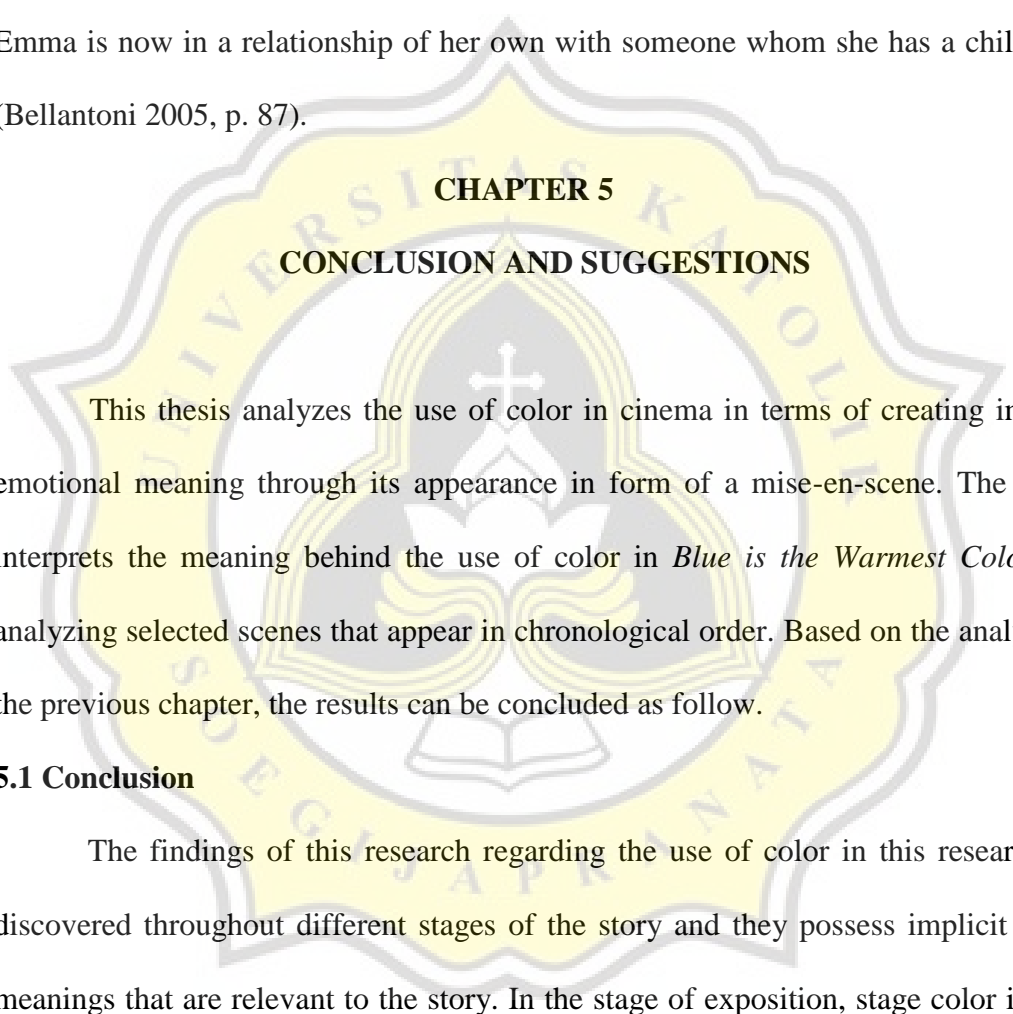


**Figure 4.17** Adele leaving Emma’s art exhibition  
(*Blue is the Warmest Colour*, 2013)

After talking a bit more with several people, Adèle proceeds to head out of the gallery and walks away. The dark blue color here goes in accordance with Bellantoni’s findings explaining powerlessness. It is about the impossibility of

bringing something back to the way it was. In this scene, Adèle realizes knows that she has messed up tremendously and that it ruined something really special for her.

This is what the color blue here tries to convey, which is the impossibility for Adèle to bring back her relationship with Emma because of what she has done to her. While Adèle still has feelings for Emma, the feeling does not go both ways. On top of that Emma is now in a relationship of her own with someone whom she has a child with (Bellantoni 2005, p. 87).



## **CHAPTER 5**

### **CONCLUSION AND SUGGESTIONS**

This thesis analyzes the use of color in cinema in terms of creating implicit emotional meaning through its appearance in form of a mise-en-scene. The writer interprets the meaning behind the use of color in *Blue is the Warmest Colour* by analyzing selected scenes that appear in chronological order. Based on the analysis in the previous chapter, the results can be concluded as follow.

#### **5.1 Conclusion**

The findings of this research regarding the use of color in this research are discovered throughout different stages of the story and they possess implicit visual meanings that are relevant to the story. In the stage of exposition, stage color is used as a medium to introduce the character's personality which is light blue. It is discovered that using Patti Bellantoni's theory, the color represents Adèle's passivity—her secretive behavior about her sexual identity. Throughout the story, she