

## 7. LAMPIRAN

### 7.1. Uji Normalitas

#### 7.1.1. Natrium metabisulfit

**Tests of Normality**

	Kolmogorov-Smirnov <sup>a</sup>			Shapiro-Wilk		
	Statistic	df	Sig.	Statistic	df	Sig.
Standardized Residual for Tekstur	.234	24	.002	.862	24	.004

a. Lilliefors Significance Correction

**Tests of Normality**

	Kolmogorov-Smirnov <sup>a</sup>			Shapiro-Wilk		
	Statistic	df	Sig.	Statistic	df	Sig.
Standardized Residual for Warna_L	.208	24	.009	.908	24	.032

a. Lilliefors Significance Correction

**Tests of Normality**

	Kolmogorov-Smirnov <sup>a</sup>			Shapiro-Wilk		
	Statistic	df	Sig.	Statistic	df	Sig.
Standardized Residual for Warna_a	.167	24	.084	.931	24	.100

a. Lilliefors Significance Correction

**Tests of Normality**

	Kolmogorov-Smirnov <sup>a</sup>			Shapiro-Wilk		
	Statistic	df	Sig.	Statistic	df	Sig.
Standardized Residual for Warna_b	.170	24	.070	.886	24	.011

a. Lilliefors Significance Correction

**Tests of Normality**

	Kolmogorov-Smirnov <sup>a</sup>			Shapiro-Wilk		
	Statistic	df	Sig.	Statistic	df	Sig.
Standardized Residual for Kadar_air	.158	24	.124	.927	24	.083

a. Lilliefors Significance Correction

**Tests of Normality**

	Kolmogorov-Smirnov <sup>a</sup>			Shapiro-Wilk		
	Statistic	df	Sig.	Statistic	df	Sig.
Standardized Residual for Kadar_Gula	.146	24	.200*	.924	24	.072

a. Lilliefors Significance Correction

\*. This is a lower bound of the true significance.

**Tests of Normality**

	Kolmogorov-Smirnov <sup>a</sup>			Shapiro-Wilk		
	Statistic	df	Sig.	Statistic	df	Sig.
Standardized Residual for Vitamin_C	.135	24	.200*	.960	24	.445

a. Lilliefors Significance Correction

\*. This is a lower bound of the true significance.

**7.1.2. Kalsium klorida****Tests of Normality**

	Kolmogorov-Smirnov <sup>a</sup>			Shapiro-Wilk		
	Statistic	df	Sig.	Statistic	df	Sig.
Standardized Residual for Tekstur	.255	24	.000	.829	24	.001

a. Lilliefors Significance Correction

**Tests of Normality**

	Kolmogorov-Smirnov <sup>a</sup>			Shapiro-Wilk		
	Statistic	df	Sig.	Statistic	df	Sig.
Standardized Residual for Warna_L	.234	24	.001	.740	24	.000

a. Lilliefors Significance Correction

**Tests of Normality**

	Kolmogorov-Smirnov <sup>a</sup>			Shapiro-Wilk		
	Statistic	df	Sig.	Statistic	df	Sig.
Standardized Residual for Warna_a	.137	24	.200*	.942	24	.184

a. Lilliefors Significance Correction

\*. This is a lower bound of the true significance.

**Tests of Normality**

	Kolmogorov-Smirnov <sup>a</sup>			Shapiro-Wilk		
	Statistic	df	Sig.	Statistic	df	Sig.
Standardized Residual for Warna_b	.151	24	.163	.919	24	.055

a. Lilliefors Significance Correction

**Tests of Normality**

	Kolmogorov-Smirnov <sup>a</sup>			Shapiro-Wilk		
	Statistic	df	Sig.	Statistic	df	Sig.
Standardized Residual for Kadar_air	.250	24	.000	.867	24	.005

a. Lilliefors Significance Correction

**Tests of Normality**

	Kolmogorov-Smirnov <sup>a</sup>			Shapiro-Wilk		
	Statistic	df	Sig.	Statistic	df	Sig.
Standardized Residual for Kadar_gula	.077	24	.200*	.963	24	.505

a. Lilliefors Significance Correction

\*. This is a lower bound of the true significance.

**Tests of Normality**

	Kolmogorov-Smirnov <sup>a</sup>			Shapiro-Wilk		
	Statistic	df	Sig.	Statistic	df	Sig.
Standardized Residual for Vitamin_C	.247	24	.001	.814	24	.000

a. Lilliefors Significance Correction

**7.1.3. Kapur sirih****Tests of Normality**

	Kolmogorov-Smirnov <sup>a</sup>			Shapiro-Wilk		
	Statistic	df	Sig.	Statistic	df	Sig.
Standardized Residual for Tekstur	.174	24	.059	.894	24	.016

a. Lilliefors Significance Correction

**Tests of Normality**

	Kolmogorov-Smirnov <sup>a</sup>			Shapiro-Wilk		
	Statistic	df	Sig.	Statistic	df	Sig.
Standardized Residual for Warna_L	.256	24	.000	.772	24	.000

a. Lilliefors Significance Correction

**Tests of Normality**

	Kolmogorov-Smirnov <sup>a</sup>			Shapiro-Wilk		
	Statistic	df	Sig.	Statistic	df	Sig.
Standardized Residual for Warna_a	.237	24	.001	.878	24	.008

a. Lilliefors Significance Correction

**Tests of Normality**

	Kolmogorov-Smirnov <sup>a</sup>			Shapiro-Wilk		
	Statistic	df	Sig.	Statistic	df	Sig.
Standardized Residual for Warna_b	.194	24	.020	.899	24	.021

a. Lilliefors Significance Correction

**Tests of Normality**

	Kolmogorov-Smirnov <sup>a</sup>			Shapiro-Wilk		
	Statistic	df	Sig.	Statistic	df	Sig.
Standardized Residual for Kadar_air	.208	24	.008	.844	24	.002

a. Lilliefors Significance Correction

**Tests of Normality**

	Kolmogorov-Smirnov <sup>a</sup>			Shapiro-Wilk		
	Statistic	df	Sig.	Statistic	df	Sig.
Standardized Residual for Kadar_gula	.111	24	.200*	.959	24	.419

a. Lilliefors Significance Correction

\*. This is a lower bound of the true significance.

**Tests of Normality**

	Kolmogorov-Smirnov <sup>a</sup>			Shapiro-Wilk		
	Statistic	df	Sig.	Statistic	df	Sig.
Standardized Residual for Vitamin_C	.194	24	.020	.888	24	.012

a. Lilliefors Significance Correction

## 7.2. Uji Two Way ANOVA

### 7.2.1. Natrium metabisulfit

#### Tekstur

Duncan

Konsentrasi	N	Subset	
		1	2
0%	6	1535.50	
0,20%	6		1778.17
0,25%	6		1850.33
0,30%	6		2004.17
Sig.		1.000	.069

Means for groups in homogeneous subsets are displayed.

Based on observed means.

The error term is Mean Square(Error) = 37421,725.

#### Warna\_L

Duncan

Konsentrasi	N	Subset	
		1	2
0%	6	64.50	
0,20%	6	66.00	66.00
0,25%	6	66.50	66.50
0,30%	6		68.50
Sig.		.278	.178

Means for groups in homogeneous subsets are displayed.

Based on observed means.

The error term is Mean Square(Error) = 8,625.

**Warna\_a**

Duncan

Konsentrasi	N	Subset		
		1	2	3
0%	6	13.67		
0,30%	6		15.17	
0,25%	6			16.17
0,20%	6			16.50
Sig.		1.000	1.000	.386

Means for groups in homogeneous subsets are displayed.

Based on observed means.

The error term is Mean Square(Error) = ,425.

**Warna\_b**

Duncan

Konsentrasi	N	Subset	
		1	2
0%	6	26.50	
0,25%	6	27.83	
0,20%	6		31.00
0,30%	6		31.67
Sig.		.344	.633

Means for groups in homogeneous subsets are displayed.

Based on observed means.

The error term is Mean Square(Error) = 5,683.

**Kadar\_air**

Duncan

Konsentrasi	N	Subset		
		1	2	3
0,30%	6	7.33		
0,25%	6	7.50		
0,20%	6		8.67	
0%	6			10.00
Sig.		.534	1.000	1.000

Means for groups in homogeneous subsets are displayed.

Based on observed means.

The error term is Mean Square(Error) = ,208.

**Kadar\_Gula**

Duncan

Konsentrasi	N	Subset		
		1	2	3
0,20%	6	44.1667		
0%	6	55.3333	55.3333	
0,25%	6		61.0000	61.0000
0,30%	6			69.5000
Sig.		.059	.322	.143

Means for groups in homogeneous subsets are displayed.

Based on observed means.

The error term is Mean Square(Error) = 93,383.



### Vitamin\_C

Duncan

Konsentrasi	N	Subset			
		1	2	3	4
0%	6	130.83			
0,20%	6		203.83		
0,25%	6			256.50	
0,30%	6				295.33
Sig.		1.000	1.000	1.000	1.000

Means for groups in homogeneous subsets are displayed.

Based on observed means.

The error term is Mean Square(Error) = 929,725.

### 7.2.2. Kalsium klorida

Tekstur

Duncan

Konsentrasi	N	Subset
		1
0%	6	1.5355E3
1,5%	6	1.6155E3
1%	6	1.6185E3
2%	6	1.7055E3
Sig.		.197

Means for groups in homogeneous subsets are displayed.

Based on observed means.

The error term is Mean Square(Error) = 41015,795.

## Warna\_L

Duncan

Konsentrasi	N	Subset	
		1	2
0%	6	64.5000	
1%	6	65.5000	
1,5%	6	68.5000	68.5000
2%	6		71.5000
Sig.		.159	.260

Means for groups in homogeneous subsets are displayed.

Based on observed means.

The error term is Mean Square(Error) = 20,100.

Warna\_a

Duncan

Konsentrasi	N	Subset	
		1	2
2%	6	11.5000	
0%	6	13.6667	13.6667
1,5%	6		15.0000
1%	6		15.5000
Sig.		.059	.124

Means for groups in homogeneous subsets are displayed.

Based on observed means.

The error term is Mean Square(Error) = 3,517.

**Warna\_b**

Duncan

Konsentrasi	N	Subset	
		1	
0%	6	26.5000	
1%	6	26.5000	
2%	6	27.5000	
1,5%	6	30.5000	
Sig.			.139

Means for groups in homogeneous subsets are displayed.

Based on observed means.

The error term is Mean Square(Error) = 17,100.

**Kadar\_air**

Duncan

Konsentrasi	N	Subset	
		1	2
2%	6	7.5000	
1,5%	6	7.8333	
1%	6		9.0000
0%	6		10.0000
Sig.		.553	.085

Means for groups in homogeneous subsets are displayed.

Based on observed means.

The error term is Mean Square(Error) = ,917.

**Kadar\_gula**

Duncan

Konsentrasi	N	Subset	
		1	
2%	6	53.8333	
0%	6	55.3333	
1,5%	6	56.8333	
1%	6	57.6667	
Sig.			.689

Means for groups in homogeneous subsets are displayed.

Based on observed means.

The error term is Mean Square(Error) = 223,417.

**Vitamin\_C**

Duncan

Konsentrasi	N	Subset	
		1	2
1%	6	65.1667	
1,5%	6	68.6667	
2%	6	82.6667	
0%	6		1.3083E2
Sig.		.085	1.000

Means for groups in homogeneous subsets are displayed.

Based on observed means.

The error term is Mean Square(Error) = 251,917.

**7.2.3. Kapur sirih**

**Tekstur**

Duncan

Konsentrasi	N	Subset	
		1	2
0%	6	1.5355E3	
0,5%	6	1.5568E3	
1%	6	1.6155E3	
1,5%	6		1.9415E3
Sig.		.501	1.000

Means for groups in homogeneous subsets are displayed.

Based on observed means.

The error term is Mean Square(Error) = 36366,867.

**Warna\_L**

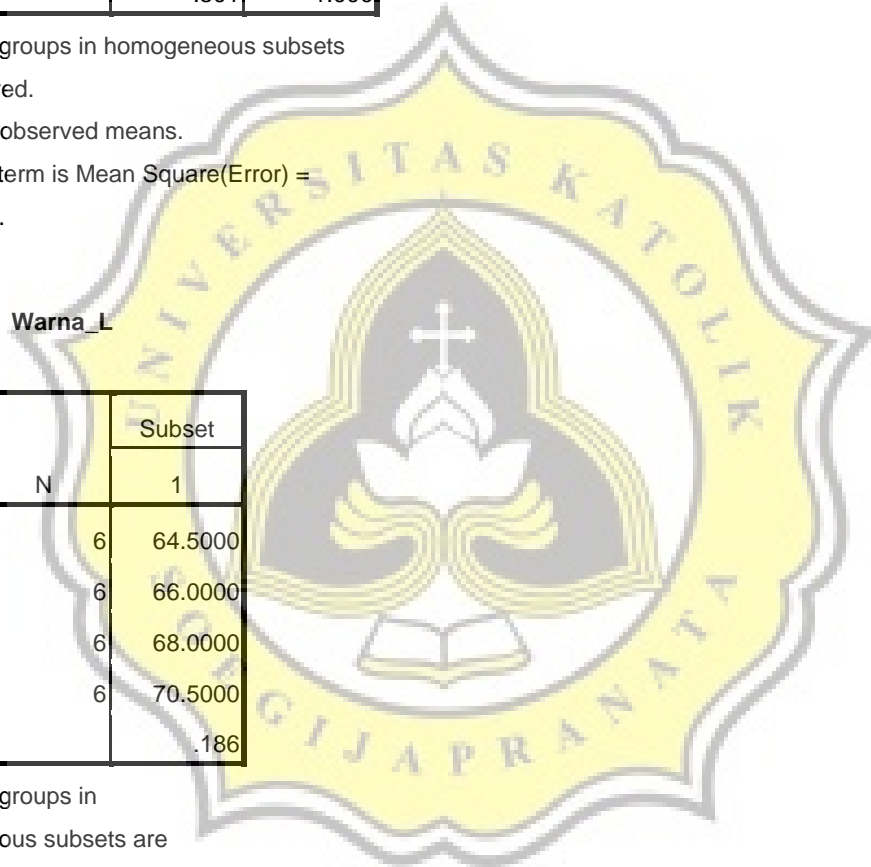
Duncan

Konsentrasi	N	Subset
		1
0%	6	64.5000
0,5%	6	66.0000
1%	6	68.0000
1,5%	6	70.5000
Sig.		.186

Means for groups in homogeneous subsets are displayed.

Based on observed means.

The error term is Mean Square(Error) = 48,450.



**Warna\_a**

Duncan

Konsentrasi	N	Subset	
		1	2
0,5%	6	11.0000	
1,5%	6	11.6667	
1%	6	12.5000	12.5000
0%	6		13.6667
Sig.		.120	.198

Means for groups in homogeneous subsets are displayed.

Based on observed means.

The error term is Mean Square(Error) = 2,308.

**Warna\_b**

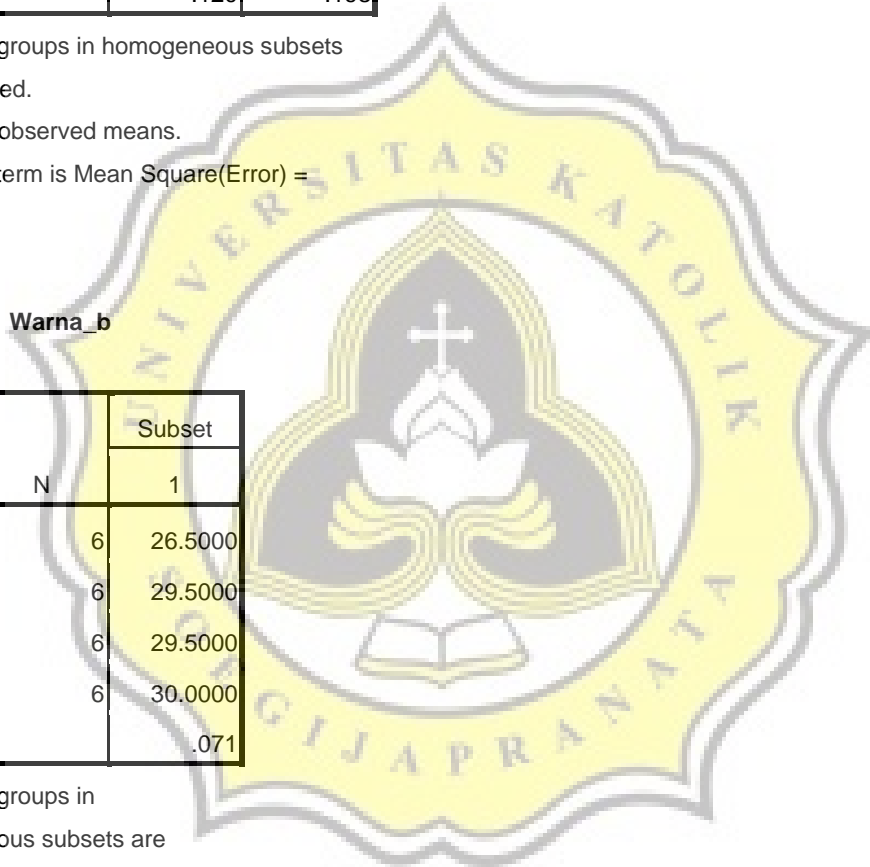
Duncan

Konsentrasi	N	Subset
		1
0%	6	26.5000
0,5%	6	29.5000
1,5%	6	29.5000
1%	6	30.0000
Sig.		.071

Means for groups in homogeneous subsets are displayed.

Based on observed means.

The error term is Mean Square(Error) = 8,625.



**Kadar\_air**

Duncan

Konsent rasi	N	Subset		
		1	2	3
1,5%	6	7.0000		
1%	6		8.0000	
0,5%	6		8.1667	
0%	6			10.0000
Sig.		1.000	.722	1.000

Means for groups in homogeneous subsets are displayed.

Based on observed means.

The error term is Mean Square(Error) = ,642.

**Kadar\_gula**

Duncan

Konsent rasi	N	Subset
		1
1,5%	6	51.6667
0%	6	55.3333
1%	6	55.8333
0,5%	6	63.5000
Sig.		.199

Means for groups in homogeneous subsets are displayed.

Based on observed means.

The error term is Mean Square(Error) = 200,950.

### Vitamin\_C

Duncan

Konsentrasi	N	Subset	
		1	2
1,5%	6	65.1667	
1%	6	66.1667	
0,5%	6	67.6667	
0%	6		1.3083E2
Sig.		.709	1.000

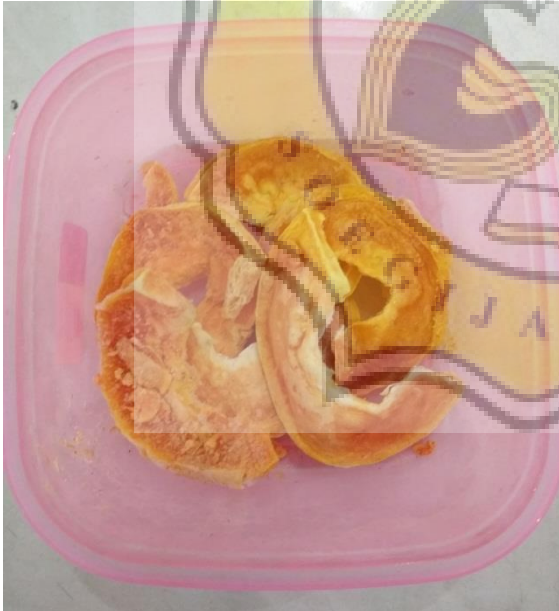
Means for groups in homogeneous subsets are displayed.

Based on observed means.

The error term is Mean Square(Error) = 115,892.

### 7.3. Foto-foto

#### 7.3.1. Hasil keripik pepaya





### 7.3.2. Freeze dryer



### 7.3.3. Freezer



## Doc vs Internet + Library

92.82% Originality	7.18% Similarity	263 Sources
--------------------	------------------	-------------

### Web sources: 113 sources found

1. <a href="https://repository.ipb.ac.id/bitstream/handle/123456789/45970/F06ani2.pdf?sequence=1&amp;isAllowed...">https://repository.ipb.ac.id/bitstream/handle/123456789/45970/F06ani2.pdf?sequence=1&amp;isAllowed...</a>	0.6%
2. <a href="https://jurnal.ugm.ac.id/agritech/article/download/12015/20331">https://jurnal.ugm.ac.id/agritech/article/download/12015/20331</a>	0.28%
3. <a href="http://repository.unpas.ac.id/44/1/Artikel%20Manisan%20Kering%20Salak%20Bongkok.doc">http://repository.unpas.ac.id/44/1/Artikel%20Manisan%20Kering%20Salak%20Bongkok.doc</a>	0.27%
4. <a href="https://id.123dok.com/document/6qmnmm8z-kajian-pengeringan-dan-pendugaan-umur-simpan-sele..">https://id.123dok.com/document/6qmnmm8z-kajian-pengeringan-dan-pendugaan-umur-simpan-sele..</a>	0.26%
5. <a href="https://docplayer.info/118316384-Karakterisasi-sifat-fisikokimia-tepung-labu-kuning-cucurbita-mosc...">https://docplayer.info/118316384-Karakterisasi-sifat-fisikokimia-tepung-labu-kuning-cucurbita-mosc...</a>	0.26%
6. <a href="https://jbkt.ub.ac.id/index.php/jbkt/article/download/144/131">https://jbkt.ub.ac.id/index.php/jbkt/article/download/144/131</a>	0.26%
7. <a href="http://eprints.ums.ac.id/42830/2/NASKAH%20PUBLIKASI.pdf">http://eprints.ums.ac.id/42830/2/NASKAH%20PUBLIKASI.pdf</a>	0.21%
8. <a href="https://core.ac.uk/download/pdf/35393145.pdf">https://core.ac.uk/download/pdf/35393145.pdf</a>	0.21%
9. <a href="http://repository.unpas.ac.id/33911/1/artikel.pdf">http://repository.unpas.ac.id/33911/1/artikel.pdf</a>	0.21%
10. <a href="https://id.123dok.com/document/zlg7r0ly-pembuatan-tepung-bengkuang-dengan-kajian-konsentra...">https://id.123dok.com/document/zlg7r0ly-pembuatan-tepung-bengkuang-dengan-kajian-konsentra...</a>	0.21%
11. <a href="https://naning-septiyani.blogspot.com/2012/06/ilmuteknologi-pangan-bahantambahan.html">https://naning-septiyani.blogspot.com/2012/06/ilmuteknologi-pangan-bahantambahan.html</a>	0.21%
12. <a href="https://core.ac.uk/download/pdf/35400797.pdf">https://core.ac.uk/download/pdf/35400797.pdf</a>	0.21%
13. <a href="http://eprints.upnjatim.ac.id/666/1/file1.pdf">http://eprints.upnjatim.ac.id/666/1/file1.pdf</a>	0.21%
14. <a href="http://repository.unhas.ac.id/bitstream/handle/123456789/2301/SKRIPSI.pdf">http://repository.unhas.ac.id/bitstream/handle/123456789/2301/SKRIPSI.pdf</a>	0.18%
15. <a href="http://repository.unhas.ac.id/bitstream/handle/123456789/2301/JURNAL.pdf?sequence=1">http://repository.unhas.ac.id/bitstream/handle/123456789/2301/JURNAL.pdf?sequence=1</a>	0.18%
16. <a href="https://mafiadoc.com/pengaruh-kadar-air-terhadap-tekstur-dan-warna-_59d4a5c61723dd2e6a54f2f..">https://mafiadoc.com/pengaruh-kadar-air-terhadap-tekstur-dan-warna-_59d4a5c61723dd2e6a54f2f..</a>	0.18%
17. <a href="http://novindo.co.id/2017/02/02/pengeringan-beku-freeze-drying">http://novindo.co.id/2017/02/02/pengeringan-beku-freeze-drying</a>	0.13%
18. <a href="http://repository.unpas.ac.id/14204/2/Artikel%20Volume%20%201%20Nomor%202.pdf">http://repository.unpas.ac.id/14204/2/Artikel%20Volume%20%201%20Nomor%202.pdf</a>	0.13%
19. <a href="https://westryantindaon.blogspot.com/2013/07/pengeringan.html">https://westryantindaon.blogspot.com/2013/07/pengeringan.html</a>	0.13%
20. <a href="https://docplayer.info/106377-Laporan-tetap-praktikum-mikrobiologi-umum.html">https://docplayer.info/106377-Laporan-tetap-praktikum-mikrobiologi-umum.html</a>	0.12%
21. <a href="http://repository.unika.ac.id/16601/2/14.11.0057%20Michelle%20Fernanda%20%282.11%25%29....">http://repository.unika.ac.id/16601/2/14.11.0057%20Michelle%20Fernanda%20%282.11%25%29....</a>	0.12%
22. <a href="https://www.thecroforum.org/wp-content/uploads/2015/04/CROC-CROF-RA-survey-publication-fin...">https://www.thecroforum.org/wp-content/uploads/2015/04/CROC-CROF-RA-survey-publication-fin...</a>	0.1%
23. <a href="https://cdc.confex.com/cdc/responses/irc2003/233.pdf">https://cdc.confex.com/cdc/responses/irc2003/233.pdf</a>	0.1%
24. <a href="https://www.slideshare.net/MariaPauMPHBestSelli/alcohol-and-drug-use-as-a-contributing-factor-i...">https://www.slideshare.net/MariaPauMPHBestSelli/alcohol-and-drug-use-as-a-contributing-factor-i...</a>	0.1%
25. <a href="http://www.flexmonitoring.org/wp-content/uploads/2015/04/Michigan.pdf">http://www.flexmonitoring.org/wp-content/uploads/2015/04/Michigan.pdf</a>	0.1%
26. <a href="http://studentlife.utk.edu/wp-content/uploads/sites/21/2015/07/quantitative_assessment_methods...">http://studentlife.utk.edu/wp-content/uploads/sites/21/2015/07/quantitative_assessment_methods...</a>	0.1%
27. <a href="https://nmhealth.org/data/view/behavior/673">https://nmhealth.org/data/view/behavior/673</a>	0.1%
28. <a href="http://www.compare-phc.unsw.edu.au/sites/default/files/upload/Stream%20%20%201%20Harris%20...">http://www.compare-phc.unsw.edu.au/sites/default/files/upload/Stream%20%20%201%20Harris%20...</a>	0.1%
29. <a href="http://finance.wharton.upenn.edu/departement/Seminar/2003Fall/Macro/alessandria-macro101403...">http://finance.wharton.upenn.edu/departement/Seminar/2003Fall/Macro/alessandria-macro101403...</a>	0.1%
30. <a href="https://www.archbalt.org/wp-content/uploads/2017/04/Bishop-Walsh-School10.pdf">https://www.archbalt.org/wp-content/uploads/2017/04/Bishop-Walsh-School10.pdf</a>	0.1%
31. <a href="http://www.bushfirecrc.com/sites/default/files/managed/resource/bandersen.pdf">http://www.bushfirecrc.com/sites/default/files/managed/resource/bandersen.pdf</a>	0.1%
32. <a href="https://www.ofyp.umn.edu/sites/default/files/FINAL_2011_First-Year_Assessment_Plan%20Resu...">https://www.ofyp.umn.edu/sites/default/files/FINAL_2011_First-Year_Assessment_Plan%20Resu...</a>	0.1%
33. <a href="https://www.weather.gov/media/mdl/Smith_Nov30_2011.pdf">https://www.weather.gov/media/mdl/Smith_Nov30_2011.pdf</a>	0.1%
34. <a href="http://ireta.org/wp-content/uploads/2014/11/Buprenorphine-Introduction-and-Induction.pdf">http://ireta.org/wp-content/uploads/2014/11/Buprenorphine-Introduction-and-Induction.pdf</a>	0.1%

 Similarity

 Citation

 Similarity from a chosen source

 References

 Possible character replacement

35. <a href="https://www.iosh.co.uk/~media/Documents/Books%20and%20resources/Published%20research...">https://www.iosh.co.uk/~media/Documents/Books%20and%20resources/Published%20research...</a>	0.1%
36. <a href="http://www.isaet.org/images/extraimages/IJCSEE%200101319.pdf">http://www.isaet.org/images/extraimages/IJCSEE%200101319.pdf</a>	0.1%
37. <a href="http://www.hexagon.de/pdf/sr1stat.pdf">http://www.hexagon.de/pdf/sr1stat.pdf</a>	0.1%
38. <a href="https://www.rehab.research.va.gov/jour/11/488/pdf/koontz488appn1.pdf">https://www.rehab.research.va.gov/jour/11/488/pdf/koontz488appn1.pdf</a>	0.1%
39. <a href="https://www.winchesterva.gov/sites/default/files/documents/planning-zoning/2010-planning-zoning...">https://www.winchesterva.gov/sites/default/files/documents/planning-zoning/2010-planning-zoning...</a>	0.1%
40. <a href="https://core.ac.uk/download/pdf/11053340.pdf">https://core.ac.uk/download/pdf/11053340.pdf</a>	0.1%
41. <a href="https://www.ruralbank.com.au/assets/responsive/pdf/publications/ag-answers-national-beef-updat...">https://www.ruralbank.com.au/assets/responsive/pdf/publications/ag-answers-national-beef-updat...</a>	0.1%
42. <a href="http://online.sfsu.edu/modelds/Files/References/SmithPE2006USGS-OFR.pdf">http://online.sfsu.edu/modelds/Files/References/SmithPE2006USGS-OFR.pdf</a>	0.1%
43. <a href="https://portal.ct.gov/-/media/OHS/ohca/HospitalFillings/2013/IRS990/CommunityBenefitsFY20121...">https://portal.ct.gov/-/media/OHS/ohca/HospitalFillings/2013/IRS990/CommunityBenefitsFY20121...</a>	0.1%
44. <a href="http://harbor-hme.com/site/wp-content/uploads/2016/12/Clinical-Flyer-2.pdf">http://harbor-hme.com/site/wp-content/uploads/2016/12/Clinical-Flyer-2.pdf</a>	0.1%
45. <a href="http://app.ihl.org/FacultyDocuments/Events/Event-2206/Presentation-7683/Document-5752/A6_B...">http://app.ihl.org/FacultyDocuments/Events/Event-2206/Presentation-7683/Document-5752/A6_B...</a>	0.1%
46. <a href="https://www.uwkc.org/wp-content/uploads/ftp/RacialDisparityDataReport_Nov2015.pdf">https://www.uwkc.org/wp-content/uploads/ftp/RacialDisparityDataReport_Nov2015.pdf</a>	0.1%
47. <a href="https://www.ahrq.gov/sites/default/files/wysiwyg/research/findings/nhqrdr/chartbooks/carecoordin...">https://www.ahrq.gov/sites/default/files/wysiwyg/research/findings/nhqrdr/chartbooks/carecoordin...</a>	0.1%
48. <a href="https://jscholarship.library.jhu.edu/bitstream/handle/1774.2/37319/COREY-THESIS-2014.pdf">https://jscholarship.library.jhu.edu/bitstream/handle/1774.2/37319/COREY-THESIS-2014.pdf</a>	0.1%
49. <a href="https://www.theclimategroup.org/sites/default/files/archive/files/research_UK_07.pdf">https://www.theclimategroup.org/sites/default/files/archive/files/research_UK_07.pdf</a>	0.1%
50. <a href="https://www.newyorkfed.org/medialibrary/media/education/pdf/Sbordone.pdf">https://www.newyorkfed.org/medialibrary/media/education/pdf/Sbordone.pdf</a>	0.1%
51. <a href="https://www.wto.org/spanish/res_s/statis_s/wts2016_s/WTO_Chapter_06_s.pdf">https://www.wto.org/spanish/res_s/statis_s/wts2016_s/WTO_Chapter_06_s.pdf</a>	0.1%
52. <a href="http://ageconsearch.umn.edu/bitstream/44070/2/300.pdf">http://ageconsearch.umn.edu/bitstream/44070/2/300.pdf</a>	0.1%
53. <a href="http://www.ideam.gov.co/documents/24189/120615/PROPUESTA+DE+DOCUMENTO+ENCUEN...">http://www.ideam.gov.co/documents/24189/120615/PROPUESTA+DE+DOCUMENTO+ENCUEN...</a>	0.1%
54. <a href="https://bhw.hrsa.gov/sites/default/files/bhw/nchwa/rnsurveyfinal.pdf">https://bhw.hrsa.gov/sites/default/files/bhw/nchwa/rnsurveyfinal.pdf</a>	0.1%
55. <a href="https://schoolshooters.info/sites/default/files/bullying_school_shootings_1.1.pdf">https://schoolshooters.info/sites/default/files/bullying_school_shootings_1.1.pdf</a>	0.1%
56. <a href="http://scholarcommons.usf.edu/cgi/viewcontent.cgi?article=1056&amp;context=basgp_report">http://scholarcommons.usf.edu/cgi/viewcontent.cgi?article=1056&amp;context=basgp_report</a>	0.1%
57. <a href="https://slco.org/uploadedFiles/depot/publicWorks/fwatershed/symposium2010/SedimentOxygenD...">https://slco.org/uploadedFiles/depot/publicWorks/fwatershed/symposium2010/SedimentOxygenD...</a>	0.1%
58. <a href="https://www.slideshare.net/dimvn/ecommerce-usage-in-indonesia-2016">https://www.slideshare.net/dimvn/ecommerce-usage-in-indonesia-2016</a>	0.1%
59. <a href="http://columbiaclimatelaw.com/files/2016/06/Wentz-et-al.-2016-02-Climate-Change-Considerations..">http://columbiaclimatelaw.com/files/2016/06/Wentz-et-al.-2016-02-Climate-Change-Considerations..</a>	0.1%
60. <a href="https://nmhealth.org/data/view/infectious/2103">https://nmhealth.org/data/view/infectious/2103</a>	0.1%
61. <a href="https://www.in.gov/idem/airquality/files/modeling_aermod_case_study.pdf">https://www.in.gov/idem/airquality/files/modeling_aermod_case_study.pdf</a>	0.1%
62. <a href="http://www.bwf.com/wp-content/uploads/2017/08/2017-Analytics-Survey-Article-1.pdf">http://www.bwf.com/wp-content/uploads/2017/08/2017-Analytics-Survey-Article-1.pdf</a>	0.1%
63. <a href="http://www.waketech.edu/sites/default/files/ieandresearch/2013_CCSSE_Full%20Report.pdf">http://www.waketech.edu/sites/default/files/ieandresearch/2013_CCSSE_Full%20Report.pdf</a>	0.1%
64. <a href="https://www.unicef.org.uk/babyfriendly/wp-content/uploads/sites/2/2015/01/michele_upton_breast...">https://www.unicef.org.uk/babyfriendly/wp-content/uploads/sites/2/2015/01/michele_upton_breast...</a>	0.1%
65. <a href="https://www.mmnp-journal.org/articles/mmnp/pdf/2010/06/mmnp201056p196.pdf">https://www.mmnp-journal.org/articles/mmnp/pdf/2010/06/mmnp201056p196.pdf</a>	0.1%
66. <a href="http://tensorlab.cms.caltech.edu/users/anima/pubs/Anandkumar08INFOCOM.pdf">http://tensorlab.cms.caltech.edu/users/anima/pubs/Anandkumar08INFOCOM.pdf</a>	0.1%
67. <a href="http://www.evergage.com/wp-content/uploads/2016/06/2016-Trends-in-Personalization-Survey-Re..">http://www.evergage.com/wp-content/uploads/2016/06/2016-Trends-in-Personalization-Survey-Re..</a>	0.1%
68. <a href="https://www.ithenticate.com/hs-fs/hub/92785/file-318578964-pdf/docs/ithenticate-decoding-survey...">https://www.ithenticate.com/hs-fs/hub/92785/file-318578964-pdf/docs/ithenticate-decoding-survey...</a>	0.1%
69. <a href="http://www.sedl.org/cbam/socq_manual_201410.pdf">http://www.sedl.org/cbam/socq_manual_201410.pdf</a>	0.1%
70. <a href="https://nmhealth.org/data/view/infectious/2087">https://nmhealth.org/data/view/infectious/2087</a>	0.1%
71. <a href="https://www.aicr.org/continuous-update-project/reports/breast-cancer-report-2017.pdf">https://www.aicr.org/continuous-update-project/reports/breast-cancer-report-2017.pdf</a>	0.1%
72. <a href="http://www.nec.navajo-nsn.gov/Portals/0/Reports/Vital%20Statistics%20Report%202006%20to%...">http://www.nec.navajo-nsn.gov/Portals/0/Reports/Vital%20Statistics%20Report%202006%20to%...</a>	0.1%
73. <a href="http://www.mycpm.org/wp-content/uploads/2012/08/Hulett-Integrated-Schedule-Risk-Analysis-Ris...">http://www.mycpm.org/wp-content/uploads/2012/08/Hulett-Integrated-Schedule-Risk-Analysis-Ris...</a>	0.1%
74. <a href="http://www.scielo.org.za/pdf/yt/n9/03.pdf">http://www.scielo.org.za/pdf/yt/n9/03.pdf</a>	0.1%
75. <a href="http://www.esi2.us.es/~rubio/ControlAdaptativoyRobusto.pdf">http://www.esi2.us.es/~rubio/ControlAdaptativoyRobusto.pdf</a>	0.1%
76. <a href="http://www.floridaoig.com/library/enterprise/Ethics/Reports/Ethics2011_DCA_Audit_Report_2011....">http://www.floridaoig.com/library/enterprise/Ethics/Reports/Ethics2011_DCA_Audit_Report_2011....</a>	0.1%
77. <a href="http://www.trainingshare.com/pdfs/BL_Global_AECT_06.pdf">http://www.trainingshare.com/pdfs/BL_Global_AECT_06.pdf</a>	0.1%
78. <a href="https://hql0.biomedcentral.com/articles/10.1186/s12955-015-0223-7">https://hql0.biomedcentral.com/articles/10.1186/s12955-015-0223-7</a>	0.1%
79. <a href="http://wandohigh.ccsdschools.com/UserFiles/Servers/Server_2879574/File/teacher-documents/S...">http://wandohigh.ccsdschools.com/UserFiles/Servers/Server_2879574/File/teacher-documents/S...</a>	0.1%
80. <a href="http://www.heart.org/idc/groups/heart-public/@wcm/@gra/documents/downloadable/ucm_484762...">http://www.heart.org/idc/groups/heart-public/@wcm/@gra/documents/downloadable/ucm_484762...</a>	0.1%

 Similarity

 Citation

 Similarity from a chosen source

 References

 Possible character replacement

81. <a href="https://www.energy.gov/sites/prod/files/2014/03/f9/2005_deer_erkkila.pdf">https://www.energy.gov/sites/prod/files/2014/03/f9/2005_deer_erkkila.pdf</a>	0.1%
82. <a href="https://www.maine.gov/dhhs/samhs/osa/pubs/data/2013/CSS2012ReportFinal.pdf">https://www.maine.gov/dhhs/samhs/osa/pubs/data/2013/CSS2012ReportFinal.pdf</a>	0.1%
83. <a href="http://app.ihl.org/FacultyDocuments/Events/Event-2760/Presentation-13976/Document-11528/Pre...">http://app.ihl.org/FacultyDocuments/Events/Event-2760/Presentation-13976/Document-11528/Pre...</a>	0.1%
84. <a href="https://www.cms.gov/CCIIO/Resources/Files/Downloads/mlr-report-02-15-2013.pdf">https://www.cms.gov/CCIIO/Resources/Files/Downloads/mlr-report-02-15-2013.pdf</a>	0.1%
85. <a href="http://shodhganga.inflibnet.ac.in/bitstream/10603/16546/8/08_chapter3.pdf">http://shodhganga.inflibnet.ac.in/bitstream/10603/16546/8/08_chapter3.pdf</a>	0.1%
86. <a href="https://www.slideshare.net/SoledadMalpica/ejercicios-de-da-consumo-inversin-y-gasto-de-gobierno">https://www.slideshare.net/SoledadMalpica/ejercicios-de-da-consumo-inversin-y-gasto-de-gobierno</a>	0.1%
87. <a href="https://www.amnhealthcare.com/uploadedFiles/MainSite/Content/Campaigns/AMN%20Healthcare..">https://www.amnhealthcare.com/uploadedFiles/MainSite/Content/Campaigns/AMN%20Healthcare..</a>	0.1%
88. <a href="https://www.dcjs.virginia.gov/sites/dcjs.virginia.gov/files/publications/research/virginia-crime-and-...">https://www.dcjs.virginia.gov/sites/dcjs.virginia.gov/files/publications/research/virginia-crime-and-...</a>	0.1%
89. <a href="https://dshs.texas.gov/chs/cnws/HHHCNSS/2015/2015-HHHCNSS-Recruitment-and-Retention.pdf">https://dshs.texas.gov/chs/cnws/HHHCNSS/2015/2015-HHHCNSS-Recruitment-and-Retention.pdf</a>	0.1%
90. <a href="https://www.memorialcare.org/sites/default/files/media/Joy%20Goebel%20Crossing%20the%20C...">https://www.memorialcare.org/sites/default/files/media/Joy%20Goebel%20Crossing%20the%20C...</a>	0.1%
91. <a href="https://illinois.edu/lb/files/2014/09/29/54258.pdf">https://illinois.edu/lb/files/2014/09/29/54258.pdf</a>	0.1%
92. <a href="http://www.hpoe.org/Reports-HPOE/Diversity_Disparities_14_Web.pdf">http://www.hpoe.org/Reports-HPOE/Diversity_Disparities_14_Web.pdf</a>	0.1%
93. <a href="https://scholarlyrepository.miami.edu/cgi/viewcontent.cgi?article=1858&amp;context=oa_dissertations">https://scholarlyrepository.miami.edu/cgi/viewcontent.cgi?article=1858&amp;context=oa_dissertations</a>	0.1%
94. <a href="https://www.woodridgeparks.org/pdf/Survey_2015%20Enchanted%20Ball%20web.pdf">https://www.woodridgeparks.org/pdf/Survey_2015%20Enchanted%20Ball%20web.pdf</a>	0.1%
95. <a href="https://intermountainhealthcare.org/-/media/files/research/healthcare-delivery-2005-001.pdf?la=en">https://intermountainhealthcare.org/-/media/files/research/healthcare-delivery-2005-001.pdf?la=en</a>	0.1%
96. <a href="https://www.be.unsw.edu.au/sites/default/files/upload/HazelGS_Survey_Report_FINAL.pdf">https://www.be.unsw.edu.au/sites/default/files/upload/HazelGS_Survey_Report_FINAL.pdf</a>	0.1%
97. <a href="http://qcpages.qc.cuny.edu/~rvesselinov/macro-ch07-studenthandout.pdf">http://qcpages.qc.cuny.edu/~rvesselinov/macro-ch07-studenthandout.pdf</a>	0.1%
98. <a href="http://iussp.org/sites/default/files/event_call_for_papers/Prevalence%20and%20variation%20of%...">http://iussp.org/sites/default/files/event_call_for_papers/Prevalence%20and%20variation%20of%...</a>	0.1%
99. <a href="http://www.ncpublicschools.org/docs/accountability/testing/reports/writ0405.pdf">http://www.ncpublicschools.org/docs/accountability/testing/reports/writ0405.pdf</a>	0.1%
100. <a href="http://www.uwo.edu/ceas/resources/current-students/classes/esig%20help/windows%20help%...">http://www.uwo.edu/ceas/resources/current-students/classes/esig%20help/windows%20help%...</a>	0.1%
101. <a href="https://ahsri.uow.edu.au/content/groups/public/@web/@chsd/@pcoc/documents/doc/uow23131...">https://ahsri.uow.edu.au/content/groups/public/@web/@chsd/@pcoc/documents/doc/uow23131...</a>	0.1%
102. <a href="http://luhs.org/depts/coe/projects/qf13_storyboards/trends_in_lactate_orders_and_sepsis.pdf">http://luhs.org/depts/coe/projects/qf13_storyboards/trends_in_lactate_orders_and_sepsis.pdf</a>	0.1%
103. <a href="http://ohso.ok.gov/Websites/ohso/images/DistractedDrivingFactSheets/FS2016_Distracted_Ele...">http://ohso.ok.gov/Websites/ohso/images/DistractedDrivingFactSheets/FS2016_Distracted_Ele...</a>	0.1%
104. <a href="http://www.oppaga.state.fl.us/reports/pdf/0631rpt.pdf">http://www.oppaga.state.fl.us/reports/pdf/0631rpt.pdf</a>	0.1%
105. <a href="http://ageconsearch.umn.edu/bitstream/147043/2/Farmers%20Market%20Survey.pdf">http://ageconsearch.umn.edu/bitstream/147043/2/Farmers%20Market%20Survey.pdf</a>	0.1%
106. <a href="https://www1.maine.gov/dhhs/samhs/osa/pubs/data/2013/CSS2012ReportFinal.pdf">https://www1.maine.gov/dhhs/samhs/osa/pubs/data/2013/CSS2012ReportFinal.pdf</a>	0.1%
107. <a href="https://www.business.illinois.edu/nmiller/mhec/Miller.pdf">https://www.business.illinois.edu/nmiller/mhec/Miller.pdf</a>	0.1%
108. <a href="http://discovery.ucl.ac.uk/1462097/1/Mohamed%20Abd%20Alazeez%20Thesis%20Final%20ve...">http://discovery.ucl.ac.uk/1462097/1/Mohamed%20Abd%20Alazeez%20Thesis%20Final%20ve...</a>	0.1%
109. <a href="https://cdn.wsna.org/assets/entry-assets/6062/Patient-Safety-Survey-2016.pdf">https://cdn.wsna.org/assets/entry-assets/6062/Patient-Safety-Survey-2016.pdf</a>	0.1%
110. <a href="http://jdc.jefferson.edu/cgi/viewcontent.cgi?article=1040&amp;context=nursfp">http://jdc.jefferson.edu/cgi/viewcontent.cgi?article=1040&amp;context=nursfp</a>	0.1%
111. <a href="https://www.nhtsa.gov/DOT/NHTSA/NRD/Multimedia/PDFs/Crash%20Avoidance/2003/HS80966...">https://www.nhtsa.gov/DOT/NHTSA/NRD/Multimedia/PDFs/Crash%20Avoidance/2003/HS80966...</a>	0.1%
112. <a href="http://www.ramonmillan.com/documentos/bibliografia/NegocioServiciosMoviles_IBM.pdf">http://www.ramonmillan.com/documentos/bibliografia/NegocioServiciosMoviles_IBM.pdf</a>	0.1%
113. <a href="https://filestore.scouting.org/filestore/marketing/pdf/02-849.pdf">https://filestore.scouting.org/filestore/marketing/pdf/02-849.pdf</a>	0.1%

**Excluded as citation or reference Web sources: 18 sources found**

1. <a href="http://eprints.ums.ac.id/41291/1/NASKAH%20PUBLIKASI.pdf">http://eprints.ums.ac.id/41291/1/NASKAH%20PUBLIKASI.pdf</a>	0.35%
2. <a href="http://repository.usu.ac.id/bitstream/handle/123456789/58853/Chapter%20II.pdf;sequence=4">http://repository.usu.ac.id/bitstream/handle/123456789/58853/Chapter%20II.pdf;sequence=4</a>	0.15%
3. <a href="http://repository.usu.ac.id/bitstream/handle/123456789/39482/Chapter%20II.pdf?sequence=4&amp;isAl...">http://repository.usu.ac.id/bitstream/handle/123456789/39482/Chapter%20II.pdf?sequence=4&amp;isAl...</a>	0.15%
4. <a href="https://inniizzati.blogspot.com/2014/12/paper-agroklimatologi-hubungan-suhu.html">https://inniizzati.blogspot.com/2014/12/paper-agroklimatologi-hubungan-suhu.html</a>	0.13%
5. <a href="https://el-casper-bancekone.blogspot.com/2014/04/tinjauan-pustaka-suhu-rendah.html">https://el-casper-bancekone.blogspot.com/2014/04/tinjauan-pustaka-suhu-rendah.html</a>	0.13%
6. <a href="https://nelaeskaputri.blogspot.com/2011/12/pengaruh-pemberian-cmc-carboxy-methyl.html">https://nelaeskaputri.blogspot.com/2011/12/pengaruh-pemberian-cmc-carboxy-methyl.html</a>	0.13%
7. <a href="http://darsatop.lecture.ub.ac.id/2015/0">http://darsatop.lecture.ub.ac.id/2015/0</a>	0.13%
8. <a href="http://www.phariyadi.staff.ipb.ac.id/files/2013/02/Freeze-Drying-Technology-foodreview-vol-viii-no-2...">http://www.phariyadi.staff.ipb.ac.id/files/2013/02/Freeze-Drying-Technology-foodreview-vol-viii-no-2...</a>	0.12%
9. <a href="https://repository.ipb.ac.id/jspui/bitstream/123456789/11999/4/F07rsu.pdf">https://repository.ipb.ac.id/jspui/bitstream/123456789/11999/4/F07rsu.pdf</a>	0.12%
10. <a href="http://repository.unpas.ac.id/27347/2/ARTIKEL%20pdf.pdf">http://repository.unpas.ac.id/27347/2/ARTIKEL%20pdf.pdf</a>	0.1%