

CHAPTER 4

ANALYSIS AND DESIGN

4.1 Analysis

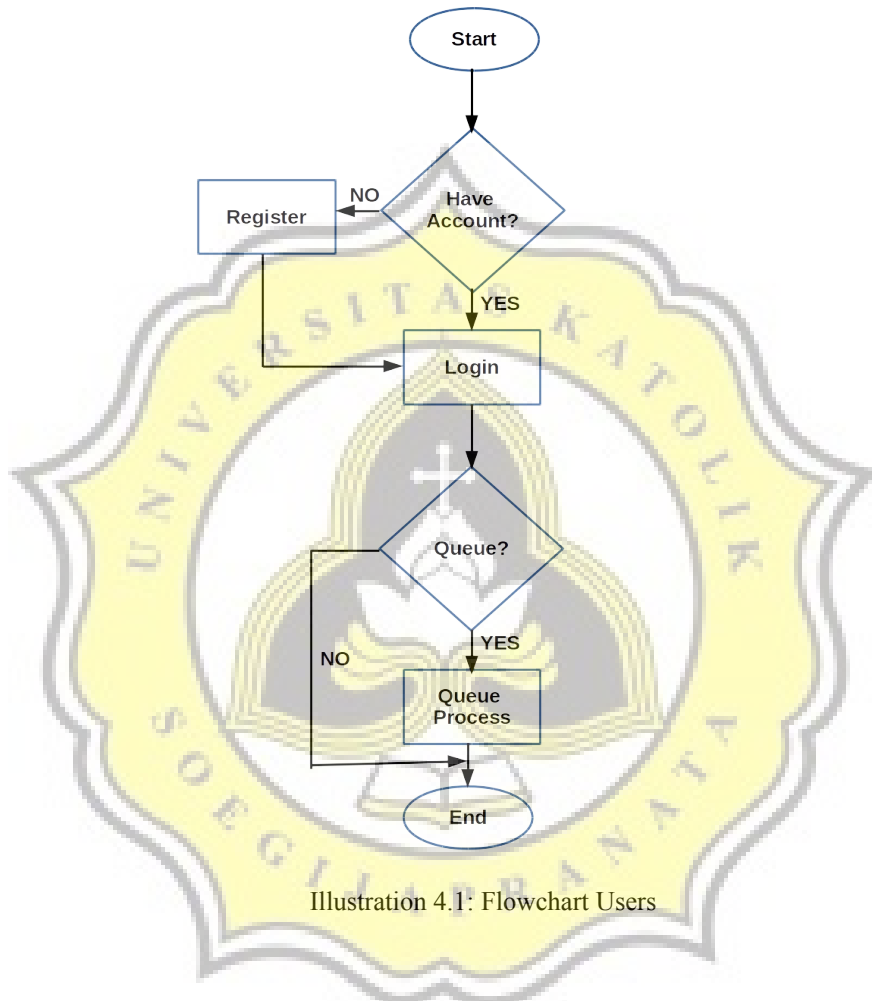


Illustration 4.1: Flowchart Users

In accordance with the user flowchart above the user will enter into registration form first, whether it has a user account or not. If the user does not have an account then user must first fill out the registration form. After registering the account, then user can login to application. After login whether the user wants to queue up, if yes then it will go into queue view in the application and press the queue button to start the queue. With user getting the queue number and the user just waiting for the user queue number in the call from admin.

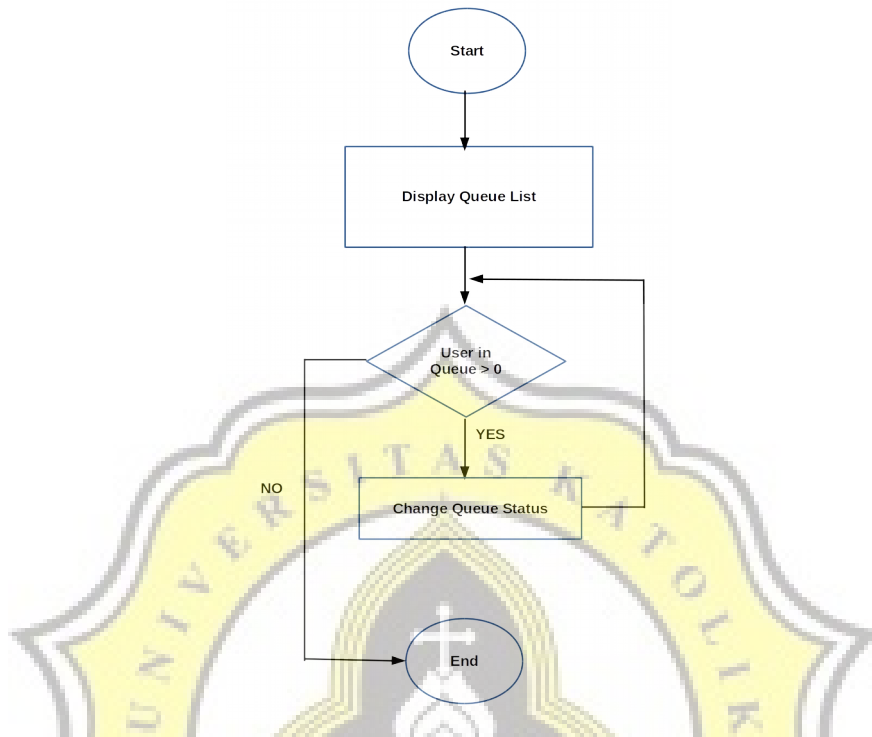


Illustration 4.2: Flowchart User Queue Process

According to the flowchart above describes the process in the queue. First the application will check the location of the user application and the destination location. If it has been obtained, otherwise it will be obtained first it will be calculated the distance from the location of the users who are located and the destination location. Once a new distance gets put into the queue. After all users queue up then the admin will sort queue data based on user distance. Only then will the user get their own queue number and wait for the queue number that each user requested from the application.

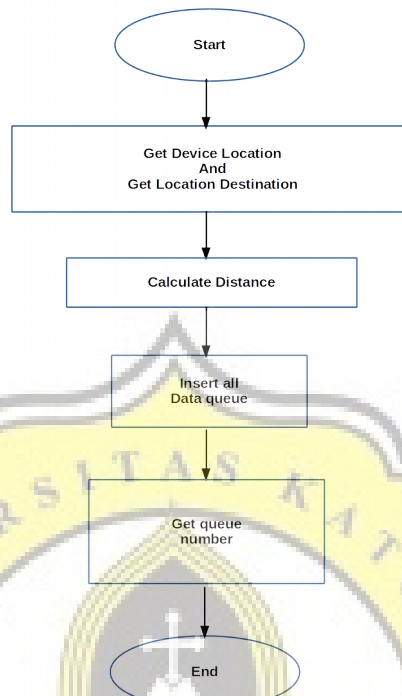


Illustration 4.3: Flowchart Admin Check Queue List

According to the flowchart above, admin first of all do login first. When after a successful login, the admin will check whether the user has to queue. If the user has already queued then the admin can change the user status while waiting in line. So users can find out what number is queuing up and the number of users right now. Admin can see the history of anyone who has already queued up before.

4.2 Desain

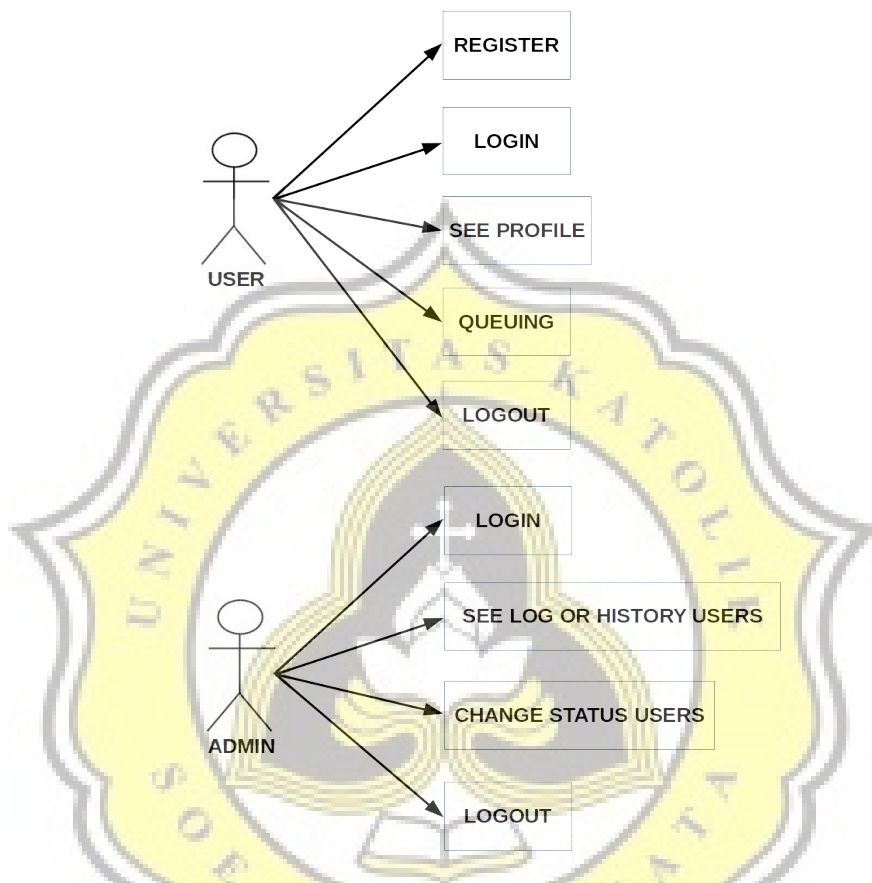


Illustration 4.4: Use Case Diagram

This illustration explain about user and admin task, user can register and login at the application. User can see the profile and look the queue. In queue user, user can request queue in the application and get the queue number. And user can logout too from the application.

Role of admin it's can login, after that admin can see the log or history from user queuing. And then admin can call the user and change user status, and admin can logout too from the application.