

CHAPTER 5

IMPLEMENTATION AND TESTING

5.1 Implementation

5.1.1. Google Maps API Process Data

This project has a feature that is integrated with google maps. The feature is google places Library. Google Places is a function library for connecting applications to find a place in google maps. for example, such as finding a place that has the highest rating in the region. to use this library, the user must enter the API key in html like the example on Figure 5.1.1

```
<script src="https://maps.googleapis.com/maps/api/js?region=ID&language=ID&key=AIzaSyB4nw2-e_CgCd-dsUUCoZUH_kT-CRs0NuI&callback=initMap&signed_in=true&libraries=places,visualization" async defer></script>
```

Figure 5.1.1: Google Maps Api Key

```
function addMarker1(place) {  
    var service2 = new google.maps.places.PlacesService(map);  
    service2.getDetails(place, function(results, status) {  
        /*if (status !== google.maps.places.PlacesServiceStatus.OK) {  
            console.error(status);  
            return;  
        }*/  
  
        if(results.opening_hours.periods[1].open.time >= 0600 && results.opening_hours.periods[1].open.time <= 1000)  
        {  
  
            var marker = new google.maps.Marker  
            ({  
                map: map,  
                position: place.geometry.location,  
  
            });  
        }  
    });  
}
```

Figure 5.1.2: Process Data Filter

Figure 5.1.2 shows the code for displaying the data into the map obtained from the google API. This code is used to categorize the culinary attractions based on the operating hours from 6 to 10 to display the map/

```

function addResult(result, marker) {

    var cek = listMarkerSidebar.indexOf(result.name);
    console.log(cek);
    if(cek == -1)
    {
        //console.log(result.name);

        listMarkerSidebar.push(result.name);

        var results = document.getElementById('results');
        var markerIcon = MARKER_PATH;
        var tr = document.createElement('tr');

        tr.onclick = function() {
            google.maps.event.trigger(marker, 'click');
        };

        var iconTd = document.createElement('td');
        var nameTd = document.createElement('td');
        var icon = document.createElement('img');
        icon.src = markerIcon;
        icon.setAttribute('class', 'placeIcon');
        icon.setAttribute('className', 'placeIcon');

        var name = document.createTextNode(result.name);

        iconTd.appendChild(icon);
        nameTd.appendChild(name);

        tr.appendChild(iconTd);
        tr.appendChild(nameTd);
        results.appendChild(tr);
    }
}

```

Figure 5.1.3: Process Showing List Sidebar Marker

Figure 5.1.3 shows the code for displaying the data marker list panel on right side.

5.2 Testing

After program is completed, then testing program as follows:

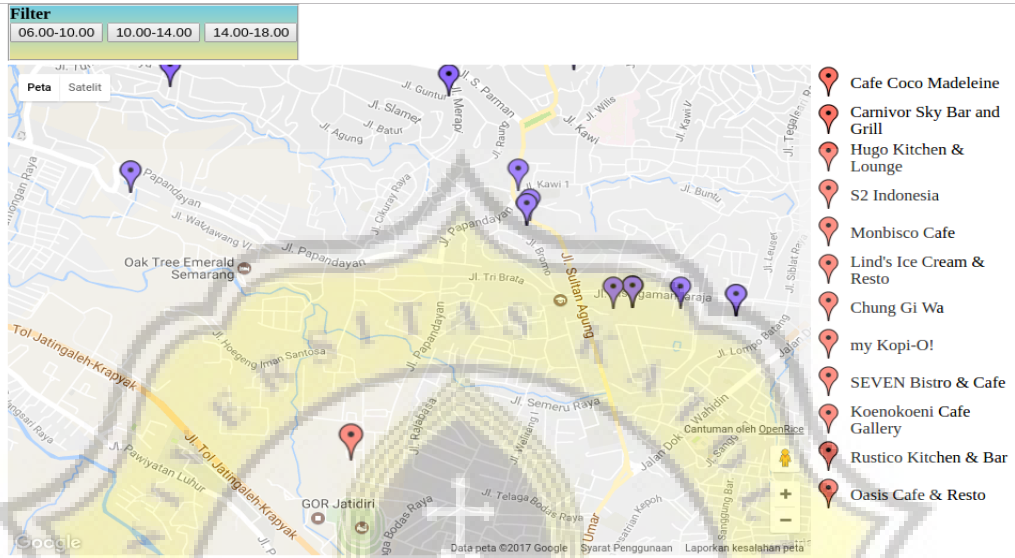


Figure 5.2.1: Main Menu

The image above is the starting point of the program from the user's location that has led to all locations before filter operating hours where the culinary tourism around Semarang.

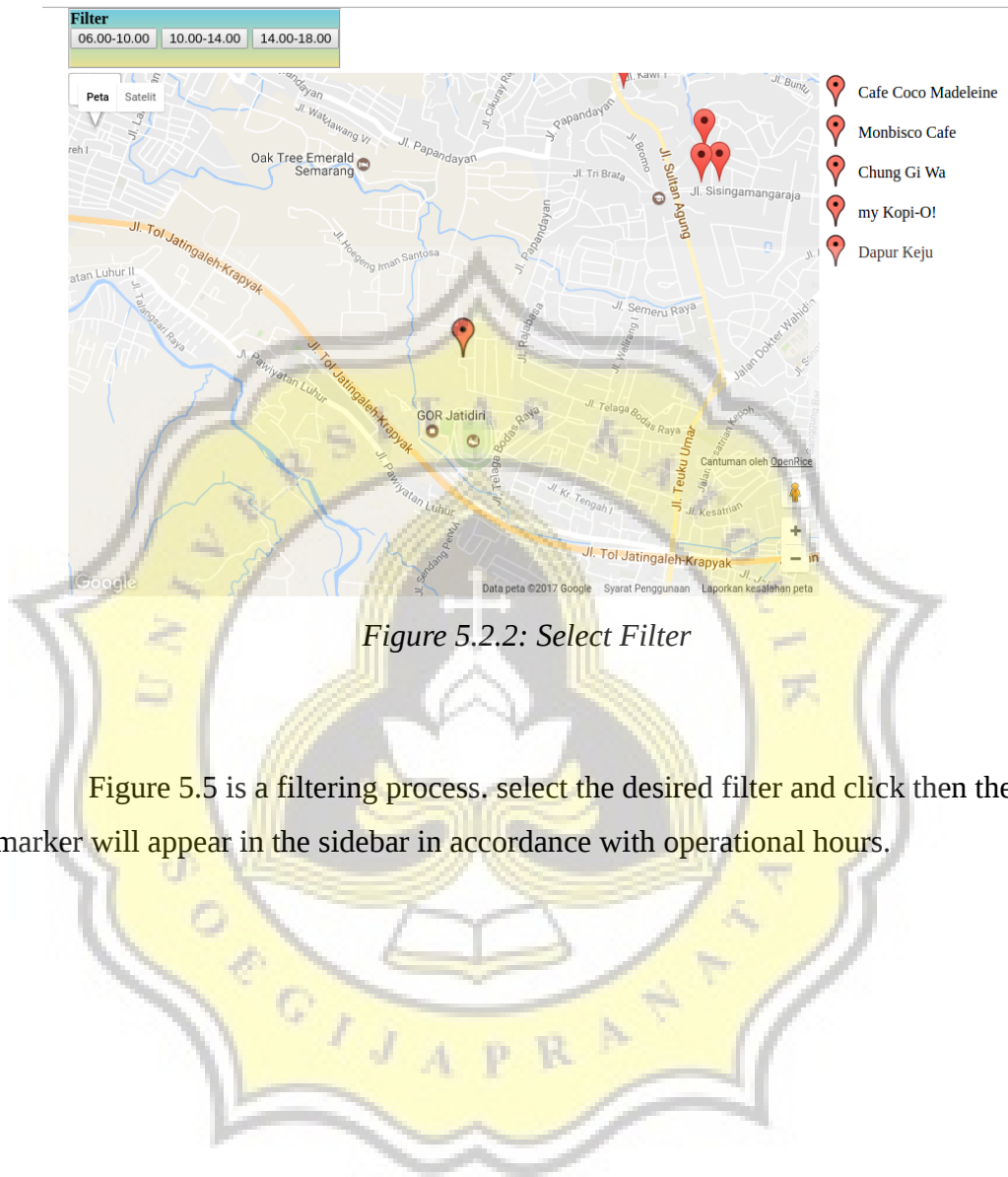


Figure 5.2.2: Select Filter

Figure 5.5 is a filtering process. select the desired filter and click then the marker will appear in the sidebar in accordance with operational hours.

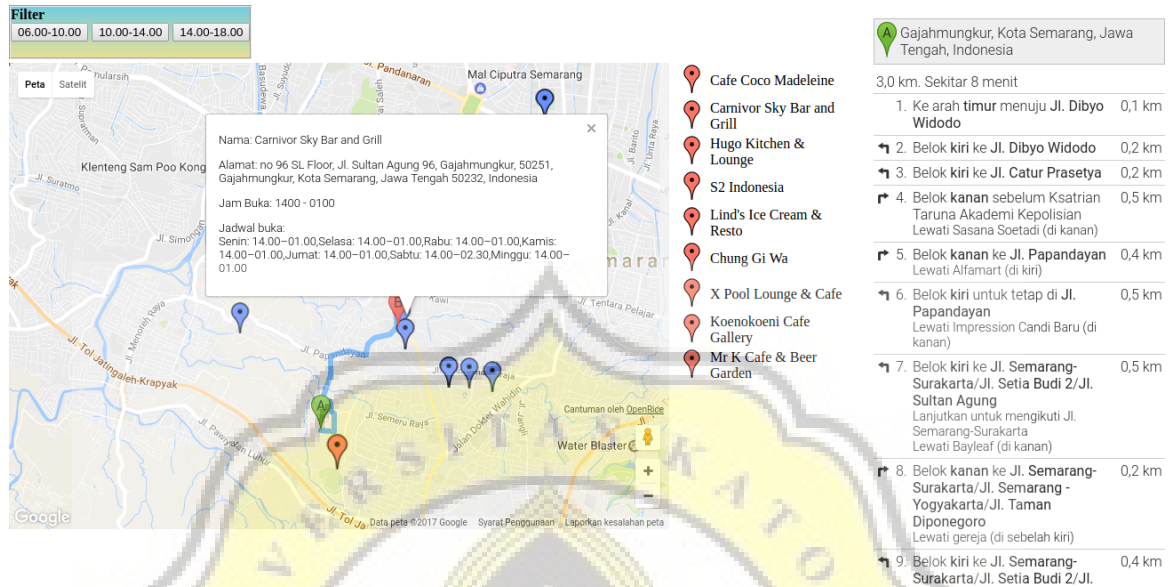


Figure 5.2.3: Showing infowindow and route distance from current location user.

the image above displays after the user selects a filter and choose where the intended recipients will perform the information from the site and indicate the route distance from the user to the position.