

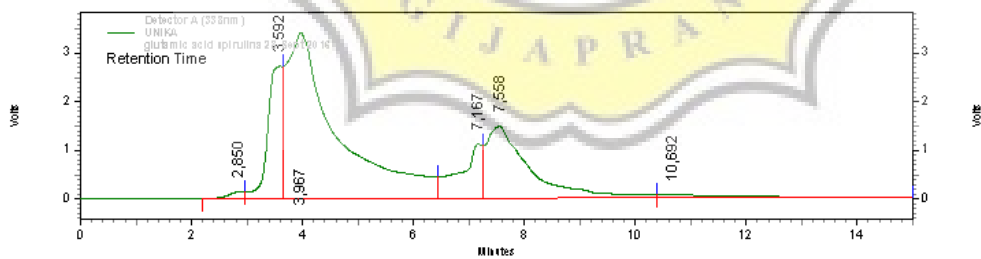
7. LAMPIRAN

Lampiran 1. Dokumentasi Bahan Biomassa *Spirulina* Kering

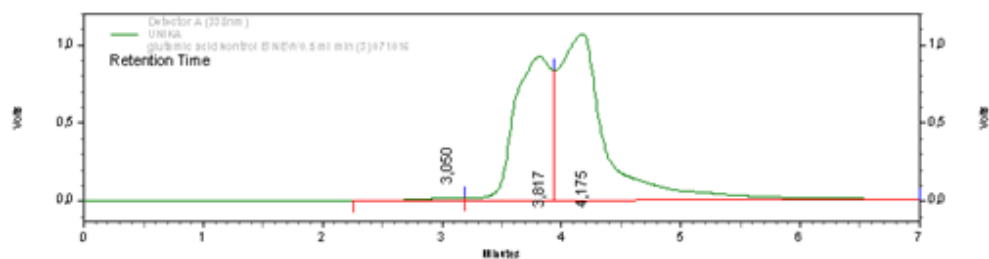


Lampiran 2. Hasil Kromatografi Analisis Kadar Asam Glutamat

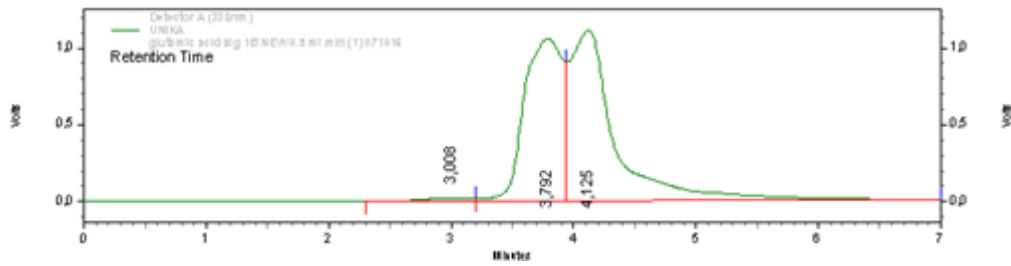
- Biomassa *Spirulina* Kering



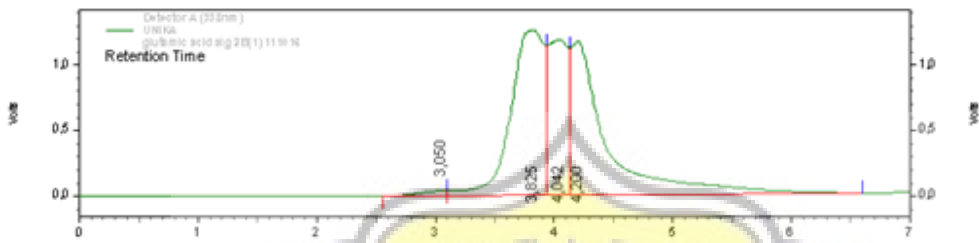
- Perlakuan Natrium Alginat 0% (Kontrol)



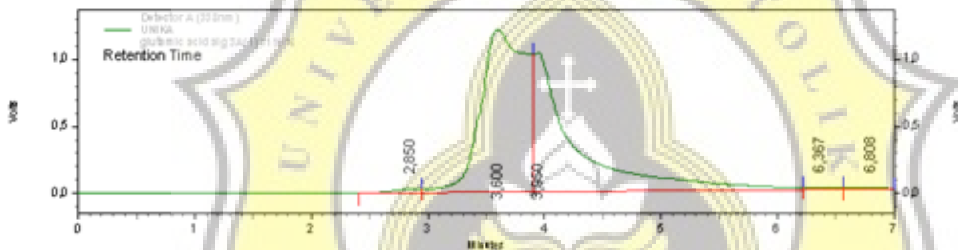
- Perlakuan Natrium Alginat 1%



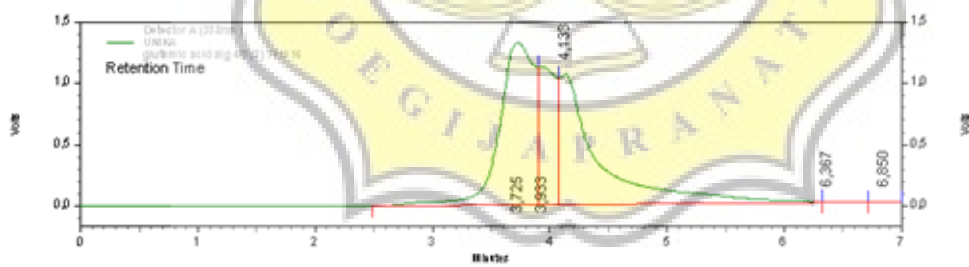
- Perlakuan Natrium Alginat 2%



- Perlakuan Natrium Alginat 3%



- Perlakuan Natrium Alginat 4%



Lampiran 3. Analisis Data Hasil Pengujian menggunakan SPSS

- Uji Normalitas Data

Tests of Normality

Konsentrasi Alginat		Kolmogorov-Smirnov ^a			Shapiro-Wilk		
		Statistic	df	Sig.	Statistic	df	Sig.
Kadar_Air	Kontrol	.184	6	.200 [*]	.957	6	.799
	Alginat 1%	.298	6	.103	.873	6	.237
	Alginat 2%	.214	6	.200 [*]	.958	6	.804
	Alginat 3%	.266	6	.200 [*]	.912	6	.453
	Alginat 4%	.190	6	.200 [*]	.938	6	.640
Higroskopisitas	Kontrol	.211	6	.200 [*]	.935	6	.619
	Alginat 1%	.186	6	.200 [*]	.928	6	.563
	Alginat 2%	.194	6	.200 [*]	.964	6	.847
	Alginat 3%	.266	6	.200 [*]	.903	6	.390
	Alginat 4%	.149	6	.200 [*]	.961	6	.829
Flowability	Kontrol	.153	6	.200 [*]	.963	6	.843
	Alginat 1%	.175	6	.200 [*]	.958	6	.804
	Alginat 2%	.226	6	.200 [*]	.913	6	.457
	Alginat 3%	.190	6	.200 [*]	.956	6	.787
	Alginat 4%	.212	6	.200 [*]	.934	6	.614
Kelarutan	Kontrol	.162	6	.200 [*]	.945	6	.701
	Alginat 1%	.238	6	.200 [*]	.894	6	.340
	Alginat 2%	.122	6	.200 [*]	.982	6	.961
	Alginat 3%	.220	6	.200 [*]	.894	6	.339
	Alginat 4%	.203	6	.200 [*]	.932	6	.595

a. Lilliefors Significance Correction

*. This is a lower bound of the true significance.

- Uji Homogenitas Data

Test of Homogeneity of Variance

		Levene Statistic	df1	df2	Sig.
Kadar_Air	Based on Mean	1.316	4	25	.291
	Based on Median	.436	4	25	.781
	Based on Median and with adjusted df	.436	4	14.303	.780
	Based on trimmed mean	1.227	4	25	.325
Higroskopisitas	Based on Mean	2.197	4	25	.098
	Based on Median	1.838	4	25	.153
	Based on Median and with adjusted df	1.838	4	13.994	.178
	Based on trimmed mean	2.163	4	25	.103
Flowability	Based on Mean	.376	4	25	.824
	Based on Median	.302	4	25	.874
	Based on Median and with adjusted df	.302	4	22.202	.874
	Based on trimmed mean	.365	4	25	.831
Kelarutan	Based on Mean	2.247	4	25	.093
	Based on Median	1.408	4	25	.260
	Based on Median and with adjusted df	1.408	4	11.536	.292
	Based on trimmed mean	2.235	4	25	.094

- Uji *One-way ANOVA*

ANOVA

		Sum of Squares	df	Mean Square	F	Sig.
Kadar_Air	Between Groups	40.115	4	10.029	96.308	.000
	Within Groups	2.603	25	.104		
	Total	42.719	29			
Higroskopisitas	Between Groups	2174.172	4	543.543	293.236	.000
	Within Groups	46.340	25	1.854		
	Total	2220.512	29			
Flowability	Between Groups	127.455	4	31.864	442.678	.000
	Within Groups	1.799	25	.072		
	Total	129.255	29			
Kelarutan	Between Groups	8776.555	4	2194.139	594.338	.000
	Within Groups	92.293	25	3.692		
	Total	8868.848	29			
Kadar_Asam_Glutamat	Between Groups	.001	4	.000	5.200	.050
	Within Groups	.000	5	.000		
	Total	.001	9			

- Uji Duncan Kadar Air

Kadar_Air

Duncan

Konsentra si Alginat	N	Subset for alpha = 0.05			
		1	2	3	4
Alginat 4%	6	1.4500			
Alginat 3%	6		2.0000		
Alginat 2%	6			3.0333	
Alginat 1%	6				4.1500
Kontrol	6				4.4000
Sig.		1.000	1.000	1.000	.192

Means for groups in homogeneous subsets are displayed.

- Uji Duncan Higroskopisitas

Higroskopisitas

Duncan

Konsentra si Alginat	N	Subset for alpha = 0.05		
		1	2	3
Kontrol	6	2.5183E1		
Alginat 1%	6	2.6150E1		
Alginat 2%	6	2.6483E1		
Alginat 3%	6		3.4183E1	
Alginat 4%	6			4.7700E1
Sig.		.130	1.000	1.000

Means for groups in homogeneous subsets are displayed.

- Uji Duncan *Flowability*

Flowability

Duncan						
Konsentra si Alginat	N	Subset for alpha = 0.05				
		1	2	3	4	5
Alginat 4%	6	2.9698E1				
Alginat 3%	6		3.2786E1			
Alginat 2%	6			3.4006E1		
Alginat 1%	6				3.5039E1	
Kontrol	6					3.5427E1
Sig.		1.000	1.000	1.000	1.000	1.000

Means for groups in homogeneous subsets are displayed.

- Uji Duncan Kelarutan

Kelarutan

Duncan					
Konsentra si Alginat	N	Subset for alpha = 0.05			
		1	2	3	4
Alginat 4%	6	51.0667			
Alginat 3%	6		76.9333		
Kontrol	6			79.4667	
Alginat 1%	6				97.3333
Alginat 2%	6				97.8000
Sig.		1.000	1.000	1.000	.678

Means for groups in homogeneous subsets are displayed.

- Uji Duncan Kadar Asam Glutamat

Kadar_Asam_Glutamat

Duncan			
Konsentra si Alginat	N	Subset for alpha = 0.05	
		1	2
Kontrol	2	.0900	
Alginat 1%	2		.1100
Alginat 2%	2		.1100
Alginat 3%	2		.1150
Alginat 4%	2		.1200
Sig.		1.000	.229

Means for groups in homogeneous subsets are displayed.