



LIMA BESAR KAP DI BEJ

	AFILIASI	KLIEN	AUDITOR
Prasetio Sarwoko & Sandjaja (PSS)	Ernst & Young	113	1129
Hans Tuanakotta & Mustofa (HTM)	Deloitte Touche Tohmatsu	67	522
Amir Abadi Jusuf & Aryanto (AAJ)	RSM Internasional	23	43
Hadi Susanto & Rekan (HS & R)	PricewaterhouseCoopers	16	215
Johan Malonda	Nexia Internasional	15	139

Sumber: Majalah Auditor Edisi 09 / 2003



Peringkat Penjamin Emisi Efek
Berdasarkan Jumlah Emisi Saham
Periode Tahun 1999-2002

No	Nama	Jumlah Nilai Emisi
1	Bahana Securities	Rp 1.554.154.000.000
2	Danareksa Sekuritas	Rp 1.521.598.000.000
3	Trimegah Securities Tbk	Rp 877.512.000.000
4	Dinamika Usahajaya	Rp 471.097.000.000
5	CLSA Indonesia	Rp 412.500.000.000
6	BNP Prime East	Rp 367.575.000.000
7	Usaha Bersama Sekuritas	Rp 233.760.000.000
8	Bhakti Capital Indonesia	Rp 207.219.000.000
9	Ciptadana Sekuritas	Rp 194.184.350.000
10	Makindo	Rp 135.800.000.000
11	Syahrir Securities	Rp 135.800.000.000
12	Agung Securities Indonesia	Rp 134.200.000.000
13	Asia Kapitalindo Securities	Rp 124.750.000.000
14	Danatama Securities	Rp 120.000.000.000
15	Asjaya Indosurya Securities	Rp 109.000.000.000
16	Sinarmas Sekuritas	Rp 100.000.000.000
17	Panin Sekuritas Tbk	Rp 99.250.000.000
18	Sukorinvest Central Gani	Rp 93.000.000.000
19	Harita Kencana Securities	Rp 85.750.000.000
20	Mahanusa Kapital	Rp 60.000.000.000
21	Victoria Kapitalindo Internasional	Rp 59.250.000.000
22	Makinta Securities	Rp 57.500.000.000
23	Pridana Futura Centra Investama	Rp 55.000.000.000
24	EXIM Securities	Rp 52.500.000.000
25	Merincorp Securities	Rp 52.500.000.000
26	Senra Investindo	Rp 52.500.000.000
27	Dhanawibawa Arthacemerlang	Rp 48.500.000.000
28	Peregrine Sewu Securities	Rp 45.000.000.000
29	Andalan Advisindo Sekuritas	Rp 41.125.000.000
30	Rifan Financindo Sekuritas	Rp 38.850.000.000
31	Millenium Atlantic Securities	Rp 38.650.000.000
32	Kapita Sekurindo	Rp 35.450.000.000
33	Artha Securities Tbk	Rp 35.000.000.000
34	Kresna Graha Sekurindo	Rp 33.403.000.000
35	Victoria Sekuritas	Rp 29.700.000.000
36	Lippo Securities	Rp 27.500.000.000
37	Harumdana Sekuritas	Rp 27.000.000.000
38	Jaya Visindo Artha Sek.	Rp 15.000.000.000
39	General Capital Indonesia	Rp 15.000.000.000
	TOTAL	Rp 7.796.577.350.000
	RATA-RATA	Rp 199.912.239.744

Data Penelitian Siap Olah

No	Code	Penyusutan (Peny)	Persediaan (Persed)	% Saham (SHM)	KAP	Underwriter (UDW)	Umur (UMR)	Ukuran (UKR)	ROA	FL	dependent (UP)
1	CKRA	1	1	68,15	1	0	104	10,7753	0,0133	0,59	0,6
2	BASS	1	1	73,60	0	0	123	12,1031	0,0089	0,51	0,5
3	TIRT	1	1	67,95	0	1	224	11,9618	0,0047	3,01	0,95
4	ADFO	1	0	51,30	1	0	119	12,1162	0,0551	5,35	0,85
5	TBLA	1	1	78,91	1	1	314	13,5003	0,0976	2,51	0,091
6	DSFI	1	1	71,05	1	1	317	11,6516	0,0436	0,70	0,277
7	SIMM	1	0	70,00	1	1	44	11,6798	0,0877	0,37	0,95
8	KPIG	1	1	81,71	0	0	117	11,5468	0,0067	0,42	1,9
9	APLI	1	1	76,91	1	1	92	12,0734	0,0611	0,55	0,833
10	FMII	1	0	80,00	1	1	132	12,0793	0,0734	0,16	0,65
11	GMTD	1	1	82,55	1	0	115	12,1199	0,0959	4,51	0,826
12	PLAS	1	1	60,00	0	0	104	10,0129	0,0314	0,42	1,55
13	WAPO	1	1	61,54	1	0	94	10,3465	0,1380	0,61	1,886
14	ARNA	1	1	77,23	1	0	77	12,0863	0,0231	3,15	0,167
15	LAPD	1	0	72,10	0	0	133	9,26065	0,0375	7,41	1,25
16	LAMI	1	0	93,03	1	1	162	12,3361	0,0401	0,58	0,92
17	META	1	0	86,21	0	0	70	9,9635	-1,2380	0,47	0,175
18	BTON	1	1	63,88	1	0	77	10,146	0,0137	1,20	1,625
19	AIMS	1	1	63,64	0	0	50	9,49882	0,0089	0,80	1,92
20	PANR	1	1	90,00	1	1	74	11,5386	0,0890	0,96	0,25
21	PYFA	0	1	76,93	1	1	299	11,0987	0,0219	0,48	0,905
22	CENT	1	0	81,82	0	1	177	10,7507	0,1033	0,13	2,04
23	IATG	1	0	75,00	1	1	81	11,2659	0,0231	0,30	1,2
24	CLPI	1	0	84,00	0	0	158	9,87678	0,2485	0,66	1,05
25	CITA	0	0	74,98	0	0	117	10,5603	-0,0458	4,00	0,7
26	FPNI	1	0	83,57	1	0	171	12,35	0,1436	0,81	0,1
27	ABBA	1	1	95,10	0	0	113	10,8137	-0,0460	0,37	0,66
28	SUGI	1	1	75,00	0	0	147	10,8868	0,0156	0,70	0,66
29	PTBA	1	1	84,97	1	1	249	14,4678	0,1418	0,47	0,044



Regression

Variables Entered/Removed^a

Model	Variables Entered	Variables Removed	Method
1	LEVERAGE, UMUR, KAP, PERSEDIAAN, PENYUSUTAN, SAHAM, ROA, UNDERWRITER, Ln(TOTAL ASSETS)		Enter

a. All requested variables entered.

b. Dependent Variable: UNDERPRICE

Model Summary^b

Model	R	R Square	Adjusted R Square	Std. Error of the Estimate	Durbin-Watson
1	,770 ^a	,593	,400	,4597	2,051

a. Predictors: (Constant), LEVERAGE, UMUR, KAP, PERSEDIAAN, PENYUSUTAN, SAHAM, ROA, UNDERWRITER, Ln(TOTAL ASSETS)

b. Dependent Variable: UNDERPRICE

ANOVA^b

Model		Sum of Squares	df	Mean Square	F	Sig.
1	Regression	5,855	9	,651	3,078	,019 ^a
	Residual	4,015	19	,211		
	Total	9,870	28			

a. Predictors: (Constant), LEVERAGE, UMUR, KAP, PERSEDIAAN, PENYUSUTAN, SAHAM, ROA, UNDERWRITER, Ln(TOTAL ASSETS)

b. Dependent Variable: UNDERPRICE

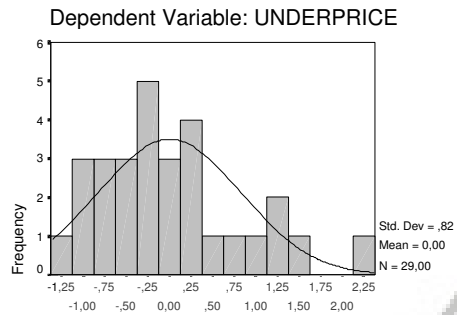
Coefficients^a

Model		Unstandardized Coefficients		Standardized Coefficients	t	Sig.	Collinearity Statistics	
		B	Std. Error	Beta			Tolerance	VIF
1	(Constant)	5,261	1,121		4,694	,000		
	PERSEDIAAN	-,006	,197	-,005	-,032	,975	,801	1,248
	PENYUSUTAN	,104	,367	,045	,282	,781	,842	1,187
	SAHAM	-,017	,010	-,283	-1,657	,114	,734	1,362
	KAP	-,318	,226	-,269	-1,405	,176	,586	1,707
	UNDERWRITER	,292	,244	,246	1,198	,246	,507	1,974
	UMUR	-,002	,002	-,199	-1,027	,317	,569	1,758
	Ln(TOTAL ASSETS)	-,253	,112	-,499	-2,267	,035	,442	2,265
	ROA	,895	,385	,374	2,325	,031	,829	1,206
LEVERAGE	-,045	,056	-,139	-,818	,423	,747	1,339	

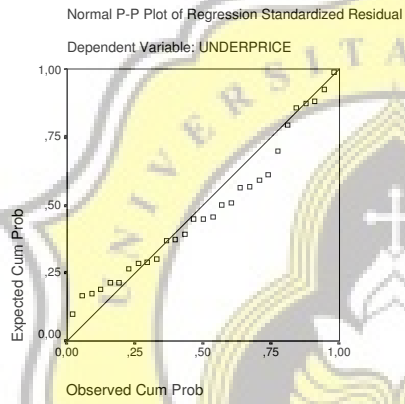
a. Dependent Variable: UNDERPRICE

Charts

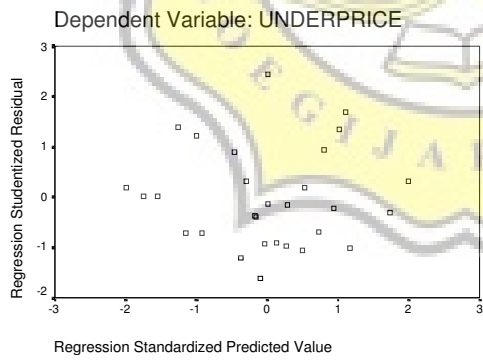
Histogram



Regression Standardized Residual



Scatterplot



Uji Heteroskedastisitas (Gleyser)

Variables Entered/Removed^b

Model	Variables Entered	Variables Removed	Method
1	LEVERAGE, UMUR, KAP, PERSEDIAAN, PENYUSUTAN, SAHAM, ROA, UNDERWRITER, Ln(TOTAL ASSETS) ^a		Enter

a. All requested variables entered.

b. Dependent Variable: E

Model Summary

Model	R	R Square	Adjusted R Square	Std. Error of the Estimate
1	,519 ^a	,269	-,077	,2433

a. Predictors: (Constant), LEVERAGE, UMUR, KAP, PERSEDIAAN, PENYUSUTAN, SAHAM, ROA, UNDERWRITER, Ln(TOTAL ASSETS)

ANOVA^b

Model		Sum of Squares	df	Mean Square	F	Sig.
1	Regression	,414	9	4,603E-02	,778	,639 ^a
	Residual	1,125	19	5,918E-02		
	Total	1,539	28			

a. Predictors: (Constant), LEVERAGE, UMUR, KAP, PERSEDIAAN, PENYUSUTAN, SAHAM, ROA, UNDERWRITER, Ln(TOTAL ASSETS)

b. Dependent Variable: E

Coefficients^a

Model		Unstandardized Coefficients		Standardized Coefficients	t	Sig.
		B	Std. Error	Beta		
1	(Constant)	,1629	,593		,275	,786
	PERSEDIAAN	,0542	,104	,114	,522	,608
	PENYUSUTAN	,0147	,194	,016	,076	,940
	SAHAM	,0071	,005	,309	1,350	,193
	KAP	,0247	,120	,053	,206	,839
	UNDERWRITER	-,1192	,129	-,255	-,925	,367
	UMUR	-,0001	,001	-,040	-,155	,879
	Ln(TOTAL ASSETS)	-,0325	,059	-,162	-,549	,589
	ROA	,3568	,204	,377	1,752	,096
LEVERAGE	-,0297	,029	-,229	-1,011	,325	

a. Dependent Variable: E

Descriptives

Descriptive Statistics

	N	Minimum	Maximum	Mean	Std. Deviation
SAHAM	29	51,30	95,10	75,9010	10,14078
UMUR	29	44,00	317,00	139,7931	74,94445
Ln(TOTAL ASSETS)	29	9,26	14,47	11,3403	1,16988
ROA	29	-1,24	,25	,0103	,24790
LEVERAGE	29	,13	7,41	1,4552	1,81136
UNDERPRICE	29	,04	2,04	,8803	,59373
Valid N (listwise)	29				

Frequency Table

PERSEDIAAN

		Frequency	Percent	Valid Percent	Cumulative Percent
Valid	0	11	37,9	37,9	37,9
	1	18	62,1	62,1	100,0
	Total	29	100,0	100,0	

PENYUSUTAN

		Frequency	Percent	Valid Percent	Cumulative Percent
Valid	0	2	6,9	6,9	6,9
	1	27	93,1	93,1	100,0
	Total	29	100,0	100,0	

KAP

		Frequency	Percent	Valid Percent	Cumulative Percent
Valid	0	12	41,4	41,4	41,4
	1	17	58,6	58,6	100,0
	Total	29	100,0	100,0	

UNDERWRITER

		Frequency	Percent	Valid Percent	Cumulative Percent
Valid	0	17	58,6	58,6	58,6
	1	12	41,4	41,4	100,0
	Total	29	100,0	100,0	

Uji Normalitas

One-Sample Kolmogorov-Smirnov Test

		Unstandardized Residual
N		29
Normal Parameters a,b	Mean	1,124010E-09
	Std. Deviation	,3786915
Most Extreme Differences	Absolute	,125
	Positive	,125
	Negative	-,084
Kolmogorov-Smirnov Z		,674
Asymp. Sig. (2-tailed)		,754

a. Test distribution is Normal.

b. Calculated from data.

