

LAMPIRAN D-1

Data Penelitian Angket Kecenderungan Histeria



	x01	x02	x03	x05	x06	x07	x08	x09	x10	x11	x12	x14	x16	x17	x18	x19	x20
	1	1	1	2	4	2	2	3	2	1	2	3	3	4	3	2	2
	2	2	4	2	2	1	3	4	3	3	4	1	4	3	1	2	1
	1	1	1	1	4	1	1	1	1	4	2	1	1	1	4	1	4
	1	2	1	2	4	1	1	3	3	1	4	2	1	2	2	1	1
	2	3	1	1	3	1	3	3	1	2	2	2	2	2	2	1	1
	2	2	2	2	3	2	2	2	2	3	2	2	3	2	3	2	3
	1	2	1	2	4	2	3	2	3	3	4	1	4	1	2	4	4
	1	1	2	2	4	3	2	3	3	3	2	2	3	2	2	3	1
	2	2	2	2	3	3	3	3	2	2	3	2	2	3	3	2	2
	3	3	1	2	3	3	2	3	3	2	4	3	3	3	4	1	1
	1	2	3	1	3	1	1	2	1	2	4	2	2	3	3	4	1
	1	3	3	1	3	2	1	2	1	2	4	2	2	2	3	4	2
	1	3	3	1	3	1	1	2	1	1	3	2	2	1	3	4	2
	1	3	3	1	3	1	1	2	1	1	4	3	2	1	3	4	2
5	1	2	1	3	4	2	1	3	3	2	4	2	2	2	3	3	1
5	1	2	2	3	2	2	2	3	2	2	3	3	3	2	2	3	2
7	1	1	1	2	3	1	2	2	2	4	3	2	1	1	1	1	3
3	1	1	1	1	4	1	2	4	3	3	4	1	1	1	1	2	1
9	1	3	3	1	3	1	1	2	1	1	3	2	1	1	4	4	1
0	2	2	2	2	3	2	1	3	2	1	4	3	2	2	3	3	3
1	1	2	3	2	3	2	2	3	2	3	3	2	3	2	3	2	3
2	1	2	3	2	3	2	2	2	2	3	3	2	3	2	3	2	3
3	1	2	1	2	3	2	2	2	2	2	3	2	3	2	3	1	3
4	1	2	1	2	3	2	2	3	2	2	3	2	3	2	3	2	3
5	1	2	1	2	3	1	2	2	2	3	3	2	3	2	3	2	3
6	1	2	1	2	1	2	1	2	2	2	1	1	1	2	3	1	2
7	2	2	2	2	3	2	2	1	2	2	3	2	1	1	1	2	2
8	2	1	1	3	3	2	3	2	2	2	2	2	1	3	1	2	2
9	2	1	2	2	1	2	2	1	2	3	2	2	2	1	2	2	2
0	2	2	2	2	1	2	2	3	2	2	2	3	2	2	1	1	2
1	1	1	2	1	1	1	2	2	2	1	1	1	2	1	1	1	1

	x21	x22	x23	x24	x25	x26	x27	x28	x29	x30	x31	x32	x35	x36	x38	x39	x41
1	3	3	3	2	2	3	2	3	2	4	2	3	3	2	2	2	2
2	2	2	2	3	1	3	2	2	2	2	4	2	1	3	1	3	4
3	1	4	4	1	1	4	1	1	1	1	1	4	4	1	1	1	1
4	1	4	3	3	1	4	2	1	3	4	3	1	2	1	2	2	3
5	1	4	3	2	1	2	1	3	2	2	2	4	3	4	1	3	2
6	2	3	2	3	3	2	2	2	2	3	3	3	2	3	2	2	2
7	2	3	4	4	3	3	4	4	3	3	4	4	2	4	3	2	4
8	2	4	4	3	2	2	2	2	2	4	1	4	2	3	3	4	3
9	2	2	2	3	2	2	2	2	2	2	2	4	3	2	2	3	3
10	2	4	2	3	2	4	3	2	3	1	3	2	3	2	2	2	2
11	1	2	3	3	1	2	4	3	3	2	3	2	4	4	3	1	4
12	1	3	3	3	1	2	4	2	3	2	3	3	3	4	3	2	3
13	2	3	3	2	2	2	4	2	2	2	2	2	3	4	3	1	2
14	2	4	3	3	1	2	4	3	3	2	2	2	3	4	3	1	4
15	2	4	4	3	2	2	3	4	3	4	2	2	3	3	3	2	3
16	3	3	2	2	3	3	2	3	2	3	3	2	2	3	3	2	3
17	2	2	1	3	2	3	3	1	1	2	2	4	2	1	1	3	3
18	3	4	3	4	1	1	2	2	1	1	1	4	1	2	1	3	4
19	2	4	3	3	1	2	4	3	3	2	2	2	2	4	2	4	2
20	2	3	2	3	3	2	3	2	3	2	2	3	3	3	3	2	3
21	2	3	2	2	2	2	2	3	2	1	2	2	3	2	2	2	2
22	2	3	2	2	2	1	2	3	3	2	2	3	3	3	3	3	2
23	2	4	2	2	2	2	2	3	2	1	2	3	2	1	2	3	2
24	2	4	2	2	2	2	2	2	2	1	2	1	2	2	2	2	2
25	2	3	2	3	3	1	2	3	2	2	1	4	3	2	2	3	2
26	2	1	1	2	1	2	1	2	1	3	2	1	2	2	2	1	2
27	2	2	2	1	2	2	1	2	2	2	1	1	2	2	2	2	3
28	3	2	1	2	2	3	2	2	2	2	3	2	3	3	2	3	2
29	3	2	1	1	2	2	3	1	1	1	1	2	2	2	2	2	2
30	2	2	1	3	2	1	3	2	1	1	1	2	2	2	2	2	2
31	1	1	1	2	1	2	1	1	3	1	1	1	1	1	1	2	2

	x43	x44	x45	x46	x50	x51	x52	x53	x55	x56	x57	x58	x59	x60	his	pd
1	2	2	2	2	3	2	2	2	2	2	2	2	1	2	109	122
2	1	2	3	1	3	4	2	4	1	1	2	2	1	3	111	97
3	1	1	4	1	1	1	1	1	1	1	1	1	1	1	79	127
4	1	1	3	4	3	4	4	4	3	1	2	2	1	1	106	114
5	1	1	4	1	4	1	2	2	3	1	1	2	2	1	98	115
6	3	3	3	2	2	3	2	3	3	2	2	2	3	2	115	113
7	2	4	2	3	2	1	3	2	3	4	2	1	2	3	133	109
8	3	2	3	2	2	3	2	2	3	3	3	2	1	2	119	115
9	3	2	2	2	4	3	3	2	2	2	2	2	2	2	114	101
0	2	2	3	3	1	3	3	2	2	2	2	3	3	2	119	100
11	3	2	2	2	3	3	2	3	2	2	1	2	4	1	113	140
12	2	2	3	2	3	3	2	2	3	1	2	2	3	2	115	137
13	2	2	3	2	3	2	2	2	2	2	3	2	3	2	107	143
14	3	2	3	2	3	2	2	2	4	1	2	2	3	2	115	145
15	2	2	2	2	2	2	3	2	1	1	2	2	2	2	115	112
16	2	2	3	3	3	2	2	3	2	2	3	3	2	2	117	107
17	1	1	1	2	3	4	3	2	3	1	3	3	1	3	98	94
18	1	1	1	1	1	3	4	4	3	1	2	1	1	2	96	108
19	1	1	3	2	2	2	1	3	1	1	2	2	1	1	101	139
20	3	3	3	2	2	2	2	3	1	1	1	3	1	1	112	104
21	2	2	3	2	2	2	4	3	3	1	2	3	1	3	110	125
22	2	3	3	3	2	2	4	2	1	2	3	2	3	2	115	128
23	2	2	2	1	2	2	2	2	2	1	2	3	2	1	99	128
24	3	2	2	2	1	2	4	3	3	1	3	1	1	1	101	127
25	2	2	3	2	2	2	4	3	1	2	3	3	3	2	111	128
26	1	1	1	1	2	1	2	1	2	2	1	1	1	3	75	98
27	3	2	2	2	2	3	2	2	3	2	3	2	2	2	95	120
28	2	2	1	2	3	3	2	3	2	2	2	2	2	2	103	126
29	2	2	1	2	2	1	2	2	2	2	2	2	2	2	87	102
30	2	2	1	2	2	1	2	2	2	2	2	2	3	2	91	93
31	1	1	1	1	1	1	1	2	2	1	1	1	1	1	60	142

x01	x02	x03	x05	x06	x07	x08	x09	x10	x11	x12	x14	x16	x17	x18	x19	x20
2	1	2	2	1	2	2	3	2	1	2	3	2	2	1	1	2
4	2	3	3	4	2	3	3	4	2	2	2	1	2	4	3	4
3	3	3	3	3	3	3	3	3	3	3	3	3	4	3	2	3
1	1	2	2	2	2	2	1	1	1	2	1	1	1	2	1	1
2	1	2	2	1	2	2	1	2	1	2	2	2	1	2	2	2
3	3	3	3	3	3	3	3	3	3	3	3	3	4	3	2	3
4	2	3	2	1	3	3	1	4	2	3	2	3	3	3	1	4
4	2	3	2	1	3	3	1	4	2	3	2	3	3	3	1	4
1	1	2	2	2	2	2	1	2	1	2	1	1	1	2	1	1
4	4	2	3	1	2	3	2	4	4	4	2	4	2	2	1	4
1	2	2	3	3	2	3	2	2	1	4	2	4	2	2	1	3
2	3	2	3	2	3	2	2	2	3	2	1	1	1	1	1	2
2	3	2	3	3	3	2	2	2	3	2	1	1	1	1	1	2
2	2	2	2	3	2	2	1	2	2	3	2	1	1	1	2	2
2	2	1	2	3	1	2	2	2	2	3	2	1	1	2	3	2
2	1	1	3	3	2	3	2	2	1	2	2	1	3	1	2	2
1	1	2	1	1	1	2	2	1	1	1	1	2	1	1	1	1
1	1	1	2	1	2	1	2	1	1	1	1	1	2	3	1	1
2	2	1	2	3	1	2	2	2	2	3	2	1	1	2	3	2
1	3	2	2	3	2	2	1	1	3	3	3	3	3	2	1	1



x21	x22	x23	x24	x25	x26	x27	x28	x29	x30	x31	x32	x35	x36	x38	x39	x41
1	2	1	3	2	1	3	2	1	1	1	2	2	2	2	2	2
2	4	2	3	4	2	2	3	3	1	2	3	4	3	3	2	3
3	3	3	3	3	3	4	3	3	4	3	3	4	3	3	3	4
1	1	1	1	1	2	1	3	2	1	3	2	1	2	2	2	2
1	2	1	1	2	2	3	1	1	1	1	2	2	2	2	2	2
3	3	3	3	3	3	4	3	3	4	3	3	4	3	3	3	4
2	4	2	1	4	3	1	3	3	2	3	2	3	3	3	3	3
2	4	2	1	4	3	1	3	3	2	3	2	3	3	3	3	3
1	1	1	1	1	2	1	3	2	1	3	2	1	2	2	2	2
4	4	4	2	4	4	1	3	4	1	1	4	4	3	2	3	2
1	4	4	2	1	4	1	3	4	1	1	4	4	3	2	3	2
3	2	3	2	2	1	1	2	1	2	2	1	2	3	3	2	2
3	2	3	2	2	1	1	2	1	2	2	1	2	3	3	2	2
2	2	2	1	2	2	1	2	2	2	1	1	2	2	2	2	3
2	2	2	2	2	1	1	2	3	2	2	1	2	2	1	2	2
1	2	1	2	2	3	2	2	2	2	3	2	3	3	2	3	2
2	1	1	2	2	2	1	1	3	1	1	1	1	1	1	2	2
1	1	1	2	1	2	1	2	1	3	2	1	2	2	2	1	2
2	2	2	2	2	2	1	1	2	3	2	2	1	2	2	1	2
1	3	1	3	1	1	3	2	1	2	3	3	1	2	2	2	3

x43	x44	x45	x46	x50	x51	x52	x53	x55	x56	x57	x58	x59	x60	his	pd
2	2	1	2	2	1	2	2	2	2	2	2	3	2	88	131
3	3	3	3	1	2	2	2	3	4	3	4	1	4	132	99
3	3	3	3	3	4	3	3	4	3	3	3	3	3	150	69
2	1	1	2	2	2	2	2	2	1	2	1	1	1	74	136
2	2	1	2	2	1	2	2	2	2	2	2	2	2	83	132
3	3	3	3	3	4	3	3	4	3	3	3	3	3	150	95
3	4	2	1	3	1	3	3	3	4	3	4	2	4	129	101
3	4	2	1	3	1	3	3	3	3	3	4	2	4	128	107
2	1	1	2	2	2	2	2	2	2	2	1	1	3	78	135
4	4	4	1	3	1	2	3	2	4	4	4	2	4	140	98
4	4	4	1	3	1	2	3	2	1	4	3	2	3	120	107
2	2	3	2	3	2	3	2	2	2	2	2	1	2	97	127
2	2	3	2	3	2	3	2	2	2	2	2	1	2	98	124
3	2	2	2	2	3	2	2	3	2	3	2	2	2	95	128
3	2	2	1	2	3	1	2	2	2	3	2	2	2	93	129
2	2	1	2	3	3	2	3	2	2	2	2	2	2	100	119
1	1	1	1	1	1	1	2	2	1	1	3	1	3	66	139
1	1	1	1	2	1	2	1	2	1	1	1	1	1	67	139
3	2	2	1	2	3	1	2	2	2	3	2	2	2	93	130
2	1	3	1	2	3	2	2	3	1	2	1	3	1	99	123

LAMPIRAN D-2

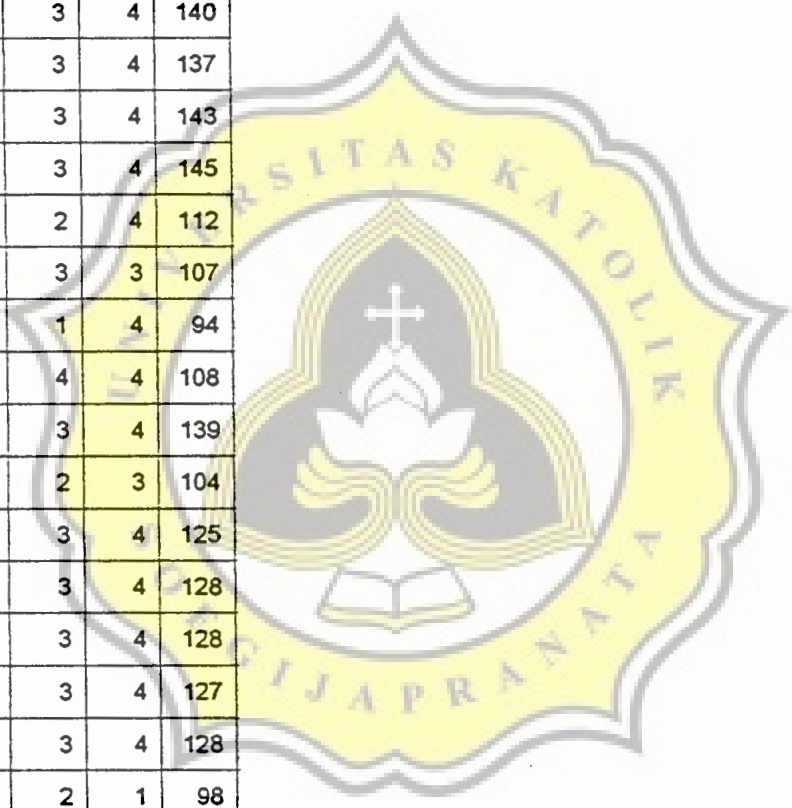
**Data Penelitian
Angket Penyesuaian Diri**



	x01	x02	x03	x04	x06	x07	x08	x10	x12	x13	x14	x15	x16	x17	x19	x20	x21
1	3	3	2	3	3	3	4	3	2	2	3	3	3	4	4	4	4
2	4	4	1	2	2	4	1	3	2	3	2	1	3	2	2	1	3
3	4	4	1	2	2	4	1	2	3	3	4	3	2	4	4	2	4
4	4	4	2	2	4	2	1	2	3	3	4	3	4	4	2	4	3
5	3	4	2	2	4	1	3	2	3	4	4	2	3	1	3	2	2
6	3	2	1	3	3	3	3	2	3	3	3	2	2	3	3	3	3
7	3	2	2	2	2	2	3	3	2	2	3	2	3	4	2	3	3
8	4	1	2	2	2	4	2	2	3	3	4	3	2	4	4	2	3
9	3	3	2	2	2	2	3	2	3	2	3	2	2	3	2	2	3
10	4	3	3	2	2	2	2	2	3	2	4	4	2	2	4	2	3
11	3	4	3	4	4	4	4	2	4	4	4	3	3	3	3	4	3
12	3	4	3	4	4	4	4	2	4	4	4	3	3	3	3	3	4
13	3	4	3	4	4	4	4	3	4	4	4	4	4	3	3	3	4
14	3	4	3	4	4	4	4	2	3	4	4	4	4	4	3	4	4
15	4	3	1	2	4	2	2	3	3	3	3	4	3	3	2	3	3
16	3	2	2	3	3	3	2	3	3	3	3	2	3	3	2	2	3
17	2	3	2	1	2	4	3	1	2	2	4	2	1	4	3	2	2
18	3	2	4	3	4	1	2	1	3	3	4	4	3	4	2	3	1
19	3	4	3	4	4	4	4	2	4	4	4	4	4	3	3	3	3
20	2	3	3	3	2	3	3	2	3	3	3	2	3	2	3	3	3
21	3	3	2	2	3	3	4	3	3	3	4	3	3	3	4	3	3
22	3	3	2	2	2	3	4	3	3	4	4	3	3	4	4	3	3
23	3	3	2	2	2	3	4	3	3	4	4	3	3	4	4	3	3
24	3	3	2	2	2	3	4	3	3	4	4	3	3	4	4	3	3
25	3	3	2	2	2	3	4	3	3	4	4	3	3	4	4	3	3
26	3	4	1	3	3	2	3	1	3	3	2	3	2	3	3	3	4
27	3	4	2	3	2	4	3	4	3	3	3	3	4	3	2	3	3
28	3	2	3	4	3	3	4	3	3	3	3	4	3	3	3	3	3
29	2	3	3	1	3	2	2	4	2	2	2	2	2	3	1	4	4
30	2	2	2	3	2	1	3	2	3	4	3	3	2	2	4	1	3
31	3	3	4	4	4	4	4	3	3	4	3	3	3	4	4	4	3

	x22	x23	x24	x25	x26	x28	x30	x31	x32	x33	x34	x35	x36	x37	x38	x40	x41	
1	2	3	3	2	1	3	3	2	4	4	3	4	4	3	3	3	1	
2	2	3	1	2	4	3	3	4	3	1	3	1	3	4	2	1	2	
3	2	4	3	3	1	3	1	4	1	4	4	4	4	4	4	4	3	
4	2	3	4	1	2	2	2	4	3	1	4	4	2	3	3	3	2	
5	1	4	2	1	3	2	2	2	2	4	4	3	3	4	3	3	4	
6	2	3	3	3	2	3	3	3	3	3	3	3	3	2	2	3	3	
7	3	3	2	2	3	3	3	2	3	1	4	3	3	2	3	3	3	
8	2	4	3	3	2	4	2	3	2	2	3	3	3	2	3	3	2	
9	4	1	4	3	1	2	2	2	2	3	2	3	2	2	3	2	4	
10	2	4	1	2	3	3	1	3	1	1	1	3	4	3	4	2	1	
11	3	4	3	3	3	4	3	3	3	3	4	4	4	3	2	3	3	
12	3	3	4	2	3	3	3	3	2	3	4	4	4	3	2	3	3	
13	3	4	4	3	2	2	3	4	3	3	4	4	4	4	2	3	3	
14	3	4	3	3	3	4	3	4	3	3	4	4	4	4	2	3	3	
15	3	4	3	3	2	3	2	4	2	3	2	2	2	3	2	2	2	
16	3	3	3	2	1	3	3	2	2	2	3	3	3	3	3	2	3	
17	1	4	1	2	2	1	1	3	1	4	4	2	1	1	4	1	2	
18	1	2	4	3	1	3	1	3	3	3	4	4	1	2	4	1	2	
19	2	2	4	3	2	2	3	4	2	3	4	4	4	4	3	3	4	
20	3	3	2	1	2	4	1	4	3	3	2	3	3	4	3	1	2	
21	3	3	3	3	3	3	3	4	2	2	4	4	3	4	3	3	3	
22	3	3	3	3	3	3	3	4	2	2	4	4	4	4	3	3	3	
23	3	3	3	3	3	3	3	4	2	2	4	4	3	4	3	3	3	
24	3	3	3	3	3	3	3	4	2	2	4	4	3	4	3	3	3	
25	3	3	3	3	3	3	3	4	2	2	4	4	4	4	3	3	3	
26	2	2	1	2	2	2	2	3	1	3	3	3	2	2	3	2	2	
27	3	3	3	3	1	2	3	2	3	2	3	3	4	2	3	3	3	
28	3	3	3	4	3	4	3	3	2	4	3	4	3	3	3	3	3	
29	2	2	4	1	3	1	4	2	2	4	3	1	2	3	2	1	4	
30	1	2	3	2	2	3	3	2	1	1	2	3	2	2	2	4	2	
31	4	3	4	4	4	4	4	4	3	3	3	4	4	3	4	3	2	3

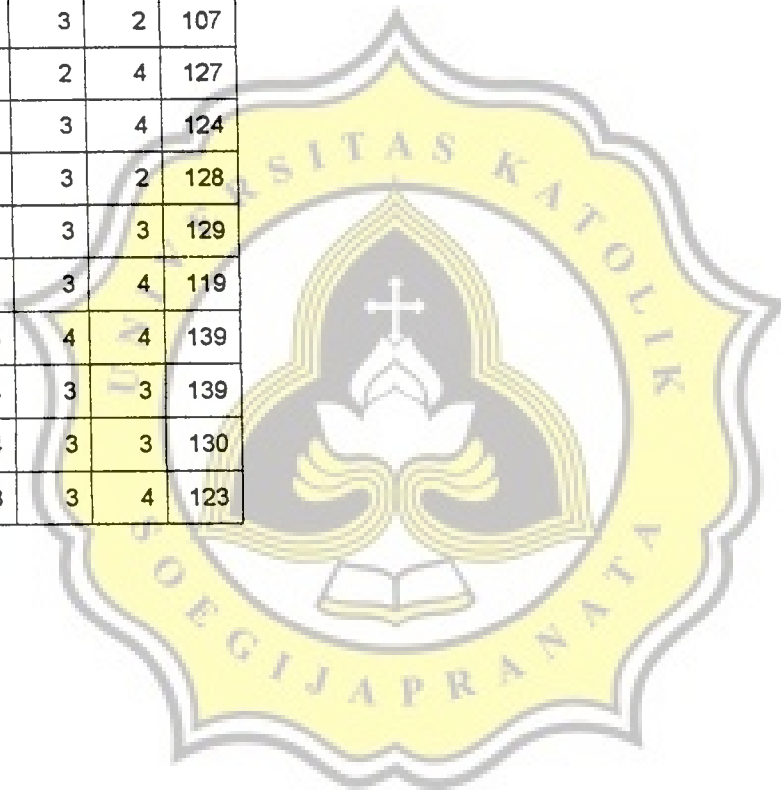
x42	x43	x44	x45	x46	x47	x48	pd	
3	3	3	3	3	2	4	122	
2	4	1	2	2	1	3	97	
1	4	4	4	4	4	4	127	
3	3	2	2	4	2	2	114	
4	4	3	2	3	3	4	115	
3	3	3	3	3	3	3	113	
1	3	3	3	3	3	4	109	
4	4	1	2	4	3	4	115	
2	2	3	3	2	3	3	101	
3	1	1	2	4	3	1	100	
4	4	4	4	3	3	4	140	
4	4	4	4	3	3	4	137	
4	4	4	4	3	3	4	143	
4	4	4	4	3	3	4	145	
3	2	3	3	3	2	4	112	
2	2	3	2	3	3	3	107	
4	3	3	1	3	1	4	94	
4	3	1	1	2	4	4	108	
4	4	4	4	3	3	4	139	
2	1	2	1	3	2	3	104	
2	3	2	3	3	3	4	125	
2	3	3	3	3	3	4	128	
2	3	3	3	4	3	4	128	
2	3	3	3	3	3	4	127	
2	3	3	3	3	3	4	128	
2	3	2	2	3	2	1	98	
3	2	4	3	2	4	4	120	
3	3	3	3	2	3	2	3	126
4	4	1	2	2	3	3	102	
1	3	1	3	2	2	2	93	
4	3	2	4	3	3	4	142	



x01	x02	x03	x04	x06	x07	x08	x10	x12	x13	x14	x15	x16	x17	x19	x20	x21
4	3	3	3	3	3	3	3	3	4	4	3	4	3	3	4	3
2	1	3	3	3	2	4	3	4	2	2	3	2	3	3	2	3
1	2	1	3	3	1	1	1	2	3	3	2	2	1	2	4	2
3	3	3	3	3	3	3	3	3	4	3	3	3	3	4	3	4
3	4	4	2	2	4	4	3	3	4	3	1	3	4	4	4	4
1	4	1	1	2	3	2	3	3	2	1	2	2	1	3	3	2
2	3	2	3	2	3	4	3	3	1	2	3	2	2	2	2	2
3	2	2	2	2	3	4	3	3	4	3	2	4	2	3	3	3
4	3	3	3	3	3	2	3	4	3	4	3	3	3	4	3	3
1	1	4	2	2	3	4	2	3	2	1	2	2	4	3	4	2
2	3	3	2	2	3	4	3	3	2	2	3	2	3	2	2	2
3	2	4	2	4	1	3	4	3	4	3	3	4	4	1	4	2
4	2	3	4	3	2	3	3	3	2	2	3	4	4	3	3	2
5	4	3	2	2	4	4	3	4	3	3	4	3	4	2	3	3
6	3	3	3	2	2	4	3	3	4	3	3	3	3	4	3	3
7	3	2	2	1	3	3	4	3	3	4	4	2	4	1	3	4
8	3	4	4	2	3	4	4	3	2	3	3	2	4	4	3	4
9	4	3	3	3	4	4	3	3	4	3	4	2	3	3	3	4
0	4	3	3	3	4	3	2	3	4	3	4	3	2	3	3	3
1	3	3	4	3	3	4	4	3	2	3	3	3	3	4	3	2

x22	x23	x24	x25	x26	x28	x30	x31	x32	x33	x34	x35	x36	x37	x38	x40	x41
3	3	2	3	3	3	3	4	3	3	3	3	3	3	4	3	3
2	2	1	2	3	3	1	2	2	1	3	3	2	3	2	3	3
1	4	2	1	1	1	1	2	1	1	2	1	1	2	1	1	1
3	3	4	3	3	3	4	4	3	3	4	3	4	4	3	4	3
2	3	3	3	4	3	3	4	3	3	3	4	3	2	3	3	3
2	1	3	2	1	3	2	3	2	3	3	4	3	3	1	3	2
3	2	3	2	2	3	3	3	3	2	2	3	3	2	2	3	3
2	3	3	2	2	3	3	2	2	2	3	4	3	1	3	2	3
3	4	4	4	3	4	3	3	4	3	3	3	4	3	4	3	4
2	1	2	3	4	2	2	2	3	2	3	3	3	2	1	2	2
3	2	3	2	3	2	2	3	3	2	3	3	3	2	2	2	3
1	3	2	3	4	3	4	4	4	4	4	2	3	4	3	3	4
3	2	4	4	4	4	2	4	3	4	4	3	4	2	2	4	3
4	4	2	3	2	4	2	3	4	4	2	2	3	4	4	3	4
4	3	4	4	3	4	4	3	3	4	3	2	3	2	3	4	3
1	2	4	2	4	4	1	4	3	3	4	4	3	2	3	2	3
4	3	4	4	4	2	4	4	4	4	4	4	4	2	3	1	3
4	4	3	4	3	4	4	4	3	2	3	3	3	4	4	4	3
3	4	3	3	3	2	3	4	3	4	3	3	3	4	4	3	3
4	3	4	1	4	2	3	4	4	2	4	3	3	3	3	3	3

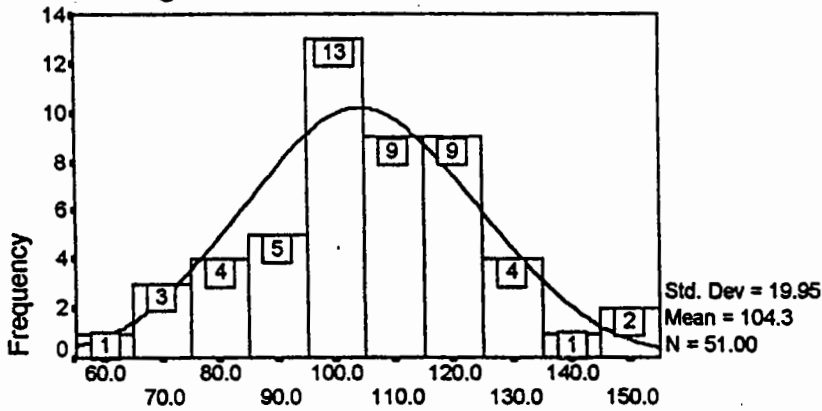
x42	x43	x44	x45	x46	x47	x48	pd
4	3	3	3	4	3	3	131
2	3	1	3	3	1	3	99
2	1	2	1	2	1	2	69
3	4	3	4	3	4	3	136
3	3	3	4	3	4	4	132
2	3	2	2	2	4	3	95
2	2	2	3	2	3	2	101
3	3	3	2	2	2	1	107
3	3	4	3	3	3	3	135
2	3	2	2	2	2	4	98
3	4	4	3	2	3	2	107
4	2	3	3	3	2	4	127
3	2	3	3	2	3	4	124
3	3	3	2	4	3	2	128
3	3	3	3	3	3	3	129
4	3	2	2	3	3	4	119
4	4	4	3	3	4	4	139
4	4	4	1	4	3	3	139
3	3	3	3	4	3	3	130
2	1	3	3	3	3	4	123



The logo of Universitas Katolik Soegijapranata is a yellow shield-shaped emblem with a scalloped border. Inside the shield, there is a central figure of a dove with its wings spread, perched on an open book. Above the dove is a cross. The text "UNIVERSITAS KATOLIK" is written in a semi-circle at the top, and "SOEGIJAPRANATA" is written in a semi-circle at the bottom.

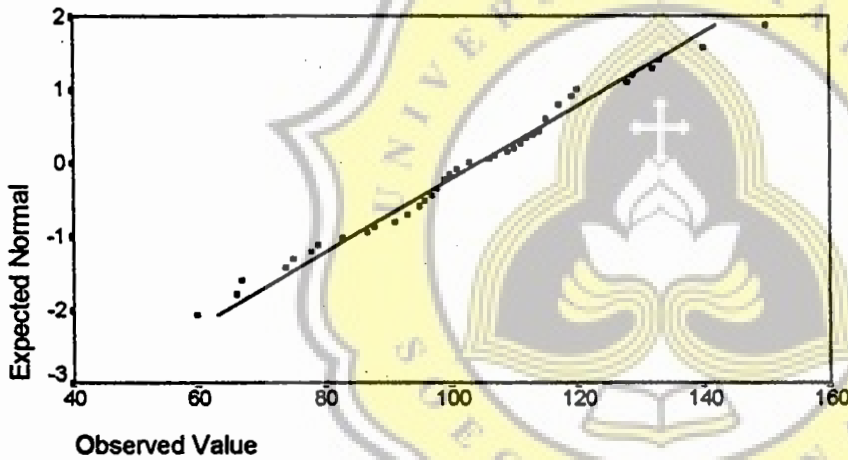
LAMPIRAN E
Uji Normalitas Sebaran

Histogram



Histeria

Normal Q-Q Plot of Histeria



--- Kolmogorov - Smirnov Goodness of Fit Test

HIS Histeria

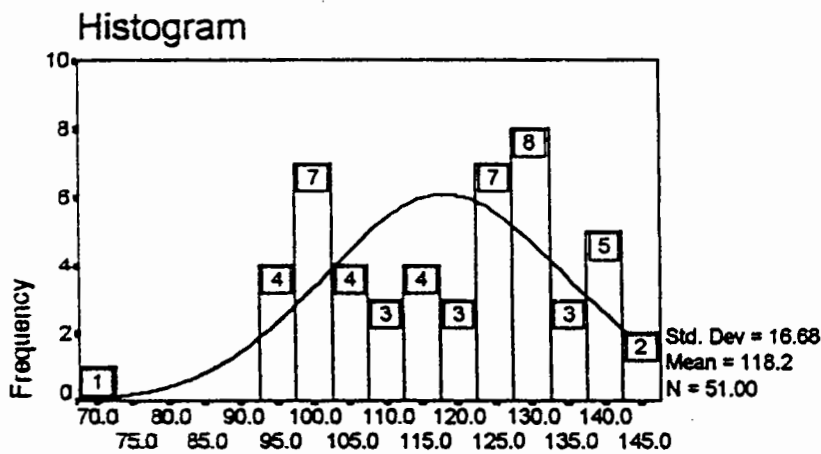
Test distribution - Normal

Mean: 104.29
Standard Deviation: 19.95

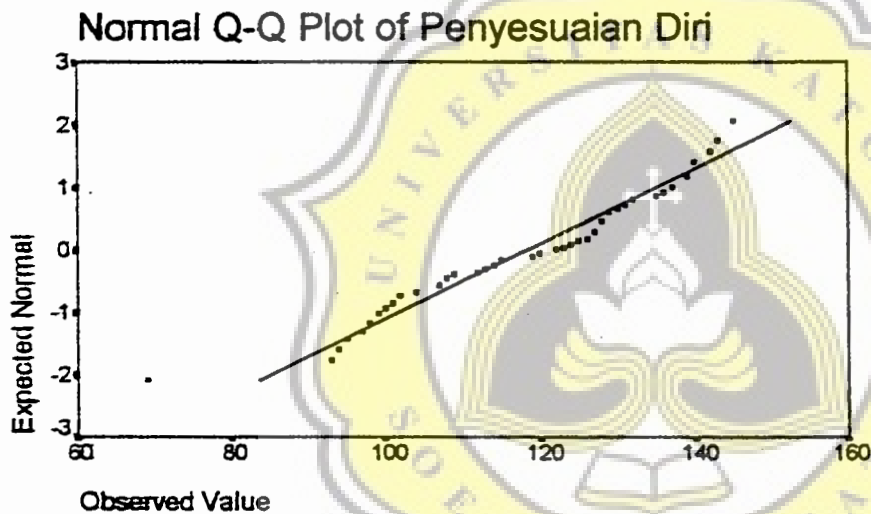
Cases: 51

Most extreme differences

Absolute	Positive	Negative	K-S Z	2-Tailed P
.08008	.08008	-.06998	.5719	.8991



Penyesuaian Diri



--- Kolmogorov - Smirnov Goodness of Fit Test

PD Penyesuaian Diri

Test distribution - Normal

Mean: 118.18
Standard Deviation: 16.68

Cases: 51

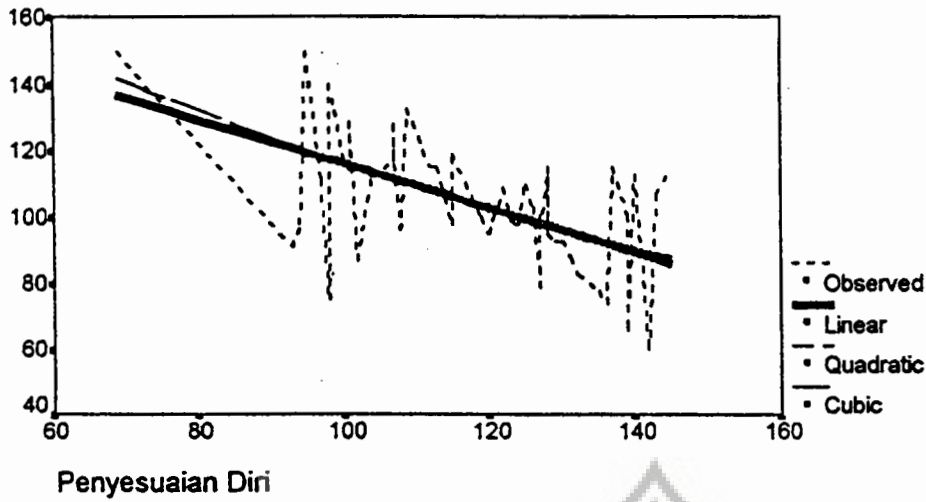
Most extreme differences			K-S Z	2-Tailed P
Absolute	Positive	Negative		
.11341	.06929	-.11341	.8099	.5281



LAMPIRAN F

Uji Linieritas

Histeria



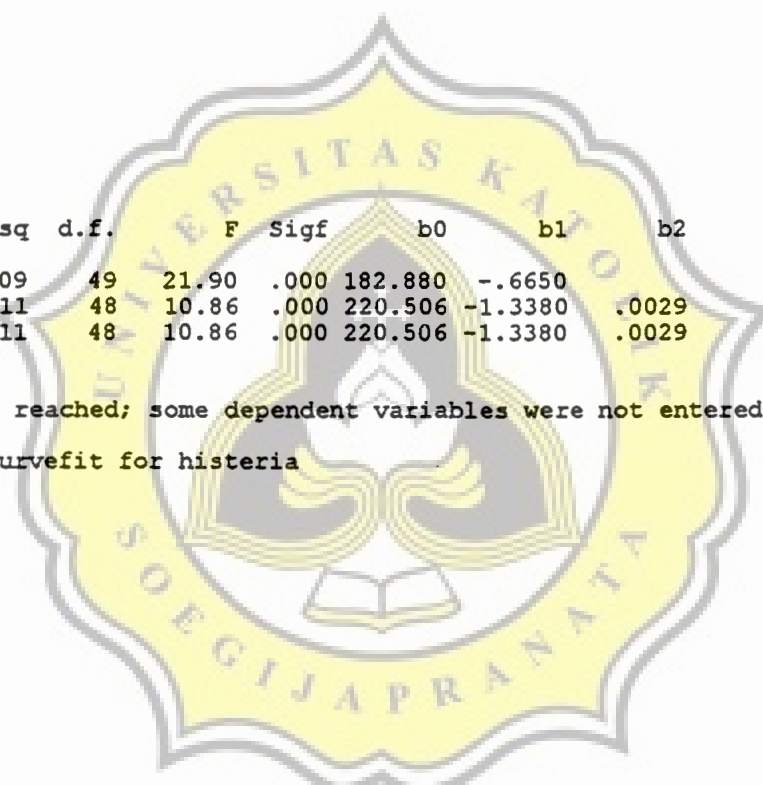
Independent: PD

Dependent	Mth	Rsq	d.f.	F	Sigf	b0	b1	b2	b3
HIS	LIN	.309	49	21.90	.000	182.880	-.6650		
HIS	QUA	.311	48	10.86	.000	220.506	-1.3380	.0029	
9 HIS	CUB	.311	48	10.86	.000	220.506	-1.3380	.0029	

Notes:

9 Tolerance limits reached; some dependent variables were not entered.

Hi-Res Chart # 9:Curvefit for histeria





LAMPIRAN G
Analisis Data
Korelasi *Product Moment*

- - Correlation Coefficients - -

	PD	HIS
PD	1.0000 (51) P= .	-.5558 (51) P= .000
HIS	-.5558 (51) P= .000	1.0000 (51) P= .

(Coefficient / (Cases) / 1-tailed Significance)

" . " is printed if a coefficient cannot be computed

Keterangan :
PD = Penyesuaian Diri
HIS = Histeria



LAMPIRAN H
Surat Ijin Penelitian



Nomor : B.2.01/791/UKS.07/III/2002

11 Maret 2002

Lamp. : -

Hal : Ijin Penelitian

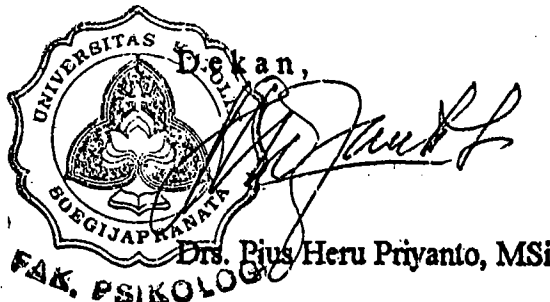
Kepada : Yth. Kepala SMP Satria Wacana
Jl. Puri Anjasmoro P.100
di-
Semarang

Kami mohon bantuan dengan hormat kepada Bapak/Ibu, untuk berkenan memberikan ijin kepada mahasiswa/i Fakultas Psikologi Unika Soegijapranata Semarang dibawah ini :

Nama : Johanes Willem Irawan
NIM / NIRM : 91.40.1116 /91.6.111.08000.50064
Tempat/ Tgl.Lahir : Pare-Pare, 20 Juni 1971
Alamat : Kp. Demes 329
Semarang

untuk mengadakan Penelitian di SMP Satria Wacana Semarang, dalam rangka penyusunan Skripsi Tingkat Sarjana dengan Judul : "*Hubungan Penyesuaian Diri dengan Histeria pada Remaja*"

Atas bantuan serta kerja sama Bapak/Ibu , kami mengucapkan terima kasih.


Ds. Pius Heru Priyanto, MSi
FAK. PSIKOLOGI

Tembusan : Yth.

- Mhs yang bersangkutan



LAMPIRAN I
Surat Bukti Penelitian



SLTP SATRYA WACANA

STATUS DISAMAKAN

PURI ANJASMORO BLOK P NO. 100 SEMARANG

TELP. (024) 7602015 FAX. (024) 7602016

SURAT KETERANGAN NO.: 106 / IO3.33/SLTP-SW/TU/2002

Yang bertanda tangan di bawah ini, Kepala SLTP Satriya Wacana Semarang, menerangkan bahwa :

Nama : Johanes Wilem Irawan
NIM / NIRM : 91.40.1116 / 91.6.111.08000.50064
Tempat / tgl. lahir : Pare-pare / 20 Juni 1971
Alamat : Kp. Demes 329 Semarang

benar-benar telah mengadakan penelitian di SLTP Satriya Wacana Semarang, dalam rangka penyusunan skripsi tingkat Sarjana dengan judul "*Hubungan Penyesuaian Diri dengan Kecenderungan Histeria pada Remaja*", pada :

Tanggal : 21 Pebruari 2002
Obyek : Siswa-siswi kelas 2 dan 3.

Demikianlah surat keterangan ini dibuat, kiranya dapat dipergunakan sebagaimana mestinya.

